

Underground spaces to visit in Helsinki

Helsinki

Foreword

Helsinki's underground spaces have been of increasing international interest. Requests for visits come almost daily to the author of this brochure alone. At the same time, safety regulations for underground facilities – especially for technical tunnels – have tightened considerably from previous years.


The City of Helsinki has limited capabilities for organising visits. However, this brochure lets visitors make independent exploration visits to underground spaces, send direct requests to the operators/owners of the underground spaces, and gain information about the underground facilities and practices related to them in advance.

The brochure contains information about:

- underground Helsinki in general
- spaces that you can explore on your own

Underground spaces open to the public

Underground spaces open to the public

- 1 Amos Rex
 - 2 Tempeliaukio Church
 - 3 Musiikkitalo – the Helsinki Music Centre
 - 4 The Olympic Stadium
 - 5 Underground walking and shopping routes
 - 6 Underground parking
 - 7 Arena Center Hakaniemi and Leikkiluola indoor playground
 - 8 Formula Center Helsinki
 - 9 The Ring Rail Line, Airport railway station & Aviapolis
 - 10 Itäkeskus swimming hall
-  Metro stations

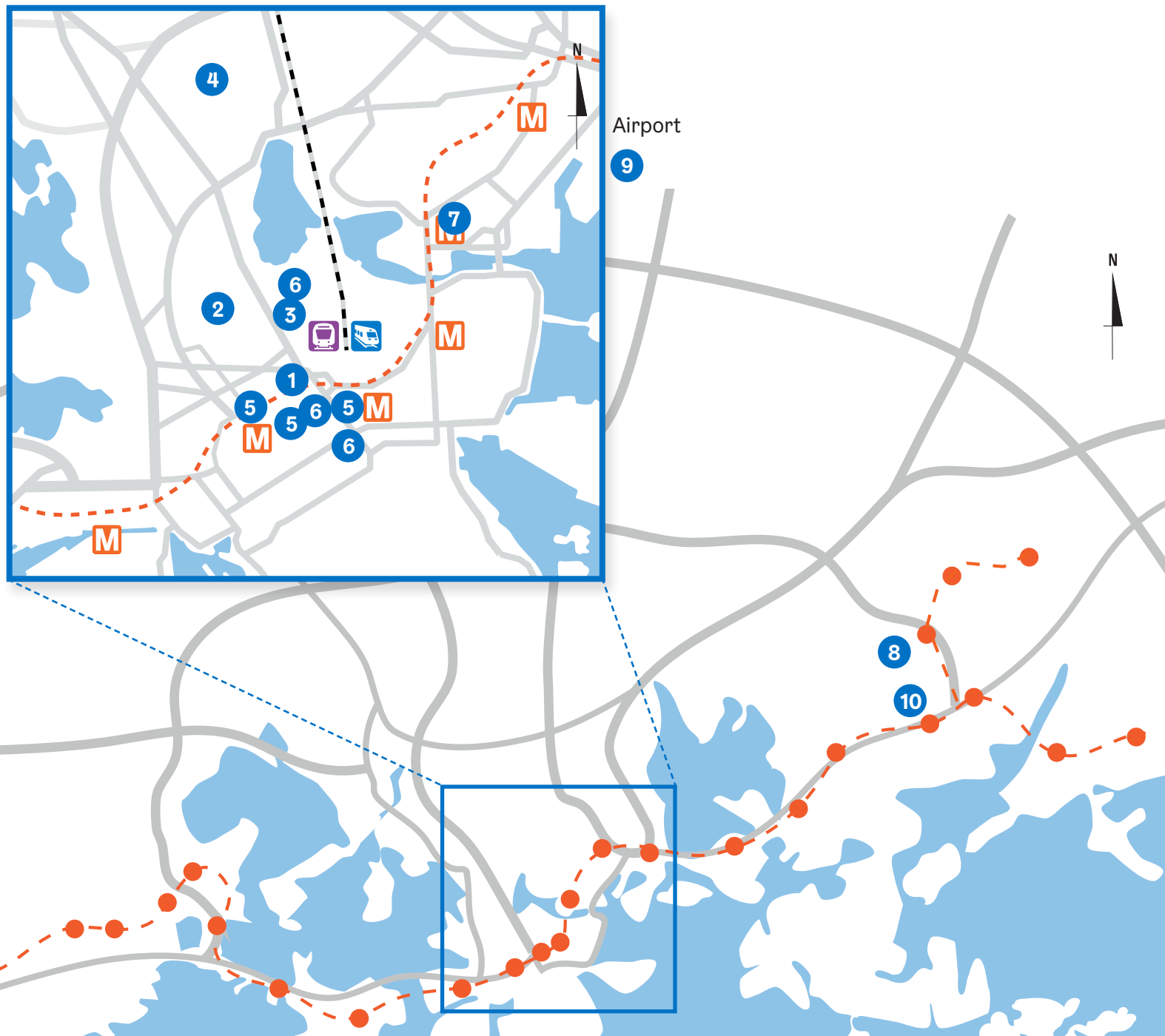




Photo: Tuomas Uusheimo

Amos Rex

Introduction:

Expanding museums below ground is not so unusual around the world. In Amos Rex's case, the unusual aspect was how it was planned. Amos Rex is quickly turning into an architectural attraction. The underground location of Amos Rex is not something that is emphasised, in fact quite the opposite. The transition of the museum from 'Glass Palace' (Lasipalatsi) Square to its underground facilities is unnoticeable, and natural light is channelled into the building. Without the underground facilities, Amos Rex could not have been built in the centre of Helsinki. Amos Rex was designed by JKMM Architects.

Things to remember:

- Please note the publishing rights for the art and exhibitions.
- You are not allowed to film or take photos of people for commercial use without permit.



Mannerheimintie 22–24, 00100 Helsinki



**Distance from the Central Railway Station:
300 m (5 min walk)**



www.amosrex.fi/en



Links to image banks:

www.bit.ly/amosrex-myhelsinki

www.bit.ly/amosrex-underground

www.amosrex.fi/en/press



Photo: City of Helsinki Image Bank

TempPELLIAUKIO Church

Introduction:

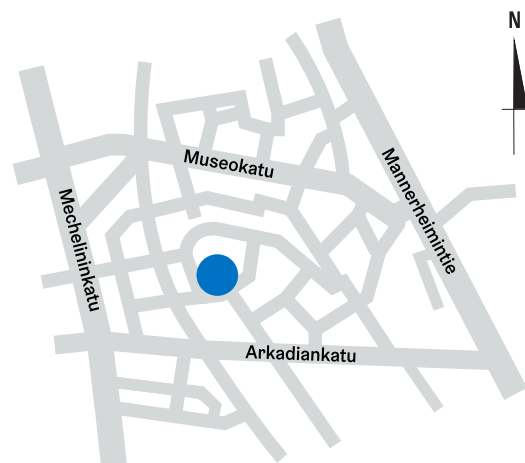
Architect brothers Timo (1928–) and Tuomo (1931–1988) Suomalainen won the open competition in 1960–1961 for the architectural design of TempPELLIAUKIO Church by unanimous decision of the jury. TempPELLIAUKIO Church (‘the Rock Church’) in the centre of Helsinki attracts visitors from all over the world.

The Rock Church was opened in 1969 and is the most popular architectural landmark in Finland, not only among modern buildings but also historic ones. However, due to superficial observations, plenty of mistaken assumptions about the history of its design and its architecture have been, and still are, presented as facts. It is time for them to be rectified:

www.temppeliaukio.fi/english/artikkeli1.htm

Things to remember:

- The church is usually very crowded during the summer.
- The busiest hours are between 10:00–14:00 from Monday to Saturday and 12:00–15:00 on Sundays.
- You are not allowed to film or take photos of people for commercial use without permit.



Lutherinkatu 3, 00100 Helsinki



**Distance from the Central Railway Station:
1.2 km (16 min walk / 10 min door-to-door
by metro)**



[www.temppeliaukionkirkko.fi/en/
temppeliaukio@evl.fi](http://www.temppeliaukionkirkko.fi/en/temppeliaukio@evl.fi)



Link to the City of Helsinki image bank:
www.bit.ly/temppeliaukio-myhelsinki
www.bit.ly/temppeliaukio-underground



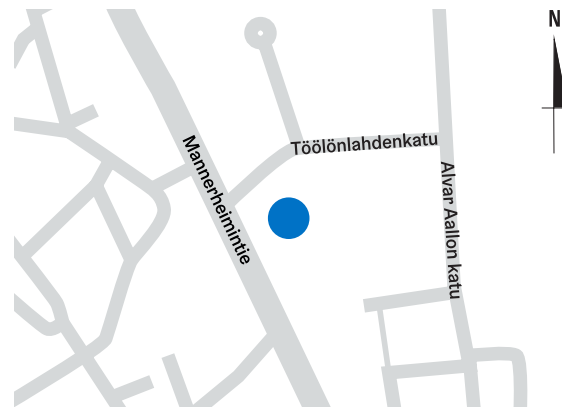
Photo: Musiikkitalo / Arno Chapelle

Musiikkitalo – the Helsinki Music Centre

Introduction:

The Helsinki Music Centre is home to the Helsinki Philharmonic Orchestra, the Finnish Radio Symphony Orchestra and Sibelius Academy of the Uniarts Helsinki. The Helsinki Music Centre was designed by LPR-Architects and it opened to the public in August 2011.

Two-thirds of the Helsinki Music Centre is built underground. When entering the centre from Mannerheimintie, the visitor arrives at the 4th floor of the building. At the heart of the building is a vineyard-style concert hall, accessed through the circular foyer on the 3rd floor. In addition to the main concert hall, the Helsinki Music Centre comprises a further five smaller halls. The concert hall stages, rehearsal rooms and loading area are found on the ground floor. The basement floors house green room facilities for both resident orchestras, with natural light provided by two lightwells. Sibelius Academy classrooms and offices are spread over seven floors that surround the semi-enclosed courtyard overlooking Karamzin Park. The first two bottom floors are home to the university's recording studios and public music library.



Things to remember:

- You are not allowed to film or take photos of people for commercial use without permit. Photography at concerts is not permitted.



Mannerheimintie 13a, 00250 Helsinki



**Distance from the Central Railway Station:
300 m (10 min walk / 8 min door-to-door
by tram)**



www.musiikkitalo.fi/en/
www.musiikkitalo.fi/en/your-visit/



Link to image bank:
www.bit.ly/the-helsinki-music-centre



Photo: Jussi Hellsten

The Olympic Stadium

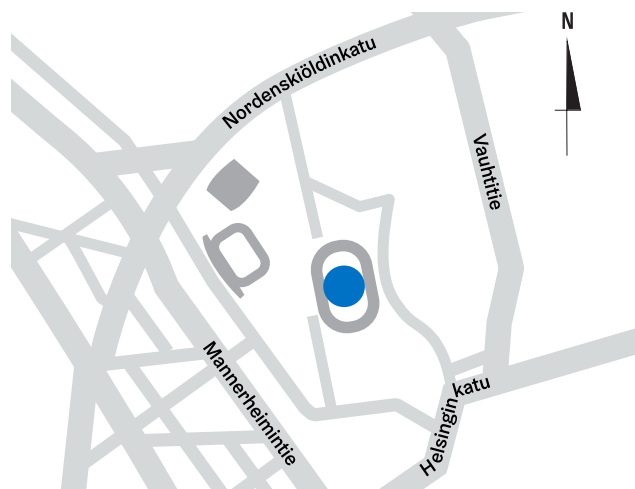
Introduction:

With its pure functionalistic lines, Helsinki's Olympic Stadium has been dubbed the "most beautiful stadium in the world". The stadium was designed by architects Yrjö Lindegren and Toivo Jäntti. Construction began in 1934 and the stadium was inaugurated in June 1938. It was the main arena for the 1952 Summer Olympic Games which were held in Helsinki. In addition to sport events, the Olympic Stadium is a popular arena for other events, such as concerts. The stadium has around 36,200 seats while the capacity for concerts can be as much as 50,000 spectators.

Between 2015 and 2020, the entire stadium underwent an extensive refurbishment and renewal, during which 20,000 m² of underground space of new facilities was built for the stadium. These facilities include multipurpose sport facilities, a logistics area and technical spaces.

Things to remember:

- You are not allowed to film or take photos of people for commercial use without permit.



Paavo Nurmen tie 1, 00250 Helsinki



**Distance from the Central Railway Station:
3.5 km (16 min door-to-door by bus)**



www.stadion.fi/en
www.stadion.fi/en/visit-the-olympic-stadium



Link to image bank:
www.bit.ly/the-olympic-stadium



Photo: Shutterstock

Metro stations

Introduction:

Metro is a rapid transit system serving Greater Helsinki. It is the world's northernmost metro system. The Helsinki Metro was opened to the general public on 2 August 1982 after 27 years of planning. It is operated by Helsinki City Transport under the Helsinki Regional Transport Authority and carries 63 million passengers per year.

The metro system consists of 2 lines, which serve a total of 25 stations. It has a total length of 35 kilometres. The metro serves as the predominant rail link between the suburbs of East Helsinki, downtown Helsinki and the western suburbs of the city of Espoo.

The line passes under the Helsinki Central Railway Station, allowing passengers to transfer to and from the Helsinki commuter rail network, including trains on the Ring Rail Line to Helsinki Airport.

Things to remember:

- You are not allowed to film or take photos of people for commercial use without permit.

 www.hel.fi/hkl/en/by-metro/

 **Link to the City of Helsinki image bank:**
www.bit.ly/metro-underground

List of Metro stations

Matinkylä, below ground
Niittykumpu, below ground
Urheilupuisto, below ground
Tapiola, below ground
Aalto University (Aalto-yliopisto), below ground
Keilaniemi, below ground
Koivusaari, below ground (subsea)
Lauttasaari, below ground
Ruoholahti, below ground
Kamppi, below ground
Central Railway Station (Rautatientori), below ground
University of Helsinki (Helsingin yliopisto), below ground
Hakaniemi, below ground
Sörnäinen, below ground
Kalasadama, above ground
Kulosaari, above ground
Herttoniemi, above ground
Siilitie, above ground
Itäkeskus, below ground
Myllypuro, above ground
Kontula, above ground
Mellunmäki, above ground
Puotila, below ground
Rastila, above ground
Vuosaari, above ground



Photo: Pertti Nisonen

Underground walking and shopping routes

Introduction:

Underground spaces that are open to the public mainly include underground car parks, metro stations and so on. The map on the next page shows some underground walking and shopping routes. One of them is a public walking and shopping route from the Kamppi Bus Station and Shopping Centre to the Stockmann department store via the Forum Shopping Centre.

Another branch of this route goes to the Central Railway Station and the Citycenter Shopping Centre via the Sokos department store.

There is also an underground walking route between Finlandia Hall and the Helsinki Music Centre, stretching to the other side of Mannerheimintie.

Things to remember:

- You are not allowed to film or take photos of people for commercial use without permit.



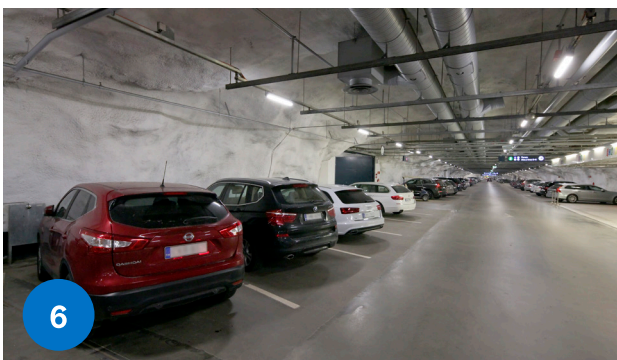
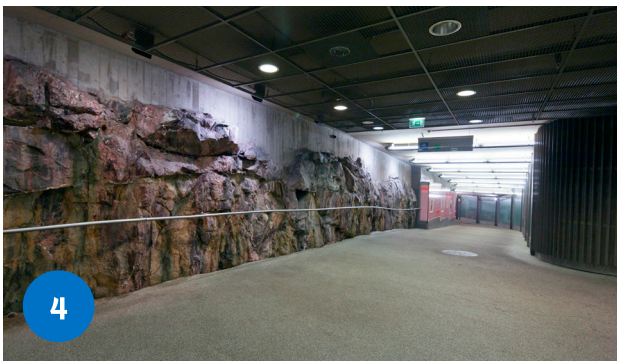
Link to the City of Helsinki image bank:
www.bit.ly/walking-routes-underground

Underground walking and shopping routes





Photo: Pertti Nisonen



Photos 1,2, 3, 4, 5, 6 Pertti Nisonen. Photo 7 Arend Oudman.



8

Photo: Pertti Nisonen



9



10



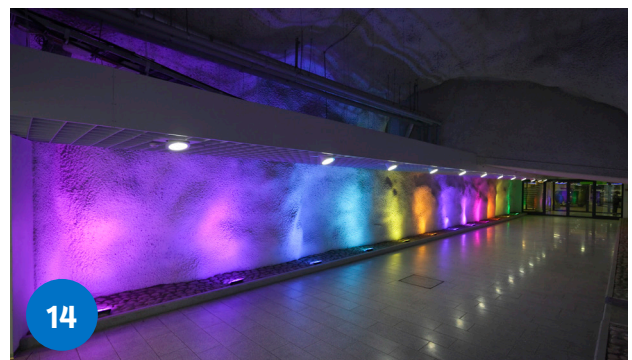
11



12



13



14

Photos 8, 10, 11, 12, 14 Pertti Nisonen. Photos 9, 13 Arend Oudman.



Photo: Pertti Nisonen

Underground parking

Introduction:

Space in the city centre is getting increasingly cramped and there are few free spots for building above ground. An increasing amount of attention is being paid to the attractiveness of underground spaces these days. This is evident, for example, in the interior and other design of parking facilities and the accessways leading to them. The planning of underground spaces located in bedrock gives architects an opportunity to utilise the living and versatile rock surface. Structural engineers need to understand and know how to dimension the underground space as a rock-framed, self-supporting structure. The outcome is not only cheaper than a concrete-framed space, but also far more beautiful.

<https://servicemap.hel.fi/unit?category=service:808>

Things to remember:

- You are not allowed to film or take photos of people for commercial use without permit.

There are several entry points to parking caverns, but most of the entries are only for paying customers:

 www.aimopark.fi
www.europark.fi
www.moovy.fi

 **Link to the City of Helsinki image bank:**
www.bit.ly/parking-underground



Photo: Leikkiluola

Sport facilities

Arena Center Hakaniemi and Leikkiluola indoor playground

Located app 30 metres below Hakaniemi market place. Four courts for floorball, futsal, handball and badminton. Leikkiluola is the most popular indoor playground and offers fun activities for kids of all ages, all-year-round no matter the weather.

 **Sörnäisten rantatie 2, 00530 Helsinki**

 **Distance from the Central Railway Station: 2 km (10 min door-to-door by metro)**

 www.arenacenter.fi/arena-center/hakaniemi/
www.en.leikkiluola.fi/

Formula Center Helsinki - Underground karting in an air raid shelter

300 metres long karting ring in eastern Helsinki.

 **Yläkivenrinne 1, 00920 Helsinki**

 **Distance from the Central Railway Station: 12 km (30 min door-to-door by metro)**

 www.formulacenter.com



Photo: Formula Center Helsinki



Photo: City of Helsinki Image Bank

The Ring Rail Line, Airport railway station & Aviapolis

Introduction:

Kehärata (the Ring Rail Line, previously Marjarata) is a railway route in the city of Vantaa in Greater Helsinki. It connects Helsinki Airport and the adjacent Aviapolis business and retail district to the Helsinki commuter rail network. The line fills the gap between the Vantaankoski and Tikkurila railway stations, running in a tunnel underneath the airport.

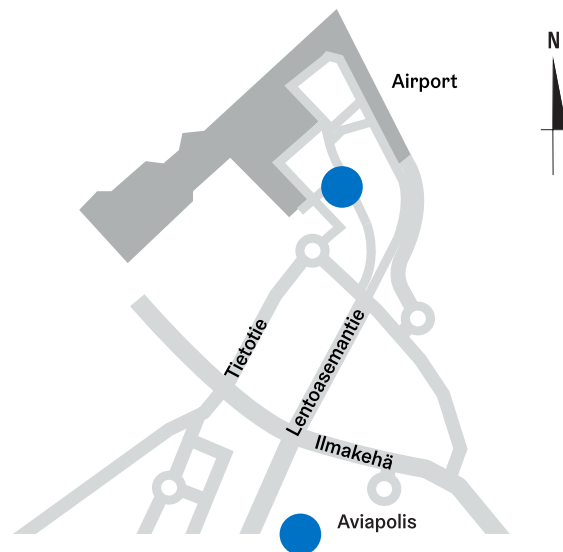
The line length is 18 km and it started operating on 1 July 2015.

Things to remember:

- You are not allowed to film or take photos of people for commercial use without permit.



Photo: Ilkka Vähäaho



Helsinki Airport, 01530 Vantaa



**Distance from the Central Railway Station:
24 km (42 min door-to-door by train)**



www.vr.fi/en



**Link to the City of Helsinki image bank:
www.bit.ly/ringrail-underground**



Photo: City of Helsinki Image Bank

Itäkeskus swimming hall

Introduction:

The Itäkeskus swimming hall and gym in East Helsinki has improved its services for minority customers: the swimming hall introduced a unisex changing room in the beginning of the autumn 2018 season.

The underground swimming pool and gym has facilities on two floors and can accommodate some 1,000 customers at a time. The hall attracts approximately 400,000 customers a year.

Things to remember:

- You are not allowed to film or take photos of people for commercial use without permit.



Olavinlinnantie 6, 00900 Helsinki



**Distance from the Central Railway Station:
11 km (22 min door-to-door by metro)**



www.hel.fi/helsinki/en/culture/sports/indoor/swimming/swimming-halls



Link to the City of Helsinki image bank:
www.bit.ly/itakeskus-underground

City of Helsinki

Urban Environment Division, Soil and Bedrock Unit

www.geotechnics.fi
geo@hel.fi

Urban Environment brochures 2023:1

Download the latest version of this brochure www.bit.ly/underground-spaces