

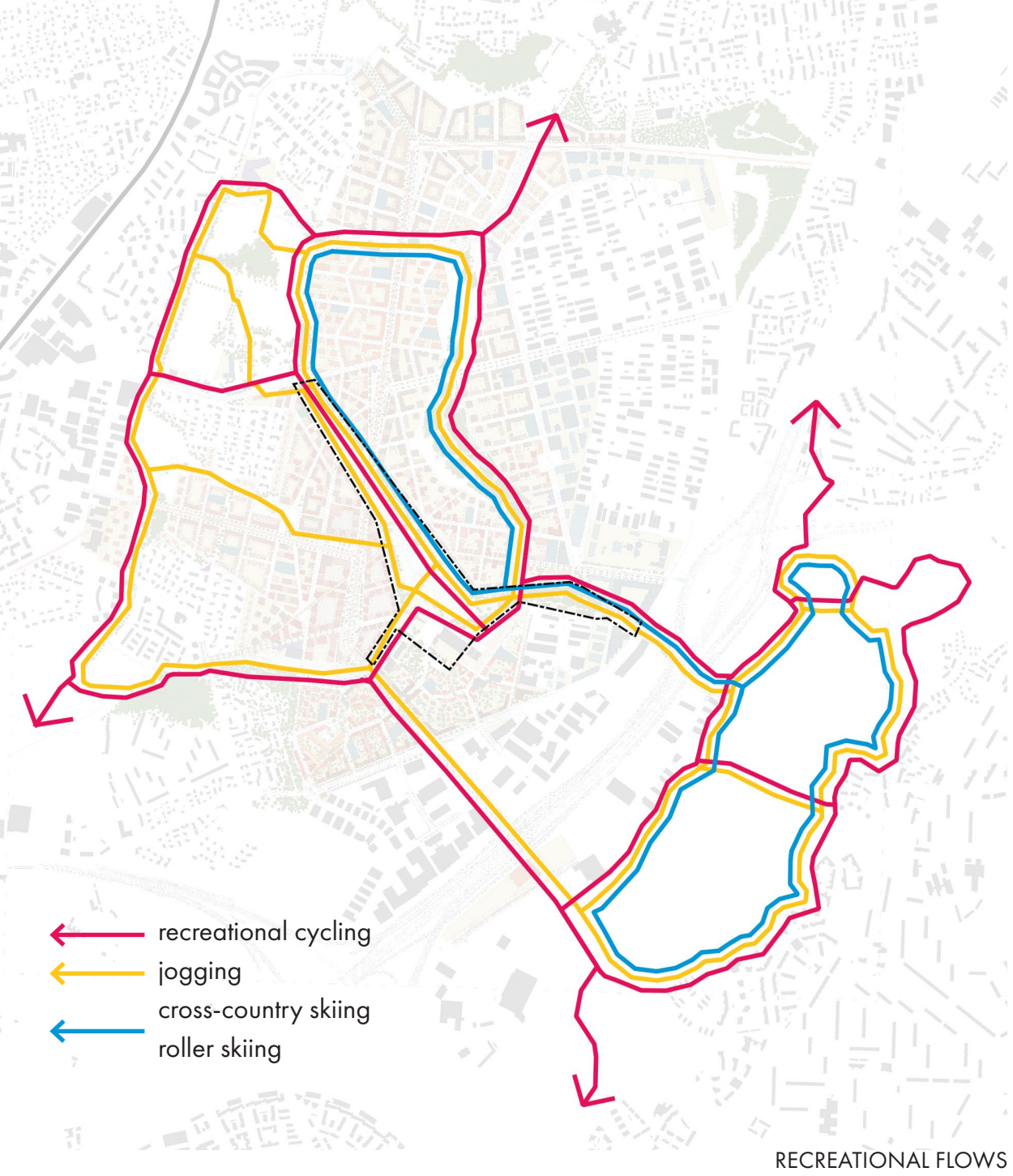
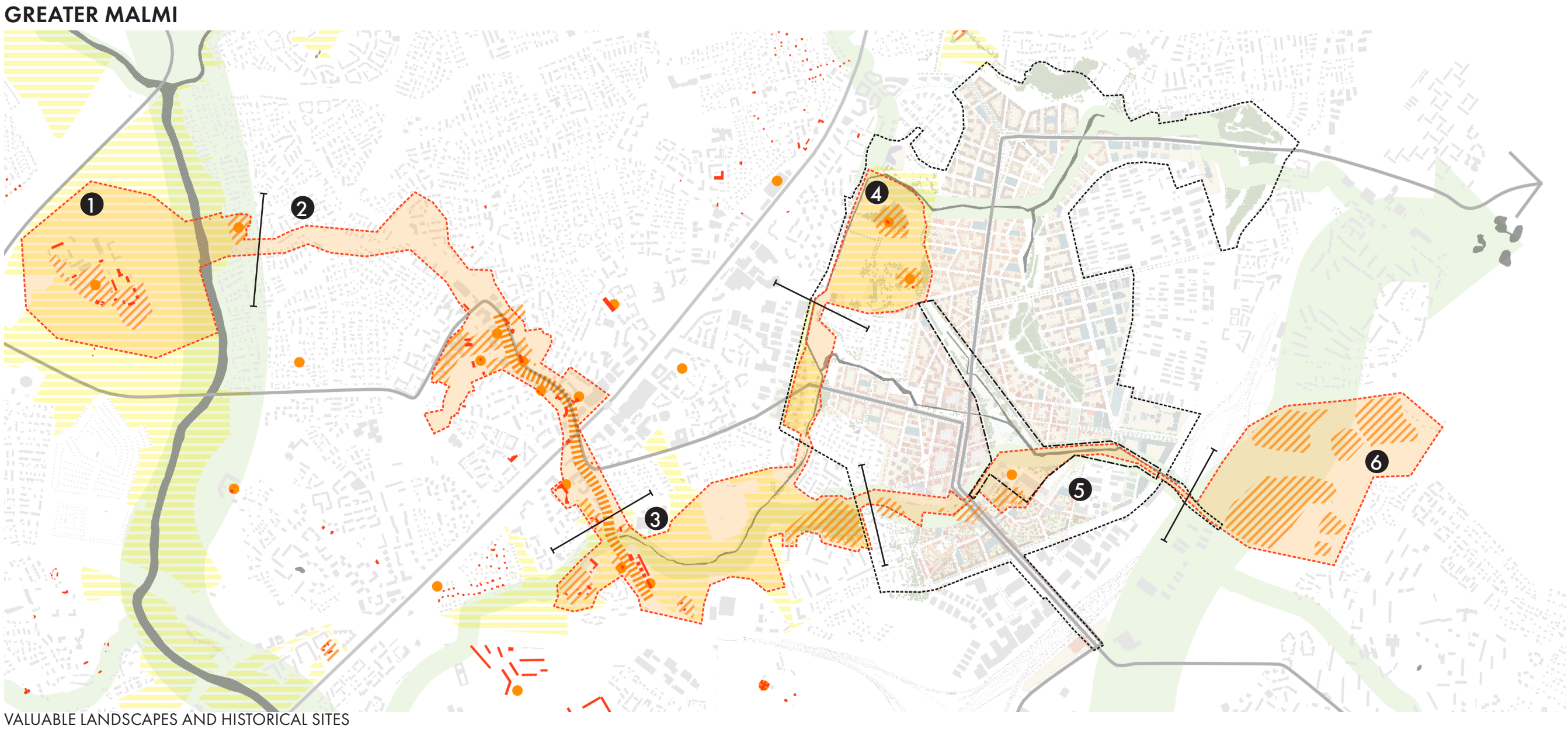
Social Condenser

Lentoasemanpuisto Ideas Competition

We want Lentoaseman puisto to become an integral part of a tightly woven network of landscapes in the area. The development of the former airport territory give us an opportunity to tie together previously disconnected heritage sites and tell a new story about the area. To accomplish this, we propose the Greater Malmi route, a scenic recreational walkway along which distinctive landscapes will unfold. A stroll along this path will tell multiple stories of the area: agricultural Falkulla estate, trenches of WWI, Kings road and, of course, history of the Finnish aviation.

The Lentoaseman puisto will be an integral part of the Greater Malmi route. However, a new urban park isn't only about the past, it is also about the future. To avoid hollow nostalgia, we are turning the airport past into a design generator for the new unique urban park, which will serve not only the community of Lentoaseman kenttä, but also the diverse and multicultural communities of Malmi, Tapaninkylä and Mellunkylä neighborhoods.

While embracing the unique existing identity of the park and its surroundings , we will at the same time leave room for future residents to add their very own. Areas for future residents' interventions provide flexibility for an uncertain future. Through spaces where local communities can intervene, a direct ownership of the area will occur. Dedicated spaces for residents' interventions will adapt to the changing demands of the users and can be used for all types of unplanned activities. Development of the area by the community will create shared experiences. The aim is to bring strangers together, enable intercultural socializing within Lentoaseman kenttä, but also favor social cohesion between diverse Malmi, Tapaninkylä and Mellunkylä. Lentoaseman puisto should become a social condenser for all north-east Helsinki, an inclusive public space which prevents exclusion and favors social mixing. Part of the budget dedicated for art (prosenttiperiaate) could be used to facilitate and support these activities, and authorities could help to create a community-driven NGO to manage these spaces. In the Lentoaseman puisto community is a placemaker.



The scenic route starts at the Vantaanjoki river valley, where the river divides the landscape into an open field and meadow landscape to the West and a more urban landscape to the East. The scenic meadows and agricultural fields with their surrounding forests provide habitats for bats, birds as well as the Siberian flying squirrel. The Vantaanjoki river itself provides a home for otters and thick shelled river mussels. Tapaninvainion beach is a popular recreational destination during summertime.

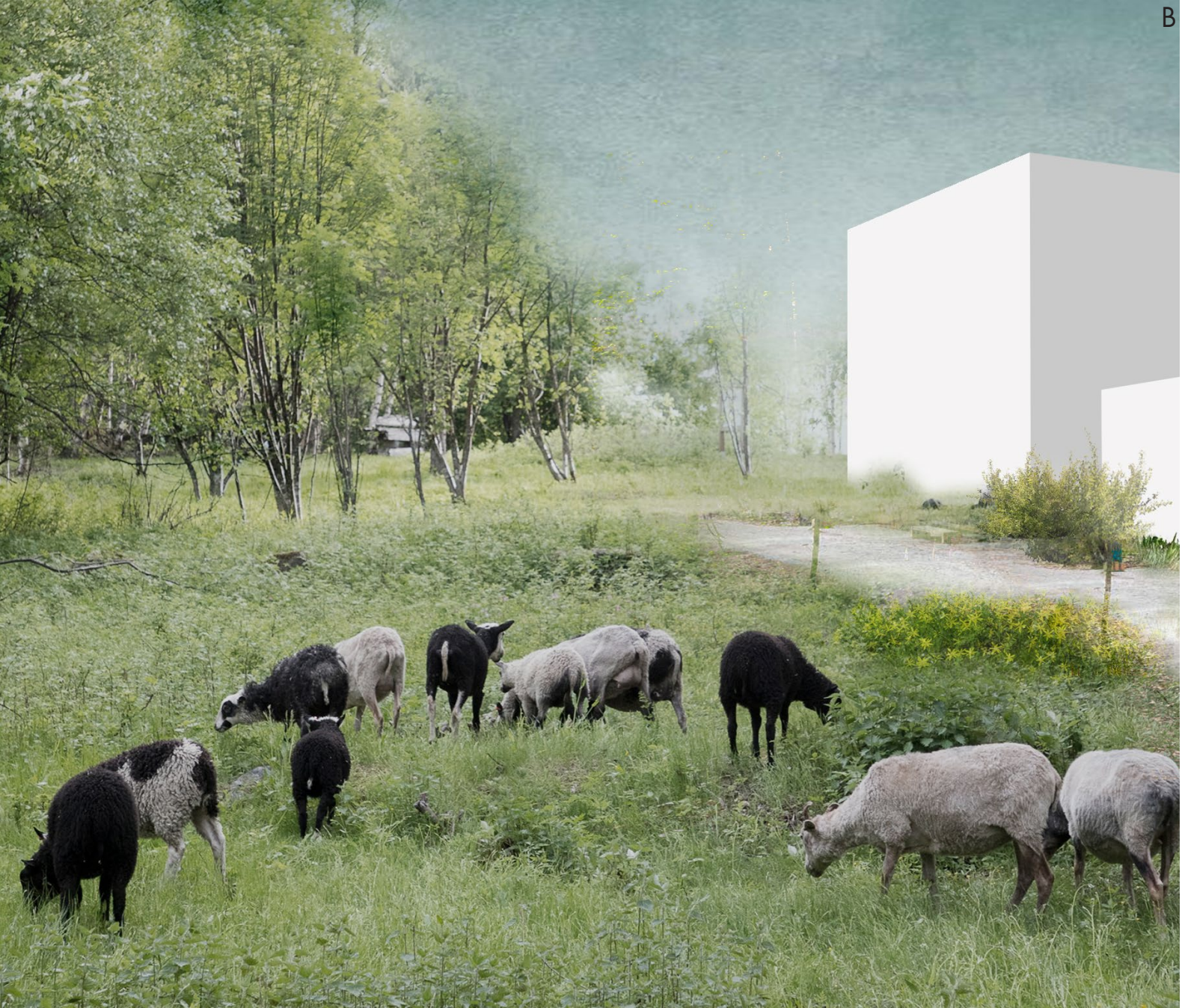
Kirkkonkyläntie street played a key role in the development of the whole Malmi area. Along this street, there are several historical buildings with significance for the whole region. However, rapid urbanization in the 80th forms the impression of the urban fabric. There are ambitious plans for the development of the area next to the train station in the coming years. Thus, the urban landscape in Malmi will remain dynamic and changeable.

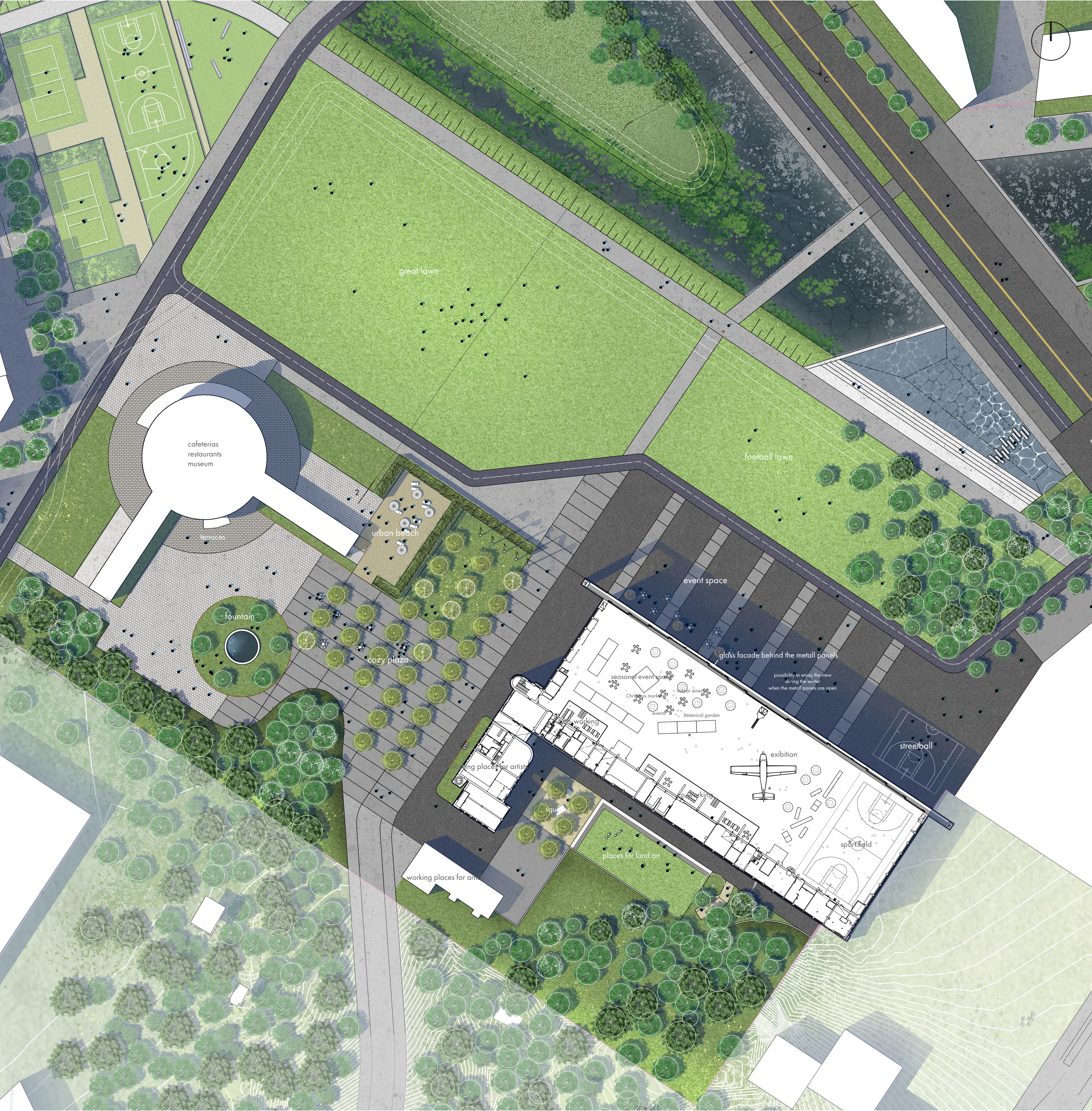
The Longinoja brook valley flows through Ala-Malmi, consisting mostly of humid deciduous grove and providing an important habitat to a number of different birds. The area has a natural character and together with the flowing water it provides a relaxing route for walking. The Longinoja itself is an important habitat for brown trout as well as other fish species.

The scenic route then takes the visitor through the more rural parts of Malmi. The open fields surrounding Falkulla farm are small reminders of the past, when fields and grazing animals used to be the main elements of the Malmi landscape. Today the area provides the possibility to enjoy a rural scenery in the middle of urbanity.

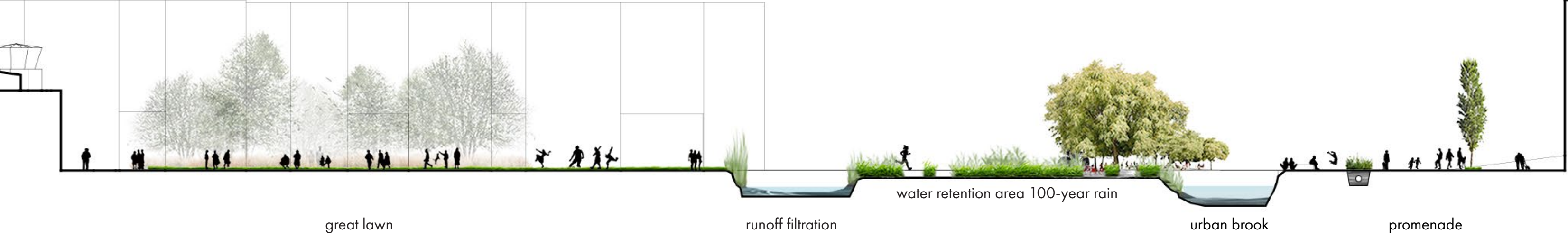
The Malmi airport park opens up with a meadowy grove, urban gardens and an open flowering meadow landscape. In the middle of the park, a wetland helps clean and manage the urban runoff, and brings the soothing element of open water to the park. The numbers of the former runways are kept visible throughout the park, honoring the airport identity of the area. The park closes into a mixed forest.

The scenic route ends in the rocky urban forest of Kivikko. The history is present even here through the WWI trenches still remaining. The somewhat thick mixed forest creates a contrast to the open fields of Malmi airport and Falkulla, and offers a peaceful place to sit down and listen to birdsong. In addition to being an important habitat to birds, the forest also hosts a number of different polypores. The area is popular among Mellunkylä and Malmi residents for sports, especially for cross-country ski during wintertime.



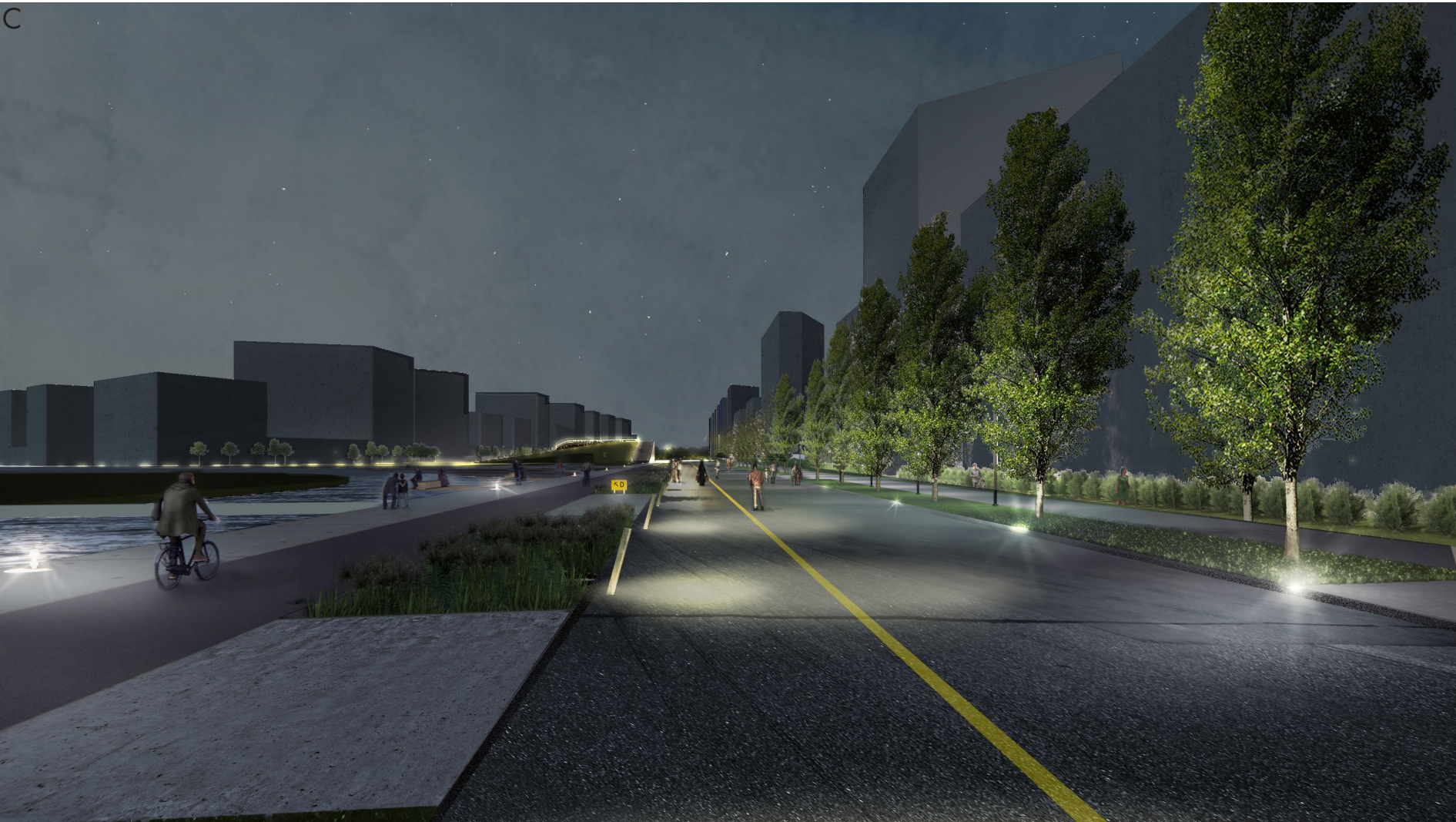


SITE PLAN OF THE TERMINAL AREA 1:500



The spring located to the east from the Lentoaseman puisto feeds the Longinoja stream. Thus, the urban brook passing through the park will become a part of a valuable fragile ecosystem inhabited by brown trout. To avoid any harm from polluted urban runoff we plan to manage it with nature-based solutions. Before entering the Longinoja runoff will go through bioswales. Then urban runoff full of nutrients will be collected in separate wet ditches. Rich in nutrients water will create a new biotope in wet ditches and help increase the biodiversity of the whole area. Also, the area called in our proposal green island "the kite" is a bit lower than the surrounding area and will serve as a water storage basin in case of extremely heavy rain. All these multiple objects will work as one system.

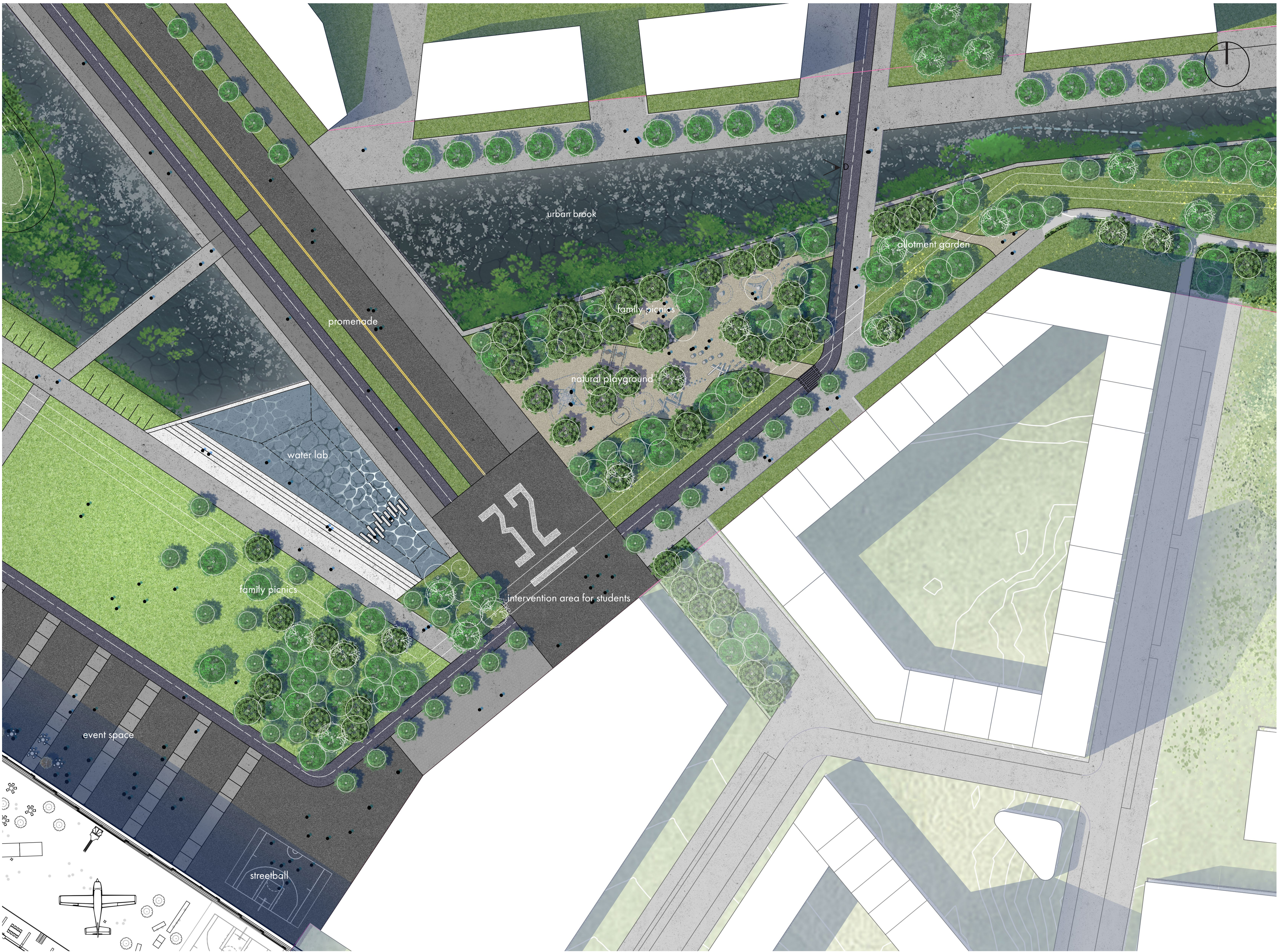
SECTION 2-2 1:500



- can be realized in phase 0 or between phase 1 and 2
- 1phase
- 2phase
- 3phase
- 4phase
- 5phase

PHASING PLAN

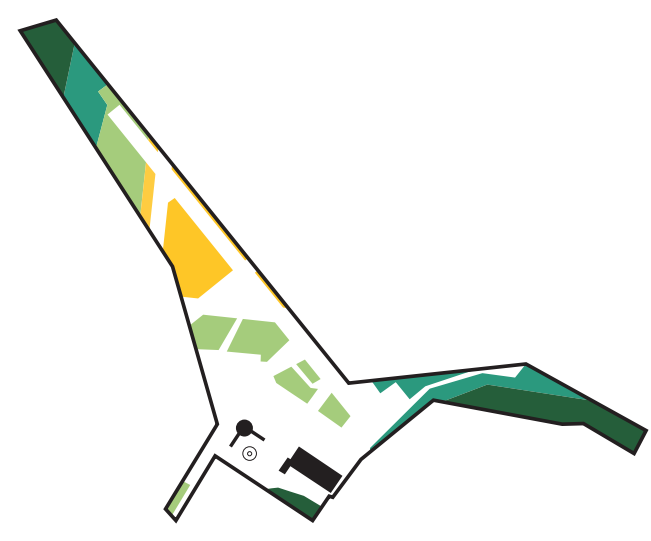
SOCIAL CONDENSER ☐ ☐ ☐ ☐ ☐



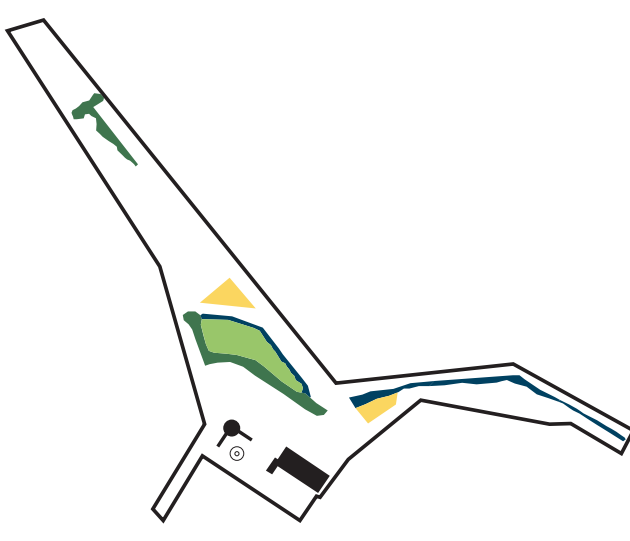
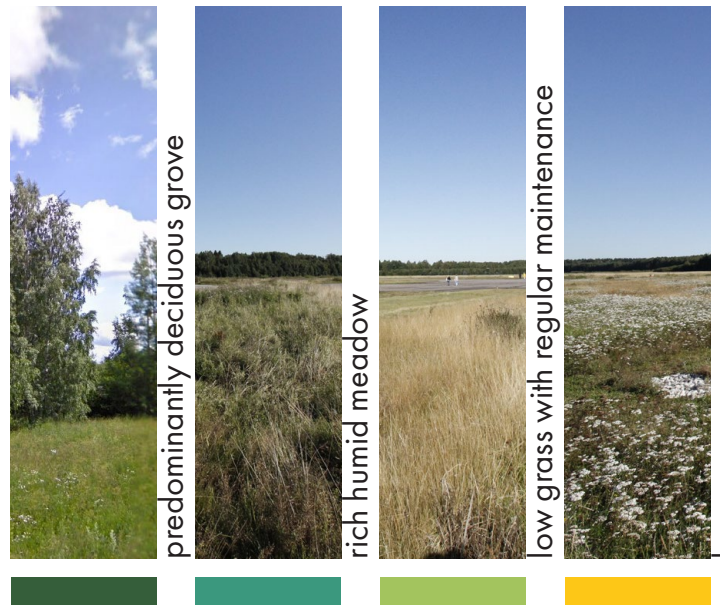
SITE PLAN OF THE PLAYGROUND AREA 1:500



BIOTOPES



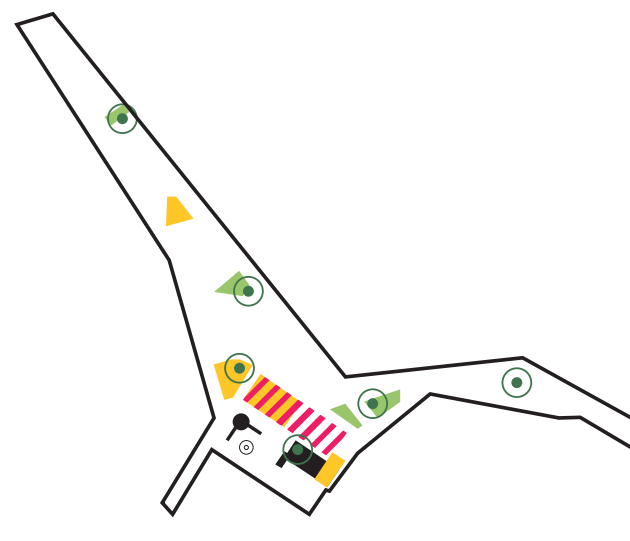
Existing Wildlife Habitats



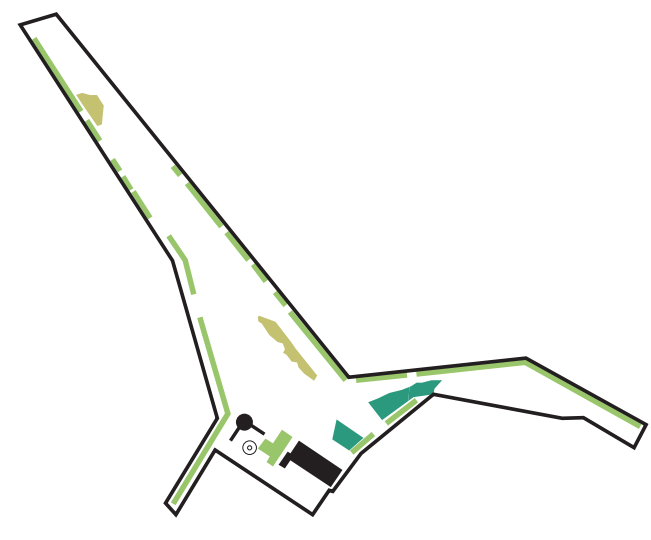
Open habitats Rugged terrain



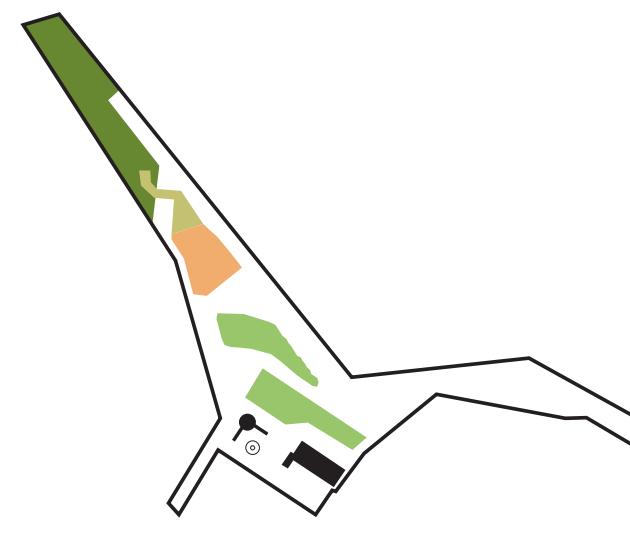
SOCIOTOPES



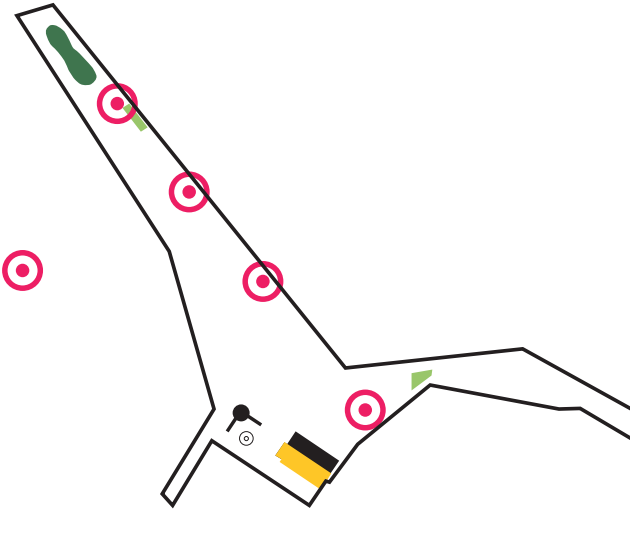
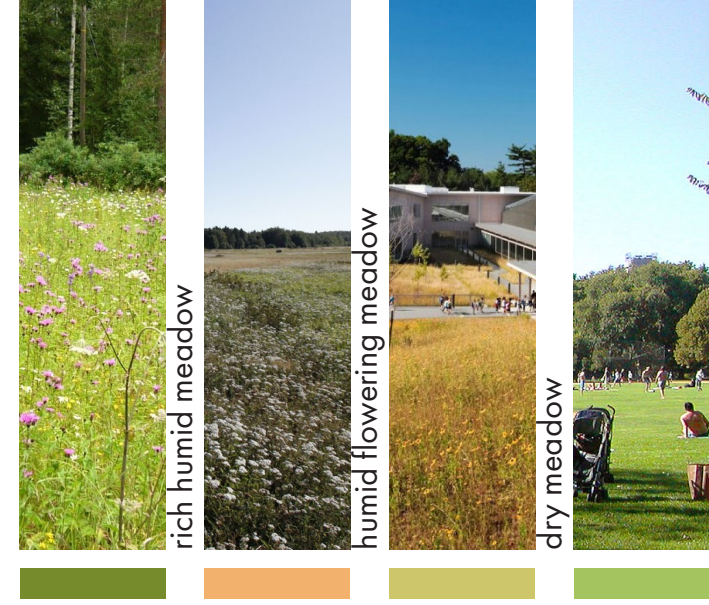
Team building



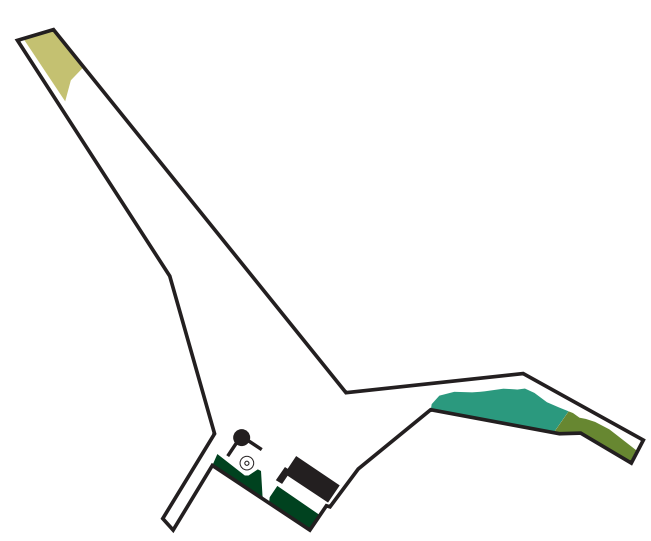
Tree-associated Landscaped



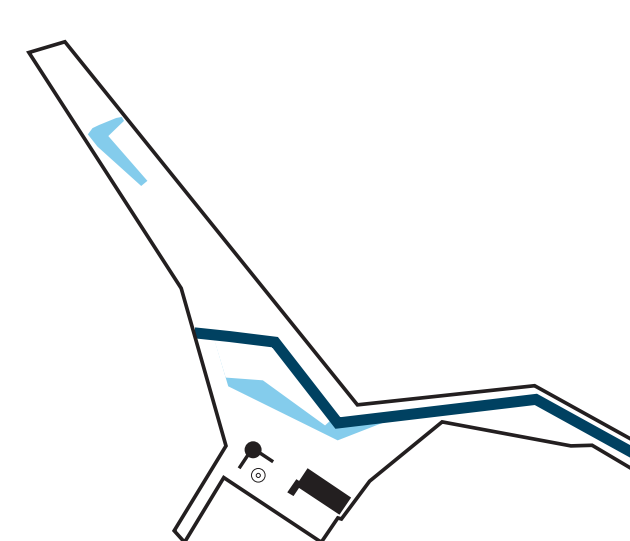
Open habitats Flats



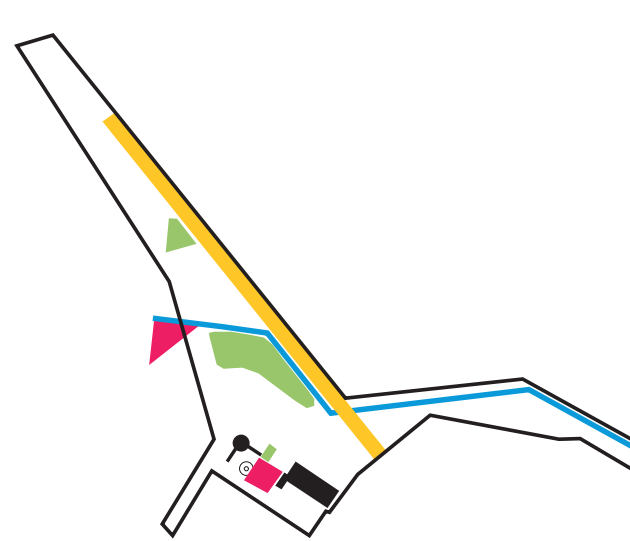
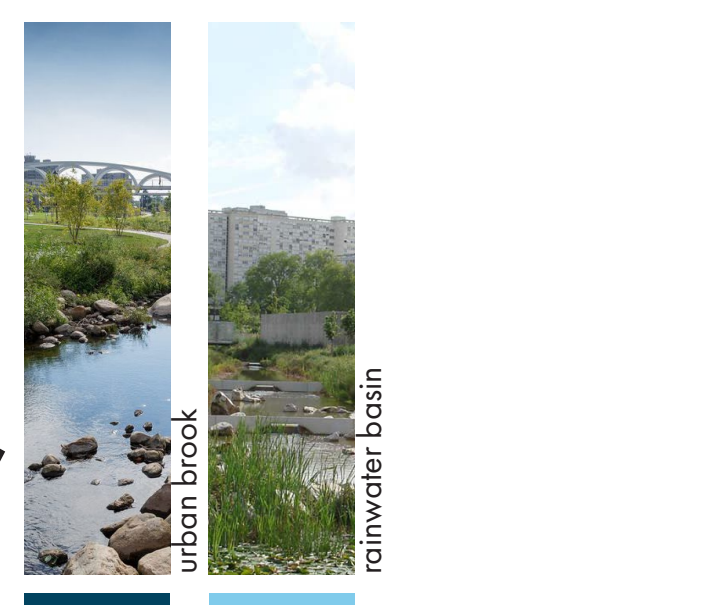
Co-creation



Tree-associated Natural



Wetlands



Calmness



In our proposal for Lentoaseman puisto, we will not only preserve biodiversity, our aim is to increase it. By adding new biotopes alongside already existing ones, we will create multiple habitats for a diverse group of species to inhabit. By embracing the already existing structures of humid meadow, the Longinoja brook and the deciduous groves, and adding new layers of urban gardens, wetland, dry meadow and ruderate, we will create complexity that generates biodiversity.