

Welcome to pre- primary education for 6-year-olds!

Getting a place in pre-primary education
for a 6-year-old: information for guardians





Welcome to pre-primary education brochure
Tervetuloa esiopetukseen -esite
Välkommen till förskoleundervisningen -broschyr
Добро пожаловать на дошкольное обучение
Ku soo dhowow waxbarasho-horaadka
أهلاً وسهلاً في التعليم التمهيديمعلومات لأولياء الأمور عن

Contents

- 3 Welcome to pre-primary education!
- 4 What and how do children learn in pre-primary education?
- 5 How are pre-primary education places assigned?
- 6 If your child is in municipal early childhood education
- 9 If your child is not in municipal early childhood education
- 11 If you want to change the assigned place:
how to apply for a new pre-primary education place
- 12 Early childhood education that supplements pre-primary education
- 13 Pre-primary education in a private daycare centre
- 14 Child support and pupil welfare in pre-primary education
- 15 For the new pre-primary education pupil



Welcome to pre-primary education!

Your child will start pre-primary education next autumn. Pre-primary education is about learning through play and exploration, practising social skills and reinforcing your child's self-esteem through positive learning experiences.

The pre-primary school year is significant in your child's learning path. Their learning path starts in early childhood education, continues to pre-primary education, and from there to basic education. In fact, your child's pre-primary education place is often close to their future school, and we collaborate with the school during the pre-primary school year. Your child will get to know their future classmates, as the children who attend pre-primary education together will also go on to attend the same school.

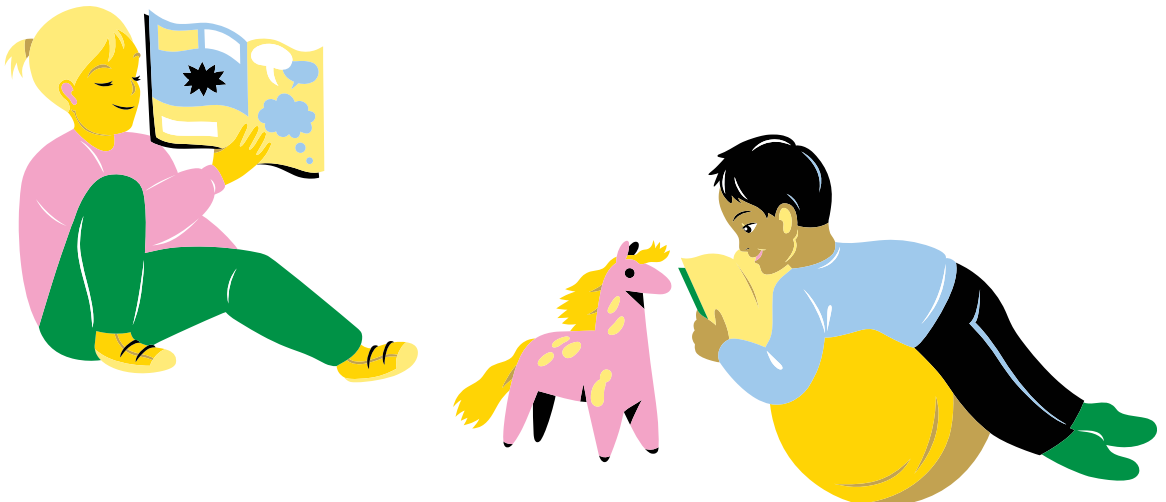
Helsinki also has a wide network of private daycare centres that provide pre-primary education.

Pre-primary education is compulsory by law. This means your child must participate in pre-primary education on school days and be present during pre-primary school hours. Your child will become more involved in group activities, develop friendships and practice new skills when they attend pre-primary education regularly.

We carry out pre-primary education in close cooperation with parents and guardians. One form of cooperation is your child's pre-primary education discussions ('LEOPS' in Finnish) in the autumn and spring. During the year, guardians can participate in many ways and have a say in their child's school year.

I would like to wish all the children starting pre-primary education and their guardians an exciting and joyful school year 2025–2026!

Miia Kemppi, Head of Early Childhood Education, Education Division, City of Helsinki



What and how do children learn in pre-primary education?

Together with the guardian, we will plan the appropriate activities for the child, that support their learning and well-being.

We encourage the child to trust in their own abilities by reinforcing their learning and thinking skills.

We practise the social and emotional skills and being part of a group together.

We learn by playing, exercising, exploring and getting to know our surroundings – just as in early childhood education!

Activities are planned and assessed with the children.

The individual needs and interests of each child and the Helsinki curriculum for pre-primary education are in the core of the pre-primary education group's activities.

Video: 'Adventure awaits at pre-primary education'



Learning new things together is something to enjoy and to be excited about!

How are pre-primary education places assigned?



Helsinki is divided into admission areas for pre-primary education. The child's home address determines which pre-primary education admission area they belong to. One admission area may have one or more daycare centres that provide pre-primary education, or a daycare centre may provide pre-primary education in a school. The area also includes one or more comprehensive schools. Every daycare centre that provides pre-primary education has a designated school that it cooperates with. As a rule, children are assigned a pre-primary education place in the daycare centre whose cooperation school is the children's future local school. The pre-primary education place is not always in the same daycare centre in which the child has been in early childhood education.

Your child is assigned a pre-primary education place automatically if they are in a municipal daycare centre (or in other form of early childhood education) before the start of pre-primary education. In this case, you do not need to do anything before guardians are informed of pre-primary education places in February.

If your child is in home care, participates in club activities or is on a temporary break from early childhood education before the start of pre-primary education, enrol them in pre-primary education. When you enrol your child in pre-primary education, they will be assigned a place at the same time as other children. The enrolment also applies to children who are in early childhood education in a round-the-clock daycare centre that provides extended hours and need extended hours during the pre-primary school year.

To apply for pre-primary education in a private daycare centre, contact the manager of the private daycare centre and submit the pre-pri-

mary education application directly to the private daycare centre you wish to get a place in.

Children may also be assigned a pre-primary education place in a pre-primary education admission area that is not the one associated with their home address. This might be the case in the child is in the Swedish-language immersion programme, has special educational needs or the need for extended hours. A child's pre-primary education can also be arranged in a group or facility that does not provide pre-primary education to others if the child's support needs make it appropriate for them to stay in their current daycare centre.

If you are not satisfied with the pre-primary education place assigned to your child, you can apply for another pre-primary education place for them. If you do this, you lose the place you rejected. The pre-primary education places in a daycare centre are always given first to those children whose future local school is the designated cooperation school of the daycare centre. If there are more applicants than available pre-primary education places, a draw will be used to assign the places if necessary.

Secondary admission means that you apply for a pre-primary education place for your child in an admission area other than the one associated with your child's home address. Your child may be given a pre-primary education place if there are vacant places in the pre-primary education group in the daycare centre. As a guardian, you are responsible for your child's transport if they apply for a pre-primary education place outside their pre-primary education admission area. The exception is children who receive special needs support in pre-primary education in a facility other than the pre-primary education facility in their admission area.

If your child is in municipal early childhood education

Your child will automatically receive a place in municipal pre-primary education if they are in a municipal daycare centre (or in other type of early childhood education). You will be notified of the place in the Asti online service. Pre-primary education places will be assigned on **23 January 2025** based on the child's home address in your pre-primary education admission area.

Important dates

**13 February
2025**

Your child's pre-primary education place for 2025-2026 will be published on the Asti only service.

Pre-primary education places are assigned to all children in the city's municipal daycare centres (or in other forms of early childhood education). As a guardian, you do not need to do anything before this.

**13–26 February
2025**

Accept or reject the pre-primary education place on Asti.

If you reject the place, you must submit a new application during 13–26 February 2025 on Asti.

**By the end of
March 2025**

You will get a decision on your child's pre-primary education place. Note that unless your daycare centre or facility changes, you will not get a new decision regarding the early childhood education that supplements pre-primary education.

May 2025

The daycare centre of school providing the pre-primary education will be in touch with you regarding the start, introductions and daily life in pre-primary education.

7 August 2025

Your child's pre-primary education starts.

If your child is in early childhood education in Swedish-language immersion

Children who are in the Swedish-language immersion programme are assigned a pre-primary education place according to their language immersion path. For more information, please contact your child's current daycare centre. As a guardian, you must accept the pre-primary education place in Swedish-language immersion on Asti between 13 and 26 February 2025.

If your child needs extended hours in pre-primary education

If your child needs care with extended hours during the pre-primary school year, enrol them in pre-primary education in Asti between 8 and 21 January 2025. When you do this, your child will be assigned a pre-primary education place in a round-the-clock daycare centre between 13 and 26 February 2025 on the Asti online service. If you do not inform us of your child's need for extended hours in pre-primary education, your child will be assigned a place in a regular daycare centre within your admission area and not in a round-the-clock daycare centre. You must verify the need for extended hours in pre-primary education with a shift work certificate provided by your employer by 21 January 2025.

Pre-primary education with extended hours is provided based on children's attendance times on weekdays between 8.00 and 16.00. The daycare centre that provides pre-primary education with extended hours will give you more information about the pre-primary education times.



If your child is on a temporary break from early childhood education

If your child is on a temporary break from early childhood education, learn more on page 10.

If your child or family has a non-disclosure for personal safety reasons

A non-disclosure for personal safety reasons is an exceptional measure that restricts the disclosure of your address data from the Population Information System. Your child cannot be automatically assigned a pre-primary education place in Asti because the non-disclosure protects the child's home address information. If you have a non-disclosure in place, send the enrolment form during **8–21 January 2025** via Secure mail to the Service Guidance for Early Childhood Education team, and your child will be assigned a pre-primary education place by secure email on **13 February 2025**. You must accept or reject the assigned place by replying to the email. Find the detailed instructions, an enrolment form and a link for sending the secure email at hel.fi/pre-primary-education.



If your child's home address changes to another admission area within Helsinki before the start of pre-primary education

If your child's home address changes before the start of pre-primary education, you can reject the place assigned to your child and apply for a new place as soon as the new address is known. The best time to apply is during the application period **13–26 February 2025**, when your child will be allocated a pre-primary education place in their admission area. Submit your application on the Asti online service.

If you apply after **26 February 2025**, your child can get a place in the pre-primary education option you applied for only if there are places available. If there are no places available in the place you applied for, your child will be placed in another pre-primary education option in the admission area. If there are no places available in your admission area, your child will

be offered the nearest available place in another admission area. The pre-primary education place is indicated in the pre-primary education decision. We will make decisions on applications received after **26.2.2025** from the beginning of April onwards.

If you want to switch to pre-primary education in Finnish or Swedish

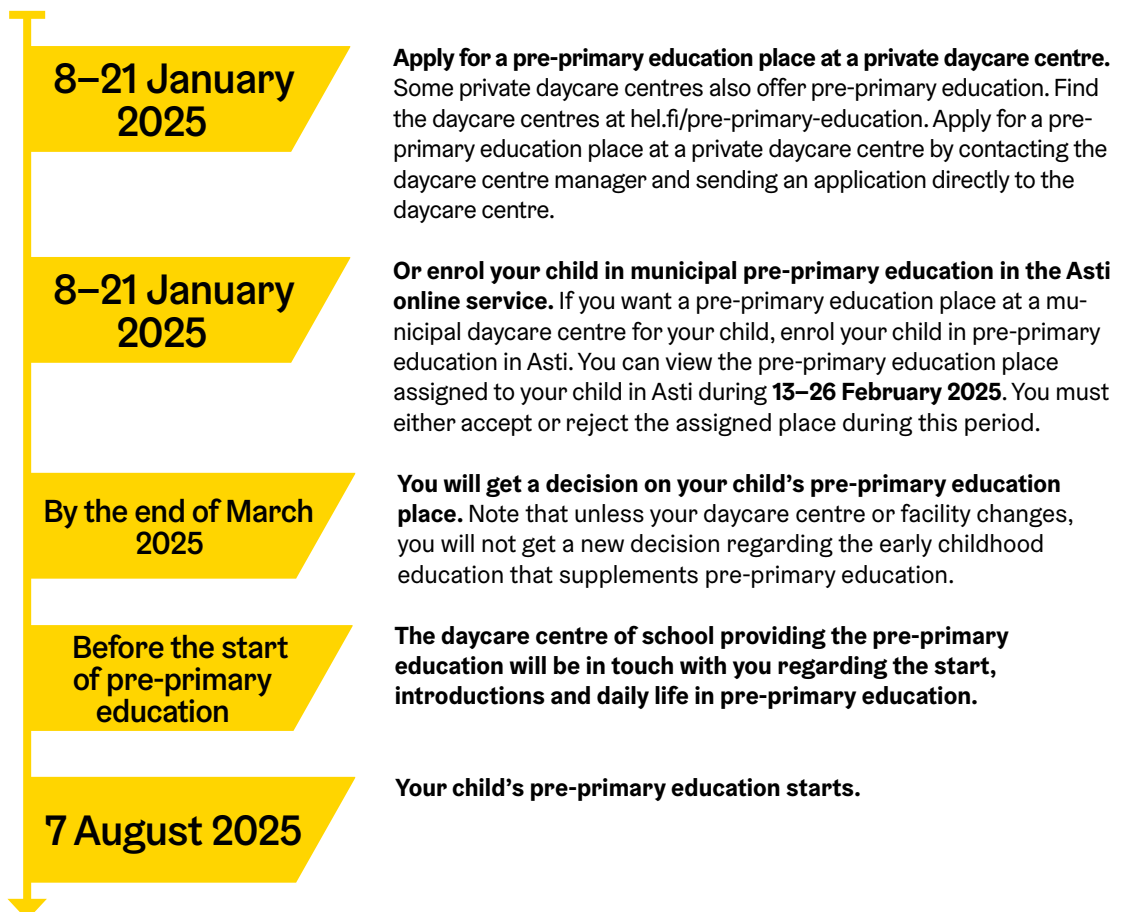
Pre-primary education places are assigned in Asti according to the language in which early childhood education is provided or the language you indicated at the time of enrolment. If you want to switch from Finnish-language early childhood education to Swedish-language pre-primary education or vice versa, reject the pre-primary education place assigned to your child and apply for a new place in Asti during **13–26 February 2025**. Please note that you should only apply for a place in pre-primary education in either Finnish or Swedish. The idea is that your child's learning path will continue in basic education in the language used in pre-primary education.



If your child is not in municipal early childhood education

If your child attends the City of Helsinki's club activities or is in home care, on a temporary break from early childhood education or in early childhood education in a private daycare centre, and you want a pre-primary education place in a municipal daycare centre, you must enrol your child in pre-primary education. By enrolling your child in pre-primary education, you ensure that your child is assigned a pre-primary education place at the same time as other children beginning pre-primary education. When you enrol your child, all you must do after enrolment is to accept a pre-primary education place during **13–26 February 2025**.

Important dates



If your child attends club activities provided by the City of Helsinki

Children who attend the city's club activities are not automatically assigned a pre-primary education place. If you want your child to have a pre-primary education place in a municipal daycare centre, enrol your child for pre-primary education in Asti.

If your child is on a temporary break from early childhood education

If your child is on a temporary break from early childhood education during **21 January–26 February 2025**, enrol them in pre-primary education in Asti. When you enrol your child in pre-primary education, they will be assigned a place at the same time as other children. If you do not enrol your child in pre-primary education, apply for a place in Asti during **13–26 February 2025**. When you do this, your child will be assigned a place at the nearest available daycare centre providing pre-primary education.

If your child's home address is in Helsinki, but they attend early childhood education in another municipality

Every child in Helsinki has the right to a pre-primary education place in their own admission area. If your child's home address is in Helsinki, but they currently attend early childhood education in another municipality, please enrol them for pre-primary education in Asti.

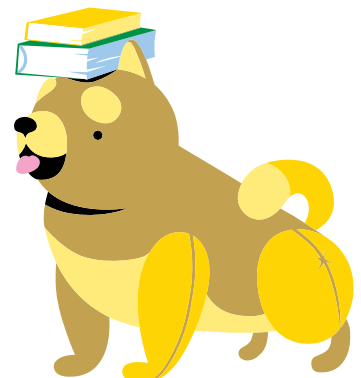
If your child's current home address is in another municipality or abroad

If your child does not have an official home address in Helsinki by **23 January 2025**, but they will start pre-primary education in Helsinki in August, see hel.fi/pre-primary-education for more information.

If your child is in early childhood education in a private daycare centre

You apply for pre-primary education in a private daycare centre by contacting the manager of the private daycare centre and submitting an application directly to the desired daycare centre. For more information, see page XXX

If you wish to have a place in pre-primary education in a municipal daycare centre, you must enrol your child for pre-primary education in Asti.



If you want to change the assigned place: how to apply for a new pre-primary education place

If you are not satisfied with the pre-primary place assigned to your child, you can reject the place and apply for a new place in Asti during **13–26 February 2025**. If you do this, you lose the place you rejected. Your child can get a pre-primary education place in the daycare centre you apply for if there are places available. You will receive information about the new pre-primary education place in the pre-primary decision by the end of March 2025. The new place cannot be accepted or rejected in Asti. If there are no places available in the daycare centre you applied for, your child will be assigned a pre-primary education place in another centre with places available in the admission area according to your address. In this case, the new pre-primary education place may also be another place than the one originally assigned to the child.

If you accept the pre-primary education place assigned to a child but then apply for another pre-primary education place, your application will be processed in a different schedule. The applications for children who do not yet have a pre-primary education place in their own admission area will be processed first. The rest of the applications will be processed after this. Your child can be admitted to the pre-primary education place you applied for if there are places available. Decisions on the pre-primary education applications submitted during the application period will be made by the end of March 2025.



Early childhood education that supplements pre-primary education

Pre-primary education is provided for four hours a day, generally between 8.30 am and 13.30 pm. Extended hours in pre-primary education can be arranged between 8:00 and 16:00 based on children's attendance times. Every child must attend pre-primary education during this period.

Supplementary early childhood education means that children are in daycare centre before or after the day in pre-primary education. Supplementary early childhood education is provided in the same facility and in the same group that your child attends for pre-primary education.

If your child has attended municipal early childhood education before pre-primary education, you do not need to register separately for supplementary early childhood education. For changes in the hours of early childhood education, contact the manager of the daycare centre after you have accepted your pre-primary education place. Log in on Asti to see your current hours. You can find the information under the child's early childhood education place.

If your child is in municipal early childhood education and moves to another daycare centre for pre-primary education, early childhood education will continue at the new location.

If your child is not yet enrolled in early childhood education provided by the City of Helsinki, you must indicate your need for supplementary early childhood education when enrolling for pre-primary education. We will make a decision on pre-primary education and supplementary early childhood education based on the hours that you have chosen at the time of enrolment. You will receive a decision on early childhood education along with your pre-primary education decision.

My child needs early childhood education before the beginning of August

If your child needs early childhood education before **28 July 2025** and is not yet enrolled in early childhood education provided by the city, you must apply separately for it using the early childhood education application in Asti. Apply for a place in early childhood education no later than four months before the need for early childhood education.

I need a change to my previously stated need for early childhood education

In case of changes related to your child's daily need for early childhood education, you can contact the manager of the daycare centre after receiving the pre-primary education decision.



Pre-primary education in a private daycare centre

In Helsinki, private daycare centres also provide pre-primary education. The pre-primary education provided by private daycare centres is similar to the pre-primary education in municipal daycare centres. In addition, some private daycare centres offer pre-primary education in different languages, or pre-primary education based on Montessori or Steiner pedagogy or religious and ethics education.

You can apply for pre-primary education in a private daycare centre by contacting the manager of the daycare centre and submitting the pre-primary education application directly to the desired private daycare centre. You can find private daycare centres that provide pre-primary education and the application form at hel.fi/pre-primary-education.

The application period for pre-primary education in private daycare centres is from **8 to 21 January 2025**. Decisions on private pre-primary education will be mailed to parents and guardians in February 2025.

Pre-primary education in private daycare centres is free for parents and guardians for four hours per day. However, the private provider determines the fee for any supplementary early childhood education they provide before and after the pre-primary education. Parents and guardians can apply for private daycare allowance from Kela for supplementary early childhood education. More information is available on

Kela's website at <https://www.kela.fi/private-daycare-allowance> and the City of Helsinki's website at hel.fi/pre-primary-education.

Please note that your child can only have one pre-primary education decision at a time, and a new decision will replace the previous decision. If you have enrolled your child in pre-primary education in a municipal daycare centre and accept the pre-primary education place assigned to them, any previous decision for private pre-primary education for the child will no longer be valid. A previously issued decision for private pre-primary education will remain valid if you reject the assigned pre-primary education place in a municipal daycare centre.



Child support and pupil welfare in pre-primary education

When your child moves from early childhood education to pre-primary education, their need for support will be assessed, and the necessary support will be provided. Depending on your child's need for support, they can also participate in pre-primary education in an admission area other than the one associated with your home address, or in a group or facility that does not provide pre-primary education to others.

If your child had not been in early childhood education before the start of pre-primary education, you must inform us of your child's need for special support or medication when you enrol them.

Children who are in pre-primary education are entitled to pupil welfare services, such as the school social worker and psychologist services. Pupil welfare is primarily implemented as preventive and community-oriented activities that support the entire pre-primary education unit. Children also have the opportunity for individual pupil welfare.

Pre-primary education in Finnish sign language

In Helsinki, pre-primary education in Finnish sign language is provided at the Daycare Taneli in the Pitäjänmäki district. If your child is in early childhood education in Finnish sign language at Daycare Taneli, they can be assigned a pre-primary education place there, depending on their need for support.

If your child is not in early childhood education in Finnish sign language, but you would like to get a place for your child in pre-primary education in Finnish sign language, notify us of your child's need for support when you enrol them in pre-primary education either by calling our Service Guidance for Early Childhood Education at +358 9 310 80488 or by email at varepalveluohjaus@hel.fi.



For the new pre-primary education pupil



Colour with the correct colours according to the numbers.



Helsinki

Enquiries on getting a place in pre-primary education:

Service Guidance for Early childhood education and pre-primary education
varepalveluohjaus@hel.fi

tel. +358 9 310 80488 Mon–Fri 9.00–12.00 pm noon (Thu 9.00–11.00)

Phone service in Swedish: Tue 9.00–12.00 pm noon.

Other enquiries on pre-primary education

Advisory Services, Education Division

koulutusneuvonta@hel.fi

tel. +358 9 310 44986 Mon–Fri 10.00–12.00 pm noon and 13.00–15.00

Työpajankatu 8, 00580 Helsinki

PO Box 58300, 00099 City of Helsinki

Asti user guidance

tel. +358 9 310 88800 Mon–Fri 8.00–18.00

hel.fi/pre-primary-education

Follow us:



#HelsinkiOppii



#HelsinkiOppii



Helsingin kasvatus ja koulutus



Kasvatuksen ja koulutuksen
toimiala

hel.fi/en/childhood-and-education/pre-primary-education

Publisher: City of Helsinki's Education Division

Photographs: Maija Astikainen

Illustrator: Riku Ounaslehto

Printed by Grano Oy, 12/2023

Information in this guide was revised in December 2023. We reserve the right to make changes.

For up-to-date information, see hel.fi/en/childhood-and-education/pre-primary-education.

