

Cruise Baltic COVID-19 overview

Number of people vaccinated against COVID-19 in the Baltic countries

Page 2

Number of people vaccinated against COVID-19 in the main source markets

Page 3

Cruise Lines' actions toward COVID-19

Page 4

Baltic countries border restrictions

Page 9

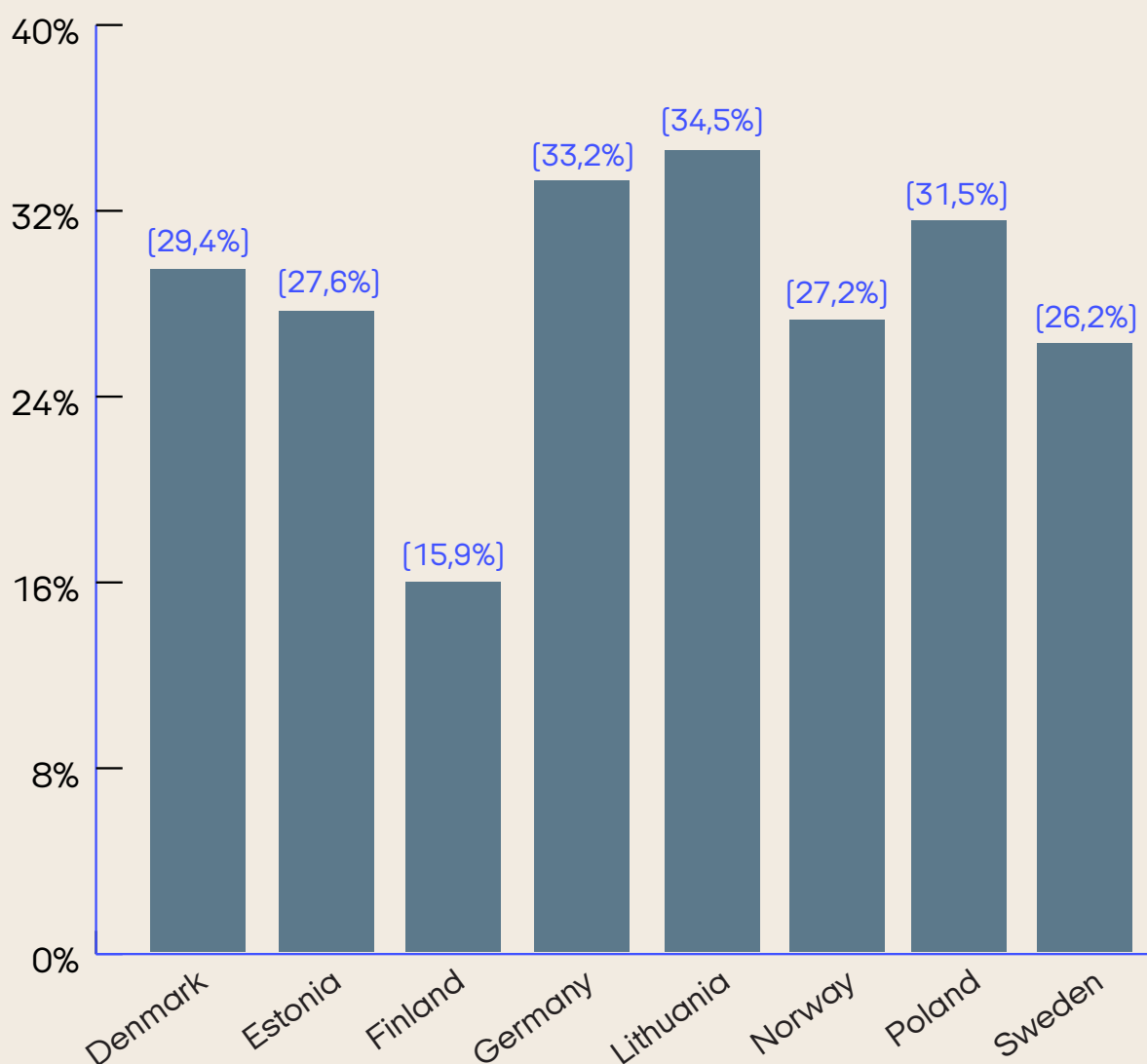
Updated
25.06.21



Number of people vaccinated against COVID-19 in the Baltic countries

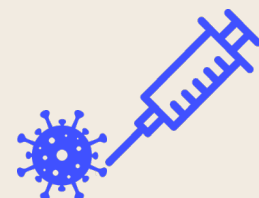
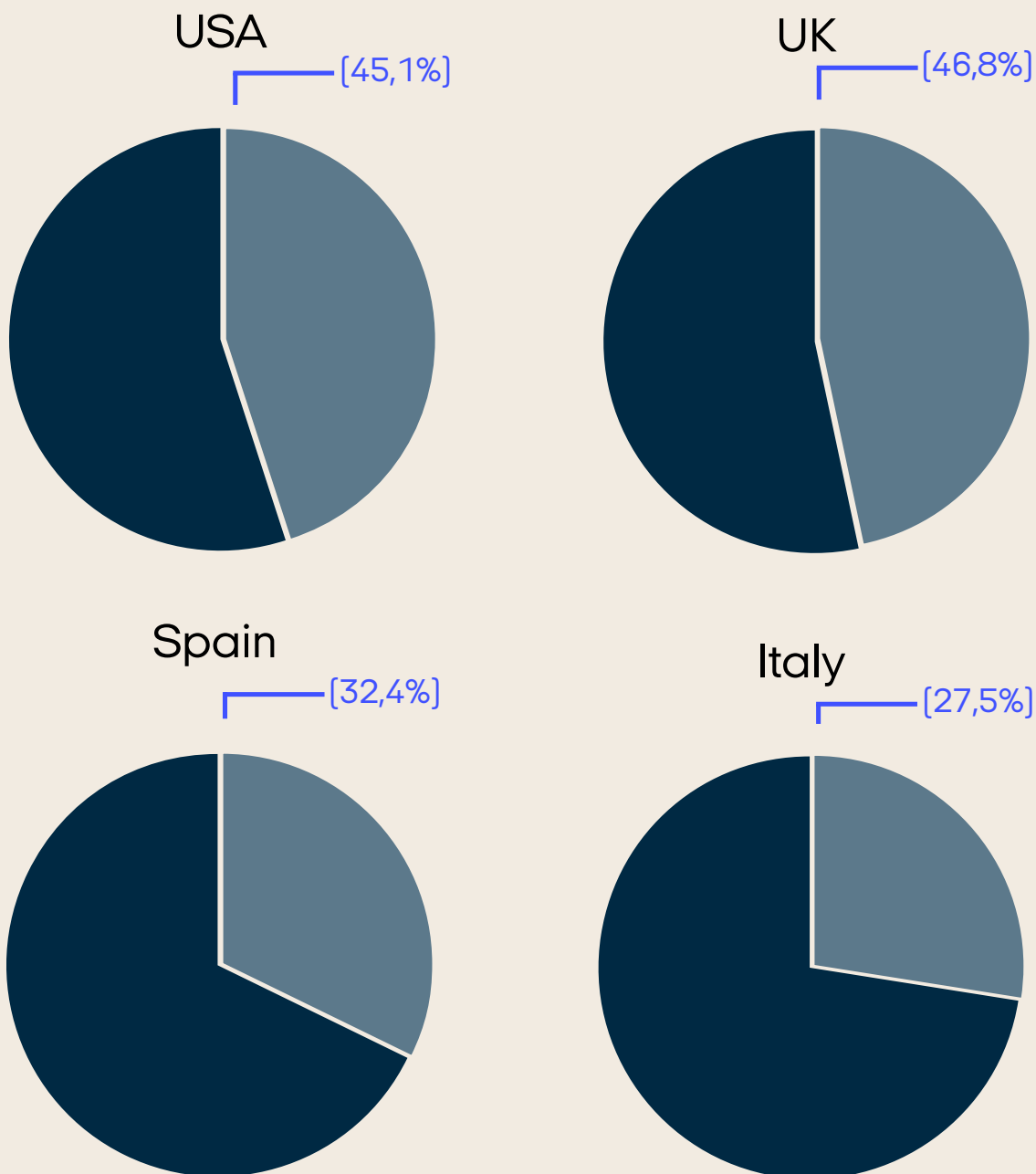
Illustrated in the diagram below is the share [in %] of the total population that have received all doses prescribed by the vaccination protocol in each of the Baltic countries. To enter the data site, click [HERE](#)

People vaccinated



Number of people vaccinated against COVID-19 in the main source markets

Illustrated in the diagram below is the share [in %] of the total population that have received all doses prescribed by the vaccination protocol in each of main source markets. To enter the data site, click [HERE](#)



Cruise Lines' actions toward COVID-19

To access the Cruise Line's websites with more info on COVID-19, click on their company names.



Cruise Line

Status

AIDA Cruises

Have resumed operations in the Mediterranean. Check link for more information

Azamara

Resumes operations in Greece aboard the Azamara Quest by the end of August, but extends their cancellations aboard Azamara Journey through 29 September and Azamara Pursuit through 14 September

Carnival Cruise Line

Check link to see the status of specific sailings

Celebrity Cruises

Celebrity extends the suspension of all sailings through 30 June, excluding all ships which have recently announced many new homeports around the globe (these ports are NOT in the Baltic Sea region)

Costa Cruises

Announced a series of Mediterranean sailings this summer, while affirming its Northern Europe and other cruises scheduled until mid-September are cancelled

Crystal Cruises

Cancels all July - December 2021 Europe voyages aboard Crystal Symphony and all voyages aboard Crystal Esprit through 26 September

Cunard

Has further extended its pause in operations. All voyages on Queen Elizabeth after 18 October and on or before 9 March 2022 are now cancelled and will be replaced with new voyages. Queen Mary 2's 2022 World Voyage from 3 January to 24 April is unfortunately now cancelled. All voyages on Queen Victoria between 10 September and 29 April 2022 are cancelled.

New status

Cruise Lines' actions toward COVID-19



Cruise Line

Status

Disney Cruise Line	Disney Dream departures through 6 August, Disney Fantasy departures through 28 August, Disney Wonder departures through 19 September, and Disney Magic departures in the US through 4 November are cancelled. The Disney Magic will set sail in the United Kingdom for a limited time this summer on short voyages limited to UK residents. Check link for more info.
Fred. Olsen Cruise Lines	Cancels all cruises on Borealis until July, Bolette until August and Balmoral up until the end of November. Braemar's cruises will be cancelled up until Spring 2022.
New status G Adventures	Suspends all G Adventures and National Geographic Journeys with G Adventures tours through to 31 August
New status Grand Circle Cruise Line	Cancels operations until 28 August with some exceptions. Check links for further details.
Hapag-Lloyd Cruises	Information not available
New status Holland America Line	Is currently not operating in the Baltic Sea. They have announced a restart of cruise operations in the US.
Hurtigruten	Are operating in Norway with a limited number of cruises, but most international expedition cruises are cancelled. Check link for detailed info on expedition cruises cancellations
Majestic International Cruises	Information not available
Marella Cruises	Cancels sailings on Marella Discovery and Marella Discovery 2 through 31 July. Check link for further details

Cruise Lines' actions toward COVID-19



Cruise Line

Status

MSC Cruises

Will resume operations in the Baltic with MSC Seaview from July. Check link for further details

Mystic Cruises

Information not available

National Geographic Expeditions

Cancels all departures through 30 June. Additionally, trips operated in collaboration with G Adventures and Scenic River Cruises are canceled through 31 July

Noble Caledonia

Will resume domestic cruises from June. With regards to our international cruises and tours, they await further updates from the government pertaining to travel restrictions

New status

Norwegian Cruise Line

Have extended suspension of Pride of America through 20 November, Norwegian Dawn through 21 November, Norwegian Joy through 13 November, Norwegian Sky through 21 January 2022 and Norwegian Star through 2 January 2022.

Oceania Cruises

Resumes operations with Marina departing from Copenhagen on 29 August. Additional ships are planned to resume operations by October

New status

P&O Cruises

Resume operations in the Mediterranean and Southern Europe by the end of September, but still have to cancel cruises on Ventura until 3 October, Azura 10 December, Arcadia 27 March 2022 and Aurora 13 April 2022

Paul Gauguin Cruises

Cancels operations up to and including 21 August

Phoenix Reisen

Check link for info on cancelled cruises

Cruise Lines' actions toward COVID-19

Cruise Line

Status



New status

Plantours

Have resumed operations in the Mediterranean. Check link for more information

Ponant

Cancels all operations until June. Check link for more information on specific cruises

New status

Princess Cruises

Cancels operations of their Europe cruises from Southampton until 25 September and the remaining 2021 Europe cruises on Island Princess

Regent Seven Seas Cruises

Resumes operations with Seven Seas Splendor cruising from Southampton, UK on 11 September

New status

Royal Caribbean Cruise Line

Have resumed operations. Check link for more information

New status

Saga

Cancel operations of their first two 'return to service' cruises on 27 June and 3 July

Scenic

Resumes operations from Portugal from 30 July for guests from the United Kingdom and United States

New status

Seabourn

Has a plan for a full return to cruising with all five ships. Click link for details on each ship.

New status

Seacloud

Resumes operation in August to Greece, France and Italy

Cruise Lines' actions toward COVID-19

Cruise Line

Status



SeaDream

Currently sailing in Greece and Mediterranean. Not much information available on canceled cruises / return to service

New status

Silversea

Postpones their return to service. Silver Moon will set sail on 18 June in Greece and Cyprus and other ships will follow. Check link for details on all ships.

New status

Star Clippers

Royal Clipper saildates are canceled until 3 August and Star Flyer are canceled until 21 August. Star Clipper saildates are cancelled until 13 November

The World

Returns to service in July in Greece

TUI Cruises

Are currently operating in the Med, and are also sailing in the Baltic sea region. Check link for further details

Viking Ocean Cruises

Cancels select 2021 departures on Viking Jupiter, Viking Sea, Viking Sky, Viking Star and Viking Venus. Welcome back voyages planned but not in the Baltic Sea

Virgin Voyages

Cancels operations with Scarlet Lady through 17 September

Windstar Cruises

Extends the suspension of a number of sailings. Star Legend is scheduled to resume operation on 4 September




Baltic countries border restrictions

Below is an overview of the countries within the Baltic region with links to information about borders restrictions. The colours are indicating whether visitors are allowed to cross the borders either freely or with restrictions.

 *No restrictions*

 *Restrictions apply*

 *No entry*

Denmark

- Click [HERE](#) for information about the current border restrictions in Denmark and [HERE](#) for the official health authorities

Estonia

- Click [HERE](#) for information about the current border restrictions in Estonia and [HERE](#) for the official health authorities

Finland

- Click [HERE](#) for information about the current border restrictions in Finland and [HERE](#) for the official health authorities

Germany

- Click [HERE](#) for information about the current border restrictions in Germany and [HERE](#) for the official health authorities

Lithuania

- Click [HERE](#) for information about the current border restrictions in Lithuania and [HERE](#) for the official health authorities

Norway

- Click [HERE](#) for information about the current border restrictions in Norway and [HERE](#) for the official health authorities

Poland

- Click [HERE](#) for information about the current border restrictions in Poland and [HERE](#) for the official health authorities

Sweden

- Click [HERE](#) for information about the current border restrictions in Sweden and [HERE](#) for the official health authorities

Russia

- Click [HERE](#) for information about the current border restrictions in Russia