

Helsinki

Statistical Yearbook of Helsinki

2025

Statistical Yearbook of Helsinki

2025

23rd volume

The data in the tables and statistical figures are available in an accessible format by e-mail at kaupunkitieto.kirjasto(at)hel.fi

City of Helsinki. Executive Office. Urban Research and Statistics

Address	P.O. Box 550. FI-00099 City of Helsinki. Finland (Työpajankatu 8)
Telephone	+358 9 310 43297
Inquiries	Ari Jaakola. tel. +358 9 310 43608. ari.jaakola@hel.fi Solja Saarto. tel. +358 310 36378. solja.saarto.@hel.fi
ISBN	978-952-386-738-3

Contents

- Preface 4
- Explanation of symbols 5
- 1. Area and environment..... 7
- 2. Population..... 10
- 3. Housing..... 21
- 4. Transport and Tourism 29
- 5. Health care 33
- 6. Social welfare 38
- 7. Education 41
- 8. Culture and leisure 47
- 9. Energy and water supply..... 51
- 10. City finances and personnel 54
- 11. Labour force 57
- 12. Economic activities 61
- 13. Income and consumption 65
- 14. Justice and public safety 69
- 15. Elections 72

Preface

The Helsinki Statistical Yearbook is a statistical publication intended for international readers who are interested in statistical information on Helsinki. It compiles a wide range of statistics describing Helsinki and its residents. It presents a comprehensive picture of Helsinki, its residents and development based on reliable statistical data.

In addition to the statistics on Helsinki, the yearbook offers some comparative statistics regarding the Helsinki Metropolitan Area, the Helsinki Region and Finland as a whole and its biggest cities. The various themes and their development are described in a total of 71 statistical tables.

The statistics included in this yearbook represent only a small portion of the statistics maintained by the City of Helsinki. A broader range of the city's statistical data and research information is available on the website at <https://kaupunkitieto.hel.fi>. Statistical data describing Helsinki and its districts, as well as the wider Helsinki Region, is also available in the open statistical databases maintained by the City of Helsinki (stat.hel.fi). Furthermore, the tables of the yearbook are available as open data on the Helsinki Region Infoshare web service (www.hri.fi). The latter contains all the statistical tables published in the yearbook since 2002. In addition to this, library of Urban Research and Statistics provides an information service related to urban research and statistics in Helsinki.

The yearbook is compiled by the Urban Research and Statistics Unit in the City Executive Office, but the statistics included in the book have been provided by many informants in the city organization and outside it. The editorial work for this year's edition was carried out by Information Service Secretary **Solja Saarto**. The layout was designed by Graphic Designer **Lotta Haglund** and prepared by Graphic Designer **Venla Tirkkonen**. I want to warmly thank all our cooperation partners within and outside the city administration for their invaluable contribution to the completion of the Statistical Yearbook of Helsinki 2025.

Helsinki, November 2025

Ari Jaakola

Statistics and Information Services Manager

Explanation of symbols

Coefficients for monetary value

2023 currency rate		2024 currency rate	
Year	Coefficient	Year	Coefficient
1995	0,2778	1995	0,2821
2000	0,2573	2000	0,2613
2005	1,4406	2005	1,4631
2010	1,3110	2010	1,3315
2020	1,1631	2020	1,1813
2021	1,1381	2022	1,0791
2022	1,0625	2023	1,0156
2023	1,0000	2024	1,0000

Explanation of symbols

Magnitude nil	–
Magnitude less than half of unit employed	0
Data subject to secrecy	...
Data not available	..
Category not applicable	.
Preliminary data	*
Corrected figure	◆
Men	M
Women	W

A horizontal line drawn across a time series shows substantial breaks in the homogeneity of a series.

Reader instructions

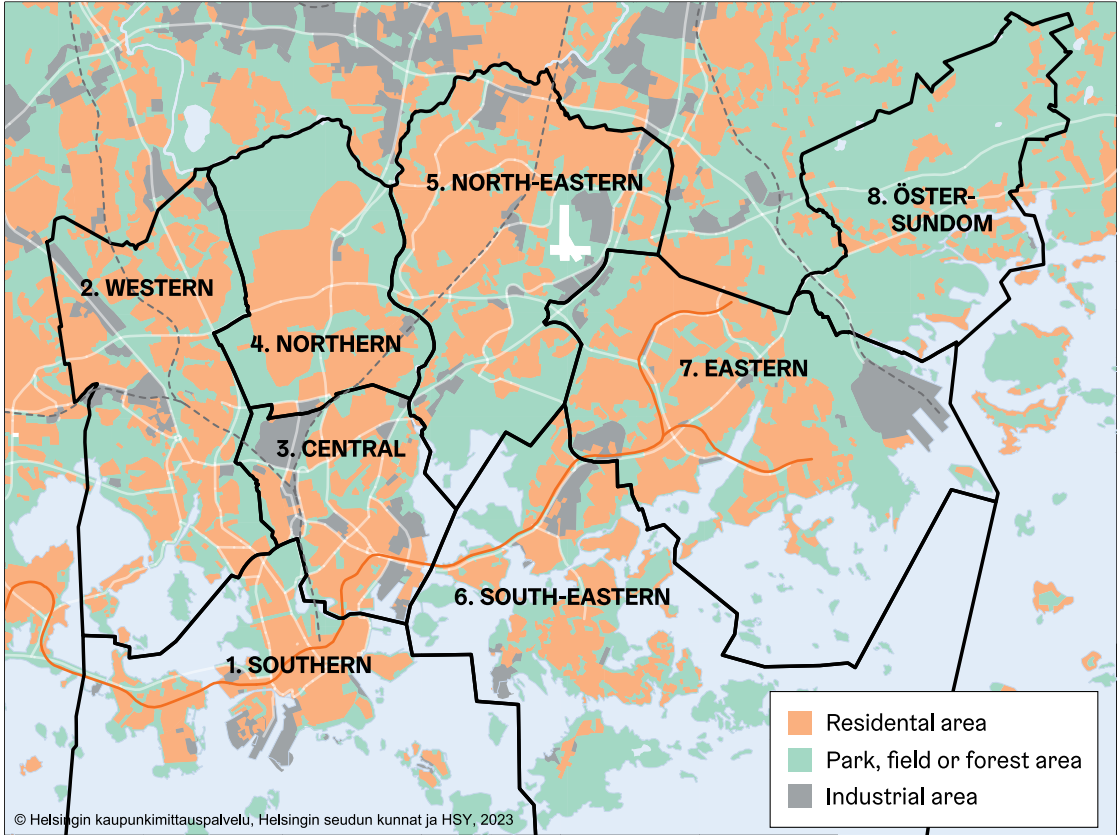
The book contains some data denominated in euros expressed in fixed monetary value for 2023 or 2024. This has been done in an attempt to eliminate the impacts of changes in monetary value on the figures. The cost of living index 1951:10 = 100 has been used as the **deflation coefficient**. The coefficients for different years are stated in conjunction with the symbols.

There is always a reference in conjunction with the euro-denominated data as to whether the figures have been stated in fixed monetary value for 2023 or 2024. Where no reference is stated, the euro-denominated data is in the current monetary value. Where figures are examined **in relation to the population figure**, the average population figure has been used as the population figure if the data apply to the whole year.

The year book presents **district data** in accordance with the **district division system** approved by the City Board. The district division system is at four levels with the city being divided into 8 major districts, which are subdivided into a total of 34 districts. These districts comprise sub-districts and small districts in the official district division. There are currently 148 sub-districts and 404 small areas. Each major district, district and sub-district has a code and name confirmed by the City Board and small areas have a code only. Major districts have a single-digit code from 1-8 and districts have a three-digit code, with the first digit designating the major district in which the district lies. The three-digit code of sub-districts is formed from the city area code (the two first digits) and the sub-district code (the last digit). A full list of the district names and codes in the district division system can be found with the district division map appendix.

The Helsinki Metropolitan Area comprises the cities of Helsinki, Espoo, Vantaa and Kauniainen. **The Helsinki Region** comprises these four cities and those of Hyvinkää, Järvenpää, Kerava, Kirkkonummi, Nurmijärvi, Sipoo, Tuusula, Vihti and, since Jan 1, 2005, Mäntsälä and Pornainen.

Major districts and land use in Helsinki 2024



Area and environment

List of diagrams and tables

1.1	Area and population density by major district 2025.....	8
1.2	Air temperature and water-level 1995–2024.....	8
1.3	Respirable particles (PM10), nitrogen dioxide and ozone in the air 2005–2024.....	9
1.4	Green house gas emissions corresponding to consumption in Helsinki 1990–2024	9

1.1

Area and population density by major district 2025

Major District	Area, km ²		Inhabitants per km ² land
	Total	of which land ¹	
1. Southern Major District	152,7	18,1	6,924
2. Western Major District	36,5	30,5	3,788
3. Central Major District	17,7	15,8	6,735
4. Northern Major District	23,2	23,2	1,945
5. North-Eastern Major District	37,6	36,4	2,799
6. South-Eastern Major District	362,4	25,2	2,360
7. Eastern Major District	56,5	37,5	3,061
8. Östersundom Major District	28,7	26,2	67
Islands not included in these areas	3,6	3,6	
Helsinki	719,0	216,5	3,159
Espoo	528,0	330,3	972
Vantaa	240,4	240,4	1,045
Kauniainen	6,0	6,0	1,709
Helsinki Region	5 518,9	3 841,5	418

¹ Incl. lakes and streams.

Source: Helsinki Municipal Data System, City of Helsinki, Urban Environment Division and National Land Survey of Finland (NLS).

1.2

Air temperature and water-level 1995–2024

	Air temperature (°C) ¹			Water-level (cm) ²		
	Mean	Max.	Min.	Mean	Max.	Min.
1995	6.2	27.7	-24,4	8	94	-56
2000	7.2	26.3	-18,0	6	85	-51
2005	6.6	29.6	-18,3	4	151	-44
2010	5.0	30.1	-22,6	-10	64	-93
2015	7.8	26.9	-14,0	10	114	-45
2020	8.7	28.0	-8.2	13	104	-20
2024	8.0	26.6	-21,2	1	100	-57
I	-6,8	3.6	-21,2	9	51	-38
II	-2,4	4.2	-16,6	20	73	-23
III	0.9	9.3	-7,3	-23	1	-57
IV	3.6	18.1	-3,5	-4	40	-35
V	13.8	26.3	-0,1	-32	-12	-51
VI	17.2	26.6	8.0	-6	15	-33
VII	19.0	25.9	11.0	4	40	-21
VIII	18.4	25.3	10.6	9	32	-6
IX	15.5	25.3	3.1	-7	38	-30
X	9.1	15.2	0.9	-2	36	-32
XI	4.0	10.3	-3,3	23	100	-17
XII	1.2	7.2	-9,2	17	70	-31

¹ At Kaisaniemi monitoring station.

² At surface by a quay in the Kaivopuisto district.
The measure is the theoretical average water level.

Source: Finnish Meteorological Institute.

1.3

Respirable particles (PM₁₀), nitrogen dioxide and ozone in the air 2005–2024

Air quality	Annual mean, µg/m ³				
	2005	2010	2015	2020	2024
Respirable particles content, PM₁₀					
Mannerheimintie 5 ¹	30	25	20	16	17
Kallio	15	15	12	9	9
Leppävaara ² (in Espoo)	23	15	20	14	14
Tikkurila (in Vantaa)	23	16	12	12	12
Nitrogen dioxide content, NO₂					
Mannerheimintie 5 ¹	43	41	32	16	16
Kallio	22	23	18	10	10
Leppävaara ² (in Espoo)	24	28	23	14	13
Tikkurila (in Vantaa)	30	30	21	14	13
Ozone content, O₃					
Mannerheimintie 51	37	39	41
Kallio	48	48	50	51	55
Tikkurila (in Vantaa)	46	44

¹ Measuring started in 2005.

² Location of monitoring station changed in January 2005 and 2010.

Source: HSY Helsinki Region Environmental Services Authority: Ilmanlaatu pääkaupunkiseudulla.

1.4

Green house gas emissions corresponding to consumption in Helsinki 1990–2024

Total emissions, 1,000 t CO₂ equiv.

	1990	2000	2010	2015	2020	2024	1990–2024 change%
Total	3,514	3,120	3,249	2,602	2,344	1,632	-54
District heating	1,662	1,205	1,362	1,215	1,236	744	-55
Electrical heating	114	105	90	79	72	58	-49
Individual property heating	78	96	111	73	52	32	-59
Consumer electricity	516	686	838	481	314	197	-62
Transportation	686	710	719	624	577	543	-21
Industry and work machinery	168	97	26	20	33	15	-91
Waste and waste water treatment	288	221	100	110	60	41	-86
Agriculture	2	1	1	1	1	1	-54

Emissions per capita, tons of CO₂ equiv./inhabitant

	1990	2000	2010	2015	2020	2024	1990–2024 change%
Total	7.1	5.6	5.5	4.1	3.6	2.4	-67
District heating	3.4	2.2	2.3	1.9	1.9	1.1	-68
Electrical heating	0.2	0.2	0.2	0.1	0.1	0.1	-63
Individual property heating	0.2	0.2	0.2	0.1	0.1	0.0	-71
Consumer electricity	1.0	1.2	1.4	0.8	0.5	0.3	-72
Transportation	1.4	1.3	1.2	1.0	0.9	0.8	-43
Industry and work machinery	0.3	0.2	0.0	0.0	0.1	0.0	-94
Waste and waste water treatment	0.6	0.4	0.2	0.2	0.1	0.1	-90
Agriculture	0.0	0.0	0.0	0.0	0.0	0.0	-67

Source: City of Helsinki. Urban Environment Division.

List of diagrams and tables

2.1	Helsinki's population 1875-2024 ¹	11
2.2	Population by age and sex on Dec 31, 2000–2024	12
2.3	Population on Dec 31, 2000–2024 and a projection for Dec 31, 2039 by district and sub district.....	13
2.4	Population by citizenship on Dec 31, 2005-2024	14
2.5	Persons having received a Finnish citizenship, by mother tongue 2010–2024	15
2.6	Population by religious affiliation on Dec 31, 2000–2024	15
2.7	Families in Helsinki by type and age of children 1995–2024 ¹	16
2.8	Population changes by district 2024	17
2.9	Births in Helsinki in 1901–2024.....	18
2.10	Deaths ¹ in Helsinki in 1901–2024	19
2.11	Life expectancy(average expectation of remaining lifetime) 1991–2024.....	19
2.12	Direction of migration 1986–2024.....	20
	Population by mother tongue and age Dec 31, 2024.....	20

Year	Change ²			Men	Women	Women per 1,000 men
	Total	Number	%			
<i>1 Jan</i>						
1875	23,070	1,313	6.0	10,236	12,834	1,254
1880	36,346	13,276	57.5	16,403	19,943	1,216
1885	41,579	5,233	14.4	18,746	22,833	1,218
1890	56,236	14,657	35.3	25,519	30,717	1,204
1895	64,554	8,318	14.8	28,213	36,341	1,288
1900	79,126	14,572	22.6	35,010	44,116	1,260
1905	93,626	14,500	18.3	41,198	52,428	1,273
1910	118,736	25,110	26.8	52,179	66,557	1,276
1915	153,467	34,731	29.3	69,102	84,365	1,221
1920	152,200	-1 267	-0.8	64,434	87,766	1,362
1925	162,070	9,870	6.5	67,545	94,525	1,399
1930	205,833	43,763	27.0	87,022	118,811	1,365
1935	225,482	19,649	9.5	94,146	131,336	1,395
1940	252,484	27,002	12.0	105,777	146,707	1,387
1945	276,277	23,793	9.4	113,710	162,567	1,430
1950	368,519	92,242	33.4	157,080	211,439	1,346
1955	403,970	35,451	9.6	174,553	229,417	1,314
1960	448,315	44,345	11.0	196,689	251,626	1,279
1965	494,796	7,374	1.5	219,975	274,821	1,249
1970	523,677	-1 951	-0.4	233,373	290,304	1,244
1975	502,961	-7 244	-1.4	223,252	279,709	1,253
1980	483,675	-1 728	-0.4	215,061	268,614	1,249
1985	484,122	-269	-0.1	216,411	267,711	1,237
<i>31 Dec</i>						
1990	492,400	1,771	0.4	222,566	269,834	1,212
1995	525,031	9,266	1.8	240,638	284,393	1,182
2000	555,474	4,351	0.8	257,399	298,075	1,158
2001	559,718	4,244	0.8	260,070	299,648	1,152
2002	559,716	-2	0.0	260,236	299,480	1,151
2003	559,330	-386	-0.1	260,441	298,889	1,148
2004	559,046	-284	-0.1	260,573	298,473	1,145
2005	560,905	1,859	0.3	261,627	299,278	1,144
2006	564,521	3,616	0.6	263,343	301,178	1,144
2007	568,531	4,010	0.7	265,728	302,803	1,140
2008	576,632	8,101	1.4	270,176	306,456	1,134
2009	583,350	6,718	1.2	273,577	309,773	1,132
2010	588,549	5,199	0.9	276,361	312,188	1,130
2011	595,384	6,835	1.2	280,064	315,320	1,126
2012	603,968	8,584	1.4	284,562	319,406	1,122
2013	612,664	8,696	1.4	288,957	323,707	1,120
2014	620,715	8,051	1.3	293,113	327,602	1,118
2015	628,208	7,493	1.2	297,151	331,057	1,114
2016	635,181	6,973	1.1	301,010	334,171	1,110
2017	643,272	8,091	1.3	305,237	338,035	1,107
2018	648,042	4,770	0.7	307,633	340,409	1,107
2019	653,835	5,793	0.9	310,702	343,133	1,104
2020	656,920	3,085	0.5	312,196	344,724	1,104
2021	658,457	1,537	0.2	313,429	345,028	1,101
2022	664,028	5,571	0.8	316,540	347,488	1,098
2023	674,500	10,472	1.6	322,067	352,433	1,094
2024	684,018	9,518	1.4	326,909	357,109	1,092

¹ Figures include foreign nationals from 1951 on (and for the year 1915, when Russian subjects were included).

² Up until 1960 the change over the previous 5 years, after 1960 the change during the previous year.

Source: Census lists 1875–1989 and since 1990 Population Register Centre.

	2000	2005	2010	2015	2020	2024
Total population						
Total, number	555,474	560,905	588,549	628,208	656,920	684,018
0–6 year olds	40,306	36,884	40,064	45,379	44,722	42,922
7–15	48,501	48,746	45,158	47,675	54,887	59,298
16–17	15,880	16,553	17,852	16,085	16,665	19,323
18–29	100,626	103,228	110,221	115,287	109,843	108,628
30–44	135,490	129,166	132,024	146,508	163,810	174,243
45–64	140,105	148,466	155,164	153,210	152,687	159,129
65–74	39,447	40,519	48,163	60,865	63,660	60,371
75–84	25,651	27,297	28,376	30,250	36,523	44,775
85–89	6,399	6,556	7,519	8,357	8,688	9,653
90–94	2,569	2,781	3,134	3,561	4,246	4,320
95–	500	709	874	1,031	1,189	1,356
Total %	100	100	100	100	100	100
0–6 year olds	7.3	6.6	6.8	7.2	6.8	6.3
7–15	8.7	8.7	7.7	7.6	8.4	8.7
16–17	2.9	3.0	3.0	2.6	2.5	2.8
18–29	18.1	18.4	18.7	18.4	16.7	15.9
30–44	24.4	23.0	22.4	23.3	24.9	25.5
45–64	25.2	26.5	26.4	24.4	23.2	23.3
65–74	7.1	7.2	8.2	9.7	9.7	8.8
75–84	4.6	4.9	4.8	4.8	5.6	6.5
85–89	1.2	1.2	1.3	1.3	1.3	1.4
90–94	0.5	0.5	0.5	0.6	0.6	0.6
95–	0.1	0.1	0.1	0.2	0.2	0.2
Percentage of men						
Total	46.3	46.6	47.0	47.3	47.5	47.8
0–6 year olds	50.9	50.6	50.9	51.4	51.0	51.3
7–15	51.1	51.0	51.0	51.0	51.2	51.2
16–17	49.7	50.2	50.1	49.1	49.7	49.7
18–29	47.5	47.2	46.7	46.4	46.0	46.0
30–44	49.5	50.2	50.8	51.1	50.9	50.4
45–64	45.8	46.2	46.7	47.4	48.4	49.5
65–74	40.3	41.3	42.1	42.7	42.7	43.8
75–84	29.2	32.5	35.6	37.2	38.4	39.0
85–89	20.8	22.4	25.5	29.1	32.1	32.4
90–94	17.2	16.5	18.8	21.4	24.6	27.1
95–	12.8	14.7	14.0	14.9	15.5	18.5

Source: Statistics Finland.

	2000	2010	2020	2024	2039
Helsinki	551,123	583,350	656,920	684,018	811,406
%	100	100	100	100	100
<i>Major Districts</i>					
1. Southern Major District	97,015	99,683	121,294	125,324	142,168
%	17.6	17.1	18.5	18.3	17.5
101 Vironniemi district	11,772	11,671	12,915	13,192	13,392
102 Ullanlinna district	22,668	23,050	24,859	24,913	29,112
103 Kampinmalmi district	29,796	30,394	43,220	45,993	51,215
104 Taka-Töölö district	14,432	14,502	15,478	15,901	16,859
105 Lauttasaari district	18,347	20,066	24,822	25,325	31,589
2. Western Major District	100,639	101,328	111,929	115,682	135,274
%	18.3	17.4	17.0	16.9	16.7
201 Reijola district	15,775	15,702	17,101	17,097	19,022
202 Munkkiniemi district	17,369	17,328	18,652	19,391	21,003
203 Haaga district	26,468	25,908	27,714	27,784	31,381
204 Pitäjänmäki district	14,948	15,465	18,240	18,842	24,802
205 Kaarela district	26,079	26,925	30,222	32,568	39,065
3. Central Major District	73,252	78,561	96,548	106,313	141,036
%	13.3	13.5	14.7	15.5	17.4
301 Kallio district	25,255	25,606	32,420	37,292	47,971
302 Alppiharju district	11,875	11,731	11,940	11,540	11,610
303 Vallila district	11,091	12,306	16,851	16,558	22,712
304 Pasila district	8,591	8,484	10,298	15,485	28,442
305 Vanhakaupunki district	16,440	20,434	25,039	25,438	30,302
4. Northern Major District	41,250	41,164	43,288	45,092	47,432
%	7.5	7.1	6.6	6.6	5.8
401 Maunula district	8,984	8,584	9,244	9,346	9,156
402 Länsi-Pakila district	6,403	6,587	7,001	7,375	6,733
403 Tuomarinkylä district	8,181	8,585	8,730	8,630	8,884
404 Oulunkylä district	14,145	13,634	14,666	16,113	19,379
405 Itä-Pakila district	3,537	3,774	3,647	3,628	3,279
5. North-Eastern Major District	83,842	92,690	100,305	101,912	120,869
%	15.2	15.9	15.3	14.9	14.9
501 Latokartano district	12,557	21,149	24,813	25,248	29,977
502 Pukinmäki district	9,176	8,292	8,786	8,863	12,061
503 Malmi district	26,023	27,947	29,211	30,653	42,144
504 Suutarila district	11,844	11,304	11,459	11,621	11,479
505 Puistola district	18,346	18,372	20,419	20,050	19,246
506 Jakomäki district	5,896	5,626	5,617	5,477	5,962
6. South-Eastern Major District	44,918	46,666	55,858	59,539	74,979
%	8.2	8.0	8.5	8.7	9.2
601 Kulosaari district	3,761	3,770	4,126	4,193	3,961
602 Herttoniemi district	24,574	26,423	30,271	31,423	36,113
603 Laajasalo district	16,583	16,473	21,461	23,923	34,904
7. Eastern Major District	90,355	103,227	112,869	114,734	132,421
%	16.4	17.7	17.2	16.8	16.3
701 Vartiokylä district	20,235	21,363	21,832	23,010	27,247
702 Myllypuro district	8,941	9,613	12,695	12,315	15,140
703 Mellunkylä district	35,932	36,425	39,381	40,123	44,192
704 Vuosaari district	25,247	35,826	38,961	39,286	45,842
8. Östersundom Major District	.	2,113	1,830	1,755	3,834
%	.	0.4	0.3	0.3	0.5
801 Östersundom district	.	2,113	1,830	1,755	3,834
Others	19,852	17,918	12,999	13,667	13,394
%	3.6	3.1	2.0	2.0	1.7
Inner Helsinki	167,721	173,899	210,135	223,420	270,649
Outer Helsinki	363,550	391,533	433,786	446,931	527,363

Helsinki's district division changed from 2013 on.
Source: Statistics Finland (2000-2020) and City of Helsinki (2025).

	2005	2010	2015	2020	2024
All Helsinki residents	560,905	588,549	628,208	656,920	684,018
<i>Citizenship</i>					
Finnish	530,135	544,088	570,601	591,983	599,622
Other	30,770	44,461	57,607	64,937	84,396
Percentage of the entire population	5.5	7.6	9.2	9.9	12.3
Europe	17,541	24,651	31,902	31,353	36,509
EU countries	10,407	16,731	23,680	21,592	22,854
Estonia	4,867	8,481	12,834	10,852	9,761
Sweden	1,219	1,278	1,260	1,184	1,341
EU member state since the 2000s (other than Estonia)	562	1,691	2,540	3,180	3,897
Other northern or western European	291	349	387	1,970	2,013
Other European	6,843	7,571	7,835	7,791	11,642
Russia	5,240	6,008	6,252	5,780	6,833
Africa	4,612	6,294	7,142	7,527	9,362
North America	949	1,129	1,388	1,725	2,029
Latin America or Caribbean	601	979	1,233	1,533	1,842
Southeast or East Asia	2,571	4,333	6,198	8,221	11,788
South West or Central Asia	3,866	6,333	8,870	13,561	21,860
Australia or Oceania	188	234	282	341	374
No citizenship or citizenship unknown	442	508	592	676	632

Source: Statistics Finland.

2.5

Persons having received a Finnish citizenship,
by mother tongue 2010–2024

2

Population

	2010	2015	2020	2021	2022	2023	2024
Total	884	1,931	1,810	1,563	2,417	2,925	2,629
<i>Mother tongue</i>							
Finnish	33	49	54	44	53	65	41
Swedish	6	6	21	21	24	26	21
Russian	316	419	335	299	516	480	410
Arabic	52	122	213	273	343	520	473
Somali	67	364	250	225	300	385	329
Persian, Farsi	31	74	49	79	81	140	198
Kurdish	42	126	59	34	72	113	114
English	22	68	107	67	107	119	96
Nepali	7	47	60	31	63	90	91
Vietnamese	20	22	35	41	81	80	76
Estonian	35	60	75	58	99	73	57
Thai	8	18	30	23	34	27	50
Bengali	7	33	21	32	54	58	47
Spanish	17	37	54	31	65	53	44
Turkish	23	25	24	19	42	55	43
Urdu	6	32	11	10	19	58	36
Hindi	3	12	14	6	9	17	30
Tagalog	24	23	30	30	24	37	30
Other language	176	424	412	269	474	573	443

Source:
Statistics
Finland.

2.6

Population by religious affiliation on Dec 31, 2000–2024

	2000	2005	2010	2015	2020	2023	2024
Total	555,474	560,905	588,549	628,208	656,920	674,500	684,018
Evangelical Lutheran Church of Finland	402,454	388,276	365,523	351,029	330,660	311,117	307,778
Other Lutherans	681	631	98	121	97	81	78
Finnish Orthodox Church	8,545	9,069	9,350	9,415	8,938	8,486	8,430
Other Greek Orthodox	658	974	1,242	1,702	1,944	1,945	1,921
Jehovah's witnesses	1,512	1,590	1,667	1,662	1,485	1,353	1,359
Lutheran free churches of Finland	906	856	904	984	1,004	942	924
Roman Catholic Church in Finland	2,605	2,921	3,398	3,943	4,133	4,245	4,290
Adventist churches	271	253	240	215	201	184	186
Church of Jesus Christ of Latter-day Saints	401	416	417	483	430	379	380
Baptist congregations	113	110	96	90	75	64	70
Methodist churches	234	203	191	183	186	164	165
Jewish congregations	678	661	633	607	601	564	565
Islamic* congregations	544	2,059	3,872	5,152	8,169	9,722	10,314
Other	163	466	992	1,512	2,201	2,180	2,269
No religious affiliation	135,709	152,420	199,926	251,110	296,796	333,074	345,289

*Only registered congregations.

Source: Statistics Finland.

	All families							
	Total	Children in these	Married couples without children ²	Unmarried couples without children	Married couples, with children	Unmarried couples, with children	Mother and children	Father and children
Families, total³								
1995	131,082	115,826	38,343	20,844	42,189	7,411	19,928	2,367
2000	136,710	119,355	39,477	24,760	39,917	9,131	20,825	2,600
2005	137,776	114,924	42,195	26,387	36,741	9,429	20,353	2,671
2010	144,528	117,321	44,678	28,989	37,561	10,083	20,370	2,847
2011	146,113	118,343	44,913	29,709	37,901	10,335	20,384	2,871
2012	148,303	119,745	45,450	30,348	38,391	10,559	20,597	2,958
2013	150,602	121,664	45,731	31,304	38,925	10,887	20,726	3,029
2014	152,650	123,782	45,946	31,968	39,634	11,194	20,841	3,067
2015	154,753	125,858	46,094	32,732	40,214	11,503	21,030	3,180
2016	156,620	127,469	46,313	33,496	40,497	11,776	21,338	3,200
2017	158,063	129,541	46,759	33,506	40,934	11,930	21,662	3,272
2018	159,092	130,544	47,064	33,753	41,244	12,097	21,626	3,308
2019	160,469	131,315	47,575	34,232	41,399	12,246	21,588	3,429
2020	161,282	131,318	47,691	35,006	41,182	12,402	21,595	3,406
2021	160,797	131,327	47,290	34,999	40,926	12,845	21,286	3,451
2022	161,417	132,242	47,564	34,871	40,848	13,197	21,443	3,494
2023	163,008	134,066	47,807	34,957	41,319	13,481	21,797	3,647
2024	165,589	136,330	48,127	35,866	41,886	13,832	22,057	3,821
Families with at least one 0–17 year old child								
1995	57,073	93,423	.	.	34,813	6,891	14,036	1,333
2000	56,867	95,256	.	.	32,200	8,454	14,837	1,376
2005	55,208	93,072	.	.	30,079	8,779	14,865	1,485
2010	55,973	93,097	.	.	30,707	9,205	14,512	1,549
2011	56,410	93,761	.	.	30,989	9,364	14,510	1,547
2012	57,055	94,823	.	.	31,371	9,527	14,560	1,597
2013	57,806	96,394	.	.	31,812	9,815	14,597	1,582
2014	58,776	98,201	.	.	32,379	10,071	14,706	1,620
2015	59,877	100,148	.	.	32,990	10,299	14,873	1,715
2016	60,821	101,972	.	.	33,351	10,541	15,174	1,755
2017	61,819	104,080	.	.	33,836	10,714	15,458	1,811
2018	62,360	105,362	.	.	34,110	10,906	15,501	1,843
2019	62,972	106,633	.	.	34,392	11,089	15,565	1,926
2020	63,788	107,962	.	.	34,590	11,312	15,856	2,030
2021	64,035	108,315	.	.	34,481	11,755	15,728	2,071
2022	64,628	109,239	.	.	34,453	12,100	15,979	2,096
2023	65,620	110,386	.	.	34,884	12,280	16,221	2,235
2024	66,477	111,486	.	.	35,190	12,629	16,339	2,319
Families with at least one 0–6 year old child								
1995	30,287	41,149	.	.	18,572	5,086	6,350	279
2000	28,644	40,113	.	.	16,592	5,803	5,983	266
2005	26,623	35,974	.	.	15,413	5,462	5,469	279
2010	28,588	39,190	.	.	16,870	5,853	5,579	286
2011	29,356	40,238	.	.	17,280	6,122	5,652	302
2012	30,139	41,349	.	.	17,663	6,295	5,857	324
2013	30,981	42,547	.	.	18,131	6,559	5,965	326
2014	31,849	43,689	.	.	18,611	6,830	6,074	334
2015	32,604	44,566	.	.	18,998	7,072	6,165	369
2016	33,033	45,069	.	.	19,151	7,237	6,268	377
2017	33,368	45,296	.	.	19,233	7,381	6,382	372
2018	33,250	45,097	.	.	19,088	7,443	6,340	379
2019	33,141	44,579	.	.	18,947	7,518	6,278	398
2020	32,975	44,144	.	.	18,716	7,629	6,229	401
2021	32,459	43,399	.	.	18,228	7,911	5,943	377
2022	32,020	42,648	.	.	17,730	7,976	5,951	363
2023	32,000	42,316	.	.	17,631	8,023	5,950	396
2024	31,947	42,282	.	.	17,524	8,137	5,885	401

¹ At year-end 1990 and at turn of the year 1994/1995–2023/2024.³ Children regardless of age.² Also incl. registered couples of the same sex.

Source: Census (1990). Helsinki City's population register and Statistics Finland.

	Population Dec 31, 2024	Population change 2024 ¹	Surplus of births over deaths	Net migration		
				Total	In and out of Helsinki	Within Helsinki
Helsinki, total	684,018	9,518	856	8,751	8,751	0
<i>Major Districts</i>						
1. Southern	125,324	1,756	461	1,233	2,550	-1,317
101 Vironniemi district	13,192	96	30	55	237	-182
102 Ullanlinna district	24,913	422	74	343	502	-159
103 Kampinmalmi district	45,993	524	209	284	1,230	-946
104 Taka-Töölö district	15,901	266	13	239	412	-173
105 Lauttasaari district	25,325	448	135	312	169	143
2. Western	115,682	1,700	31	1,606	1,702	-96
201 Reijola district	17,097	313	-50	361	320	41
202 Munkkiniemi district	19,391	242	-70	306	209	97
203 Haaga district	27,784	317	-66	340	528	-188
204 Pitäjänmäki district	18,842	-45	68	-117	71	-188
205 Kaarela district	32,568	873	149	716	574	142
3. Central	106,313	2,318	310	1,965	2,571	-606
301 Kallio district	37,292	1,694	70	1,617	1,219	398
302 Alppiharju district	11,540	-32	-17	-24	414	-438
303 Vallila district	16,558	-320	61	-388	202	-590
304 Pasila district	15,485	1,297	129	1,161	569	592
305 Vanhakaupunki district	25,438	-321	67	-401	167	-568
4. Northern	45,092	1,046	-61	1,077	242	835
401 Maunula district	9,346	299	-25	323	-30	353
402 Länsi-Pakila district	7,375	210	-26	221	35	186
403 Tuomarinkylä district	8,630	25	37	-14	-25	11
404 Oulunkylä district	16,113	515	-50	553	225	328
405 Itä-Pakila district	3,628	-3	3	-6	37	-43
5. North-Eastern	101,912	618	151	453	1,020	-567
501 Latokartano district	25,248	246	101	146	345	-199
502 Pukinmäki district	8,863	234	15	216	137	79
503 Malmi district	30,653	137	-16	150	360	-210
504 Suutarila district	11,621	80	28	54	78	-24
505 Puistola district	20,050	-107	49	-173	100	-273
506 Jakomäki district	5,477	28	-26	60	0	60
6. South-Eastern	59,539	1,153	168	976	431	545
601 Kulosaari district	4,193	37	7	29	25	4
602 Herttoniemi district	31,423	508	47	450	341	109
603 Laajasalo district	23,923	608	114	497	65	432
7. Eastern	114,734	373	-64	390	1,676	-1,286
701 Vartiokylä district	23,010	303	-60	363	313	50
702 Myllypuro district	12,315	-336	-51	-298	-13	-285
703 Mellunkylä district	40,123	189	-17	185	863	-678
704 Vuosaari district	39,286	217	64	140	513	-373
8. Östersundom	1,755	13	-4	17	-1	18
801 Östersundom district	1,755	13	-4	17	-1	18
Others	13,667	541	-136	1,034	-1,440	2,474
Inner Helsinki	223,420	3,937	587	3,244	5,273	-2,029
Outer Helsinki	446,931	5,040	405	4,473	4,918	-445

¹ Incl. corrections of population figure.

Source: Statistics Finland.

	Born alive		Boys		Out of wedlock	
	Number	Live birth rate, 0/00 ¹	Number	% ²	Number	% ²
Annual average						
1901–05	2,889	28.5	1,468	50.8	453	15.7
1906–10	3,558	28.8	1,831	51.5	603	16.9
1911–15	3,464	22.0	1,776	51.3	658	19.0
1916–20	2,703	15.0	1,393	51.5	385	14.2
1921–25	2,610	13.3	1,351	51.8	261	10.0
1926–30	2,652	12.2	1,341	50.6	237	8.9
1931–35	2,575	10.6	1,322	51.3	257	10.0
1936–40	3,722	13.6	1,916	51.5	375	10.1
1941–45	5,987	20.1	3,111	52.0	462	7.7
1946–50	7,723	22.4	3,969	51.4	485	6.3
1951–55	6,731	17.2	3,420	50.8	488	7.3
1956–60	7,505	17.3	3,868	51.5	491	6.5
1961–65	8,492	17.6	4,343	51.1	510	6.0
1966–70	8,389	15.9	4,274	50.9	569	6.8
1971–75	6,454	12.6	3,299	51.1	625	9.7
1976–80	5,994	12.3	3,114	52.0	828	13.8
1981–85	5,939	12.3	3,031	51.0	998	16.8
1986–90	6,110	12.5	3,129	51.2	1,553	25.4
1991–95	6,692	13.2	3,440	51.4	2,261	33.8
1996–2000	6,351	11.7	3,238	51.0	2,449	38.6
2001–2005	6,163	11.0	3,156	51.2	2,463	40.0
2006–2010	6,377	11.1	3,254	51.0	2,554	40.1
2011–2015	6,816	11.2	3,513	51.5	2,814	41.3
2016–2020	6,548	10.2	3,355	51.2	2,737	41.8
Annually						
2010	6,907	11.2	3,520	51.0	2,850	41.3
2011	7,016	11.2	3,654	52.1	2,977	42.4
2012	6,803	10.8	3,483	51.2	2,881	42.3
2013	6,566	10.3	3,322	50.6	2,750	41.9
2014	6,388	9.9	3,267	51.1	2,610	40.9
2015	6,332	9.7	3,221	50.9	2,658	42.0
2016	6,803	10.8	3,483	51.2	2,881	42.3
2017	6,566	10.3	3,322	50.6	2,750	41.9
2018	6,388	9.9	3,267	51.1	2,610	40.9
2019	6,332	9.7	3,221	50.9	2,658	42.0
2020	6,650	10.1	3,482	52.4	2,786	41.9
2021	7,082	10.8	3,605	50.9	3,224	45.5
2022	6,176	9.3	3,188	51.6	2,822	45.7
2023	6,099	9.1	3,149	51.6	2,751	45.1
2024	6,276	9.2	3,213	51.2	2,888	46.0

¹ Per 1,000 persons in the average population number.

² Of all live births.

Source: Statistics Finland and for 1986–93 Helsinki's population data system.

2.10

Deaths¹ in Helsinki in 1901–2024

	Men		Women		Total		Of which less than 1 year olds	
	Number	%	Number	%	Number	General death rate 0/00 ²	Total	Boys
Annual average								
1901–05	937	53,5	816	46,5	1,753	17.3	550	300
1906–10	1,077	53,1	953	47,0	2,030	16.4	556	302
1911–15	1,170	52,5	1,059	47,5	2,229	14.2	499	280
1916–20	1,642	57,6	1,209	42,4	2,851	15.9	313	167
1921–25	1,092	51,4	1,035	48,7	2,126	10.8	188	103
1926–30	1,373	51,2	1,310	48,8	2,683	12.4	176	94
1931–35	1,367	49,8	1,377	50,2	2,744	11.2	147	81
1936–40	1,940	54,4	1,630	45,7	3,569	13.1	181	104
1941–45	2,703	58,6	1,908	41,4	4,610	15.5	339	185
1946–50	1,989	51,1	1,902	48,9	3,891	11.3	342	192
1951–55	1,829	48,5	1,941	51,5	3,770	9.7	150	88
1956–60	1,986	47,6	2,184	52,4	4,169	9.6	140	77
1961–65	2,210	46,6	2,533	53,4	4,743	9.8	163	93
1966–70	2,499	48,4	2,663	51,6	5,162	9.8	124	67
1971–75	2,546	49,0	2,653	51,0	5,198	10.2	71	43
1976–80	2,479	47,3	2,761	52,7	5,240	10.7	46	26
1981–85	2,387	45,6	2,852	54,4	5,238	10.8	38	23
1986–90	2,471	44,1	3,127	55,9	5,598	11.4	34	19
1991–95	2,312	43,5	2,999	56,5	5,311	10.5	33	19
1996–2000	2,272	43,7	2,926	56,3	5,197	9.6	28	15
2001–2005	2,262	44,7	2,798	55,3	5,060	9.0	19	8
2006–2010	2,293	46,2	2,667	53,8	4,959	8.6	15	8
2011–2015	2,316	45,9	2,726	54,1	5,042	8.3	15	8
2016–2020	2,429	47.0	2,739	53.0	5,168	8.0	11	7
Annually								
2015	2,356	45.9	2,779	54.1	5,135	8.2	10	5
2016	2,372	46.2	2,758	53.8	5,130	8.1	12	6
2017	2,380	47.2	2,662	52.8	5,042	7.9	8	7
2018	2,409	46.4	2,782	53.6	5,191	8.0	10	6
2019	2,415	47.2	2,703	52.8	5,118	7.9	9	6
2020	2,568	47.9	2,789	52.1	5,357	8.2	14	8
2021	2,622	47.3	2,926	52.7	5,548	8.4	9	4
2022	2,778	46.9	3,131	52.8	5,929	9.0	12	6
2023	2,727	47.5	3,013	52.5	5,740	8.6	10	3
2024	2,549	47.0	2,871	53.0	5,420	8.0	18	8

¹ 1950 or earlier including all those declared dead. ² Per 1.000 persons in the average population number. Source: Statistics Finland and for 1986–93 Helsinki's population data system.

2.11

Life expectancy (average expectation of remaining lifetime) 1991–2024

Age	1991–95			2001–05			2011–15			2024		
	Total	Men	Women	Total	Men	Women	Total	Men	Women	Total	Men	Women
0	75.8	71.5	79.3	78.2	74.4	81.3	80.7	77.5	83.3	82.4	79.9	84.5
10	66.3	62.0	69.8	68.6	64.8	71.7	70.9	67.7	73.6	72.7	70.1	74.9
20	56.5	52.2	59.9	58.7	55.0	61.8	61.0	57.8	63.7	62.8	60.2	64.9
30	46.9	42.9	50.2	49.0	45.4	52.0	51.3	48.2	53.9	52.9	50.5	55.0
40	37.6	33.8	40.6	39.5	36.1	42.2	41.6	38.7	44.1	43.2	40.7	45.2
50	28.8	25.4	31.4	30.5	27.3	33.0	32.3	29.5	34.5	33.8	31.6	35.7
60	20.6	17.7	22.5	22.2	19.4	24.1	23.7	21.3	25.5	24.8	22.8	26.3
70	13.5	11.3	14.5	14.7	12.5	15.9	16.0	14.1	17.2	16.6	15.0	17.8
80	7.8	6.7	8.1	8.4	7.1	8.9	9.1	8.0	9.7	9.6	8.5	10.3
85	5.6	5.0	5.8	6.0	5.0	6.3	6.4	5.6	6.7	6.9	6.1	7.3

Source: Statistics Finland and for 1986–93 Helsinki's population data system.

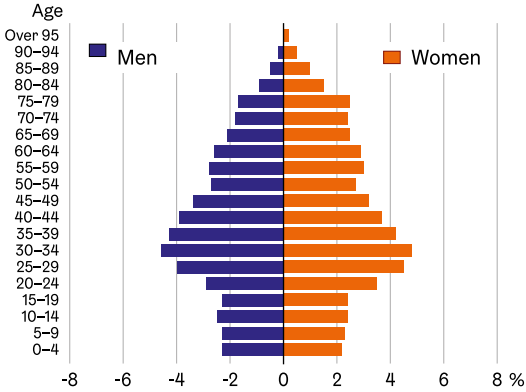
	1986–90	1991–95	1996–2000	2001–05	2006–10	2011–15	2016–20	2024
In-migrants¹	22,663	25,565	30,814	32,725	36,084	39,996	42,696	47,102
Helsinki Metropolitan Area	7,533	8,885	9,511	10,643	10,609	12,435	13,672	15,765
Rest of Uusimaa province	2,882	5,010	4,819	4,498	4,638	5,165	5,160	4,968
Rest of Finland	11,180	11,847	15,728	14,743	15,984	17,022	17,833	16,030
Abroad	2,035	3,626	3,329	4,292	6,380	7,005	7,324	10,339
Out-migrants¹	22,014	20,539	25,930	32,700	32,405	33,758	38,195	38,351
Helsinki Metropolitan Area	9,906	9,663	10,833	13,559	12,767	13,541	16,067	16,769
Rest of Uusimaa province	4,357	4,476	5,331	6,006	5,724	5,170	5,524	5,402
Rest of Finland	7,846	7,509	9,651	11,695	12,289	12,564	12,685	11,279
Abroad	1,307	1,411	2,635	3,117	3,306	3,989	5,113	4,901
Net migration¹	649	5,026	4,883	25	3,679	6,239	4,501	8,751
Helsinki Metropolitan Area	-2,373	-779	-1,321	-2,915	-2,158	-1,107	-2,395	-1,004
Rest of Uusimaa province	-1,474	535	-512	-1,507	-1,086	-5	-364	-434
Rest of Finland	3,334	4,338	6,077	3,049	3,695	4,458	5,148	4,751
Abroad	727	2,216	694	1,175	3,074	3,016	2,211	5,438

¹ Incl. area unknown.

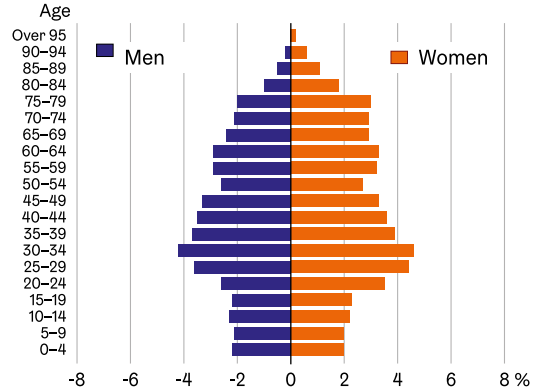
Source: Statistics Finland and for 1986–93 Helsinki's population data system.

Population by mother tongue and age Dec 31, 2024

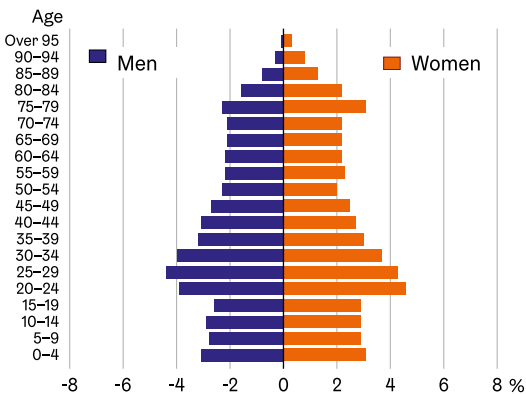
The whole population



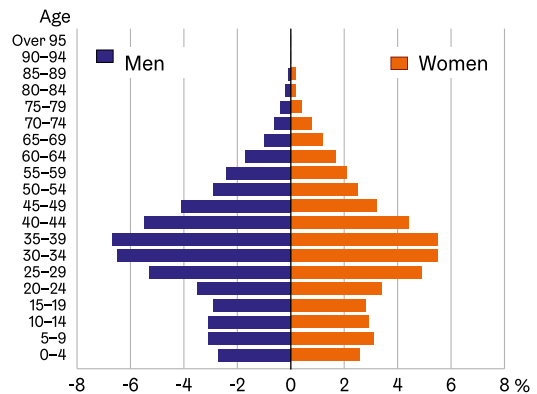
Finnish-speaking population¹



Swedish-speaking population



Population with a foreign mother tongue



¹ Incl. Sami-language residents.

Source: Statistics Finland.

Housing

List of diagrams and tables

3.1	Dwellings by type of building 1970–2024	22
3.2	Dwellings by tenure status: Helsinki 1950–2024. Helsinki Region, Tampere, Turku, Oulu and Finland 2024.....	23
3.3	Dwellings by size of dwelling (number of rooms) in 2000–2023	24
3.4	Housing standard by number of rooms 2000–2024.....	24
3.5	Indicators of level of housing in 2000–2024	25
3.6	Average rent of rented dwellings 2023 and 2024	25
3.7	Price index of dwellings in 2024	26
3.8	Completed dwellings in Helsinki by type of building in 1985–2024 ¹	27
3.9	Completed dwellings in Helsinki by type of dwelling in 2000–2024	28

3.1

Dwellings by type of building 1970–2024

	Dwellings total ¹	Type of house				
		Total	Small houses		Blocks of flats	Other buildings
			detached houses	terraced houses		
Helsinki						
1970	189,734	18,634	15,444	3,190	167,430	3,060
1980	221,341	22,540	14,621	7,919	194,547	4,254
1990	259,033	32,833	19,346	13,487	220,376	5,746
2000	296,013	37,664	21,472	16,192	253,315	5,034
2005	313,695	40,850	23,211	17,639	268,212	4,633
2015	350,314	46,137	26,837	19,300	299,895	4,282
2020	376,065	48,067	27,437	20,630	323,197	4,801
2021	382,153	48,376	27,631	20,745	328,961	4,816
2022	387,053	48,829	27,864	20,965	333,481	4,743
2023	394,373	48,925	27,879	21,046	340,980	4,468
2024	398,541	48,823	27,798	21,025	345,655	4,063
	%					
1970	100	9.8	8.1	1.7	88.2	1.6
1980	100	10.2	6.6	3.6	87.9	1.9
1990	100	12.7	7.5	5.2	85.1	2.2
2000	100	12.7	7.3	5.5	85.6	1.7
2005	100	13.0	7.4	5.6	85.5	1.5
2015	100	13.2	7.7	5.5	85.6	1.2
2020	100	12.8	7.3	5.5	85.9	1.3
2021	100	12.7	7.2	5.4	86.1	1.3
2022	100	12.6	7.2	5.4	86.2	1.2
2023	100	12.4	7.1	5.3	86.5	1.1
2024	100	12.3	7.0	5.3	86.7	1.0
2024						
Rest of Helsinki Metropolitan Area	100	33.7	22.1	11.6	65.7	0.6
Helsinki Region	100	28.6	19.1	9.5	70.5	0.9
Tampere	100	21.3	12.2	9.1	77.2	1.5
Turku	100	22.6	11.6	11.1	75.9	1.5
Oulu	100	42.5	28.0	14.6	56.1	1.4
Finland, total	100	49.9	36.8	13.1	48.4	1.7

¹ Including dwellings whose type of house is unknown.

Source: Censuses and Statistics Finland's Area Data Base.

3.2

Dwellings by tenure status: Helsinki 1950–2024. Helsinki Region, Tampere, Turku, Oulu and Finland 2024

	All dwellings	Owner occupied	Rented			Right-of-occupancy dwelling	Other or unknown tenure status
			Total	of which			
				arava social housing	other rented dwelling		
1950	105,883	25,748	79,744				391
1960	145,470	59,312	83,900				2,258
1970	189,734	81,618	102,079				6,037
1980	221,341	110,095	94,444				16,802
1990	259,033	141,785	98,670	42,803	55,867	..	22,893
2000	296,013	128,020	138,533	65,838	72,695	4,752	24,708
2005	313,695	141,165	141,277	69,855	71,422	6,300	24,953
2010 ¹	328,164	146,000	146,647	69,877	76,770	7,152	28,365
2015	350,314	148,302	162,215	69,794	92,421	9,000	30,797
2020	376,065	160,034	177,964	68,635	109,329	11,914	26,153
2022	387,053	159,649	184,827	65,227	119,600	12,472	30,105
2023	394,373	162,139	188,843	65,786	123,057	13,167	30,224
2024	398,541	163,370	190,632	65,088	125,544	13,368	31,171
	%						
1950	100	24.3	75.3				0.4
1960	100	40.8	57.7				1.6
1970	100	43.0	53.8				3.2
1980	100	49.7	42.7				7.6
1990	100	54.7	38.1	16.5	21.6	..	8.8
2000	100	43.2	46.8	22.2	24.6	1.6	8.3
2005	100	45.0	45.0	22.3	22.8	2.0	8.0
2010 ¹	100	44.5	44.7	21.3	23.4	2.2	8.6
2015	100	42.3	46.3	19.9	26.4	2.6	8.8
2020	100	42.6	47.3	18.3	29.1	3.2	7.0
2021	100	41.8	47.4	18.2	29.3	3.2	7.6
2022	100	41.3	47.8	16.9	30.9	3.2	7.8
2023	100	41.1	47.9	16.7	31.2	3.3	7.7
2024	100	41.0	47.8	16.3	31.5	3.4	7.8
2024							
Rest of Helsinki Metropolitan Area	100	47.8	41.6	13.3	28.3	4.1	6.6
Helsinki Region	100	47.2	41.9	13.9	28.0	3.6	7.4
Tampere	100	40.8	50.0	11.3	38.7	2.5	6.7
Turku	100	39.4	49.0	11.4	37.6	2.0	9.5
Oulu	100	49.7	41.4	11.1	30.2	1.5	7.4
Finland, total	100	53.9	33.4	9.9	23.5	1.7	11.0

¹ Since 2009 statistics on arava and interest-subsidised dwellings account for those dwellings released from tenant income restrictions.

² In 2010 Statistics Finland adjusted the tenure status of arava and interest-subsidised dwellings.

³ Dwellings built using the state's short-term interest subsidy have been classified as "other rented dwellings".

Source: Censuses and Statistics Finland's dwelling statistics.

3.3

Dwellings by size of dwelling (number of rooms) in 2000–2023

	All dwellings ¹	Number of rooms, excl. kitchen				
		1	2	3	4	5+
Helsinki						
2000	296,013	71,996	108,225	63,378	33,856	16,888
2005	313,695	74,262	114,330	67,671	36,798	18,558
2010	328,164	76,349	119,025	71,259	39,268	20,228
2015	350,314	80,348	127,182	77,020	42,411	21,694
2020	377 122	86,667	136,195	83,476	45,865	22,805
2022	387,053	90,068	139,134	86,358	47,504	23,354
2023	394,373	92,324	141,387	88,181	48,523	23,533
2000	100	24.3	36.6	21.4	11.4	5.7
2005	100	23.7	36.4	21.6	11.7	5.9
2010	100	23.3	36.3	21.7	12.0	6.2
2015	100	22.9	36.3	22.0	12.1	6.2
2020	100	23.0	36.1	22.1	12.2	6.0
2022	100	23.3	36.0	22.3	12.3	6.0
2023	100	23.4	35.9	22.4	12.3	6.0
2023						
Rest of Helsinki Metropolitan Area	100	15.1	31.0	24.8	17.3	11.7
Helsinki Region	100	18.4	32.4	23.2	15.5	10.4
Tampere	100	25.0	36.5	20.5	11.3	6.5
Turku	100	24.8	36.3	21.7	10.9	6.2
Oulu	100	17.5	31.7	21.5	15.2	14.1
Finland, total	100	16.0	30.0	22.1	17.7	14.0

¹Incl. dwellings whose number of rooms is unknown.

Source: Censuses and Statistics Finland's dwelling statistics.

3.4

Housing standard by number of rooms 2000–2024

	Dwelling house-holds total	Number of rooms, excl. kitchen						
		1	2	3	4	5	6	7+
Residents per dwelling								
2000	1.9	1.2	1.6	2.4	2.9	3.1	3.0	3.3
2005	1.9	1.2	1.5	2.3	2.9	3.0	3.0	3.3
2010	1.9	1.2	1.5	2.2	2.8	3.0	3.0	3.4
2015	1.9	1.2	1.5	2.3	2.8	3.0	3.0	3.1
2020	1.8	1.1	1.5	2.2	2.8	3.0	2.9	3.0
2022	1.8	1.1	1.5	2.2	2.8	3.0	2.9	2.9
2023	1.8	1.1	1.5	2.2	2.8	3.0	2.9	3.0
2024	1.8	1.1	1.5	2.3	2.8	3.0	2.9	2.9
Residents per 100 rooms								
2000	79	119	78	80	74	61	50	43
2005	76	115	75	76	72	61	49	43
2010	76	118	75	75	71	61	49	44
2015	76	118	77	76	71	60	49	45
2020	75	115	75	75	70	59	49	40
2022	74	114	74	74	70	59	48	39
2023	75	114	74	75	70	59	48	39
2024	75	114	74	75	70	59	48	39

Source: Censuses and Statistics Finland's statistics on dwelling stock.

3.5

Indicators of level of housing in 2000–2024

	2000	2005	2010	2015	2020	2023	2024
Dwelling stock	296,013	313,695	328,164	350,314	376,065	394,373	359,689
Dwelling population	531,287	540,094	566,040	603,965	637,971	654,854	663,626
Average size of dwellings							
Rooms per dwelling, kitchen incl.							
Floor area per dwelling, m ²	61.8	62.3	63.0	63.3	63.1	62.7	62.6
Housing density							
Floor area per household, m ²	62.3	63.0	63.7	63.6	63.6	63.4	63.3
Persons per room, kitchen excl.	0.79	0.76	0.75	0.76	0.76	0.74	0.75
Floor area per person, m ²	32.6	34.0	34.2	33.9	34.4	34.5	34.3
Persons per dwelling	1.91	1.85	1.86	1.88	1.85	1.84	1.84
Crowded housing							
Norm 4 ¹							
Dwelling households, % ²	12.4	9.8	10.3	10.8	9.9	9.5	9.8
Persons, % ³	23.3	19.2	19.8	20.9	19.4	19.6	20.1
Inhabitants in inadequately equipped dwellings							
Persons living in indadequately equipped dwellings	13,005	13,118	18,261	16,733	14,785	12,219	11,312
Percentage	2.4	2.4	3.2	2.8	2.3	1.9	1.7

¹ Norm 4: more than 1 person per room, when the kitchen is not reckoned as a room.

Source: Censuses. Statistics Finland's statistics on housing stock and housing conditions.

² Proportion of dwelling households.

³ Proportion of the population living in dwellings.

3.6

Average rent of rented dwellings 2023 and 2024

Euro/m ² /month	Helsinki		Espoo	Vantaa	Outer Helsinki Region	Tampere	Turku	Finland
	2023	2024	2024	2024	2024	2024	2024	2024
All dwellings	18.87	19.48	17.81	17.69	15.23	16.16	15.48	15.52
<i>Number of rooms</i>								
1	24.91	25.27	22.55	22.64	18.32	19.80	19.10	19.29
2	18.24	18.78	17.56	17.03	14.73	15.40	14.64	14.80
3+	16.07	16.76	16.02	15.88	13.98	13.78	12.82	13.92
Market-financed dwellings	22.05	22.29	19.47	18.96	15.88	16.84	16.39	16.72
<i>Number of rooms</i>								
1	27.07	27.27	23.99	23.98	19.28	20.67	19.76	20.71
2	20.73	20.94	18.85	18.07	15.17	15.77	15.21	15.67
3+	19.21	19.53	17.65	16.90	14.41	14.39	13.73	14.87
State-financed dwellings	13.77	14.62	14.60	14.48	13.86	13.57	12.64	13.03
<i>Number of rooms</i>								
1	16.35	17.30	17.67	16.86	15.39	15.39	15.23	14.63
2	14.00	14.79	14.80	14.47	13.89	13.75	12.85	12.92
3+	12.99	13.82	13.72	13.78	13.13	12.29	11.14	12.51
New rental contracts								
Market-financed dwellings	22.88	22.78	19.60	19.03	16.22	17.57	17.52	17.62
<i>Number of rooms</i>								
1	27.65	27.63	23.87	24.07	19.30	21.30	20.77	21.63
2	21.38	21.29	18.76	17.88	15.53	16.39	15.91	16.35
3+	19.96	19.89	17.67	16.63	14.80	15.17	14.70	15.65

Source: Statistics Finland's statistics on rents.

3.7

Price index of dwellings in 2024

Year, quarter	Helsinki	Espoo and Kauniainen	Vantaa	Outer Helsinki Region	Tampere	Turku	Finland
<i>2020=100</i>							
2024	92.7	97.2	89.0	92.4	97.4	99.2	94.4
2024							
I	93.1	96.7	89.2	90.6	97.7	98.9	94.3
II	93.5	97.3	88.1	94.7	98.8	98.8	95.1
III	92.2	97.6	89.9	92.1	97.1	99.6	94.6
IV	92.1	97.4	88.7	92.2	96.1	99.6	93.7

Source: Statistics Finland's statistics on rents.

3.8

Completed dwellings in Helsinki by type of building in 1985–2024¹

	Type of building						
	Total	Detached houses	Detached terraced houses	Blocks of flats	Others	State financed total	Built by the city, total
Dwellings							
<i>Annual average</i>							
1985–1989	4,211	656	612	2,913	29	1,695	1,328
1990–1994	3,974	391	272	3,285	27	2,793	1,633
1995–1999	3,457	290	194	2,961	12	2,685	1,150
2000–2004	3,822	369	343	3,091	18	1,783	1,012
2005–2009	2,513	286	154	2,041	33	636	478
2010–2014	3,671	279	170	3,206	16	1,382	705
2015–2019	4,583	285	228	4,024	46	1,409	926
2020–2024	6,229	270	180	5,740	108	1,686	1,244
<i>Annually</i>							
2000	4,853	365	440	4,048	0	2,656	1,182
2005	2,698	366	190	2,003	139	660	513
2010	2,289	278	134	1,876	1	574	306
2011	2,881	259	233	2,386	4	899	748
2012	2,451	295	150	1,988	18	432	418
2013	2,245	230	62	1,952	1	614	403
2014	3,679	334	254	3,075	16	1,371	1,000
2015	3,718	281	187	3,247	3	823	522
2016	3,985	256	232	3,326	171	954	482
2017	4,520	248	171	4,094	7	1,502	838
2018	4,538	290	290	3,928	30	1,739	1,453
2019	6,156	350	259	5,526	21	2,027	1,334
2020	6,899	356	218	6,313	12	1,630	1,466
2021	6,815	315	150	6,289	61	1,347	928
2023	7,838	225	172	7,577	204	2,503	2,301
2024	4,061	88	128	3,778	67	1,540	524
Housing, floor area, m²							
<i>Annual average</i>							
1985–1989	287,477	64,596	50,347	170,842	1,692	102,320	76,669
1990–1994	270,615	41,674	22,651	204,233	2,057	176,917	102,637
1995–1999	236,495	33,142	17,364	185,275	715	169,026	72,776
2000–2004	270,429	44,624	30,712	194,082	1,021	111,898	68,390
2005–2009	191,168	35,796	15,351	138,099	1,922	38,190	33,230
2010–2014	248,986	35,136	15,320	197,363	1,144	82,771	52,241
2015–2019	280,741	32,623	19,728	225,647	2,743	79,861	59,782
2020–2024	352,120	30,664	74,136	301,189	4,915	88,438	373,160
<i>Annually</i>							
2000	332,680	41,316	40,259	251,149	0	164,736	79,177
2005	200,208	46,791	17,784	127,767	7,866	34,585	32,905
2010	140,330	23,387	6,305	109,702	821	67,521	26,132
2015	243,619	33,179	16,721	193,375	344	49,985	32,684
2016	247,193	28,920	18,820	190,286	9167	54,931	35,613
2017	273,537	29,019	14,559	227,728	2231	85,069	57,485
2018	274,454	32,733	25,814	215,019	888	98,664	92,229
2019	364,900	39,265	22,724	301,826	1085	110,657	80,900
2020	400,176	40,254	18,228	338,124	3,570	91,682	90,943
2021	370,322	35,374	11,545	320,850	2,553	70,425	54,203
2022	308,215	41,375	18,004	240,605	8,231	69,289	61,399
2023	451,267	25,248	15,277	400,460	7,658	136,022	135,513
2024	230,621	11,071	11,082	205,906	2,562	74,772	31,102

¹New dwellings and extensions, not changes in the purpose of use.
Source: City of Helsinki Executive Office.

3.9

Completed dwellings in Helsinki by type of dwelling in 2000–2024

	Dwellings total	1 room	2 rooms	3 rooms	4 rooms	5 rooms	6 rooms	Average size, m ²
New dwellings and extensions to dwellings								
2000	4,853	629	1,875	1,170	856	280	43	68.2
2005	2,697	344	966	632	510	180	65	74.2
2006	2,289	367	832	492	406	141	51	71.4
2007	2,881	520	804	734	575	184	64	74.8
2008	2,451	202	842	712	502	129	64	81.0
2009	2,245	202	688	679	446	162	68	79.4
2010	2,059	411	747	500	246	122	33	68.2
2011	3,656	580	1,495	922	447	158	54	65.7
2012	4,643	885	1,796	1,183	540	165	74	65.0
2013	4,320	681	1,587	1,142	668	197	45	68.6
2014	3,679	592	1,129	1,014	672	224	48	72.5
2015	3,718	655	1,421	997	454	149	42	65.5
2016	3,985	833	1,360	987	615	152	38	62.0
2017	4,520	816	1,943	1,071	525	122	43	60.5
2018	4,538	1,015	1,569	1,064	634	227	29	60.5
2019	6,156	1,551	1,958	1,591	818	207	31	59.3
2020	6,899	1,813	2,211	1,654	919	254	48	58.0
2021	6,815	2,090	2,120	1,598	791	187	29	54.3
2022	5,534	1,677	1,571	1,264	786	208	28	55.7
2023	7,838	2,425	2,176	1,966	1,021	221	29	55.2
2024	3 967	1 175	1 235	889	517	124	27	56.8
Changed principal use								
2000	245	37	144	38	23	1	2	61.2
2005	156	67	57	13	7	9	3	59.8
2006	208	44	91	34	25	12	2	73.3
2007	427	128	169	81	36	9	4	68.4
2008	336	94	104	79	28	22	9	81.4
2009	267	82	68	60	33	14	10	87.9
2010	202	58	70	37	23	5	9	79.5
2011	426	114	195	78	29	5	5	62.0
2012	532	188	211	82	35	13	3	56.7
2013	236	72	108	33	14	4	5	60.4
2014	306	122	105	49	23	5	2	62.1
2015	341	120	130	54	18	17	2	64.0
2016	410	164	138	63	20	12	13	60.9
2017	370	188	114	43	18	2	5	53.6
2018	263	140	75	21	19	5	3	51.8
2019	580	285	184	74	19	13	5	52.4
2020	381	141	101	94	31	6	8	58.2
2021	290	80	132	47	15	2	14	75.6
2022	513	104	230	93	76	7	9	69.5
2023	341	98	148	54	32	5	4	..
2024	94	40	35	12	5	2	0	..

Source: City of Helsinki Executive Office.

Transport and Tourism

List of diagrams and tables

4.1	Public transport in Helsinki 2010–2024	30
4.2	Motor vehicles registered in Helsinki on Dec 31, 1995–2024.....	30
4.3	Road traffic accidents reported to the police: Helsinki 1995–2024, Espoo, Vantaa, Tampere, Turku, Oulu and Finland 2024.....	31
4.4	Hotels and overnight stays in Helsinki 2000–2024	31
4.5	Driving licences 1995–2024	32

4.1

Public transport in Helsinki 2010–2024

	2010	2015	2020	2022	2023	2024
Helsinki City Transport						
Trams	93	91	122	125	137	148
Metro coaches ¹	90	90	45	50	50	50
<i>Seat kilometres, 1,000</i>						
Trams	540,000	594,800	751,300	691,000	703,000	796,000
Metro	2,038,000	2,165,500	3,430,200	3,136,000	3,565,000	3,374,000
<i>Trips 1,000</i>						
Trams	54,496	55,230	34,900	41,800	44,200	49,300
Metro	57,091	62,128	60,400	69,900	79,000	74,700
<i>Trips on average per service day</i>						
Trams	151,378	153,417	95,616	114,520	121,095	135,068
Metro	158,586	172,578	165,479	191,596	216,438	204,658
Tendered bus services provided for Helsinki Regional Transport Authority HSL (Services within Helsinki)²						
Trips	86,200	84,987	45,400	53,183	62,713	67,097

1 The concept of "metro train unit" has changed with the introduction of new metro trains. The new trains form a single integrated space.

2 Buses in service on average during rush hour peak in December.

Source: Helsinki Regional Transport Authority HSL.

4.2

Motor vehicles registered in Helsinki on Dec 31, 1995–2024

	1995	2000	2005	2010	2015	2020	2022	2023	2024
Cars	157,544	186,452	204,589	232,515	253,528	276,910	285,052	287,646	291,162
of which in professional use	1,214	1,080	1,051	1,167	1,105	1,926	2,113	2,272	2,451
Lorries/trucks	3,429	5,100	5,893	7,380	9,350	10,177	10,430	10,837	11,045
Vans	14,974	16,957	19,557	24,303	30,915	35,855	37,210	37,909	37,556
Buses	930	1,626	1,458	1,583	1,650	2,140	2,531	2,544	2,675
Special cars	1,388	998	643	510	484	465	462	455	458
Vehicles total	178,265	211,133	232,140	266,291	295,927	325,547	335,685	341,663	342,896
per 1,000 inhabitants	340	380	414	452	471	498	510	515	508
of which									
cars	300	336	365	395	404	404	433	433	431
Motor cycles	5,534	7,650	11,224	15,216	16,994	18,359	18,909	19,029	19,477
Motor vehicles total	183,799	218,783	243,364	281,507	312,921	434,906	354,954	361,640	362,373

Source: Statistics Finland.

4.3

Road traffic accidents reported to the police: Helsinki 1995–2024, Espoo, Vantaa, Tampere, Turku, Oulu and Finland 2024

	Accidents leading to casualties		Victims			
	Total	Per 1,000 inhabitants	Killed	Injured	Total	Per 1,000 inhabitants
Helsinki						
1995	812	1.5	7	987	994	1.9
2000	703	1.3	16	867	883	1.5
2005	552	1.0	9	721	730	1.3
2010	545	0.9	5	669	674	1.1
2015	383	0.6	12	443	455	0.7
2020	202	0	8	352	360	1
2022	242	0	5	295	300	1
2023	277	0	6	327	333	1
2024	300	0	4	352	356	1
Espoo	89	0	1	109	110	0
Vantaa	90	0	4	111	115	0
Tampere	74	0	4	82	86	0
Turku	92	0	3	109	112	1
Oulu	65	0	3	72	75	0
Finland overall	2,789	0	180	3,444	3,624	1

Source: Liikenneturva. Statistics Finland. Transport and tourism. Road traffic accidents.

4.4

Hotels and overnight stays in Helsinki 2000–2024

	2000	2010	2015	2020	2024
Accommodation establishments on Jan 1	60	63	60	76	89
of which hotels	47	55	54	67	79
Rooms	7,577	8,843	9,292	12,150	14,268
Beds	14,580	17,605	17,993	24,128	28,532
Helsinki's proportion of the capacity of all Finnish accommodation establishments, %	10	11	11	14	15
of the hotel capacity, % ¹	12	14	15	18	15
Clients	1,430,256	1,821,799	2,065,596	916,901	2,646,651
Rooms	7,262	8,650	9,192	11,722	13,969
Beds	13,758	16,922	17,492	22,766	27,552
Utilisation rate					
percentage of room capacity	68	67	70	35	59
Overnight stays, total	2,604,647	3,187,136	3,461,958	1,616,635	2,237,455
of which					
foreign nationals, %	58.0	53.6	53.2	30.6	48.3

¹ Number of beds.

Source: Statistics Finland.

4.5

Driving licences 1995–2024

	1995	2000	2005	2010	2015	2020	2024
Valid driving licences, total	288,703	321,597	335,758	358,572	373,505	390,882	395,523
Men	156,773	172,287	178,100	188,214	194,685	202,804	205,062
Women	131,930	149,310	157,658	170,358	178,820	188,078	190,461
% of Finnish driving licenses	9.8	10.2	10.4	10.0	10.1	10.4	10.4

Source: Traficom.

Health care

List of diagrams and tables

5.1	Non-hospital health care services provided by Helsinki City (including outsourced services) 2010–2024	34
5.2	Helsinki residents having received reimbursements of the fees charged by doctors practising privately 2024.....	35
5.3	Use of private-sector health care services reimbursed by the National Health Insurance 2010–2024	35
5.4	National disability pensions by main group of disease Dec 31, 2024	36
5.5	Deaths by cause of death ¹ (54-class) in 2024.....	37

	2010	2015	2020	2023	2024
Helsinki residents having received outpatient health care					
Total	436,492	456,991	512,508
Primary health care	405,930	423,524	474,335	478,079	482,190
Outpatient medical care	293,590	299,342	374,550	356,246	339,175
Public health centre emergency clinics	76,530	74,742	0	60,736	58,195
Maternity and child health clinics	51,929	64,569	69,509	57,120	63,856
Home care	17,043	17,865	15,692	13,405	15,282
Oral health	154,534	179,956	140,287	168,276	192,770
Other primary health care	92,897	117,164	158,978	115,743	123,229
Specialised medical care	184,130	205,968	257,200	232,317	250,826
Specialised somatic medical care	173,251	190,775	239,122	203,667	220,122
Specialised psychiatric medical care	20,420	28,762	36,771	34,390	36,595
Helsinki residents' outpatient consultations and treatment visits					
Total	5,099,551	6,902,146	7,479,807	7,903,645	8,498,057
Primary health care	4,245,486	5,780,001	6,150,493	6,715,100	7,268,512
Outpatient medical care	1,146,772	1,501,233	1,812,706	2,182,909	2,263,789
Public health centre emergency clinics	119,481	124,671	0	82,126	77,470
Maternity and child health clinics	230,589	328,996	348,819	313,550	343,537
Home care	2,042,287	2,846,122	3,131,335	3,677,422	3,673,530
Oral health	448,828	513,162	333,497	458,961	469,715
Other primary health care	257,529	466,123	524,136	132	440,471
Specialised medical care	854,065	1,122,145	1,329,314	1,188,545	1,229,545
Specialised somatic medical care	625,180	781,047	920,977	841,340	859,243
Specialised psychiatric medical care	228,885	341,098	408,337	347,205	370,302
Non-resident outpatient consultations and treatment visits in Helsinki					
Total	54,546	79,791	88,408	127,856	75,927
Primary health care	51,170	73,117	78,168	100,753	48,688
Outpatient medical care	7,383	14,521	31,990	47,596	977
Public health centre emergency clinics	7,372	9,511	0	333	191
Maternity and child health clinics	1,220	3,980	5,959	30,860	6 209
Home care	1,075	1,634	1,691	8,628	7,356
Oral health	12,523	17,267	10,125	11,646	10,956
Other primary health care	21,597	26,209	28,403	1,690	31,668
Specialised medical care	3,376	6,674	10,240	27,103	27,239
Specialised somatic medical care	1,747	3,152	3,574	5,615	3,449
Specialised psychiatric medical care	1,629	3,522	6,666	21,488	23,790

Source: Social Services and Health Care Sector.

5.2

Helsinki residents having received reimbursements of the fees charged by doctors practising privately 2024

Age	Private GPs or specialists		Private dental care	
	Persons	% of the population	Persons	% of the population
0–14	29,743	31.0	1,475	1.5
15–24	19,932	26.1	3,314	4.3
25–44	49,934	21.3	29,856	12.8
45–64	46,154	28.8	42,988	26.8
65–	53,586	45.5	49,351	40.9
Total	199,349	29.0	126,984	18.5

Source: Kela – The Social Insurance Institution of Finland. Kelasto reports.

5.3

Use of private-sector health care services reimbursed by the National Health Insurance 2010–2024

	2010	2015	2020	2023	2024
Population ¹	588,549	628,208	656,920	664,028	674,500
Doctors' fees					
Number of visits, 1,000	557	543	466	525	528
Reimbursements, 1,000 euro ²	20,879	16,097	10,221	5,102	13,651
per inhabitant, euro ²	35.48	25.62	15.56	7.82	20.25
per visit, euro ²	37.48	29.64	21.93	9.72	25.85
Dentists' fees					
Number of visits, 1,000	357	337	285	287	277
Reimbursements, 1,000 euro ²	33,678	18,165	7,976	6,191	6,772
per inhabitant, euro ²	57.22	28.92	12.14	9.32	10.05
per visit, euro ²	94.46	53.90	27.97	21.57	24.44
Examination and treatment					
Decuctible visits, 1,000	240	443	364	116	81
Reimbursements, 1,000 euro ²	21,172	14,762	8,216	1,492	604
per inhabitant, euro ²	35.97	23.50	12.51	2.25	0.89
per visit, euro ²	88.22	33.32	22.57	12.86	7.46
Travel					
Single journeys, 1,000	329	347	245	243	277
Reimbursements, 1,000 euro ²	26,978	24,361	17,272	14,068	15,371
per inhabitant, euro ²	45.84	38.78	26.29	21.19	22.80
per visit, euro ²	82.00	70.20	70.50	57.89	55.49

¹ Population at year-end from Kela – the Social Insurance Institution of Finland's database.

² Based on rates in 2023.

Source: Kela – The Social Insurance Institution of Finland.

5.4

National disability pensions by main group of disease
Dec 31, 2024

		Helsinki		Finland	
		<i>All disability pensions</i>		<i>All disability pensions</i>	
		<i>Number</i>	<i>%</i>	<i>Number</i>	<i>%</i>
Main disease groups altogether		14,627	100	175,669	100
I	Infectious or parasitic diseases	46	0.3	239	0.1
II	Tumours	423	2.9	4,785	2.7
IV	Diseases of internal secretion, nutrition or metabolism	172	1.2	2,087	1.2
V	Disorders of mental health and behavior	9,195	62.9	97,944	55.8
VI	Diseases of the nervous system	1,242	8.5	15,465	8.8
VII	Diseases of the eye and its surrounding structures	187	1.3	1,790	1.0
IX	Diseases of the cardio-vascular system	670	4.6	7,997	4.6
X	Diseases of the respiratory system	77	0.5	1,249	0.7
XI	Diseases of the gastro-intestinal system	68	0.5	959	0.5
XIII	Diseases of the musculo-skeletal and articular systems	1,454	9.9	29,484	16.8
XVII	Congenital malformations, chromosome abnormalities, etc.	383	2.6	4,672	2.7
XIX	Injuries, poisonings or consequences of certain other external impacts	537	3.7	6,683	3.8
	Others	173	1.2	2,315	1.3

Source: Joint statistics of Kela – The Social Insurance Institution of Finland – and the Finnish Centre for Pensions.

5.5

Deaths by cause of death¹ (54-class) in 2024

	Persons deceased		Per 10,000 inhabitants	
	Total	Men %	Total	
			Helsinki	Finland
Total	5,412	47.1	79.7	103.6
Infectious or parasitic diseases	69	49.3	1.0	1.5
Tumours	1,245	48.2	18.3	24.4
Diseases of internal secretion, nutrition or metabolism	69	43.5	1.0	1.7
Dementia, Alzheimer's disease	1,106	31.7	16.3	21.2
Other diseases of the nervous and sensory system	234	47.9	3.4	4.0
Diseases of the cardio-vascular system ²	1,470	51.2	21.6	32.7
Diseases of the respiratory system	230	53.0	3.4	3.6
Diseases of the gastro-intestinal system ²	107	53.3	1.6	2.4
Urological and venereal diseases	15	46.7	0.2	0.3
Congenital malformations, chromosome abnormalities	27	51.9	0.4	0.4
Other diseases ²	97	40.2	1.4	1.4
Unknown or ill-defined causes of death	69	63.8	1.0	0.6
Alcohol-related diseases and accidental alcohol poisoning	197	67.0	2.9	2.8
Accidents and violence ²	280	63.9	4.1	5.6
No death certificate	197	38.6	2.9	0.9

¹ ICD-10 classification of causes of death.

² Except alcohol-related.

Source: Statistics Finland.

Social welfare

List of diagrams and tables

6.1	Child welfare 1995–2024.....	39
6.2	Benefits for families with children 2005–2024.....	39
6.3	Pensioners in the Helsinki Region, Tampere, Turku, Oulu and Finland 2024.....	40
6.4	Recipients of pensions in Helsinki on Dec 31, 2000–2024.....	40

6.1

Child welfare 1995–2024

	1995	2000	2005	2010	2015	2020	2024
Child welfare clients during the year	5,577	7,278	7,734	10,022	19 125	6,601	..
of whom							
Receiving community care	4,578	6,276	6,969	9,356	18 085	5,574	3,751
Placements	1,917	2,326	2,431	2,474	2,084	2,106	1,869
Placed with an emergency care order and taken into care	1,296	1,603	1,909	1,923	1,777	1,775	1,887
of whom placed with an emergency care order	179	222	329	435	432	599	619
In residential care	..	1,337	1,478	1,511	972	1,031	917
In foster care	..	1,041	999	1,101	1,052	1,096	..
In professional family homes	..	116	87	117	159	193	108
Children aged 0–17 in child welfare services, as % of total population of same age	5.1	6.4	6.9	8.3	17.5	5.1	..
Receiving community care	4.1	5.5	6.1	8.3	16.5	4.2	3.3
Placed	1.8	2.1	2.2	2.2	1.8	1.7	1.5
Placed with an emergency care order and taken into care	1.3	1.5	1.8	1.8	1.5	1.5	1.5
Young people aged 18–20 in child welfare services, as % of total population of same age	3.8	5.0	5.8	6.2	7.0	3.7	..
Receiving community care	3.5	4.2	5.5	6.2	7.0	2.5	..
Placed	1.1	1.4	1.6	1.6	1.4	0.9	..
Placed with an emergency care order and taken into care	0.5	0.8	1.0	0.8	1.0	0.6	..

¹Since a new social care act came into effect on 1 April 2015, child protection clients have decreased.
Source: Social Services and Health Care Division.

6.2

Benefits for families with children 2005–2024

	2005	2010	2015	2020	2024
Child benefits					
Families receiving child benefits	52,950	56,955	60,834	64,320	67,030
<i>Number of children in family</i>					
1	26,831	29,250	30,691	31,134	32,996
2	19,185	20,421	22,341	24,838	25,721
3	5,391	5,574	5,910	6,250	6,164
4	1,046	1,094	1,280	1,471	1,515
5–	497	616	612	624	529
Children conferring entitlement to child benefit¹	88,362	94,167	101,104	108,355	111,947
Child benefits paid €1,000	123,401	1,174	² 129 919	143,160	155,773
Recipients (families) of maternity grants	5,879	6,726	6,990	6,935	6,186
Total value of maternity grants, 1,000 euro ³	1,664	1,514	1,516	1,800	1,303
of which value of maternity pack	773	853	925	1,099	931

¹ Including children in institutions.

² Due to a change in the legislation on child benefit, the amount of the benefit decreased by 8.1% as of January 2015.

³ Nominal value.

Source: Kela – The Social Insurance Institution of Finland. Kelasto reports.

6.3

Pensioners in the Helsinki Region, Tampere, Turku, Oulu and Finland 2024

	All pension recipients	Old-age pension	Disability pension	Survivors' pension
<i>Total</i>				
Helsinki Metropolitan area	246,566	221,586	25,602	30,355
Rest of Helsinki Region	82,596	74,186	8,615	11,000
Helsinki Region	329,162	295,772	34,217	41,355
Tampere	59,123	51,783	7,528	7,673
Turku	49,817	43,893	6,084	6,709
Oulu	48,184	40,840	7,540	6,164
Finland, total	1,628,391	1,456,307	177,331	227,717

Source: Finnish Centre for Pensions

6.4

Recipients of pensions in Helsinki on Dec 31, 2000–2024

	2000	2005	2010	2015	2020	2024
Recipients of pensions in their own right	108,311	111,622	120,447	128,302	138,854	142,892
of which						
Recipients on statutory earnings-related pension	99,842	105,303	114,034	121,207	130,962	132,163
Recipients of national pension ¹	88,415	52,713	38,148	36,389	37,793	33,996
Old-age pension	80,210	82,676	95,301	109,457	117,680	125,821
Disability pension	22,375	21,897	21,355	18,269	10,606	14,627
Unemployment pension	3,977	3,634	1,907	–	–	–
Part-time pension	3,231	4,039	2,940	1,223	63	–
Percentage of residents having received pensions in their own right						
All recipients, aged 16 or older	23.2	23.5	23.9	24.0	24.3	24.9
Aged 55–64, including part-time pensions	42.1	36.6	34.2	25.0	24.0	20.7
Aged 55–64, without part-time pensions	36.6	31.0	30.4	23.5	24.0	12.0
Recipients of old-age pensions, % of aged 16 or older	17.2	17.4	18.9	20.5	21.5	22.0
Recipients of disability pensions, % of aged 16–64	5.7	5.5	5.1	4.2	3.6	2.6
Average pension in one's own right 31.12. euros/month	1,225	1,454	1,704	2,008	2,060	2,501
Other, national old agedisability and unemployment pension benefits						
Child increase	–	–	877	874	715	652
Front-veteran's supplement	–	–	4,834	2,045	583	149
Recipients of survivors' pensions						
Surviving spouses	22,225	21,720	20,631	19,234	15,834	14,977
Children	2,622	2,409	2,186	1,811	1,374	1,555

¹ With effect from 1 January 2001. the cut national pensions and spouses supplement were discontinued.

Source: Finnish Centre for Pensions and The Social Insurance Institution of Finland. Statistical Yearbook of Pensioners in Finland.

Education

List of diagrams and tables

7.1	Children receiving early childhood education and care on Dec 31, 2000–2024	42
7.2	Comprehensive schools and general upper secondary schools 2015–2024	43
7.3	Students and degrees at polytechnics in Helsinki Metropolitan Area 2024	43
7.4	Students and degrees at universities in Helsinki Metropolitan Area in 2024	44
7.5	Numbers of students at various levels of education in Helsinki 2000–2024	44
7.6	Population 15 years of age and over by educational level and age 2000–2024	45

	2000	2005	2010	2015	2020	2024
Day care in municipal day-care centres						
Municipal day-care centres	336	282	286	323	341	338
Children in day care, total Dec 31	19,061	16,651	19,289	23,373	26,599	27,094
Children aged under 3	2,994	2,977	3,820	4,529	5,316	6,403
Children aged 3–6	15,376	13,607	15,431	18,791	21,218	20,648
Children aged 7	691	67	38	53	65	43
as % of total population of same age						
% of 1–2 year-olds	26.0	27.0	31.3	33.7	43.5	54
% of 3–6 year-olds	67.3	67.9	72.4	75.0	81.6	83
Day care in municipal family day care						
Children in day care, total Dec 31	2,207	1,775	1,415	1,138	628	364
Children aged under 3	877	770	632	517	304	183
Children aged 3–6	1,214	947	761	618	319	181
Children aged 7	116	58	22	3	0	0
as % of total population of same age						
% of 1–2 year-olds	7.5	6.9	5.1	3.8	2.5	1.5
% of 3–6 year-olds	5.3	4.7	3.6	2.5	1.2	0.7
Private early childhood education and care with contract of purchase						
Private day-care centres with contract of purchase	52	42	39	10	-	
Children from Helsinki in care	1,348	1,117	1,007	308	205	165
as % of children aged 1–6	3.9	3.6	3.0	0.8	0.5	0.4
Private early childhood education and care¹						
Private day-care centres	116	100	109	118	122	101
Places in private day-care centres	3,120	2,768	2,926	2,998	-	-

¹ Including private day-care centres with contract of purchase.

Source: Education Division.

7.2

Comprehensive schools and general upper secondary schools 2015–2024

	2015	2020	2022	2023	2024
All schools in Helsinki	178	145	137	137	138
City-owned schools	129	117	117	117	118
of which					
City's Finnish-language schools	110	100	100	100	101
Comprehensive schools	98	88	88	88	88
Upper secondary general schools	11	11	11	11	12
Upper secondary general schools for adults	1	1	1	1	1
City's Swedish-language schools	19	17	17	17	17
Comprehensive schools	16	14	14	14	14
Upper secondary general schools	3	3	3	3	3
State schools	11	6	6	6	6
Comprehensive schools and upper secondary general schools	11	6	6	6	6
Private schools	12	8	12	12	12
Comprehensive schools and upper secondary general schools	10	6	12	12	12
Upper secondary general schools for adults	2	2	2	2	2

Source: Education Division.

7.3

Students and degrees at polytechnics in Helsinki Metropolitan Area 2024

	Students		Degrees	
	<i>New</i>	<i>All</i>	<i>Polytechnic bachelor's degree</i>	<i>Higher polytechnic degree</i>
Arcada University of Applied Sciences (primarily Swedish-speaking)	822	2,705	562	84
Diaconia University of Applied Sciences (Diak)	1,060	3,389	859	82
Haaga-Helia University of Applied Sciences	3,268	10,233	2,237	392
Humak University of Applied Sciences	885	2,646	455	105
Laurea University of Applied Sciences	3,689	10,826	2,390	443
Metropolia University of Applied Sciences	5,503	18,149	3,429	610

Source: Statistics Finland.

7.4

Students and degrees at universities in Helsinki Metropolitan Area in 2024

	Students		Degrees	
	<i>New</i>	<i>All</i>	<i>Lower and higher university level¹</i>	<i>Doctorate level</i>
University of Helsinki	5,902	32,006	5,794	459
Aalto University	3,762	20,975	3,988	283
Hanken School of Economics	637	2,815	640	10
University of the Arts ²	361	1,927	529	19
National Defence University	329	1,104	300	0

¹ Also including physicians' specialisation diplomas.

² The Theatre Academy, Academy of Fine Arts and Sibelius Academy merged into the University of the Arts in 2013.

Source: Statistics Finland.

7.5

Numbers of students at various levels of education in Helsinki 2000–2024

	Comprehensive school education	General upper secondary school	Vocational education	Polytechnic education	University education
2000	49,591	17,411	16,492	16,889	45,439
2005	49,485	16,408	30,406	19,573	47,449
2010	46,322	16,838	32,614	21,384	45,900
2015	48,719	15,867	43,370	22,665	42,250
2016	49,779	15,788	44,003	23,093	41,962
2017	51,199	15,909	43,164	23,952	41,240
2018	52,946	15,893	42,633	21,783	39,747
2019	55,833	16,684	45,186	21,976	38,224
2020	55,688	17,094	40,108	23,024	38,190
2021	55,770	17,281	42,111	23,435	35,928
2022	55,579	18,177	44,509	24,955	36,507
2023	59,581	18,177	44,509	24,955	36,507
2024	61,008	18,661	47,520	25,684	37,075

Source: Statistics Finland.

7.6

Population 15 years of age and over by educational level and age 2000–2024

Year	Total	of whom women	Age				
			15–24	25–34	35–44	45–64	65–
Population aged 15 or older							
2000	471,692	257,019	71,689	99,083	86,249	140,105	74,566
2005	480,875	259,982	72,357	96,816	85,374	148,466	77,862
2010	508,847	273,096	76,907	108,354	80,356	155,164	88,066
2015	540,300	288,195	75,722	118,848	88,456	153,210	104,064
2020	562,804	298,761	70,170	123,679	101,962	152,687	114,306
2023	579,305	306,005	74,335	122,415	107,079	156,837	118,639
2024	588,243	310,413	76,305	122,416	109,918	159,129	120,475
Population with educational qualification (ISCED 3 or more)							
2000	311,475	168,382	40,012	81,784	68,463	91,484	29,732
2005	329,298	178,804	38,280	80,685	68,768	106,473	35,092
2010	360,129	195,907	40,521	89,104	64,888	118,939	46,677
2015	397,018	215,950	41,965	96,801	72,084	122,457	63,711
2020	433,274	235,491	37,696	104,092	85,769	127,303	78,414
2023	445,045	241,952	37,748	101,208	88,205	131,926	85,958
2024	450,876	245,233	38,117	100,247	89,802	133,963	88,747
Secondary (ISCED 3–4), total							
2000	156,561	81,667	36,574	38,849	29,947	38,531	12,660
2005	163,623	84,677	36,384	39,558	28,940	44,262	14,479
2010	169,328	86,309	37,293	39,624	24,834	49,386	18,191
2015	177,938	89,594	37,855	41,035	25,482	49,430	24,136
2020	179,370	89,569	32,922	41,452	28,158	47,806	29,032
2023	178,725	88,890	32,430	39,023	28,393	47,650	31,229
2024	179,145	88,815	32,423	38,075	28,812	47,835	32,000
of which							
Upper secondary general education							
2000	67,922	36,446	28,339	18,763	8,831	8,896	3,093
2005	71,695	37,862	28,093	20,833	8,815	10,725	3,229
2010	70,449	36,099	27,838	18,707	7,920	11,944	4,040
2015	66,846	33,472	25,510	16,299	8,091	11,529	5,417
2020	64,080	31,887	23,667	14,102	7,905	11,576	6,830
2023	64,126	32,116	24,282	13,875	6,952	11,623	7,394
2024
Secondary vocational education							
2000	88,639	45,221	8,235	20,086	21,116	29,635	9,567
2005	91,928	46,815	8,291	18,725	20,125	33,537	11,250
2010	98,879	50,210	9,455	20,917	16,914	37,442	14,151
2015	111,092	56,122	12,345	24,736	17,391	37,901	18,719
2020	115,290	57,682	9,255	27,350	20,253	36,230	22,202
2023	110,309	54,885	8,136	24,667	20,317	33,735	23,454
2024
Tertiary education (ISCED 5–6), total							
2000	154,914	86,715	3,438	42,935	38,516	52,953	17,072
2005	165,675	94,127	1,896	41,127	39,828	62,211	20,613
2010	190,801	109,598	3,228	49,480	40,054	69,553	28,486
2015	219,080	126,356	4,110	55,766	46,602	73,027	39,575
2020	253,904	145,922	4,774	62,640	57,611	79,497	49,382
2023	266,320	153,062	5,318	62,185	59,812	84,276	54,729
2024	271,731	156,418	5,694	62,172	60,990	86,128	56,747

7.6

Population 15 years of age and over by educational level and age 2000–2024 (continues)

Year	Total	of whom women	Age				
			15–24	25–34	35–44	45–64	65–
of which							
Lowest-level tertiary education (ISCED 5B)							
2000	61,745	39,099	1,728	17,014	16,577	19,790	6,636
2005	53,406	34,037	32	6,453	15,387	23,527	8,007
2010	47,708	30,426	28	1,225	9,971	25,813	10,671
2015	44,023	28,289	20	246	4,356	25,052	14,349
2020	40,651	26,247	4	209	1,114	22,094	17,230
2023	38,133	24,741	13	180	402	18,702	18,836
2024	37,363	24,302	8	162	358	17,347	19,488
Lower degree (ISCED 5A)							
2000	31,864	17,590	1,300	8,090	5,621	12,632	4,221
2005	42,355	24,422	1,539	16,371	6,342	13,106	4,997
2010	57,985	34,304	2,999	25,202	9,442	13,562	6,780
2015	72,838	42,676	3,874	29,827	16,183	13,611	9,343
2020	87,418	50,428	4,506	32,878	22,235	16,359	11,440
2023	92,026	52,741	4,986	32,012	23,272	19,592	12,164
2024	93,812	53,719	5,317	31,489	23,787	20,826	12,393
Higher degree (ISCED 5A)							
2000	54,820	27,755	408	17,013	14,608	17,380	5,411
2005	62,239	32,720	325	17,614	16,139	21,728	6,433
2010	75,845	40,947	200	22,250	18,479	25,758	9,158
2015	91,220	50,503	216	24,935	23,434	29,468	13,167
2020	112,433	62,981	264	28,764	30,915	35,398	17,092
2023	121,801	68,761	318	29,221	32,907	39,711	19,644
2024	125,937	71,384	369	29,769	33,676	41,533	20,590
Doctorate level (ISCED 6)							
2000	6,485	2,271	2	818	1,710	3,151	804
2005	7,675	2,948	0	689	1,960	3,850	1,176
2010	9,263	3,921	1	803	2,162	4,420	1,877
2015	10,999	4,888	0	758	2,629	4,896	2,716
2020	13,402	6,266	0	789	3,347	5,646	3,620
2023	14,360	6,819	1	772	3,231	6,271	4,085
2024	14,619	7,013	0	752	3,169	6,422	4,276
Basic education only (ISCED 1–2) or education unknown							
2000	160,217	88,637	31,677	17,299	17,786	48,621	44,834
2005	151,577	81,178	34,077	16,131	16,606	41,993	42,770
2010	148,718	77,189	36,386	19,250	15,468	36,225	41,389
2015	143,282	72,245	33,757	22,047	16,372	30,753	40,353
2020	129,530	63,270	32,474	19,587	16,193	25,384	35,892
2023	134,260	64,053	36,587	21,207	18,874	24,911	32,681
2024	137,367	65,180	38,188	22,169	20,116	25,166	31,728

Source: Statistics Finland.

Culture and leisure

List of diagrams and tables

8.1	Number of visitors at prominent tourist attractions in Helsinki in 2000–2024	48
8.2	Helsinki City library statistics 2000–2024.....	49
8.3	Sports and recreation 2000–2024	50



8.1

Number of visitors at prominent tourist attractions
in Helsinki in 2000–2024

	2000	2005	2010	2015	2020	2024
<i>Tourist attraction</i>						
Linnanmäki Amusement Park	1,055,532	1,197,768	1,055,000	1,000,000	700,000	1,000,000
Suomenlinna sea fortress	671,805	632,000	736,000	931,000	450,000	991,000
Korkeasaari Zoo	557,697	483,202	436,135	523,602	353,194	490,460
Temppeliaukio Church	495,120	568,440	508,393	500,000	92,145	545,912
Uspensky Cathedral	450,400	500,500	500,000	400,000	50,000	350,000
Helsinki Cathedral and Crypt	312,421	399,278	452,300	500,000	50,000	350,000
Helsinki Festival	321,872	254,454	271,896	295,970	37,000	228,292
University of Helsinki Botanical Garden	58,226	74,172	28,400	38,713	115,000	60,000
Seurasaari Open-Air Museum	51,683	40,385	30,606	41,031	11,473	51,379

Source: The statistics of each separate tourist attraction.

8.2

Helsinki City library statistics 2000–2024

	2000	2010	2015	2020	2023	2024
Libraries	37	37	36	37	37	38
Mobile libraries (buses)	2	2	2	2	2	2
Libraries in hospitals etc.	17	10	10	6	7	7
Books (incl. music) on Dec 31	1,806,255	1,612,439	1,562,299	1,566,144	1,579,322	1,581,390
in Finnish	1,389,859	1,236,731	1,203,615	1,214,143	1,184,881	1,179,974
in Swedish	191,128	145,729	129,525	132,695	145,165	146,007
in other languages	188,158	199,020	203,166	219,306	249,276	255,409
music scores	37,110	30,959	25,993	28,650	28,556	27,308
Sound recordings	161,141	225,654	200,480	113,176	173,171	88,124
Image recordings	29,404	42,487	55,105	49,509	38,327	36,074
Others	33,582	15,741	16,826	23,955	23,439	25,357
Newspaper and periodical subscriptions	5,949	5,005	4,715	3,402	2,711	2,633
Borrowers	243,819	211,309	235,051	239,185	246,970	253,247
per 1,000 inhabitants	443	359	374	366	372	376
Home service clients	302	464	410	412	399	368
Number of visits at the library	7,160,113	6,449,357	6,133,185	5,197,400	8,156,248	8,944,103
Virtual visits	1,396,804	6,803,235	12,460,193	15,915,048	6,943,703	8,696,694
Hours open	96,911	94,304	103,912	85,671	115,783	121,903
Total, loans	9,150,598	9,179,672	8,827,319	7,281,878	9,214,046	9,556,721
per 1,000 inhabitants	16.6	15.6	14.1	14	13.8	14.2
per 1,000 borrowers	37.7	43.4	37.6	37.5	37.2	37.7
Number of times the E-material was used	–	–	412,702	1,325,620	1,957,855	1,854,711
Mobile libraries	237,233	239,871	192,092	113,836	205,544	217,697
Percentages of loans						
Books (incl. music)	73.9	70.4	77.3	84.5	88.3	89.0
Music sheets and scores	1.3	1.4	1.3	1.2	1.2	1.0
Sound recordings	14.7	15.0	9.7	4.6	3.0	2.5
Image recordings	6.7	10.4	8.2	5.4	3.1	2.9
Others	4.7	4.2	4.9	4.1	4.5	4.5
Non-fiction books	39.3	37.3	37.5	28.8	28.5	27.6
Fiction books	60.7	62.7	62.5	55.8	71.5	61.4
Books for adults	71.5	69.6	65.6	60	61.1	54.8
Books for children	28.5	30.4	34.4	40	38.9	45.1
Books in Finnish	87.7	86.3	85.7	85.7	83.4	82.9
Books in Swedish	4.5	3.8	4.3	4.6	5.4	5.4
Books in other languages	7.8	9.9	9.9	9.7	11.3	11.7
Events and activities	1,639	2,470	6,008	2,469	5,597	7,728
Guiding sessions	671	866	1,248	737	2,518	3,720

Source: Culture and Leisure Division.

8.3

Sports and recreation 2000–2024

	2000	2010	2015	2020	2024
City-coordinated sports activities					
Customers	49,386	103,004	149,169	84,425	..
Sports associations and clubs having received allocations	397	398	371	319	..
Outdoor sports facilities¹					
Total number	466	462	552	611	652
of which					
football pitches, tennis courts etc.	286	298	260	254	312
outdoor swimming stadiums	2	2	2	2	2
visitors	313,773	396,592	391,739	245,887	..
Beaches for swimming	25	28	24	26	27
Indoor sports facilities¹					
Total number	72	69	80	79	85
of which public swimming pools ²	4	4	4	4	4
visitors at public swimming pools	715,055	³ 704 456	³ 743 264	³ 447 657	..
Recreational areas and parks					
Area, total, ha	4,641	⁴ 3 850	3,834	3,834	3,813
recreational areas, ha	4,396	3,807	3,774	3,774	3,774
parks, ha	245	43	⁵ 60	⁵ 60	⁵ 60
Mooring places for boats	9,342	12,063	11,923	11,878	11,900
Overnight stays at campsites	102,850	100,787	91,234	48,254	115,200

¹ The classification of sports and recreation facilities changed in 2012.

² Owned by the city.

³ Incl. visits at the public swimming pools in Itäkeskus, Jakomäki, Pirkkola and Yrjönkatu. The Jakomäki public swimming pool was closed in 2010.

⁴ The decrease is due to the fact that some waterfront recreational areas such as Uutela, Ramsinniemi, Meri-Rastila and part of Kallahdenniemi are no longer managed by Helsinki City Sports Department. Nor is the Kauhala area in Kirkkonummi.

⁵ In addition, Paloheinänhuippu, which has been entirely transferred under the control of the Sports Department.

Source: Culture and Leisure Division.

Energy and water supply

List of diagrams and tables

9.1	Production and supply of electric energy 1990–2024	52
9.2	Supply and sale of district heating 1990–2024	52
9.3	Water pumped, sold and consumed 2010–2024	53

9.1

Production and supply of electric energy 1990–2024

	1990	1995	2000	2010	2015	2020	2024
<i>GWh</i>							
Supply and production							
Shares in hydroelectric power stations	270			459	868	845	807
Shares in nuclear-electric power stations	597	} 1,258	1,418	1,144	1,379	1,413	2,262
Other shares	229						
Actual purchase	46	} 326	1,023	159	91	118	
Purchase of substitute electricity	126						
Production of Helsinki City's own power stations	2,798	3,712	5,002	5,716	4,663	3,648	823
Hanasaari	1,835	1,721	619	919	643	534	0
Salmisaari	832	1,033	635	566	570	817	507
Myllypuro	73	–	–	–	–	–	–
Vuosaari	58	957	3,747	4,231	3,450	2,298	316
Kellosaari	–	1	1	–	–	–	–
Total supply	4,066	5,296	7,443	7,859	7,035	6,110	5,020

Source: Helen Ltd.

9.2

Supply and sale of district heating 1990–2024

	1990	2000	2005	2010	2015	2020	2024
Total supply, GWh	5,633	6,537	7,103	7,850	6,436	6,397	6,114
of which							
Hanasaari power stations	3,074	1,267	1,135	1,774	1,297	1,821	0
Salmisaari power stations	1,601	1,298	1,621	1,005	1,296	1,144	1,338
Vuosaari power stations		3,559	3,783	3,887	3,283	2,408	407
Heating sales, GWh	5,444	6,106	6,569	7,363	6,024	6,056	6,362
To the distribution area	5,425	5,886	6,519	7,346	5,985	6,042	6,353
Outside the distribution area	19	220	50	17	39	15	10
Number of clients	9,257	11,374	12,800	14,010	15,039	16,000	15,322

Source: Helen Ltd.

9.3

Water pumped, sold and consumed 2010–2024

	2010	2015	2020	2022	2023	2024
Total water pumped, 1,000 m³						
Metropolitan Area	90,097	88,619	96,000	93,800	93,700	97,300
Total sales, 1,000 m³						
Metropolitan Area	71,360	71,830	75,800	75,300	73,700	75,700
Price of water on Dec 31, euro/m³						
Helsinki	0.78	1.08	1.19	1.27	1.40	1.51
Price of waste water on Dec 31, euro/m³						
Helsinki	1.11	1.34	1.41	1.49	1.64	1.77

Source: Helsinki Region Environmental Services Authority and the cities concerned.

City finances and personnel

List of diagrams and tables

10.1	City of Helsinki consolidated balance sheet Dec 31, 2010–2024.....	55
10.2	City of Helsinki tax revenue, the proportion of state grants in the operational economy, and the annual margin 2000–2024.....	56
10.3	City staff by divisions on Dec 31, 2024.....	56

Million euros, Dec 31	2020	2021	2022	2023	2024
Assets					
Fixed assets					
Intangible assets	249.4	244.1	473.4	390.5	333
Tangible assets	16,379.2	17,039.4	18,068.7	19,129.4	20,588.6
Securities and other long-term investments	1,286.6	1,361.7	1,405.8	1,417.7	1,469.3
Assets managed	659.5	667.9	592.7	652.5	741.6
Current assets					
Inventories	145.1	130.5	305.7	190.0	185.8
Receivables	608.5	745.5	853.0	1,228.5	986.7
Investments	772.8	624.2	977.0	1,207.4	858.6
Cash and bank receivables	855.8	954.2	830.6	360.1	496.1
Total assets	20,956.9	21,767.5	23,506.9	24,576.1	25,659.7
Liabilities					
Capital					
Fixed capital	2,972.4	2,972.4	2,972.4	3,014.8	3,014.8
Basic capital of associations and foundations	7.0	7.0	9.1	9.1	9.1
Revaluation reserve	1,795.8	1,792.6	1,790.6	1,790.3	1,790.0
Other own funds	1,085.6	1,163.8	1,182.0	1,146.8	1,162.0
Other equity	734.1	734.1	734.1	732.2	732.2
Surplus/deficit from previous financial years	5,668.9	6,185.4	6,536.6	7,015.3	7,461.7
Surplus/deficit for financial year	568.9	369.3	430.5	440.7	430.2
Minority interests	171.4	177.8	313.7	287.4	296.7
Provisions	94.6	83.9	98.4	105.7	81.3
Capital managed	683.3	680.4	630.5	681.8	762.4
Loans and borrowings	5,383.8	5,719.8	6,214.6	7,293.3	8,043.8
Long-term	1,791.1	1,881.0	2,594.4	2,058.7	1,875.5
Total liabilities	20,956.9	21,767.5	23,506.9	24,576.1	25,659.7
Loans per inhabitant, euro	8,442	8,941	9,800	10,988	12,036

Source: Annual accounts of the City of Helsinki.

10.2

City of Helsinki tax revenue, the proportion of state grants in the operational economy, and the annual margin 2000–2024

	Total tax revenue ¹	of which			Share of state grants in the operational economy	Annual margin
		Municipal tax	Real estate tax	Share of corporate tax revenue		
<i>Current monetary value in the relevant year, million euros</i>						
2000	2,163	1,347	102	713	-13	506.1
2010	2,506	2,064	185	257	250	388.0
2011	2,740	2,218	187	335	260	574.3
2012	2,759	2,306	189	263	297	439.1
2013	2,906	2,442	195	269	276	472.7
2014	2,952	2,435	207	310	251	480.7
2015	3,068	2,481	214	373	273	265.1
2016	3,206	2,586	221	397	316	569.4
2017	3,381	2,595	257	529	220	837.9
2018	3,417	2,581	263	575	197	752.0
2019	3,494	2,633	274	587	233	741.0
2020	3,565	2,792	254	519	479	863.4
2021	3,829	2,821	281	727	330	757.1
2022	4,100	3,029	296	775	378	732.8
2023	2,038	1,922	307	539	200	854.7
2024	1,868	1,069	353	446	387	754.0

¹ The total sum of tax revenue also includes other tax revenue, chiefly dog tax. (2000–2017).

Source: Annual accounts of the City of Helsinki.

10.3

City staff by divisions on Dec 31, 2024

	Permanent staff	Temporary staff	Total
Central Administration	3,597	584	4,181
Urban Environment Division	1,608	191	1,799
Education Division	9,993	5,245	15,238
Culture and Leisure Division	1,479	365	1,844
Social Services, Health Care and Rescue Services Division	11,819	3,404	15,223
Total	28,496	9,789	38,285

Source: Executive Office. Financial Management Helsinki.

Labour force

List of diagrams and tables

11.1	Labour force by industry¹ and age 2023 (20–74 year olds).....	58
11.2	Percentage of employed people in various age groups by age and gender 2023	59
11.3	Unemployment rate % by gender in 2000–2023	60

	Total		Age				
		%	–24	25–39	40–49	50–59	60–
Labour force total	359,821		26,184	148,645	83,925	67,030	34,037
Employed total	324,589	100.0	28,496	133,440	74,861	58,602	29,190
A Agriculture forestry and fishing	486	0.1	54	120	114	111	87
B Mining and quarrying	71	0.0	1	24	21	11	14
C Manufacturing	18,459	5.7	830	7,340	4,813	3,850	1,626
D Electricity gas heat and air conditioning supply	1,690	0.5	61	830	397	282	120
E Water supply sewerage, waste management and remediation activities	774	0.2	56	311	159	165	83
F Construction	12,987	4.0	772	5,197	3,304	2,620	1,094
G Wholesale and retail trade; repair of motor vehicles and motorcycles	31,285	9.6	5,414	12,019	6,302	5,223	2,327
H Transportation and storage	15,216	4.7	1,226	5,583	3,500	3,348	1,559
I Accommodation and food service activities	14,752	4.5	3,612	5,894	2,637	1,904	705
J Information and communication	30,377	9.4	896	14,753	8,558	4,481	1,689
K Financial and insurance activities	13,076	4.0	678	6,164	3,086	2,175	973
L Real estate activities	4,472	1.4	180	1,512	945	987	848
M Professional, scientific and technical activities	34,510	10.6	1,554	16,813	8,214	5,330	2,599
N Administrative and support service activities	27,419	8.4	5,053	11,396	4,804	4,117	2,049
O Public administration and defence; compulsory social security	19,436	6.0	478	6,826	4,935	4,663	2,534
P Education	25,808	8.0	1,806	9,669	6,464	5,112	2,757
Q Human health and social work activities	45,661	14.1	3,043	17,995	9,948	9,189	5,486
R Arts, entertainment and recreation	11,093	3.4	1,475	4,256	2,615	1,850	897
S Other service activities	10,927	3.4	732	4,120	2,664	2,178	1,233
T Activities of households as employers	581	0.2	100	249	94	85	53
U Activities of extraterritorial organisations and bodies	270.0	0.1	3.0	112.0	73.0	62.0	20.0
X Industry unknown	5,239	2	472	2,257	1,214	859	437
Unemployed	39,919		2,375	15,205	9,064	8,428	4,847
Unemployment rate, %	11.1		9.1	10.2	10.8	12.6	14.2

¹ Standard Industrial Classification 2008.

Source: Statistics Finland. Employment statistics.

11.2

Percentage of employed people in various age groups by age and gender 2023

Age, year olds	Helsinki	Espoo	Vantaa	Kauniainen	Tampere	Turku	Oulu	Finland
15–74	62.3	63.5	62.4	62.7	58.6	57.9	57.2	58.3
15–24	38.3	33.4	38.8	25.1	38.7	41.9	33.9	34.8
25–34	73.9	73.6	72.0	74.5	70.6	70.4	68.2	73.2
35–44	77.3	79.3	76.8	83.2	76.1	75.1	78.2	79.7
45–54	79.2	83.6	80.4	88.2	78.9	77.2	81.7	81.8
55–64	70.6	75.5	72.3	79.6	68.6	67.9	68.2	69.6
65–74	8.7	8.4	7.6	10.2	6.8	6.4	5.5	6.4
Men, year olds								
15–74	62.0	64.3	63.3	62.3	58.6	57.8	56.7	57.7
15–24	33.1	30.7	36.2	21.4	34.6	38.0	30.5	32.2
25–34	74.0	76.2	74.6	74.5	70.4	70.4	67.8	73.5
35–44	77.8	81.4	78.0	84.1	76.5	74.9	78.1	79.8
45–54	77.2	83.0	79.3	88.8	77.2	75.2	80.3	80.0
55–64	67.6	73.6	69.9	78.4	65.8	64.2	65.0	66.3
65–74	9.4	9.4	8.2	11.5	7.8	7.2	5.9	6.4
Women, year olds								
15–74	62.5	62.7	61.3	63.0	58.5	58.0	57.8	58.9
15–24	42.9	36.4	41.6	29.1	42.3	45.4	37.4	37.5
25–34	73.7	70.9	69.1	74.6	70.9	70.4	68.7	72.8
35–44	76.9	77.1	75.4	82.3	75.6	75.2	78.3	79.6
45–54	81.2	84.3	81.6	87.6	80.6	79.3	83.1	83.7
55–64	73.5	77.3	74.7	80.7	71.1	71.2	71.2	72.9
65–74	8.2	7.5	7.2	9.1	6.0	5.8	5.1	6.4

Source: Statistics Finland. Employment statistics.

11.3

Unemployment rate % by gender in 2000–2023

	Helsinki	Espoo	Vantaa	Kauniainen	Tampere	Turku	Oulu	Finland
Total								
2000	8.3	5.9	7.2	4.2	14.0	13.9	13.7	12.5
2005	9.1	6.1	7.9	4.2	12.5	11.4	13.2	11.1
2010	7.8	5.8	8.5	4.1	13.8	12.9	12.8	10.3
2014	11.6	9.7	11.4	6.9	17.4	16.8	17.2	13.8
2015	12.2	10.6	12.3	7.2	18.3	17.1	17.3	14.3
2020	14.1	11.5	14.4	8.8	14.7	15.9	14.0	13.3
2021	10.9	8.9	11.8	6.1	10.9	12.6	11.7	10.2
2022	10.1	8.1	10.4	5.9	9.9	11.5	11.9	9.6
2023	11.1	9.1	11.8	6.1	12.1	12.1	13.1	10.9
Men								
2000	9.6	6.4	7.9	4.5	13.3	14.4	13.4	12.3
2005	10.8	6.9	8.7	5.0	12.5	12.2	13.8	11.4
2010	9.5	6.6	9.9	4.8	15.4	16.1	15.0	11.9
2014	13.3	10.6	12.5	7.9	19.9	19.7	19.9	15.8
2015	13.9	11.4	13.4	8.1	20.3	19.9	19.4	16.1
2020	15.7	12.0	14.7	9.8	16.6	19.3	16.1	15.2
2021	12.3	9.3	12.1	6.5	12.3	14.4	13.5	11.6
2022	11.3	8.3	10.7	7.0	10.9	13.4	13.5	10.9
2023	12.5	9.8	12.8	7.0	13.7	14.1	15.4	12.8
Women								
2000	7.1	5.4	6.5	3.9	14.7	13.4	14.1	12.7
2005	7.5	5.4	7.0	3.5	12.5	10.7	12.5	10.8
2010	6.3	5.0	7.1	3.4	12.1	9.9	10.4	8.8
2014	10.0	8.8	10.3	6.1	15.0	14.0	14.5	11.7
2015	10.7	9.7	11.0	6.3	16.2	14.4	15.1	12.4
2020	12.6	11.0	14.0	7.9	12.8	12.6	11.8	11.4
2021	9.6	8.5	11.4	5.8	9.6	10.8	9.8	8.8
2022	9.0	7.9	10.1	4.8	8.8	9.6	10.3	8.2
2023	9.6	8.5	10.7	5.3	10.5	10.0	10.7	8.9

Source: Statistics Finland. Employment Statistics.

Economic activities

List of diagrams and tables

12.1	Jobs by industry in Helsinki 2021–2023	62
12.2	Jobs by industry in 2023	63
12.3	Number of enterprises, staff and turnover by industry in Helsinki 2023	64

12.1

Jobs by industry in Helsinki 2021–2023

Industry (SIC 2008)	2021	2023	
	<i>Number</i>	<i>Number</i>	<i>% of the whole country</i>
All industries total	416 086	430,886	17.8
A Agriculture, forestry and fishing	380	417	0.7
B Mining and quarrying	60	84	1.3
C Manufacturing	18,096	19,018	6.4
D Electricity, gas, steam and air conditioning supply	2,166	2,136	16.3
E Water supply; sewerage, waste management	1,195	989	7.7
F Construction	21,058	19,409	12.2
G Wholesale and retail trade; repair of motor vehicles and motorcycles	38,149	38,239	15.0
H Transportation and storage	17,300	16,657	13.7
I Accommodation and food service activities	15,039	18,535	21.0
J Information and communication	46,864	49,283	42.4
K Financial and insurance activities	21,366	23,459	48.7
L Real estate activities	6,626	7,300	28.9
M Professional, scientific and technical activities	45,386	47,629	31.4
N Administrative and support service activities	33,928	33,413	18.3
O Public administration and defence; compulsory social security	31,922	33,159	28.4
P Education	24,747	26,283	14.9
Q Human health and social work activities	57,506	59,458	13.6
R Arts, entertainment and recreation	12,174	12,825	27.5
S Other service activities	15,950	16,321	25.6
T Activities of households as employers	660	583	9.7
U Activities of extraterritorial organisations and bodies	426	434	90.2
X Industry unknown	5,088	5,255	17.2

Source: Statistics Finland. Employment statistics.

12.2

Jobs by industry in 2023

	Jobs, total	Industry (SIC 2008)							Work- place self-suffi- ciency, %
		Manufacturing and construction	Trade, transport and accommodation	Information and media	Finance, real-estate, liberal professions and support services	Public administration, education, health and social welfare services	Arts and culture, recreation and other services	Other and unknown	
		C,F	G-I	J	K-N	O-Q	R-S	A-B, D-E, T, U, X	
Helsinki Metropolitan Area	698,973	86,639	147,482	67,125	163,547	177,083	38,770	18,327	117.2
Helsinki	430,886	38,427	73,431	49,283	111,801	118,900	29,146	9,898	132.7
Espoo	138,103	21,645	26,888	15,720	29,067	34,385	5,373	5,025	92.3
Vantaa	127,410	26,470	46,904	2,077	22,239	22,421	3,987	3,312	108.3
Kauniainen	2,574	97	259	45	440	1,377	264	92	57.8
Rest of Helsinki Region	105,022	24,667	23,639	1,342	15,886	30,816	4,703	3,969	66.7
Hyvinkää	19,649	5,061	4,352	205	2,784	6,116	699	432	94.4
Järvenpää	14,078	2,908	2,800	223	2,240	4,854	679	374	65.1
Kerava	12,255	2,774	3,031	186	1,966	3,099	759	440	70.9
Kirkkonummi	10,713	2,088	1,838	152	2,192	3,548	490	405	54.2
Nurmijärvi	6,138	1,135	1,515	65	720	2,072	243	388	63.8
Mäntsälä	12,258	3,319	2,697	106	1,763	3,276	538	559	57.2
Pornainen	1,063	176	203	9	146	355	54	120	43.9
Sipoo	6,920	1,283	2,257	75	1,104	1,626	274	301	62.2
Tuusula	14,251	4,188	3,417	196	1,962	3,342	580	566	71.2
Vihti	7,697	1,735	1,529	125	1,009	2,528	387	384	57.6
Helsinki Region	803,995	111,306	171,121	68,467	179,433	207,899	43,473	22,296	106.7
Tampere	138,159	22,456	23,336	12,494	28,569	42,081	6,003	3,220	118.6
Turku	109,511	16,692	19,878	5,059	21,834	38,292	5,032	2,724	121.3
Oulu	97,873	17,616	16,372	5,867	16,919	34,225	4,028	2,846	104.7
Finland, total	2,417,365	458,098	465,482	116,293	407,773	731,282	110,279	128,158	100

NOTE: The statistics comply with the district division of Jan 1, 2025. Data from merged municipalities have been combined.

Source: Statistics Finland. "Kaupunki- ja seutuindikaattorit", i.e. urban and regional indicator database.

12.3

Number of enterprises, staff and turnover by industry in Helsinki 2023

	Industry (SIC 2008)	Enter-prises	%	Staff	%	Turnover ¹ , 1,000 euro	%
Total		81,451	100	288,879	100	109,292,751	100
C	Manufacturing	2,279	2.8	19,131	6.6	20,604,347	18.9
D	Electricity, gas, steam and air conditioning supply	380	0.5	1,851	0.6	6,318,385	5.8
E	Water supply; sewerage, waste management	88	0.1	838	0.3	316,719	0.3
F	Construction	4,171	5.1	20,203	7.0	7,210,596	6.6
G	Wholesale and retail trade	8,005	9.8	33,311	11.5	33,287,746	30.5
H	Transportation and storage	3,054	3.7	15,434	5.3	3,649,340	3.3
I	Accommodation and food service activities	3,452	4.2	14,351	5.0	2,209,299	2.0
J	Information and communication	6,611	8.1	44,947	15.6	13,352,676	12.2
K	Financial and insurance activities	6,204	7.6
L	Real estate activities	7,444	9.1	5,441	1.9	5,673,432	5.2
M	Professional, scientific and technical activities	16,810	20.6	37,770	13.1	7,640,169	7.0
N	Administrative and support service activities	3,799	4.7	47,009	16.3	4,727,035	4.3
P	Education	1,922	2.4	2,285	0.8	287,943	0.3
Q	Human health and social work activities	5,187	6.4	14,989	5.2	2,056,003	1.9
R	Arts, entertainment and recreation	4,662	5.7	4,073	1.4	1,434,915	1.3
S	Other service activities	4,903	6.0	4,794	1.7	459,880	0.4
A-B, T, U, X	Other or unknown	2,480	3.0	101	0.0	21,222	0.0

¹ Due to rounding off the figures in the turnover column may not add up exactly to the total turnover figure.

Source: Statistics Finland's Business Register.

Income and consumption

List of diagrams and tables

13.1	Income recipients and income by income bracket in Helsinki 2023	66
13.2	Income recipients by age and gender 2014–2023.....	67
13.3	Income subject to state taxation on average by gender and age of income recipient 2014–2023.....	68
13.4	State taxable income of various kinds of households 2023.....	68

13.1

Income recipients and income by income bracket in Helsinki 2023

Income bracket	Income recipients			Income subject to state taxation, share %		
	Persons	%	Accumulation %	Total	Earned income %	Capital income %
-5,000	50,656	8.8	8.7	0.3	0.3	0.5
5,000-10,000	36,392	6.3	15.0	1.2	1.2	0.6
10,000-15,000	51,710	8.9	23.9	2.5	2.7	0.7
15,000-20,000	40,581	7.0	30.9	2.9	3.1	0.8
20,000-25,000	40,438	7.0	37.9	3.6	3.9	1.0
25,000-30,000	41,147	7.1	45.0	4.5	4.9	1.2
30,000-35,000	43,184	7.5	52.5	5.6	6.0	1.4
35,000-40,000	41,906	7.2	59.7	6.3	6.8	1.6
40,000-50,000	70,344	12.2	71.9	12.6	13.5	3.6
50,000-60,000	49,503	8.6	80.4	10.8	11.5	3.9
60,000-80,000	55,090	9.5	90.0	15.1	15.9	7.4
80,000-100,000	25,260	4.4	94.3	9.0	9.3	6.2
100,000-	32,713	5.7	100.0	25.5	20.9	71.1
Total	578,924	100		100	100	100
Income, 1,000 euro				24,990,626	22,680,352	2,310,274
Share of income subject to state taxation				100	91	9

Source: Finnish Tax Administration.

13.2

Income recipients by age and gender 2014–2023

	Age, years								Total
	-18	18-24	25-34	35-44	45-54	55-64	65-74	75+	
Total									
2014	14,944	53,907	114,081	84,912	80,550	71,022	59,970	45,839	525,225
2015	14,720	52,984	117,571	88,840	81,194	71,931	62,000	46,434	535,674
2016	15,120	52,121	119,721	91,919	80,775	72,516	62,416	48,145	542,733
2017	15,606	51,044	121,971	95,581	80,052	73,282	64,402	48,448	550,386
2018	16,083	50,440	122,711	98,485	77,968	74,049	64,936	49,911	554,583
2019	17,117	49,444	124,178	101,557	77,700	75,201	65,618	51,436	562,251
2020	15,543	47,358	123,509	103,287	77,517	75,983	65,188	54,189	562,574
2021	17,248	47,338	122,965	103,808	77,806	76,524	64,204	57,018	566,911
2022	17,899	48,466	121,512	104,214	78,285	76,896	62,908	59,656	569,836
2023	18,212	49,259	119,798	105,775	78,867	77,164	61,909	61,757	572,741
%	3.2	8.6	20.9	18.5	13.8	13.5	10.8	10.8	100

	Gender		
	Men	Women	Total
2014	244,628	280,597	525,225
2015	250,145	285,529	535,674
2016	254,225	288,508	542,733
2017	258,848	291,538	550,386
2018	261,405	293,178	554,583
2019	265,827	296,424	562,251
2020	265,394	297,180	562,574
2021	267,397	299,514	566,911
2022	269,287	300,549	569,836
2023	270,407	302,334	572,741
%	47.2	52.8	100

Source: Finnish Tax Administration.

13.3

Income subject to state taxation on average by gender and age of income recipient 2014–2023

2023 currency rate, euro/ year	Age, years								Total
	-18	18–24	25–34	35–44	45–54	55–64	65–74	75+	
Total									
2014	1,856	14,489	34,191	50,608	55,384	54,361	44,150	33,904	41,060
2015	1,817	14,331	34,870	51,516	56,415	55,062	45,671	34,799	41,912
2016	1,799	14,467	34,890	51,388	56,324	54,759	44,559	35,234	41,788
2017	1,793	14,762	36,000	52,747	57,318	55,973	45,112	36,742	42,860
2018	2,031	14,766	37,089	54,756	59,510	57,416	45,580	37,338	44,062
2019	1,847	14,984	37,485	53,810	60,282	58,025	46,025	38,842	44,388
2020	2,012	14,264	38,278	55,606	61,465	58,719	44,951	38,997	45,234
2021	1,946	14,609	40,064	58,147	66,835	61,323	46,856	40,415	47,438
2022	2,068	14,270	39,219	56,197	63,928	58,502	44,536	38,730	45,567
2023	1,878	13,795	37,621	51,961	61,381	56,555	42,909	38,284	43,549

Gender

	Men	Women	Total	Women's income as % of men's
2014	47,365.08	35,563.14	41,059.98	75.1
2015	48,830.61	35,850.83	41,912.39	73.4
2016	48,507.77	35,866.66	41,788.47	73.9
2017	50,179.23	36,362.47	42,860.06	72.5
2018	51,761.17	37,198.33	44,062.03	71.9
2019	51,274.18	38,213.58	44,388.08	74.5
2020	52,890.65	38,396.35	45,234.65	72.6
2021	56,256.28	39,566.00	47,438.36	70.3
2022	53,732.37	38,250.84	45,566.94	71.2
2023	50,454.00	37,374.00	43,549.00	74.1

Source: Finnish Tax Administration.

13.4

State taxable income of various kinds of households 2023

	Household-dwelling units	Income subject to state taxation	
	Number	Average per household-dwelling unit, euro	Median per household-dwelling unit, euro
Total	356,248	67,892	47,230
1-member household	182,196	37,800	30,332
Married/unmarried couple without children. or at least 2 persons (not a family)	77,963	99,713	81,106
Married/unmarried couple with children	51,832	130,467	105,401
Single-parent family	23,823	49,593	39,858
Others	20,434	77,397	61,627

Source: Statistics Finland.

Justice and public safety

List of diagrams and tables

14.1	Offences known to the police in Helsinki Police District 1995–2024	70
14.2	Fines and convictions at courts of first instance 2023.....	70
14.3	Helsinki City Rescue Department’s operation 2015–2024	71

14.1

Offences known to the police in Helsinki Police District
1995–2024

	1995	2000	2005	2010	2015	2020	2024
Total	103,170	106,162	100,108	116,990	104,473	106,036	84,185
All offences, Helsinki	77,791	85,284	74,583	83,520	74,504	84,998	81,035
% of all offences in Finland	18.4	18.8	17.3	19.4	18.0	16.8	15.5
Crime against property	58,912	64,700	49,874	56,245	47,023	48,382	43,130
Crime against life and health	4,887	5,047	5,450	6,783	6,294	6,025	7,385
Sexual offences	191	178	359	315	428	647	1,134
Offences against justice, authorities and public order	1,044	2,053	2,604	2,903	2,944	3,269	3,786
Certain traffic offences	3,189	4,745	6,896	5,695	4,479	6,508	4,359
Other crimes	9,568	8,561	9,400	11,579	13,336	20,167	14,211
Endangering traffic safety hit-and-run, traffic (motoring) offences	25,379	20,878	25,525	33,470	29,969	18,796	7,372
Share of similar offences in the whole country %	7.6	6.7	7.2	6.6	7.4	9.2	8.9

Source: Helsinki Policy Authority and Statistics Finland. Justice. Yearbook of Justice Statistics.

14.2

Fines and convictions at courts of first instance 2023

	Helsinki		Finland	
	Total	Residents of Helsinki	Total	Residents of Helsinki
Total	21,804	12,047	164,372	17,844
Summary penal fee ¹	401	237	2,666	270
Fine orders ²	8,477	4,762	75,870	7,323
Fines	5,233	2,722	34,001	4,004
Verdicts of guilty ³	7,693	4,326	51,835	6,247
imprisonment	1,066	535	5,468	795
community service	149	96	1,415	128
supervisory sentence (electronic tag curfew)	5	3	149	7
probation	1,838	1,053	12,898	1,473
earlier conviction sufficient (Finnish Penal Code 7:6-7§§)	153	77	1,143	148
fines	3,999	2,251	28,717	3,298
mistrials	61	43	302	53
other punishments	422	268	1,743	345

¹ Including also summary penal fees by courts of law.

² Dec 1–31, 2023. A new Fines Act came into effect on Dec 1, 2023.

³ Not including summary penal fees by courts of law.

Source: Statistics Finland.

14.3

Helsinki City Rescue Department's operation 2015–2024

	2015	2020	2021	2022	2023	2024
Total staff	674	720	760	797	752	798
Rescue operations	4,930	8,807	9,438	8,704	9,597	8,543
Emergency medical care alarms	54,596	56,608	63,888	64,000	60,914	52,961
Accident prevention	4,335	6,293	5,927	6,454	7105	8,490
Fire inspections	3,204	2,209	2,824	2,121	2,589	2,220
Places in bomb shelter	867 878	926,743	911,719	938,801	948,859	955,248

Source: Helsinki City Rescue Department and RegionCD.

Elections

List of diagrams and tables

15.1	Municipal elections in Helsinki 2000–2025.....	73
15.2	Parliamentary elections in Helsinki 2011–2023	73
15.3	Presidential elections in Helsinki 2006–2024.....	74
15.4	EU Parliament elections 2014, 2019 and 2024	74

15.1

Municipal elections in Helsinki 2000–2025

	2000	2004	2008	2012	2017	2021	2025
Persons entitled to vote	452,271	459,428	474,209	499,692	527,982	542,830	560,647
% of persons entitled to vote in Finland	11,3	11,2	11,3	11,6	12	12,2	14,1
Persons who voted in Helsinki	230,336	262,362	279,181	286,787	326,351	334,867	342,665
Voting turnout %	50.9	57.1	58.9	57.4	61.8	61.7	61.1
Voting turnout % in municipal elections in Finland ¹	55.9	58.6	61.2	58.3	58.9	55.1	51.7
Ballots rejected in Helsinki	1,289	1,457	1,387	1,420	1,126	972	1,054
Percentage	0.6	0.6	0.5	0.5	0.3	0.3	0.3
Percentage in the whole country ²	0,8	0,6	0,6	0,5	0,6	0,5	1,6

¹ Of those entitled to vote.

² Of ballots submitted.

Source: Statistics Finland.

15.2

Parliamentary elections in Helsinki 2011–2023

	2011 ¹	2011 ²	2015 ¹	2015 ²	2019 ¹	2019 ²	2023 ¹	2023 ²
Persons entitled to vote	454,861	44,720	472,893	48,982	488,502	52,381	491,137	55,238
% of persons entitled to vote in Finland	10.4	19.6	11.2	20.2	11.5	20.6	11.5	21.0
Men	207,028	16,514	216,144	18,303	223,656	19,716	224,960	21,001
Women	247,833	28,206	256,749	30,679	264,846	32,665	266,177	34,237
Persons who voted in Helsinki	343,523	6,446	355,359	6,888	379,511	9,253	381,953	9,527
Voting turnout % ³	75.5	14.4	75.1	14.1	77.7	17.7	77.8	17.2
Voting turnout % in parliamentary elections in Finland ³	70.5	10.6	70.1	10.1	72.1	12.6	72.0	12.2
Ballots rejected in Helsinki	2,084	..	2,372	..	3,204	..	2,979	..
Percentage ⁴	0.6	..	0.7	..	0.7	..	0.8	..
Percentage in the whole country ⁴	0.6	..	0.5	..	0.6	..	0.5	..

¹ Finnish citizens resident in Finland. For more details, see www.vaalit.fi.

² Finnish citizens resident abroad. For more details, see www.vaalit.fi.

³ Of those entitled to vote.

⁴ Of ballots submitted.

Source: Statistics Finland.

15.3

Presidential elections in Helsinki 2006–2024

	2006		2012		2018	2024	
	<i>First round</i>	<i>Second round</i>	<i>First round</i>	<i>Second round</i>	<i>First round</i>	<i>First round</i>	<i>Second round</i>
Persons entitled to vote	478,589	478,589	502,960	502,960	535,967	549,861	549,861
In Helsinki ¹	439,144	439,144	457,588	457,588	484,684	494,087	494,087
Abroad ²	39,445	39,445	45,372	45,372	51,283	55,774	55,774
Persons who voted	349,649	356,786	358,412	350,718	358,681	401,037	390,527
In Helsinki ¹	335,229	350,856	350,317	342,487	349,687	389,142	378,437
Voting turnout % ³	76.3	79.9	76.6	74.8	72.1	78.8	76.6
Abroad ²	5,420	5,930	8,095	8,231	8,994	11,895	12,090
Voting turnout % ³	13.7	15.0	17.8	18.1	17.5	21.3	21.7

¹ Persons in Helsinki's population register. For more details, see www.vaalit.fi

² Persons not resident but entitled to vote in Helsinki. For more details, see www.vaalit.fi

³ Of those entitled to vote.

Source: Statistics Finland.

15.4

EU Parliament elections 2014, 2019 and 2024

	2014		2019		2024	
	<i>Helsinki</i>	<i>Finland</i>	<i>Helsinki</i>	<i>Finland</i>	<i>Helsinki</i>	<i>Finland</i>
Persons entitled to vote	516,194	4,440,297	540,402	4,504,481	551,032	4,546,589
Persons who voted	250,194	1,736,618	278,536	1,836,059	283,171	1,835,762
Voting turnout % ¹	48.5	39.1	51.5	40.8	51.4	40.4
Ballot papers rejected	1,255	10,435	836	6,014	761	6,513
Voting turnout % ²	0.5	0.6	0.3	0.3	0.3	0.4

¹ Of those entitled to vote.

² Of ballots submitted.

Source: Statistics Finland.

Helsinki

The Helsinki Statistical Yearbook compiles a wide range of statistics on various themes. It presents a comprehensive picture of Helsinki, its residents and development based on reliable statistical data. In addition to the statistics on Helsinki, the yearbook offers comparative data regarding the Helsinki Metropolitan Area, the Helsinki Region and Finland as a whole. The various themes and their development are described in a total of 73 statistical tables.