

Helsinki

Statistical Yearbook of Helsinki

2023

Statistical Yearbook of Helsinki

2023

21th volume

The data in the tables and statistical figures are available in an accessible format by e-mail at kaupunkitieto.kirjasto(at)hel.fi

City of Helsinki. Executive Office. Urban Research and Statistics

Address	P.O. Box 550. FI-00099 City of Helsinki. Finland (Työpajankatu 8)
Telephone	+358 9 310 43297
Inquiries	Ari Jaakola. tel. +358 9 310 43608. ari.jaakola@hel.fi Solja Saarto. tel. +358 310 36378. solja.saarto.@hel.fi
ISBN	978-952-386-423-8

Contents

Preface	4
Explanation of symbols	5
Area and environment	7
Population	11
Housing.....	23
Transport and Tourism	31
Health care	35
Social welfare	41
Education.....	45
Culture and leisure	51
Energy and water supply.....	55
City finances and personnel	59
Labour force	63
Economic activities.....	67
Income and consumption.....	71
Justice and public safety	75
Elections.....	79

Preface

The Helsinki Statistical Yearbook of Helsinki brings together a wide range of statistics on various themes. It presents a comprehensive picture of Helsinki, its residents and development based on reliable statistical data. In addition to the statistics on Helsinki, the yearbook offers comparative statistics regarding the Helsinki Metropolitan Area, the Helsinki Region and Finland as a whole. Furthermore, the book contains separate sections on the major city regions in Scandinavia and the capitals of the Baltic States. The various themes and their development are described in a total of 247 statistical tables.

The 2023 yearbook is the 111th annual edition. Over the decades, the content of the yearbook has been revised several times, but the purpose of giving a varied description of the city and its residents based on the latest statistics remains the same.

The effects of the corona pandemic are still visible in the statistics. In 2021, Helsinki's population growth was slower than at any time since 2005. In addition, the effects of the corona pandemic can be seen in for example in the statistics of the culture and tourism sector. The Statistical Yearbook of Helsinki can be studied online (see www.hel.fi/urbanfacts). The 1905–2008 editions are available in a digital format on the City Archives database Sinetti (www.sinettiarkisto.fi). Furthermore, the tables of the yearbook are available as open data on the Helsinki Region Infoshare web service (www.hri.fi). The latter contains all the statistical tables published in the yearbook since 2002.

Additional information on many themes covered in the yearbook can be found in the statistical and research publications of the City of Helsinki Executive Office (www.hel.fi/urbanfacts). Statistics on Helsinki by districts and sub-districts are available on the Helsinki Region Area Database (www.aluesarjat.fi). The publication Helsinki by District Library of Urban Research and Statistics provides an information service related to urban research and statistics in Helsinki.

The yearbook is compiled by the Urban Research and Statistics Unit in the City Executive Office, but the statistics included in the book has been provided by many informants in the city organization and outside it. The editorial work for this year's edition was carried out by Information Service Secretary **Solja Saarto**. The layout was designed by Graphic Designer **Lotta Haglund** and prepared by Statistics Secretary **Sirkka Koski**. I want warmly thank all our cooperation partners within and outside the city administration for their invaluable contribution to the completion of the Statistical Yearbook of Helsinki 2023.

Helsinki, November 2023

Ari Jaakola

Statistics and Information Services Manager

Explanation of symbols

Coefficients for monetary value

Year	2021 currency rate		2022 currency rate	
	Coefficient	Year	Coefficient	Year
1995	0.2441	1995	0.2615	
2000	0.2261	2000	0.2422	
2005	1.2657	2005	1.3558	
2010	1.1519	2010	1.2339	
2018	1.0354	2019	1.0979	
2019	1.0249	2020	1.0947	
2020	1.0220	2021	1.0712	
2021	1.0000	2022	1.0000	

Explanation of symbols

Magnitude nil	–
Magnitude less than half of unit employed	0
Data subject to secrecy	...
Data not available	..
Category not applicable	.
Preliminary data	*
Corrected figure	◆
Men	M
Women	W
A horizontal line drawn across a time series shows substantial breaks in the homogeneity of a series.	

Reader instructions

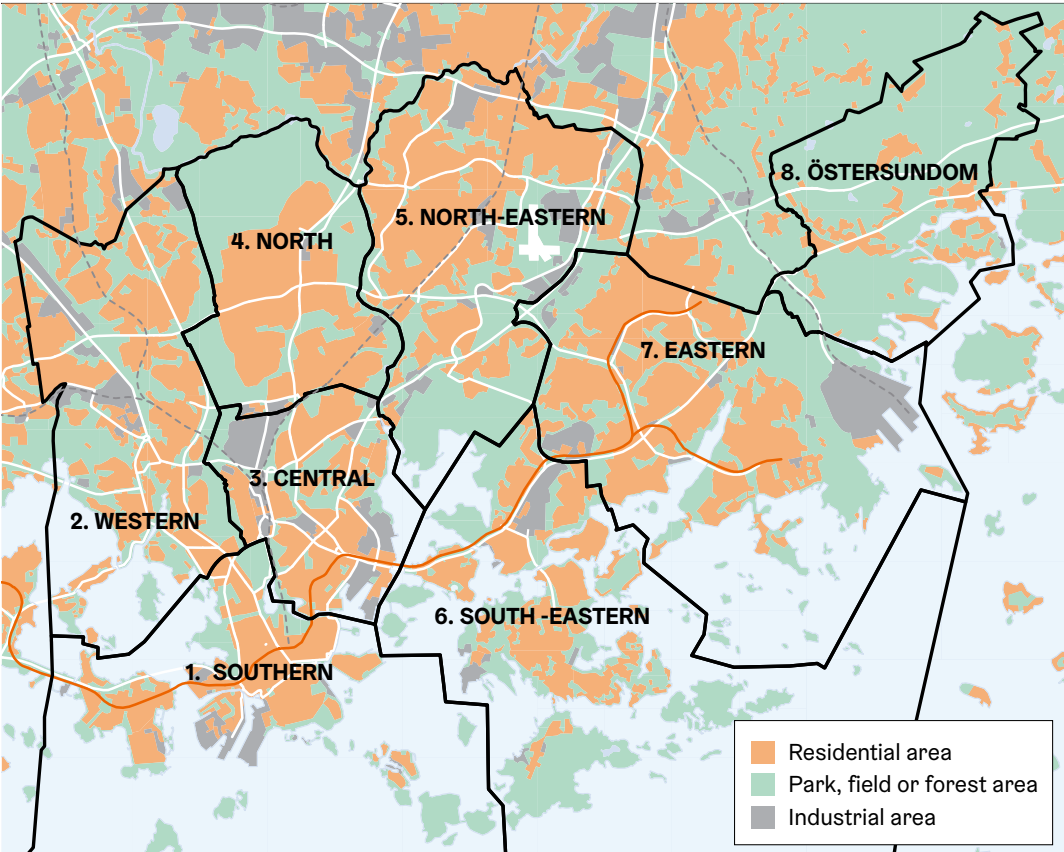
The book contains some data denominated in euros expressed in fixed monetary value for 2020 or 2021. This has been done in an attempt to eliminate the impacts of changes in monetary value on the figures. The cost of living index 1951:10 = 100 has been used as the **deflation coefficient**. The coefficients for different years are stated in conjunction with the symbols.

There is always a reference in conjunction with the euro-denominated data as to whether the figures have been stated in fixed monetary value for 2021 or 2022. Where no reference is stated, the euro-denominated data is in the current monetary value. Where figures are examined **in relation to the population figure**, the average population figure has been used as the population figure if the data apply to the whole year.

The year book presents **district data** in accordance with the **district division system** approved by the City Board. The district division system is at four levels with the city being divided into 8 major districts, which are subdivided into a total of 34 districts. These districts comprise sub-districts and small districts in the official district division. There are currently 148 sub-districts and 404 small areas. Each major district, district and sub-district has a code and name confirmed by the City Board and small areas have a code only. Major districts have a single-digit code from 1-8 and districts have a three-digit code, with the first digit designating the major district in which the district lies. The three-digit code of sub-districts is formed from the city area code (the two first digits) and the sub-district code (the last digit). A full list of the district names and codes in the district division system can be found with the district division map appendix.

The Helsinki Metropolitan Area comprises the cities of Helsinki, Espoo, Vantaa and Kauniainen. **The Helsinki Region** comprises these four cities and those of Hyvinkää, Järvenpää, Kerava, Kirkkonummi, Nurmijärvi, Sipoo, Tuusula, Vihti and, since 1 Jan. 2005, Mäntsälä and Pornainen.

Major districts and land use in Helsinki 2022



© Helsingin kaupunkimittauspalvelut, Helsingin seudun kunnat ja HSY, 2020

Area and environment

List of diagrams and tables

1.1	Area and population density by major district 2023.....	8
1.2	Air temperature and water-level 1995–2022.....	8
1.3	Respirable particles (PM ₁₀), nitrogen dioxide and ozone in the air 2005–2022	9
1.4	Green house gas emissions corresponding to consumption in Helsinki 1990–2022	9
1.5	Water quality in certain sea areas in Helsinki	10

1.1

Area and population density by major district 2023

Major District	Area, km ²		Inhabitants per km ² land
	Total	of which land ¹	
1. Southern	152.7	18.1	6,734
2. Western	36.5	30.5	3,680
3. Central	17.7	15.8	6,419
4. Northern	23.2	23.2	1,863
5. North-Eastern	37.6	36.4	2,740
6. South-Eastern	362.4	25.2	2,271
7. Eastern	56.5	37.5	3,021
8. Östersundom	28.7	26.2	68.0
Islands not included in these areas	3.6	3.6	
The whole city	719.0	216.5	3,067
Espoo	528.0	330.3	924.0
Vantaa	240.4	240.4	1,010
Kauniainen	6.0	6.0	1,714
Helsinki Region	5,518.9	3,841.5	405.0

¹ Incl. lakes and streams.

Source: Helsinki Municipal Data System, City of Helsinki, Urban Environment Division and National Land Survey of Finland (NLS).

1.2

Air temperature and water-level 1995–2022

	Air temperature (°C) ¹			Water-level (cm) ²		
	Mean	Max.	Min.	Mean	Max.	Min.
1995	6.2	27.7	-24.4	8	94	-56
2000	7.2	26.3	-18.0	6	85	-51
2005	6.6	29.6	-18.3	4	151	-44
2010	5.0	30.1	-22.6	-10	64	-93
2015	7.8	26.9	-14.0	10	114	-45
2020	8.7	28.0	-8.2	13	104	-43
2022	7.3	29.5	-17.6	3	37	-25
I	-2.1	6.9	-17.6	22	62	-17
II	-1.0	5.1	-12.6	47	92	22
III	1.0	13.6	-8.2	-5	43	-34
IV	4.2	14.3	-5.0	-8	42	-34
V	9.5	19.5	-0.5	-8	18	-28
VI	16.8	29.5	8.2	5	3	-11
VII	18.5	28.1	11.4	12	34	-12
VIII	19.3	28.2	9.8	-4	27	-21
IX	10.8	17.5	4.5	-19	8	-52
X	8.8	15.3	-1.3	9	43	-20
XI	3.3	14.3	-4.0	-3	41	-33
XII	-1.6	5.1	-13.5	-12	30	-63

¹ At Kaisaniemi monitoring station.

² At surface by a quay in the Kaivopuisto district.
The measure is the theoretical average water level.

Source: Finnish Meteorological Institute.

1.3

Respirable particles (PM₁₀), nitrogen dioxide and ozone in the air 2005–2022

Air quality	Annual mean, µg/m ³				
	2005	2010	2015	2020	2022
Respirable particles content, PM₁₀					
Mannerheimintie 5 ¹	30	25	20	16	18
Kallio	15	15	12	9	9
Leppävaara ² (in Espoo)	23	15	20	14	14
Tikkurila (In Vantaa)	23	16	12	12	12
Nitrogen dioxide content, NO₂					
Mannerheimintie 5 ¹	43	41	32	16	19
Kallio	22	23	18	10	12
Leppävaara ² (in Espoo)	24	28	23	14	15
Tikkurila (In Vantaa)	30	30	21	14	16
Ozone content, O₃					
Mannerheimintie 5 ¹	37	39	41	..	44
Kallio	48	48	50	51	52
Tikkurila	46	44

¹ Measuring started in 2005.

² Location of monitoring station changed in January 2005 and 2010.

Source: HSY Helsinki Region Environmental Services Authority: Ilmanlaatu pääkaupunkiseudulla.

1.4

Green house gas emissions corresponding to consumption in Helsinki 1990–2022

Total emissions, 1,000 t CO₂ equiv.

	1990	2000	2010	2015	2020	2022	1990–2022 change%
Total	3,514	3,120	3,249	2,602	2,344	2,639	-25
District heating	1,662	1,205	1,362	1,215	1,236	1,576	-5
Electrical heating	114	105	90	79	72	65	-43
Individual property heating	78	96	111	73	52	43	-45
Consumer electricity	516	686	838	481	314	301	-42
Transportation	686	710	719	624	577	566	-17
Industry and work machinery	168	97	26	20	33	40	-76
Waste and waste water treatment	288	221	100	110	60	47	-84
Agriculture	2	1	1	1	1	1	-48

Emissions per capita, tons of CO₂ equiv./inhabitant

	1990	2000	2010	2015	2020	2022	1990–2022 change%
Total	7.1	5.6	5.5	4.1	3.6	4.2	-44
District heating	3.4	2.2	2.3	1.9	1.9	2.4	-29
Electrical heating	0.2	0.2	0.2	0.1	0.1	0.1	-57
Individual property heating	0.2	0.2	0.2	0.1	0.1	0.1	-37
Consumer electricity	1.0	1.2	1.4	0.8	0.5	0.5	-52
Transportation	1.4	1.3	1.2	1.0	0.9	0.9	-35
Industry and work machinery	0.3	0.2	0.0	0.0	0.1	0.1	-71
Waste and waste water treatment	0.6	0.4	0.2	0.2	0.1	0.1	-83
Agriculture	0.0	0.0	0.0	0.0	0.0	0.0	..

Source: City of Helsinki. Urban Environment Division.

1.5

Water quality in certain sea areas in Helsinki

Body of water	Ecological state				Chemical state				
	1973–1976	2016–2021	Materials and grounds for estimation	Reason for change	2000–2007	2006–2012	2012–2021	Chemical classification	Reason for change
Sipoo archipelago	Passable	Passable	2		Good	Good	Worse than good	1	3
Villinki	Passable	Passable	3		Good	Good	Worse than good	1	3
Kruunuvooren-selkä	Bad	Passable	3	2	Good	Worse than good	Worse than good	2	3
Seurasaari	Bad	Passable	3	2	Good	Good	Worse than good	2	3
Suvisaaristo-Lauttasaari	Passable	Satisfactory	3	3	Good	Good	Worse than good	2	3
Porvoo-Helsinki	Satisfactory	Satisfactory	1		Good	Good	Worse than good	1	3
Helsinki-Porkkala	Satisfactory	Satisfactory	1		Good	Good	Worse than good	1	3

Ecological classification

Materials

Grounds for classification

- | | | |
|---|------------|---|
| 1 | Extensive | Extensive phytoplankton chlorophyll a materials and intensive station biomass materials, growth depth of kelp in a sheltered and open coastal zone and benthic materials. |
| 2 | Extensive | Extensive phytoplankton chlorophyll a materials (passable) and quite extensive benthic materials (satisfactory). |
| 3 | Extensive | Phytoplankton chlorophyll a materials and benthic results. |
| 4 | Restricted | Phytoplankton chlorophyll materials and benthic results. |
| 5 | Restricted | Very restricted materials, water quality results from one station in 2011 and benthic information from two stations in 2011. |

Reason for change

- The state of both biological and physico-chemical factors has deteriorated. Sea-bottom de-oxygenation and, in summer, algal bloom occur in the area.
- With decreasing external loads, the bottom fauna in the area has recovered, which has improved the ecological quality rating. Waternutrient concentrations, too, have decreased.
- The bottom fauna has recovered and become more diversified, which has improved the ecological quality rating.

Chemical classification

- Evaluation of chemical state made as expert evaluations when lacking suitable materials.
- Classification based on measurements, restricted materials.

Source: Urban Environment Division.

Population

List of diagrams and tables

Population by mother tongue and age 31.12.2022	21
2.1 Helsinki's population 1875–2022¹	12
2.2 Population by age and sex on 31 Dec 2000–2022	13
2.3 Population on 31 Dec 2000–2022 and a projection for 31 Dec 2037 by district	14
2.4 Population by citizenship on 31 Dec 2005–2022	15
2.5 Persons having received a Finnish citizenship by mother tongue 2010–2022	16
2.6 Population by religious affiliation on 31 Dec 2000–2022	16
2.7 Families in Helsinki by type and age of children 1990–2022¹	17
2.8 Population changes by district 2022	18
2.9 Births in Helsinki in 1901–2022	19
2.10 Deaths¹ in Helsinki in 1901–2022	20
2.11 Life expectancy (average expectation of remaining lifetime) 1991–2022	20
2.12 Direction of migration 1986–2022	21

Year	Total	Change ² Number	%	Men	Women	Women per 1,000 men
<i>1 Jan</i>						
1875	23,070	1,313	6.0	10,236	12,834	1,254
1880	36,346	13,276	57.5	16,403	19,943	1,216
1885	41,579	5,233	14.4	18,746	22,833	1,218
1890	56,236	14,657	35.3	25,519	30,717	1,204
1895	64,554	8,318	14.8	28,213	36,341	1,288
1900	79,126	14,572	22.6	35,010	44,116	1,260
1905	93,626	14,500	18.3	41,198	52,428	1,273
1910	118,736	25,110	26.8	52,179	66,557	1,276
1915	153,467	34,731	29.3	69,102	84,365	1,221
1920	152,200	-1,267	-0.8	64,434	87,766	1,362
1925	162,070	9,870	6.5	67,545	94,525	1,399
1930	205,833	43,763	27.0	87,022	118,811	1,365
1935	225,482	19,649	9.5	94,146	131,336	1,395
1940	252,484	27,002	12.0	105,777	146,707	1,387
1945	276,277	23,793	9.4	113,710	162,567	1,430
1950	368,519	92,242	33.4	157,080	211,439	1,346
1955	403,970	35,451	9.6	174,553	229,417	1,314
1960	448,315	44,345	11.0	196,689	251,626	1,279
1965	494,796	7,374	1.5	219,975	274,821	1,249
1970	523,677	-1,951	-0.4	233,373	290,304	1,244
1975	502,961	-7,244	-1.4	223,252	279,709	1,253
1980	483,675	-1,728	-0.4	215,061	268,614	1,249
1985	484,122	-269	-0.1	216,411	267,711	1,237
<i>31 Dec</i>						
1990	492,400	1,771	0.4	222,566	269,834	1,212
1995	525,031	9,266	1.8	240,638	284,393	1,182
1996	532,053	7,022	1.3	244,621	287,432	1,175
1997	539,363	7,310	1.4	248,395	290,968	1,171
1998	546,317	6,954	1.3	252,366	293,951	1,165
1999	551,123	4,806	0.9	254,967	296,156	1,162
2000	555,474	4,351	0.8	257,399	298,075	1,158
2001	559,718	4,244	0.8	260,070	299,648	1,152
2002	559,716	-2	0.0	260,236	299,480	1,151
2003	559,330	-386	-0.1	260,441	298,889	1,148
2004	559,046	-284	-0.1	260,573	298,473	1,145
2005	560,905	1,859	0.3	261,627	299,278	1,144
2006	564,521	3,616	0.6	263,343	301,178	1,144
2007	568,531	4,010	0.7	265,728	302,803	1,140
2008	576,632	8,101	1.4	270,176	306,456	1,134
2009	583,350	6,718	1.2	273,577	309,773	1,132
2010	588,549	5,199	0.9	276,361	312,188	1,130
2011	595,384	6,835	1.2	280,064	315,320	1,126
2012	603,968	8,584	1.4	284,562	319,406	1,122
2013	612,664	8,696	1.4	288,957	323,707	1,120
2014	620,715	8,051	1.3	293,113	327,602	1,118
2015	628,208	7,493	1.2	297,151	331,057	1,114
2016	635,181	6,973	1.1	301,010	334,171	1,110
2017	643,272	8,091	1.3	305,237	338,035	1,107
2018	648,042	4,770	0.7	307,633	340,409	1,107
2019	653,835	5,793	0.9	310,702	343,133	1,104
2020	656,920	3,085	0.5	312,196	344,724	1,104
2021	658,457	1,537	0.2	313,429	345,028	1,101
2022	664,028	5,571	0.8	316,540	347,488	1,098

¹ Figures include foreign nationals from 1951 on (and for the year 1915, when Russian subjects were included).

² Up until 1960 the change over the previous 5 years, after 1960 the change during the previous year.

Source: Census lists 1875–1989 and since 1990 Population Register Centre.

	2000	2005	2010	2015	2020	2021	2022
Total population							
Total	555,474	560,905	588,549	628,208	656,920	658,457	664,028
0–6 year olds	40,306	36,884	40,064	45,379	44,722	44,030	43,187
7–15	48,501	48,746	45,158	47,675	54,887	56,065	57,218
16–17	15,880	16,553	17,852	16,085	16,665	17,327	17,861
18–29	100,626	103,228	110,221	115,287	109,843	107,388	107,137
30–44	135,490	129,166	132,024	146,508	163,810	164,240	166,781
45–64	140,105	148,466	155,164	153,210	152,687	153,425	154,685
65–74	39,447	40,519	48,163	60,865	63,660	62,688	61,568
75–84	25,651	27,297	28,376	30,250	36,523	39,016	41,256
85–89	6,399	6,556	7,519	8,357	8,688	8,747	8,784
90–94	2,569	2,781	3,134	3,561	4,246	4,300	4,308
95–	500	709	874	1,031	1,189	1,231	1,243
Total %	100	100	100	100	100	100	100
0–6 year olds	7.3	6.6	6.8	7.2	6.8	6.7	6.5
7–15	8.7	8.7	7.7	7.6	8.4	8.5	8.6
16–17	2.9	3.0	3.0	2.6	2.5	2.6	2.7
18–29	18.1	18.4	18.7	18.4	16.7	16.3	16.1
30–44	24.4	23.0	22.4	23.3	24.9	24.9	25.1
45–64	25.2	26.5	26.4	24.4	23.2	23.3	23.3
65–74	7.1	7.2	8.2	9.7	9.7	9.5	9.3
75–84	4.6	4.9	4.8	4.8	5.6	5.9	6.2
85–89	1.2	1.2	1.3	1.3	1.3	1.3	1.3
90–94	0.5	0.5	0.5	0.6	0.6	0.7	0.6
95–	0.1	0.1	0.1	0.2	0.2	0.2	0.2
Percentage of men							
Total	46.3	46.6	47.0	47.3	47.5	47.6	47.7
0–6 year olds	50.9	50.6	50.9	51.4	51.0	51.0	51.1
7–15	51.1	51.0	51.0	51.0	51.2	51.1	51.1
16–17	49.7	50.2	50.1	49.1	49.7	49.2	49.3
18–29	47.5	47.2	46.7	46.4	46.0	46.1	46.1
30–44	49.5	50.2	50.8	51.1	50.9	50.8	50.6
45–64	45.8	46.2	46.7	47.4	48.4	48.7	49.0
65–74	40.3	41.3	42.1	42.7	42.7	43.0	43.3
75–84	29.2	32.5	35.6	37.2	38.4	38.5	38.7
85–89	20.8	22.4	25.5	29.1	32.1	32.7	32.4
90–94	17.2	16.5	18.8	21.4	24.6	25.5	26.2
95–	12.8	14.7	14.0	14.9	15.5	16.6	17.0

Source: Statistics Finland.

	2000	2010	2020	2022	2037
Helsinki, total	551,123	583,350	656,920	664,028	767,601
%	100	100	100	100	100
<i>Major Districts</i>					
1. Southern Major District	97,015	99,683	121,294	121,877	134,250
%	17.6	17.1	18.5	18.4	17.5
101 Vironniemi district	11,772	11,671	12,915	12,984	12,097
102 Ullanlinna district	22,668	23,050	24,859	24,374	27,282
103 Kampinmalmi district	29,796	30,394	43,220	44,433	48,609
104 Taka-Töölö district	14,432	14,502	15,478	15,343	15,447
105 Lauttasaari district	18,347	20,066	24,822	24,743	30,815
2. Western Major District	100,639	101,328	111,929	112,375	123,784
%	18.3	17.4	17.0	16.9	16.1
201 Reijola district	15,775	15,702	17,101	16,656	17,668
202 Munkkiniemi district	17,369	17,328	18,652	18,933	19,802
203 Haaga district	26,468	25,908	27,714	27,161	30,076
204 Pitäjänmäki district	14,948	15,465	18,240	18,578	20,692
205 Kaarela district	26,079	26,925	30,222	31,047	35,546
3. Central Major District	73,252	78,561	96,548	101,324	134,413
%	13.3	13.5	14.7	15.3	17.5
301 Kallio district	25,255	25,606	32,420	34,804	44,608
302 Alppiharju district	11,875	11,731	11,940	11,590	11,054
303 Vallila district	11,091	12,306	16,851	16,916	22,873
304 Pasila district	8,591	8,484	10,298	12,676	25,426
305 Vanhakaupunki district	16,440	20,434	25,039	25,338	30,453
4. Northern Major District	41,250	41,164	43,288	43,188	44,875
%	7.5	7.1	6.6	6.5	5.8
401 Maunula district	8,984	8,584	9,244	8,882	9,269
402 Länsi-Pakila district	6,403	6,587	7,001	7,073	6,146
403 Tuomarinkylä district	8,181	8,585	8,730	8,650	7,483
404 Oulunkylä district	14,145	13,634	14,666	14,904	18,873
405 Itä-Pakila district	3,537	3,774	3,647	3,679	3,104
5. North-Eastern Major District	83,842	92,690	100,305	99,750	112,510
%	15.2	15.9	15.3	15.0	14.7
501 Latokartano district	12,557	21,149	24,813	24,715	26,715
502 Pukinmäki district	9,176	8,292	8,786	8,583	11,389
503 Malmi district	26,023	27,947	29,211	29,694	40,019
504 Suutarila district	11,844	11,304	11,459	11,379	10,496
505 Puistola district	18,346	18,372	20,419	20,098	18,244
506 Jakomäki district	5,896	5,626	5,617	5,281	5,646
6. South-Eastern Major District	44,918	46,666	55,858	57,296	73,954
%	8.2	8.0	8.5	8.6	9.6
601 Kulosaari district	3,761	3,770	4,126	4,075	4,314
602 Herttoniemi district	24,574	26,423	30,271	30,500	35,856
603 Laajasalo district	16,583	16,473	21,461	22,721	33,783
7. Eastern Major District	90,355	103,227	112,869	113,201	127,341
%	16.4	17.7	17.2	17.0	16.6
701 Vartiokylä district	20,235	21,363	21,832	21,928	27,058
702 Myllypuro district	8,941	9,613	12,695	12,867	14,815
703 Mellunkylä district	35,932	36,425	39,381	39,616	39,968
704 Vuosaari district	25,247	35,826	38,961	38,790	45,501
8. Östersundom Major District	.	2,113	1,830	1,785	4,006
%	.	0.4	0.3	0.3	0.5
801 Östersundom district	.	2,113	1,830	1,785	4,006
Others	19,852	17,918	12,999	13,232	12,469
%	3.6	3.1	2.0	2.0	1.6
Inner Helsinki	167,721	173,899	210,135	215,128	255,527
Outer Helsinki	363,550	391,533	433,786	435,668	499,605

Helsinki's district division changed from 2013 on.

Source: Census lists (1980). Helsinki City's population register (1990). Statistics Finland (2000–2019) and City of Helsinki (2035).

	2005	2010	2015	2020	2022
All Helsinki residents	560,905	588,549	628,208	656,920	664,028
<i>Citizenship</i>					
Finnish	530,135	544,088	570,601	591,983	590,952
Other	30,770	44,461	57,607	64,937	73,076
Percentage of the entire population	5.5	7.6	9.2	9.9	11.0
Europe	17,541	24,651	31,902	31,353	33,913
EU countries	10,407	16,731	23,680	21,592	22,554
Estonia	4,867	8,481	12,834	10,852	10,419
Sweden	1,219	1,278	1,260	1,184	1,231
EU member state since the 2000s (other than Estonia)	562	1,691	2,540	3,180	3,662
Other northern or western European	291	349	387	1,970	2,038
Other European	6,843	7,571	7,835	7,791	9,321
Russia	5,240	6,008	6,252	5,780	6,715
Africa	4,612	6,294	7,142	7,527	8,338
North America	949	1,129	1,388	1,725	1,895
Latin America or Caribbean	601	979	1,233	1,533	1,722
Southeast or East Asia	2,571	4,333	6,198	8,221	9,614
South West or Central Asia	3,866	6,333	8,870	13,561	16,558
Australia or Oceania	188	234	282	341	355
No citizenship or citizenship unknown	442	508	592	676	681

Source: Statistics Finland.

2.5

Persons having received a Finnish citizenship
by mother tongue 2010–2022

	2010	2015	2019	2020	2021	2022
Total	884	1,931	2,293	1,810	1,563	2,417
<i>Mother tongue</i>						
Finnish	33	49	60	54	44	53
Swedish	6	6	22	21	21	24
Russian	316	419	489	335	299	516
Arabic	52	122	258	213	273	343
Somali	67	364	289	250	225	300
English	22	68	133	107	67	107
Estonian	35	60	118	75	58	99
Persian, Farsi	31	74	98	49	79	81
Vietnamese	20	22	64	35	41	81
Kurdish	42	126	69	59	34	72
Spanish	17	37	45	54	31	65
Nepali	7	47	52	60	31	63
Bengali	7	33	31	21	32	54
Turkish	23	25	50	24	19	42
Thai	8	18	27	30	23	34
Tagalog	6	9	36	20	13	27
Other language	192	452	452	403	273	456

Source: Statistics Finland.

2.6

Population by religious affiliation on 31 Dec 2000–2022

	2000	2005	2010	2015	2020	2022
Total	555,474	560,905	588,549	628,208	656,920	664,028
Evangelical Lutheran Church of Finland	402,454	388,276	365,523	351,029	330,660	316,231
Other Lutherans	681	631	98	121	97	81
Finnish Orthodox Church	8,545	9,069	9,350	9,415	8,938	8,672
Other Greek Orthodox	658	974	1,242	1,702	1,944	1,931
Jehovah's witnesses	1,512	1,590	1,667	1,662	1,485	1,372
Lutheran free churches of Finland	906	856	904	984	1,004	970
Roman Catholic Church in Finland	2,605	2,921	3,398	3,943	4,133	4,181
Adventist churches	271	253	240	215	201	177
Church of Jesus Christ of Latter-day Saints	401	416	417	483	430	392
Baptist congregations	113	110	96	90	75	64
Methodist churches	234	203	191	183	186	172
Jewish congregations	678	661	633	607	601	584
Islamic* congregations	544	2,059	3,872	5,152	8,169	9,128
Other	163	466	992	1,512	2,201	2,161
No religious affiliation	135,709	152,420	199,926	251,110	296,796	317,912

*Only registered congregations.

Source: Statistics Finland.

	All families							
	Total	Children in these	Married couples without children ²	Unmarried couples without children	Married couples, with children	Unmarried couples, with children	Mother and children	Father and children
Families, total³								
1995	131,082	115,826	38,343	20,844	42,189	7,411	19,928	2,367
2000	136,710	119,355	39,477	24,760	39,917	9,131	20,825	2,600
2005	137,776	114,924	42,195	26,387	36,741	9,429	20,353	2,671
2010	144,528	117,321	44,678	28,989	37,561	10,083	20,370	2,847
2011	146,113	118,343	44,913	29,709	37,901	10,335	20,384	2,871
2012	148,303	119,745	45,450	30,348	38,391	10,559	20,597	2,958
2013	150,602	121,664	45,731	31,304	38,925	10,887	20,726	3,029
2014	152,650	123,782	45,946	31,968	39,634	11,194	20,841	3,067
2015	154,753	125,858	46,094	32,732	40,214	11,503	21,030	3,180
2016	156,620	127,469	46,313	33,496	40,497	11,776	21,338	3,200
2017	158,063	129,541	46,759	33,506	40,934	11,930	21,662	3,272
2018	159,092	130,544	47,064	33,753	41,244	12,097	21,626	3,308
2019	160,469	131,315	47,575	34,232	41,399	12,246	21,588	3,429
2020	161,282	131,318	47,691	35,006	41,182	12,402	21,595	3,406
2021	160,797	131,327	47,290	34,999	40,926	12,845	21,286	3,451
2022	161,417	132,242	47,564	34,871	40,848	13,197	21,443	3,494
Families with at least one 0–17 year old child								
1995	57,073	93,423	.	.	34,813	6,891	14,036	1,333
2000	56,867	95,256	.	.	32,200	8,454	14,837	1,376
2005	55,208	93,072	.	.	30,079	8,779	14,865	1,485
2010	55,973	93,097	.	.	30,707	9,205	14,512	1,549
2011	56,410	93,761	.	.	30,989	9,364	14,510	1,547
2012	57,055	94,823	.	.	31,371	9,527	14,560	1,597
2013	57,806	96,394	.	.	31,812	9,815	14,597	1,582
2014	58,776	98,201	.	.	32,379	10,071	14,706	1,620
2015	59,877	100,148	.	.	32,990	10,299	14,873	1,715
2016	60,821	101,972	.	.	33,351	10,541	15,174	1,755
2017	61,819	104,080	.	.	33,836	10,714	15,458	1,811
2018	62,360	105,362	.	.	34,110	10,906	15,501	1,843
2019	62,972	106,633	.	.	34,392	11,089	15,565	1,926
2020	63,788	107,962	.	.	34,590	11,312	15,856	2,030
2021	64,035	108,315	.	.	34,481	11,755	15,728	2,071
2022	64,628	109,239	.	.	34,453	12,100	15,979	2,096
Families with at least one 0–6 year old child								
1995	30,287	41,149	.	.	18,572	5,086	6,350	279
2000	28,644	40,113	.	.	16,592	5,803	5,983	266
2005	26,623	35,974	.	.	15,413	5,462	5,469	279
2010	28,588	39,190	.	.	16,870	5,853	5,579	286
2011	29,356	40,238	.	.	17,280	6,122	5,652	302
2012	30,139	41,349	.	.	17,663	6,295	5,857	324
2013	30,981	42,547	.	.	18,131	6,559	5,965	326
2014	31,849	43,689	.	.	18,611	6,830	6,074	334
2015	32,604	44,566	.	.	18,998	7,072	6,165	369
2016	33,033	45,069	.	.	19,151	7,237	6,268	377
2017	33,368	45,296	.	.	19,233	7,381	6,382	372
2018	33,250	45,097	.	.	19,088	7,443	6,340	379
2019	33,141	44,579	.	.	18,947	7,518	6,278	398
2020	32,975	44,144	.	.	18,716	7,629	6,229	401
2021	32,459	43,399	.	.	18,228	7,911	5,943	377
2022	32,020	42,648	.	.	17,730	7,976	5,951	363

¹ At year-end 1990 and at turn of the year 1994/1995–2022/2023.² Also incl. registered couples of the same sex.³ Children regardless of age.

Source: Census (1990). Helsinki City's population register and Statistics Finland.

	Population Dec 31, 2022	Population change 2022 ¹	Surplus of births over deaths	Net migration		
				Total	In and out of Helsinki	Within Helsinki ²
Helsinki, total	664,028	5,571	247	5,425	5,425	0
<i>Major Districts</i>						
1. Southern	121,877	720	321	413	2,400	-1,987
101 Vironniemi district	12,984	190	20	169	338	-169
102 Ullanlinna district	24,374	-262	49	-313	390	-703
103 Kampinmalmi district	44,433	695	146	568	1,333	-765
104 Taka-Töölö district	15,343	90	11	76	377	-301
105 Lauttasaari district	24,743	7	95	-87	-38	-49
2. Western	112,375	330	-10	315	913	-598
201 Reijola district	16,656	-111	-49	-67	166	-233
202 Munkkiniemi district	18,933	89	-41	131	5	126
203 Haaga district	27,161	-451	-68	-388	285	-673
204 Pitäjänmäki district	18,578	256	46	205	188	17
205 Kaarela district	31,047	547	102	434	269	165
3. Central	101,324	2,684	75	2,592	2,411	181
301 Kallio district	34,804	1,189	-1	1,182	1,247	-65
302 Alppiharju district	11,590	-63	-27	-28	285	-313
303 Vallila district	16,916	145	57	82	280	-198
304 Pasila district	12,676	1,437	50	1,381	411	970
305 Vanhakaupunki district	25,338	-24	-4	-25	188	-213
4. Northern	43,188	215	-87	293	-202	495
401 Maunula district	8,882	-117	-39	-82	-53	-29
402 Länsi-Pakila district	7,073	20	-21	38	-73	111
403 Tuomarinkylä district	8,650	-37	14	-53	-89	36
404 Oulunkylä district	14,904	323	-48	372	6	366
405 Itä-Pakila district	3,679	26	7	18	7	11
5. North-Eastern	99,750	399	188	199	270	-71
501 Latokartano district	24,715	228	76	150	212	-62
502 Pukinmäki district	8,583	-139	-11	-128	49	-177
503 Malmi district	29,694	492	27	463	140	323
504 Suutarila district	11,379	53	15	38	-39	77
505 Puistola district	20,098	-51	87	-138	-17	-121
506 Jakomäki district	5,281	-184	-6	-186	-75	-111
6. South-Eastern	57,296	568	162	390	-60	450
601 Kulosaari district	4,075	23	4	15	-9	24
602 Herttoniemi district	30,500	-23	66	-91	-5	-86
603 Laajasalo district	22,721	568	92	466	-46	512
7. Eastern	113,201	348	-128	468	1,252	-784
701 Vartiokylä district	21,928	302	-51	356	262	94
702 Myllypuro district	12,867	46	-24	66	3	63
703 Mellunkylä district	39,616	-133	-96	-39	738	-777
704 Vuosaari district	38,790	133	43	85	249	-164
8. Östersundom	1,785	-24	-9	-15	-7	-8
801 Östersundom district	1,785	-24	-9	-15	-7	-8
Others	13,232	331	-265	770	-1,552	2,322
Inner Helsinki	215,128	3,285	252	3,024	5,017	-1,993
Outer Helsinki	435,668	1,955	260	1,631	1,960	-329

¹ Incl. corrections of population figure.² Data not available.

Source: Statistics Finland.

	Born alive		Boys		Out of wedlock	
	Number	Live birth rate, 0/00 ¹	Number	% ²	Number	% ²
Annual average						
1901–05	2,889	28.5	1,468	50.8	453	15.7
1906–10	3,558	28.8	1,831	51.5	603	16.9
1911–15	3,464	22.0	1,776	51.3	658	19.0
1916–20	2,703	15.0	1,393	51.5	385	14.2
1921–25	2,610	13.3	1,351	51.8	261	10.0
1926–30	2,652	12.2	1,341	50.6	237	8.9
1931–35	2,575	10.6	1,322	51.3	257	10.0
1936–40	3,722	13.6	1,916	51.5	375	10.1
1941–45	5,987	20.1	3,111	52.0	462	7.7
1946–50	7,723	22.4	3,969	51.4	485	6.3
1951–55	6,731	17.2	3,420	50.8	488	7.3
1956–60	7,505	17.3	3,868	51.5	491	6.5
1961–65	8,492	17.6	4,343	51.1	510	6.0
1966–70	8,389	15.9	4,274	50.9	569	6.8
1971–75	6,454	12.6	3,299	51.1	625	9.7
1976–80	5,994	12.3	3,114	52.0	828	13.8
1981–85	5,939	12.3	3,031	51.0	998	16.8
1986–90	6,110	12.5	3,129	51.2	1,553	25.4
1991–95	6,692	13.2	3,440	51.4	2,261	33.8
1996–2000	6,351	11.7	3,238	51.0	2,449	38.6
2001–2005	6,163	11.0	3,156	51.2	2,463	40.0
2006–2010	6,377	11.1	3,254	51.0	2,554	40.1
2011–2015	6,816	11.2	3,513	51.5	2,814	41.3
2016–2020	6,548	10.2	3,355	51.2	2,737	41.8
Annually						
2010	6,907	11.2	3,520	51.0	2,850	41.3
2011	7,016	11.2	3,654	52.1	2,977	42.4
2012	6,803	10.8	3,483	51.2	2,881	42.3
2013	6,566	10.3	3,322	50.6	2,750	41.9
2014	6,388	9.9	3,267	51.1	2,610	40.9
2015	6,332	9.7	3,221	50.9	2,658	42.0
2016	6,803	10.8	3,483	51.2	2,881	42.3
2017	6,566	10.3	3,322	50.6	2,750	41.9
2018	6,388	9.9	3,267	51.1	2,610	40.9
2019	6,332	9.7	3,221	50.9	2,658	42.0
2020	6,650	10.1	3,482	52.4	2,786	41.9
2021	7,082	10.8	3,605	50.9	3,224	45.5
2022	6,176	9.3	3,188	51.6	2,822	45.7

¹ Per 1.000 persons in the average population number.

² Of all live births.

Source: Statistics Finland and for 1986–93 Helsinki's population data system.

2.10

Deaths¹ in Helsinki in 1901–2022

	Men		Women		Total		Of which less than 1 year olds	
	Number	%	Number	%	Number	General death rate 0/00 ²	Total	Boys
Annual average								
1901–05	937	53,5	816	46,5	1,753	17.3	550	300
1906–10	1,077	53,1	953	47,0	2,030	16.4	556	302
1911–15	1,170	52,5	1,059	47,5	2,229	14.2	499	280
1916–20	1,642	57,6	1,209	42,4	2,851	15.9	313	167
1921–25	1,092	51,4	1,035	48,7	2,126	10.8	188	103
1926–30	1,373	51,2	1,310	48,8	2,683	12.4	176	94
1931–35	1,367	49,8	1,377	50,2	2,744	11.2	147	81
1936–40	1,940	54,4	1,630	45,7	3,569	13.1	181	104
1941–45	2,703	58,6	1,908	41,4	4,610	15.5	339	185
1946–50	1,989	51,1	1,902	48,9	3,891	11.3	342	192
1951–55	1,829	48,5	1,941	51,5	3,770	9.7	150	88
1956–60	1,986	47,6	2,184	52,4	4,169	9.6	140	77
1961–65	2,210	46,6	2,533	53,4	4,743	9.8	163	93
1966–70	2,499	48,4	2,663	51,6	5,162	9.8	124	67
1971–75	2,546	49,0	2,653	51,0	5,198	10.2	71	43
1976–80	2,479	47,3	2,761	52,7	5,240	10.7	46	26
1981–85	2,387	45,6	2,852	54,4	5,238	10.8	38	23
1986–90	2,471	44,1	3,127	55,9	5,598	11.4	34	19
1991–95	2,312	43,5	2,999	56,5	5,311	10.5	33	19
1996–2000	2,272	43,7	2,926	56,3	5,197	9.6	28	15
2001–2005	2,262	44,7	2,798	55,3	5,060	9.0	19	8
2006–2010	2,293	46,2	2,667	53,8	4,959	8.6	15	8
2011–2015	2,316	45,9	2,726	54,1	5,042	8.3	15	8
2016–2020	2,429	47.0	2,739	53.0	5,168	8.0	11	7
Annually								
2010	2,349	46.0	2,760	54.0	5,109	8.7	21	9
2015	2,356	45.9	2,779	54.1	5,135	8.2	10	5
2016	2,372	46.2	2,758	53.8	5,130	8.1	12	6
2017	2,380	47.2	2,662	52.8	5,042	7.9	8	7
2018	2,409	46.4	2,782	53.6	5,191	8.0	10	6
2019	2,415	47.2	2,703	52.8	5,118	7.9	9	6
2020	2,568	47.9	2,789	52.1	5,357	8.2	14	8
2021	2,622	47.3	2,926	52.7	5,548	8.4	9	4
2022	2,778	46.9	3,131	52.8	5,929	9.0	12	6

¹ 1950 or earlier including all those declared dead. ² Per 1,000 persons in the average population number.
Source: Statistics Finland and for 1986–93 Helsinki's population data system.

2.11

Life expectancy
(average expectation of remaining lifetime) 1991–2022

Age	1991–95			2001–05			2011–15			2022		
	Total	Men	Women	Total	Men	Women	Total	Men	Women	Total	Men	Women
0	75.8	71.5	79.3	78.2	74.4	81.3	80.7	77.5	83.3	81.1	78.3	83.6
10	66.3	62.0	69.8	68.6	64.8	71.7	70.9	67.7	73.6	71.3	68.6	73.8
20	56.5	52.2	59.9	58.7	55.0	61.8	61.0	57.8	63.7	61.5	58.8	63.9
30	46.9	42.9	50.2	49.0	45.4	52.0	51.3	48.2	53.9	51.7	49.1	54.0
40	37.6	33.8	40.6	39.5	36.1	42.2	41.6	38.7	44.1	42.1	39.5	44.3
50	28.8	25.4	31.4	30.5	27.3	33.0	32.3	29.5	34.5	32.7	30.3	34.7
60	20.6	17.7	22.5	22.2	19.4	24.1	23.7	21.3	25.5	23.9	21.8	25.6
70	13.5	11.3	14.5	14.7	12.5	15.9	16.0	14.1	17.2	15.9	14.2	17.1
80	7.8	6.7	8.1	8.4	7.1	8.9	9.1	8.0	9.7	9.0	8.0	9.6
85	5.6	5.0	5.8	6.0	5.0	6.3	6.4	5.6	6.7	6.3	5.5	6.7

Source: Statistics Finland and for 1986–93 Helsinki's population data system.

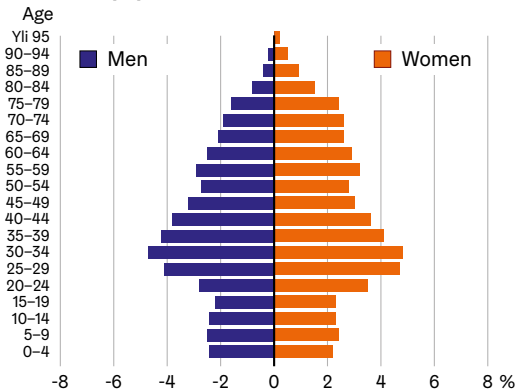
	1991–95	1996–2000	2001–05	2006–10	2011–15	2016–20	2021	2022
Migrated from¹	25,565	30,814	32,725	36,084	39,996	42,696	42,729	45,760
Helsinki Metropolitan Area	8,885	9,511	10,643	10,609	12,435	13,672	14,986	14,834
Rest of Uusimaa province	5,010	4,819	4,498	4,638	5,165	5,160	5,058	5,106
Rest of Finland	11,847	15,728	14,743	15,984	17,022	17,833	14,721	14,910
Abroad	3,626	3,329	4,292	6,380	7,005	7,324	7,964	10,910
Migrated to¹	20,539	25,930	32,700	32,405	33,758	38,195	42,732	40,335
Helsinki Metropolitan Area	9,663	10,833	13,559	12,767	13,541	16,067	18,399	17,581
Rest of Uusimaa province	4,476	5,331	6,006	5,724	5,170	5,524	7,119	6,199
Rest of Finland	7,509	9,651	11,695	12,289	12,564	12,685	13,457	12,044
Abroad	1,411	2,635	3,117	3,306	3,989	5,113	3,757	4,511
Net migration¹	5,026	4,883	25	3,679	6,239	4,501	-3	5,425
Helsinki Metropolitan Area	-779	-1,321	-2,915	-2,158	-1,107	-2,395	-3,413	-2,747
Rest of Uusimaa province	535	-512	-1,507	-1,086	-5	-364	-2,061	-1,093
Rest of Finland	4,338	6,077	3,049	3,695	4,458	5,148	1,264	2,866
Abroad	2,216	694	1,175	3,074	3,016	2,211	4,207	6,399

¹ Incl. area unknown.

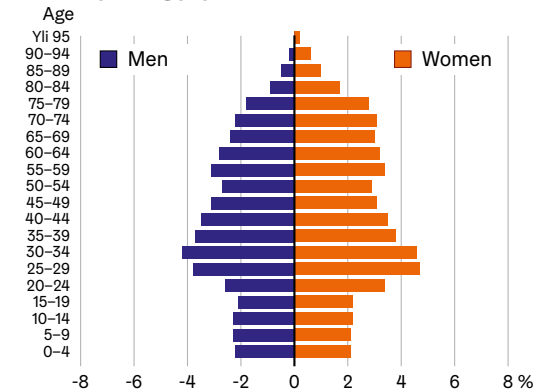
Source: Statistics Finland and for 1986–93 Helsinki's population data system.

Population by mother tongue and age 31.12.2022

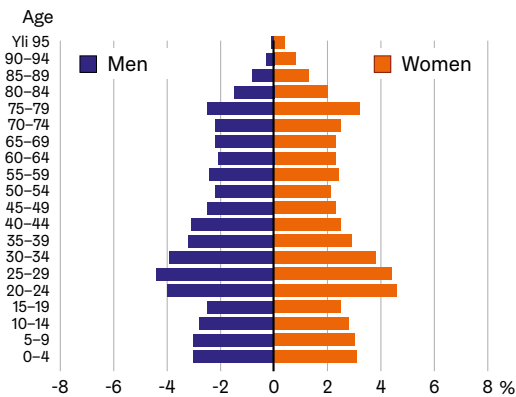
The whole population



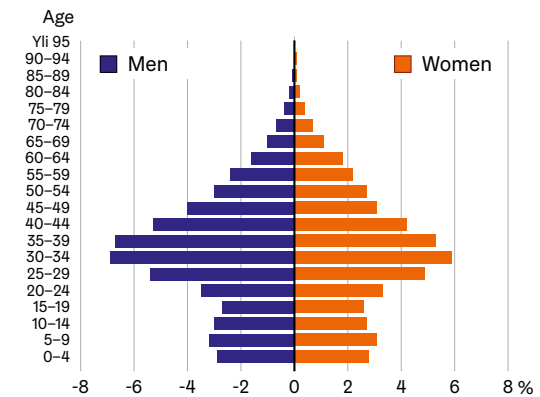
Finnish-speaking population¹



Swedish-speaking population



Population with a foreign mother tongue



¹ Incl. Sami-language residents.

Source: Statistics Finland.

Housing

List of diagrams and tables

3.1	Dwellings by type of building 1970–2022	24
3.2	Dwellings by tenure status: Helsinki 1950–2022. Helsinki Region, Tampere, Turku, Oulu and Finland 2022	25
3.3	Dwellings by size of dwelling (number of rooms) in 2000–2022	26
3.4	Housing standard by number of rooms 2000–2022.....	26
3.5	Indicators of level of housing in 2000–2022	27
3.6	Average rent of rented dwellings 2020 and 2022	27
3.7	Price index of dwellings in 2020–2022	28
3.8	Completed dwellings in Helsinki by type of building in 1985–2022 ¹	29
3.8	Completed dwellings in Helsinki by type of dwelling in 2000–2022	30

	Dwellings total ¹	Type of house				
		Total	Small houses		Blocks of flats	Other buildings
			detached houses	terraced houses		
Helsinki						
1970	189,734	18,634	15,444	3,190	167,430	3,060
1980	221,341	22,54	14,621	7,919	194,547	4,254
1990	259,033	32,833	19,346	13,487	220,376	5,746
2000	296,013	37,664	21,472	16,192	253,315	5,034
2005	313,695	40,85	23,211	17,639	268,212	4,633
2010	328,164	43,349	25,008	18,341	280,886	3,929
2011	331,485	43,682	25,193	18,489	284,323	3,480
2012	336,409	44,055	25,451	18,604	288,603	3,751
2013	342,303	45,015	26,137	18,878	293,209	4,079
2014	346,751	45,732	26,601	19,131	296,750	4,269
2015	350,314	46,137	26,837	19,300	299,895	4,282
2016	356,975	47,595	27,618	19,977	305,053	4,327
2017	361,866	48,034	27,872	20,162	309,440	4,392
2018	367,680	48,323	27,632	20,691	315,094	4,263
2019	371,295	48,429	27,587	20,842	318,643	4,223
2020	376,065	48,067	27,437	20,630	323,197	4,801
2021	382,153	48,376	27,631	20,745	328,961	4,816
2022	387,053	48,829	27,864	20,965	333,481	4,743
		%				
1970	100	9.8	8.1	1.7	88.2	1.6
1980	100	10.2	6.6	3.6	87.9	1.9
1990	100	12.7	7.5	5.2	85.1	2.2
2000	100	12.7	7.3	5.5	85.6	1.7
2005	100	13.0	7.4	5.6	85.5	1.5
2010	100	13.2	7.6	5.6	85.6	1.2
2011	100	13.2	7.6	5.6	85.8	1.0
2012	100	13.1	7.6	5.5	85.8	1.1
2013	100	13.2	7.6	5.5	85.7	1.2
2014	100	13.2	7.7	5.5	85.6	1.2
2015	100	13.2	7.7	5.5	85.6	1.2
2016	100	13.3	7.7	5.6	85.5	1.2
2017	100	13.3	7.7	5.6	85.5	1.2
2018	100	13.3	7.7	5.6	85.5	1.2
2019	100	13.2	7.6	5.6	85.7	1.1
2020	100	12.8	7.3	5.5	85.9	1.3
2021	100	12.7	7.2	5.4	86.1	1.3
2022	100	12.6	7.2	5.4	86.2	1.2
2022						
Rest of Helsinki Metropolitan Area	100	34.8	22.8	12.0	64.6	0.7
Helsinki Region	100	29.3	19.5	9.8	69.7	1.0
Tampere	100	22.0	12.6	9.4	76.4	1.6
Turku	100	23.4	11.9	11.5	75.0	1.6
Oulu	100	43.2	28.4	14.8	55.5	1.4
Finland, total	100	50.5	37.3	13.3	47.7	1.8

¹ Including dwellings whose type of house is unknown.

Source: Censuses and Statistics Finland's Area Data Base.

3.2

Dwellings by tenure status: Helsinki 1950–2022. Helsinki Region, Tampere, Turku, Oulu and Finland 2022

	All dwellings	Owner occupied	Rented	of which		Tenant-owned dwelling status	Other or unknown tenure
				<i>arava</i> social housing	other rented dwelling		
1950	105,883	25,748	79,744				391
1960	145,470	59,312	83,900				2,258
1970	189,734	81,618	102,079				6,037
1980	221,341	110,095	94,444				16,802
1990	259,033	141,785	98,670	42,803	55,867	..	22,893
2000	296,013	128,020	138,533	65,838	72,695	4,752	24,708
2005	313,695	141,165	141,277	69,855	71,422	6,300	24,953
2010 ¹	328,164	146,000	146,647	69,877	76,770	7,152	28,365
2015	350,314	148,302	162,215	69,794	92,421	9,000	30,797
2020	376,065	160,034	177,964	68,635	109,329	11,914	26,153
2022	387,053	159,649	184,827	65,227	119,600	12,472	30,105
	%						
1950	100	24.3	75.3				0.4
1960	100	40.8	57.7				1.6
1970	100	43.0	53.8				3.2
1980	100	49.7	42.7				7.6
1990	100	54.7	38.1	16.5	21.6	..	8.8
2000	100	43.2	46.8	22.2	24.6	1.6	8.3
2005	100	45.0	45.0	22.3	22.8	2.0	8.0
2010 ¹	100	44.5	44.7	21.3	23.4	2.2	8.6
2015	100	42.3	46.3	19.9	26.4	2.6	8.8
2020	100	42.6	47.3	18.3	29.1	3.2	7.0
2021	100	41.8	47.4	18.2	29.3	3.2	7.6
2022	100	41.3	47.8	16.9	30.9	3.2	7.8
2022							
Rest of Helsinki Metropolitan Area	100	48.8	40.3	14.0	26.4	4.2	6.8
Helsinki Region	100	47.7	41.3	14.4	26.9	3.5	7.5
Tampere	100	41.6	48.8	11.7	37.1	2.6	7.0
Turku	100	40.4	47.6	12.2	35.4	2.0	10.0
Oulu	100	49.9	41.4	11.4	30.0	1.5	7.2
Finland total	100	54.3	33.0	10.2	22.7	1.7	11.0

¹ Since 2009 statistics on *arava* and interest-subsidised dwellings account for those dwellings released from tenant income restrictions.

² In 2010 Statistics Finland adjusted the tenure status of *arava* and interest-subsidised dwellings.

³ Dwellings built using the state's short-term interest subsidy have been classified as "other rented dwellings".

Source: Censuses and Statistics Finland's dwelling statistics.

3.3

Dwellings by size of dwelling (number of rooms)
in 2000–2022

	All dwellings ¹	Number of rooms, excl. kitchen				
		1	2	3	4	5+
Helsinki						
2000	296,013	71,996	108,225	63,378	33,856	16,888
2005	313,695	74,262	114,330	67,671	36,798	18,558
2010	328,164	76,349	119,025	71,259	39,268	20,228
2015	350,314	80,348	127,182	77,020	42,411	21,694
2020	377 122	86,667	136,195	83,476	45,865	22,805
2022	387,053	90,068	139,134	86,358	47,504	23,354
2000	100	24.3	36.6	21.4	11.4	5.7
2005	100	23.7	36.4	21.6	11.7	5.9
2010	100	23.3	36.3	21.7	12.0	6.2
2015	100	22.9	36.3	22.0	12.1	6.2
2020	100	23.0	36.1	22.1	12.2	6.0
2022	100	23.3	36.0	22.3	12.3	6.0
2022						
Rest of Helsinki Metropolitan Area	100	14.7	30.9	24.8	17.5	11.9
Helsinki Region	100	18.2	32.4	23.2	15.5	10.6
Tampere	100	24.7	36.6	20.4	11.4	6.6
Turku	100	24.3	36.5	21.7	11.1	6.3
Oulu	100	17.2	31.6	21.5	15.3	14.3
Finland, total	100	15.8	30.0	22.1	17.8	14.1

¹Incl. dwellings whose number of rooms is unknown.

Source: Censuses and Statistics Finland's dwelling statistics.

3.4

Housing standard by number of rooms 2000–2022

	Dwelling house-holds total	Number of rooms, excl. kitchen						
		1	2	3	4	5	6	7+
Residents per dwelling								
2000	1.9	1.2	1.6	2.4	2.9	3.1	3.0	3.3
2005	1.9	1.2	1.5	2.3	2.9	3.0	3.0	3.3
2010	1.9	1.2	1.5	2.2	2.8	3.0	3.0	3.4
2015	1.9	1.2	1.5	2.3	2.8	3.0	3.0	3.1
2020	1.8	1.1	1.5	2.2	2.8	3.0	2.9	3.0
2022	1.8	1.1	1.5	2.2	2.8	3.0	2.9	2.9
Residents per 100 rooms								
2000	79	119	78	80	74	61	50	43
2005	76	115	75	76	72	61	49	43
2010	76	118	75	75	71	61	49	44
2015	76	118	77	76	71	60	49	45
2020	75	115	75	75	70	59	49	40
2022	74	114	74	74	70	59	48	39

Source: Censuses and Statistics Finland's statistics on dwelling stock.

3.5

Indicators of level of housing in 2000–2022

	2000	2005	2010	2015	2020	2022
Dwelling stock	296,013	313,695	328,164	350,314	376,065	387,053
Dwelling population	531,287	540,094	566,040	603,965	637,971	644,668
Average size of dwellings						
Rooms per dwelling, kitchen incl.						
Floor area per dwelling, m ²	61.8	62.3	63.0	63.3	63.1	62.9
Housing density						
Persons per room, kitchen incl.	62.3	63.0	63.7	63.6	63.6	63.5
Persons per room, kitchen excl.	0.79	0.76	0.75	0.76	0.76	0.74
Floor area per person, m ²	32.6	34.0	34.2	33.9	34.4	34.6
Persons per dwelling	1.91	1.85	1.86	1.88	1.85	1.84
Crowded housing						
Norm 4 ¹						
Dwelling households, % ²	12.4	9.8	10.3	10.8	9.9	9.4
Persons, % ³	23.3	19.2	19.8	20.9	19.4	19.4
Inhabitants in inadequately equipped dwellings						
Persons living in inadequately equipped dwellings	13,005	13,118	18,261	16,733	14,785	13,123
Percentage	2.4	2.4	3.2	2.8	2.3	2.0

¹ Norm 4: more than 1 person per room, when the kitchen is not reckoned as a room.

² Proportion of dwelling households.

³ Proportion of the population living in dwellings.

Source: Censuses. Statistics Finland's statistics on housing stock and housing conditions.

3.6

Average rent of rented dwellings 2020 and 2022

<i>Euro/m²/month</i>	Helsinki		Espoo	Vantaa	Tampere	Turku	Outer Helsinki region	Finland
	2021	2022	2022	2022	2022	2022	2022	2022
All dwellings	18.45	18.74	17.05	17.14	14.57	15.19	14.25	14.61
<i>Number of rooms</i>								
1	24.54	24.77	21.87	22.08	17.89	18.77	17.71	18.36
2	17.81	18.29	17.04	16.65	14.13	14.49	13.71	14.02
3+	15.38	15.73	15.14	15.24	13.11	12.79	11.76	12.95
Market-financed dwellings	21.48	21.78	18.96	18.58	15.39	15.91	15.15	15.83
<i>Number of rooms</i>								
1	26.69	26.83	23.60	23.64	19.00	19.65	18.36	19.82
2	20.14	20.48	18.52	17.81	14.73	14.90	14.30	14.92
3+	18.26	18.84	16.95	16.40	13.59	13.38	12.64	13.88
State-financed dwellings	13.29	13.44	13.66	13.86	12.93	12.59	11.58	12.11
<i>Number of rooms</i>								
1	15.65	15.98	16.51	16.03	14.34	14.32	14.03	13.56
2	13.55	13.78	13.92	13.93	13.01	12.77	11.88	12.04
3+	12.50	12.65	12.85	13.19	12.26	11.46	10.23	11.62
New rental contracts								
Market-financed dwellings	22.57	22.95	19.82	19.29	16.57	16.84	16.46	17.14
<i>Number of rooms</i>								
1	27.56	27.73	24.36	24.44	20.23	20.41	19.32	21.27
2	20.84	21.34	19.23	18.16	15.55	15.70	15.42	15.94
3+	19.47	20.01	17.86	16.95	14.85	14.21	14.08	15.12

Source: Statistics Finland's statistics on rents.

3.7

Price index of dwellings in 2020–2022

Year, quarter	Helsinki	Espoo and Kauniainen	Vantaa	Outer Helsinki Region	Tampere	Turku	Finland
<i>2020=100</i>							
2021	105.6	107.6	102.8	104.3	107.4	107.5	104.6
2022							
I	107.0	107.0	104.7	104.1	106.8	109.2	105.3
II	108.4	108.9	104.0	106.4	110.7	108.1	106.7
III	105.3	108.0	103.4	105.0	107.2	109.4	104.9
IV	102.0	106.0	99.2	101.8	104.8	103.3	101.7

Source: Statistics Finland's statistics on rents.

3.8

Completed dwellings in Helsinki by type of building in 1985–2022¹

	Type of building						
	Total	Detached houses	Detached terraced houses	Blocks of flats	Others	State financed total	Built by the city, total
Dwellings							
<i>Annual average</i>							
1985–1989	4,211	656	612	2,913	29	1,695	1,328
1990–1994	3,974	391	272	3,285	27	2,793	1,633
1995–1999	3,457	290	194	2,961	12	2,685	1,150
2000–2004	3,822	369	343	3,091	18	1,783	1,012
2005–2009	2,513	286	154	2,041	33	664	478
2010–2014	3,671	279	170	3,206	16	1,382	705
2015–2019	4,583	285	228	4,024	46	1,409	926
<i>Annually</i>							
2000	4,853	365	440	4,048	0	2,656	1,182
2005	2,698	366	190	2,003	139	660	513
2010	2,289	278	134	1,876	1	574	306
2011	2,881	259	233	2,386	4	899	748
2012	2,451	295	150	1,988	18	432	418
2013	2,245	230	62	1,952	1	614	403
2014	3,679	334	254	3,075	16	1,371	1,000
2015	3,718	281	187	3,247	3	823	522
2016	3,985	256	232	3,326	171	954	482
2017	4,520	248	171	4,094	7	1,502	838
2018	4,538	290	290	3,928	30	1,739	1,453
2019	6,156	350	259	5,526	21	2,027	1,334
2020	6,899	356	218	6,313	12	1,630	1,466
2021	6,815	315	150	6,289	61	1,347	928
2022	5,534	364	230	4,745	195	1,410	1,002
Housing, floor area, m²							
<i>Annual average</i>							
1985–1989	287,477	64,596	50,347	170,842	1,692	102,320	76,669
1990–1994	270,615	41,674	22,651	204,233	2,057	176,917	102,637
1995–1999	236,495	33,142	17,364	185,275	715	169,026	72,776
2000–2004	270,429	44,624	30,712	194,082	1,021	111,898	68,390
2005–2009	191,168	35,796	15,351	138,099	1,922	38,190	33,230
2010–2014	248,986	35,136	15,320	197,363	1,144	82,771	52,241
2015–2019	280,741	32,623	19,728	225 647	2,743	79,861	59,782
<i>Annually</i>							
2000	332,680	41,316	40,259	251,149	0	164,736	79,177
2005	200,208	46,791	17,784	127,767	7,866	34,585	32,905
2010	140,330	23,387	6,304	109,818	821	67,521	26,132
2011	239,687	34,955	14,076	190,622	34	47,017	30,037
2012	301,813	40,157	11,907	249,365	384	81,100	54,658
2013	296,490	36,006	21,079	236,362	3,043	69,925	76,047
2014	266,608	41,173	23,235	200,764	1,436	82,791	74,333
2015	243,619	33,179	16,721	193,375	344	49,985	32,684
2016	247,193	28,920	18,820	190,286	9,167	61,541	35,613
2017	273,537	29,019	14,559	227,728	2,231	85,069	57,485
2018	274,454	32,733	25,814	215,019	888	98,664	92,229
2019	364,900	39,265	22,724	301,826	1,085	110,657	80,900
2020	400,176	40,254	18,228	338,124	3,570	91,682	90,943
2021	370,322	35,374	11,545	320,850	2,553	70,425	54,203
2022	308,215	41,375	18,004	240,605	8,231	69,289	61,399

¹New dwellings and extensions, not changes in the purpose of use.
Source: City of Helsinki Executive Office.

3.9

Completed dwellings in Helsinki by type of dwelling in 2000–2022

	Dwellings total	1 room	2 rooms	3 rooms	4 rooms	5 rooms	6 rooms	Average size, m ²
New dwellings and extensions to dwellings								
2000	4,853	629	1,875	1,170	856	280	43	68.2
2005	2,697	344	966	632	510	180	65	74.2
2006	2,289	367	832	492	406	141	51	71.4
2007	2,881	520	804	734	575	184	64	74.8
2008	2,451	202	842	712	502	129	64	81.0
2009	2,245	202	688	679	446	162	68	79.4
2010	2,059	411	747	500	246	122	33	68.2
2011	3,656	580	1,495	922	447	158	54	65.7
2012	4,643	885	1,796	1,183	540	165	74	65.0
2013	4,320	681	1,587	1,142	668	197	45	68.6
2014	3,679	592	1,129	1,014	672	224	48	72.5
2015	3,718	655	1,421	997	454	149	42	65.5
2016	3,985	833	1,360	987	615	152	38	62.0
2017	4,520	816	1,943	1,071	525	122	43	60.5
2018	4,538	1,015	1,569	1,064	634	227	29	60.5
2019	6,156	1,551	1,958	1,591	818	207	31	59.3
2020	6,899	1,813	2,211	1,654	919	254	48	58.0
2021	6,815	2,090	2,120	1,598	791	187	29	54.3
2022	5,534	1,677	1,571	1,264	786	208	28	55.7
Changed principal use								
2000	245	37	144	38	23	1	2	61.2
2005	156	67	57	13	7	9	3	59.8
2006	208	44	91	34	25	12	2	73.3
2007	427	128	169	81	36	9	4	68.4
2008	336	94	104	79	28	22	9	81.4
2009	267	82	68	60	33	14	10	87.9
2010	202	58	70	37	23	5	9	79.5
2011	426	114	195	78	29	5	5	62.0
2012	532	188	211	82	35	13	3	56.7
2013	236	72	108	33	14	4	5	60.4
2014	306	122	105	49	23	5	2	62.1
2015	341	120	130	54	18	17	2	64.0
2016	410	164	138	63	20	12	13	60.9
2017	370	188	114	43	18	2	5	53.6
2018	263	140	75	21	19	5	3	51.8
2019	580	285	184	74	19	13	5	52.4
2020	381	141	101	94	31	6	8	58.2
2021	290	80	132	47	15	2	14	75.6
2022	513	104	230	93	76	7	9	69.5

Source: City of Helsinki Executive Office.

Transport and Tourism

List of diagrams and tables

4.1	Public transport in Helsinki 2010–2022	32
4.2	Motor vehicles registered in Helsinki on 31 Dec. 1995–2022.....	32
4.3	Road traffic accidents reported to the police: Helsinki 1995–2022 Espoo, Vantaa, Tampere, Turku, Oulu and Finland overall 2022.....	33
4.4	Hotels and overnight stays in Helsinki 2000–2022	33
4.5	Driving licences 2000–2022	34

4.1

Public transport in Helsinki 2010–2022

	2010	2015	2020	2021	2022
Helsinki City Transport					
Trams	93	91	122	123	125
Metro coaches ¹	90	90	45	45	50
<i>Seat kilometres, 1,000</i>					
Trams	540,000	594,800	751,300	728,000	691,000
Metro	2,038,000	2,165,500	3,430,200	3,256,700	3,136,000
<i>Trips 1,000</i>					
Trams	54,496	55,230	34,900	31,500	41,800
Metro	57,091	62,128	60,400	56,000	69,900
<i>Trips on average per service day</i>					
Trams	151,378	153,417	95,616	86,301	114,520
Metro	158,586	172,578	165,479	165,479	191,596
Tendered bus services provided for Helsinki Regional Transport Authority HSL (Services within Helsinki)					
Trips	86,200	84,987	45,400	43,239	53,183

¹ The concept of "metro train unit" has changed with the introduction of new metro trains. The new trains form a single integrated space.

Source: Helsinki Regional Transport Authority HSL.

4.2

Motor vehicles registered in Helsinki on 31 Dec. 1995–2022

	1995	2000	2005	2010	2015	2020	2022
Cars	157,544	186,452	204,589	232,515	253,528	276,910	285,052
of which in professional use	1,214	1,080	1,051	1,167	1,105	1,926	2,113
Lorries/trucks	3,429	5,100	5,893	7,380	9,350	10,177	10,430
Vans	14,974	16,957	19,557	24,303	30,915	35,855	37,210
Buses	930	1,626	1,458	1,583	1,650	2,140	2,531
Special cars	1,388	998	643	510	484	465	462
Vehicles total	178,265	211,133	232,140	266,291	295,927	325,547	335,685
per 1,000 inhabitants	340	380	414	452	471	498	510
of which							
cars	300	336	365	395	404	404	433
Motor cycles	5,534	7,650	11,224	15,216	16,994	18,359	18,909
Motor vehicles total	183,799	218,783	243,364	281,507	312,921	434,906	354,954

Source: Statistics Finland.

4.3

Road traffic accidents reported to the police: Helsinki 1995–2022, Espoo, Vantaa, Tampere, Turku, Oulu and Finland overall 2022

	Accidents leading to casualties		Victims			
	Total	Per 1,000 inhabitants	Killed	Injured	Total	Per 1,000 inhabitants
Helsinki						
1995	812	1.5	7	987	994	1.9
2000	703	1.3	16	867	883	1.5
2005	552	1.0	9	721	730	1.3
2010	545	0.9	5	669	674	1.1
2015	383	0.6	12	443	455	0.7
2020	202	0	8	352	360	1
2022	242	0	5	295	300	1
Espoo	80	0	2	89	91	0
Vantaa	124	0	4	157	161	1
Tampere	78	0	6	94	100	0
Turku	104	1	3	111	114	1
Oulu	54	0	5	63	68	0
Finland, total	3,076	1	196	3,794	3,990	1

Source: Liikenneturva. Statistics Finland. Transport and tourism. Road traffic accidents.

4.4

Hotels and overnight stays in Helsinki 2000–2022

	2000	2010	2015	2020	2022
Accommodation establishments on 1 Jan.	60	63	60	76	78
of which hotels	47	55	54	67	71
Rooms	7,577	8,843	9,292	12,150	13,266
Beds	14,580	17,605	17,993	24,128	26,328
Helsinki's proportion of the capacity of accommodation establishments	10	11	11	14	15
of the hotel capacity, % ¹	12	14	15	18	19
Clients	1,430,256	1,821,799	2,065,596	916,901	2,150,459
Rooms	7,262	8,650	9,192	11,722	13,950
Beds	13,758	16,922	17,492	22,766	25,575
Utilisation rate					
percentage of room capacity	68	67	70	35	52
Overnight stays, total	2,604,647	3,187,136	3,461,958	1,616,635	3,526,834
of which					
foreign nationals, %	58.0	53.6	53.2	30.6	41.5

¹ Number of beds.

Source: Statistics Finland.

4.5

Driving licences 1995–2022

	1995	2000	2005	2010	2015	2020	2022
Valid driving licences, total	288,703	321,597	335,758	358,572	373,505	390,882	393,578
Men	156,773	172,287	178,100	188,214	194,685	202,804	203,814
Women	131,930	149,310	157,658	170,358	178,820	188,078	189,764
% of Finnish driving licenses	9.8	10.2	10.4	10.0	10.1	10.4	10.4

Source: Traficom.

Health care

List of diagrams and tables

5.1	Persons having received health care services provided by the City of Helsinki, 2000–2020	36
5.2	Non-hospital health care services provided by Helsinki City (including outsourced services) 2010–2022	37
5.3	Helsinki residents having received reimbursements of the fees charged by doctors practising privately 2022.....	38
5.4	Use of private-sector health care services reimbursed by the National Health Insurance 2005–2022.....	38
5.5	National disability pensions by main group of disease 31 Dec. 2022.....	39
5.6	Deaths by cause of death ¹ (54-class) in 2021.....	40

5.1

Persons having received health care services provided by the City of Helsinki, 2000–2020

	2000	2005	2010	2015	2020	Percentage of the population 2020
Helsinki residents						
Health care total	418,616	417,599	437,503	457,571	512,804	78.1
Outpatient primary health care	415,789	415,675	436,645	457,083	512,537	78.0
Inpatient care	66,951	62,803	58,647	49,250	46,539	7.1
Primary health care	375,589	376,960	407,230	423,776	474,587	72.2
Outpatient primary health care	372,815	374,962	405,912	423,529	474,336	72.2
Inpatient care	14,930	13,525	15,419	10,439	9,501	1.4
Specialised health care total	188,968	172,984	187,075	207,590	258,173	39.3
Outpatient primary health care	185,882	169,969	184,479	206,127	257,263	39.2
Inpatient care	59,100	55,881	49,237	45,649	42,882	6.5
Specialised somatic healthcare	175,959	160,175	175,968	192,262	240,006	36.5
Outpatient primary health care	172,893	157,262	173,478	190,815	239,122	36.4
Inpatient care	54,224	51,741	46,083	43,433	40,625	6.2
Specialised psychiatric health care	21,430	20,230	20,832	29,083	37,105	5.6
Outpatient primary health care	21,162	19,952	20,580	28,932	36,854	5.6
Inpatient care	4,313	3,865	3,663	2,748	2,776	0.4
Non-Helsinki residents						
Total health care	11,348	14,774	25,696	33,888	25,728	
Outpatient primary health care	11,154	14,750	25,661	33,860	25,683	
Inpatient care	75	104	267	292	112	
Primary health care	10,722	14,289	24,618	31,800	24,859	
Outpatient primary health care	10,675	14,270	24,531	31,791	24,841	
Inpatient care	66	38	168	65	60	
Specialised health care total	559	698	1,689	3,146	1,387	
Outpatient primary health care	551	694	1,661	3,110	1,351	
Inpatient care	9	66	101	244	56	
Specialised somatic health care	435	294	1,158	2,165	537	
Outpatient primary health care	435	294	1,158	2,138	534	
Inpatient care	–	–	–	201	11	
Specialised psychiatric health care	125	412	596	1,114	865	
Outpatient primary health care	117	408	568	1,104	832	
Inpatient care	9	66	101	43	45	

Earlier, neurological rehabilitation was included in basic health care, in 2015 in somatic special health care.

Note: The number of people having received care includes all those different persons (by identity number) that received care in the years 2000–2016 at Helsinki City health care facilities or at those of the Hospital District of Helsinki and Uusimaa. One and the same person may have consulted several different services during any given year, but they have been counted only once for each line.

Source: Social Services and Health Care Sector.

5.2

Non-hospital health care services provided by Helsinki City (including outsourced services) 2010–2022

	2010	2015	2019	2022
Helsinki residents having received outpatient health care				
Total	436,492	456,991	485,857	..
Primary health care	405,930	423,524	440,938	..
Outpatient medical care	293,590	299,342	324,452	500,219
Public health centre emergency clinics	76,530	74,742	1,901	62,369
Maternity and child health clinics	51,929	64,569	68,671	61,232
Home care	17,043	17,865	15,455	12,555
Oral,health	154,534	179,956	182,513	146,952
Other primary health care	92,897	117,164	131,639	..
Specialised medical care	184,130	205,968	257,689	..
Specialised somatic medical care	173,251	190,775	240,393	31,992
Specialised psychiatric medical care	20,420	28,762	35,977	19,225
Helsinki residents' outpatient consultations and treatment visits				
Total	5,099,551	6,902,146	7,253,408	8,485,930
Primary health care	4,245,486	5,780,001	5,901,341	7,176,397
Outpatient medical care	1,146,772	1,501,233	1,674,490	2,461,957
Public health centre emergency clinics	119,481	124,671	2,366	85,010
Maternity and child health clinics	230,589	328,996	335,338	220,387
Home,care	2,042,287	2,846,122	2,911,472	3,607,877
Oral health	448,828	513,162	476,739	399,281
Other primary health care	257,529	466,123	500,936	465,688
Specialised medical care	854,065	1,122,145	1,352,067	1,307,533
Specialised somatic medical care	625,180	781,047	965,380	1,099,223
Specialised psychiatric medical care	228,885	341,098	386,687	325,312
Non-resident.outpatient consultations and treatment visits in Helsinki				
Total	54,546	79,791	81,277	153,823
Primary health care	51,170	73,117	74,086	139,322
Outpatient medical care	7,383	14,521	22,319	62,345
Public health centre emergency clinics	7,372	9,511	225	644
Maternity and child health clinics	1,220	3,980	5,322	14,100
Home care	1,075	1,634	1,594	7,175
Oral health	12,523	17,267	14,085	24,339
Other primary health care	21,597	26,209	30,541	33,094
Specialised medical care	3,376	6,674	7,191	14,501
Specialised somatic medical care	1,747	3,152	1,934	7,798
Specialised psychiatric medical care	1,629	3,522	5,257	10,127

Source: Social Services and Health Care Sector.

5.3

Helsinki residents having received reimbursements of the fees charged by doctors practising privately 2022

Age	Private GPs or specialists		Private dental care	
	Persons	% of the population	Persons	% of the population
0–14	28,432	30.1	1,737	1.8
15–24	19,300	26.8	3,978	5.5
25–44	53,064	23.5	34,757	15.4
45–64	47,072	30.4	47,014	30.4
65+	52,544	44.8	49,197	42.0
Total	200,412	30.2	136,683	20.6

Source: Kela – The Social Insurance Institution of Finland. Kelasto reports.

5.4

Use of private-sector health care services reimbursed by the National Health Insurance 2005–2022

	2005	2010	2015	2020	2021	2022
Population ¹	560,625	588,549	628,208	656,920	658,457	664,028
Doctors' fees						
Number of visits, 1,000	525	557	543	466	500	548
Reimbursements, 1,000 euro ²	16,439	15,680	13,157	8,652	9,031	9,212
per inhabitant, euro ²	29.32	26.64	20.94	13.17	13.72	13.87
per visit, euro ²	31.33	28.15	24.23	18.57	18.06	16.81
Dentists' fees						
Number of visits, 1,000	409	357	337	285	251	305
Reimbursements, 1,000 euro ²	27,652	25,291	14,848	6,751	6,176	6,520
per inhabitant, euro ²	49.32	42.97	23.64	10.28	9.38	9.82
per visit, euro ²	67.61	70.94	44.06	23.68	24.60	21.38
Examination and treatment						
Decuctible visits, 1,000	188	240	443	364	436	465
Reimbursements, 1,000 euro ²	16,037	15,900	12,067	6,955	12,890	13,520
per inhabitant, euro ²	28.61	27.02	19.21	10.59	19.58	20.36
per visit, euro ²	85.30	66.25	27.24	19.10	29.56	29.08
Travel						
Single journeys, 1,000	222	329	347	245	252	245
Reimbursements, 1,000 euro ²	16,030	20,260	19,913	14,620	15,318	13,442
per inhabitant, euro ²	28.59	34.42	31.70	22.26	23.26	20.24
per visit, euro ²	72.32	61.58	57.39	59.67	60.79	54.87

¹ Population at year-end from Kela – the Social Insurance Institution of Finland's database.

² Based on rates in 2022.

Source: Kela – The Social Insurance Institution of Finland.

5.5

National disability pensions by main group of disease
31 Dec. 2022

	Helsinki		Finland	
	<i>All disability pensions</i>		<i>All disability pensions</i>	
	<i>Number</i>	<i>%</i>	<i>Number</i>	<i>%</i>
Main disease groups altogether	14 956	100	180 819	100
I Infectious or parasitic diseases	53	0.4	276	0.2
II Tumours	392	2.6	4,810	2.7
IV Diseases of internal secretion, nutrition or metabolism	189	1.3	2,325	1.3
V Disorders of mental health and behavior	9,358	62.6	98,787	54.6
VI Diseases of the nervous system	1,239	8.3	15,960	8.8
VII Diseases of the eye and its surrounding structures	188	1.3	1,834	1.0
IX Diseases of the cardio-vascular system	680	4.5	8,424	4.7
X Diseases of the respiratory system	97	0.6	1,382	0.8
XI Diseases of the gastro-intestinal system	66	0.4	1,032	0.6
XIII Diseases of, the musculo-skeletal and articular systems	1,504	10.1	31,326	17.3
XVII Congenital malformations, chromosome abnormalities, etc.	393	2.6	4,764	2.6
XIX Injuries, poisonings or consequences of certain other external impacts and articular systems	601	4.0	7,170	4.0
Others	196	1.3	2,729	1.5

Source: Joint statistics of Kela – The Social Insurance Institution of Finland – and the Finnish Centre for Pensions.

5.6

Deaths by cause of death¹ (54-class) in 2021

	Persons deceased		Per 10,000 inhabitants	
	Total	Men %	Total	
			Helsinki	Finland
Total	5,532	47.2	84.1	104.0
Infectious or parasitic diseases	249	56.2	3.8	0.4
Tumours	1,346	47.9	20.5	24.5
Diseases of internal secretion. nutrition or metabolism	90	56.7	1.4	1.6
Dementia, Alzheimer's disease	1,054	30.5	16.0	20.7
Other diseases of the nervous and sensory system	205	51.7	3.1	3.8
Diseases of the cardio-vascular system ²	1,533	49.2	23.3	33.9
Diseases of the respiratory system	195	51.3	3.0	3.2
Diseases of the gastro-intestinal system ²	97	45.4	1.5	2.5
Urological and venereal diseases	11	27.3	0.2	0.4
Congenital malformations. chromosome abnormalities	15	40.0	0.2	0.3
Other diseases ²	77	42.9	1.2	1.1
Unknown or ill-defined causes of death	73	64.4	1.1	0.5
Alcohol-related diseases and accidental alcohol poisoning	208	74.5	3.2	3.0
Accidents and violence ²	306	59.5	4.7	5.8
No death certificate	73	30.1	1.1	0.6

¹ ICD-10 classification of causes of death.

² Except alcohol-related.

Source: Statistics Finland.

Social welfare

List of diagrams and tables

6.1	Child welfare 1995–2021.....	42
6.2	Benefits for families with children 2005–2022.....	42
6.3	Pensioners in the Helsinki Region, Tampere, Turku, Oulu and Finland 2022.....	43
6.4	Recipients of pensions in Helsinki on 31 Dec. 2000–2022.....	43

6.1

Child welfare 1995–2021

	1995	2000	2005	2010	2015	2020	2021
Child welfare clients during the year	5,577	7,278	7,734	10,022	19,125	6,601	6,618
of whom							
Receiving community care	4,578	6,276	6,969	9,356	18,085	5,574	4,386
Placements	1,917	2,326	2,431	2,474	2,084	2,106	1,853
Placed with an emergency care order and taken into care	1,296	1,603	1,909	1,923	1,777	1,775	1,368
of whom placed with an emergency care order	179	222	329	435	432	599	558
In residential care	..	1,337	1,478	1,511	972	1,031	942
In foster care	..	1,041	999	1,101	1,052	1,096	877
In professional family homes	..	116	87	117	159	193	146
Children aged 0–17 in child welfare services, as % of total population of same age	5.1	6.4	6.9	8.3	17.5	5.1	4.9
Receiving community care	4.1	5.5	6.1	8.3	16.5	4.2	3.9
Placed	1.8	2.1	2.2	2.2	1.8	1.7	1.7
Placed with an emergency care order and taken into care	1.3	1.5	1.8	1.8	1.5	1.5	1.2
Young people aged 18–20 in child welfare services, as % of total population of same age	3.8	5.0	5.8	6.2	7.0	3.7	3.6
Receiving community care	3.5	4.2	5.5	6.2	7.0	2.5	..
Placed	1.1	1.4	1.6	1.6	1.4	0.9	..
Placed with an emergency care order and taken into care	0.5	0.8	1.0	0.8	1.0	0.6	..

¹Since a new social care act came into effect on 1 April 2015, child protection clients have decreased.

Source: Social Services and Health Care Division.

6.2

Benefits for families with children 2005–2022

	2005	2010	2015	2020	2022
Child benefits					
Families receiving child benefits	52,950	56,955	60,834	64,320	65,047
<i>Number of children in family</i>					
1	26,831	29,250	30,691	31,134	31,427
2	19,185	20,421	22,341	24,838	25,249
3	5,391	5,574	5,910	6,250	6,233
4	1,046	1,094	1,280	1,471	1,505
5–	497	616	612	624	552
Children conferring entitlement to child benefit¹	88,362	94,167	101,104	108,355	109,638
Child benefits paid €1,000	123,401	1,174	2129,919	143,160	157,213
Recipients (families) of maternity grants	5,879	6,726	6,990	6,935	6,029
Total value of maternity grants, 1,000 euro ³	1,137	1,174	1,239	1,524	1,365
of which value of maternity pack	773	853	925	1,099	1,010

¹ Including children in institutions.

² Due to a change in the legislation on child benefit, the amount of the benefit decreased by 8.1% as of January 2015.

³ Nominal value.

Source: Kela – The Social Insurance Institution of Finland. Kelasto reports.

6.3

Pensioners in the Helsinki Region, Tampere, Turku, Oulu and Finland 2022

	All pension recipients	Old-age pension	Disability pension	Survivors' pension
<i>Total</i>				
Helsinki Metropolitan area	229,098	212,706	16,478	29,610
Rest of Helsinki Region	76,590	70,713	5,901	10,601
Helsinki Region	305,688	283,419	22,379	40,211
Tampere	54,786	50,098	4,711	7,527
Turku	46,508	42,740	3,793	6,633
Oulu	43,679	38,850	4,848	5,869
Finland, total	1,518,036	1,397,996	120,169	227,232

Source: Finnish Centre for Pensions

6.4

Recipients of pensions in Helsinki on 31 Dec. 2000–2022

	2000	2005	2010	2015	2020	2022
Recipients of pensions in their own right	108,311	111,622	120,447	128,302	138,854	138,541
of which						
Recipients on statutory earnings-related pension	99,842	105,303	114,034	121,207	130,962	130,845
Recipients of national pension ¹	88,415	52,713	38,148	36,389	37,793	36,398
Old-age pension	80,210	82,676	95,301	109,457	117,680	124,013
Disability pension	22,375	21,897	21,355	18,269	10,606	14,956
Unemployment pension	3,977	3,634	1,907	–	–	–
Part-time pension	3,231	4,039	2,940	1,223	63	8
Percentage of residents having received pensions in their own right						
All recipients, aged 16 or older	23.2	23.5	23.9	24.0	24.3	24.4
Aged 55–64, including part-time pensions	42.1	36.6	34.2	25.0	24.0	23.1
Aged 55–64, without part-time pensions	36.6	31.0	30.4	23.5	24.0	23.1
Recipients of old-age pensions, % of aged 16 or older	17.2	17.4	18.9	20.5	21.5	21.9
Recipients of disability pensions, % of aged 16–64	5.7	5.5	5.1	4.2	3.6	3.3
Average pension in one's own right 31.12. euros/month	1,225	1,454,	1,704	2,008	2,060	2,241
Other, national old agedisability and unemployment pension benefits						
Child increase	–	–	877	874	715	650
Front-veteran's supplement	–	–	4,834	2,045	583	293
Recipients of survivors' pensions						
Surviving spouses	22,225	21,720	20,631	19,234	15,834	15,283
Children	2,622	2,409	2,186	1,811	1,374	1,311

¹ With effect from 1 January 2001. the cut national pensions and spouses supplement were discontinued.

Source: Finnish Centre for Pensions and The Social Insurance Institution of Finland. Statistical Yearbook of Pensioners in Finland.

Education

List of diagrams and tables

7.1	Children receiving early childhood education and care on 31 Dec. 2000–2022	46
7.2	Comprehensive schools and general upper secondary schools 2015–2022	47
7.3	Students and degrees at polytechnics in Helsinki Metropolitan Area 2022	47
7.4	Students and degrees at universities in Helsinki Metropolitan Area in 2022	48
7.5	Numbers of students at various levels of education in Helsinki 2000–2021	48
7.6	Population 15 years of age and over by educational level and age 2000–2021	49

	2000	2005	2010	2015	2020	2022
Day care in municipal day-care centres						
Municipal day-care centres	336	282	286	323	341	343
Children in day care, total 31. Dec	19,061	16,651	19,289	23,373	26,599	26,835
Children aged under 3	2,994	2,977	3,820	4,529	5,316	6,490
Children aged 3–6	15,376	13,607	15,431	18,791	21,218	20,275
Children aged 7	691	67	38	53	65	70
as % of total population of same age						
% of 1–2 year-olds	26.0	27.0	31.3	33.7	43.5	50.4
% of 3–6 year-olds	67.3	67.9	72.4	75.0	81.6	83.3
Day care in municipal family day care						
Children in day care, total 31. Dec	2,207	1,775	1,415	1,138	628	473
Children aged under 3	877	770	632	517	304	272
Children aged 3–6	1,214	947	761	618	319	199
Children aged 7	116	58	22	3	0	0
as % of total population of same age						
% of 1–2 year-olds	7.5	6.9	5.1	3.8	2.5	2.1
% of 3–6 year-olds	5.3	4.7	3.6	2.5	1.2	0.8
Private early childhood education and care with contract of purchase						
Private day-care centres with contract of purchase	52	42	39	10	–	–
Children from Helsinki in care	1,348	1,117	1,007	308	205	161
as % of children aged 1–6	3.9	3.6	3.0	0.8	0.5	0.4
Private early childhood education and care¹						
Private day-care centres	116	100	109	118	122	118
Places in private day-care centres	3,120	2,768	2,926	2,998	–	–

¹ Including private day-care centres with contract of purchase.

Source: Education Division.

7.2

Comprehensive schools and general upper secondary schools 2015–2022

	2015	2018	2019	2020	2022
All schools in Helsinki	178	165	165	145	137
City-owned schools	129	116	116	117	117
of which					
City's Finnish-language schools	110	99	99	100	100
Comprehensive schools	98	87	87	88	88
Upper secondary general schools	11	11	11	11	11
Upper secondary general schools for adults	1	1	1	1	1
City's Swedish-language schools	19	17	17	17	17
Comprehensive schools	16	14	14	14	14
Upper secondary general schools	3	3	3	3	3
State schools	11	11	11	6	6
Comprehensive schools and upper secondary general schools	11	11	11	6	6
Private schools	12	12	12	8	12
Comprehensive schools and upper secondary general schools	10	10	10	6	12
Upper secondary general schools for adults	2	2	2	2	2

Source: Education Division.

7.3

Students and degrees at polytechnics in Helsinki Metropolitan Area 2022

	Students		Degrees	
	<i>New</i>	<i>All</i>	<i>Polytechnic bachelor's degree</i>	<i>Higher polytechnic degree</i>
Arcada University of Applied Sciences (primarily Swedish-speaking)	736	2,732	513	66
Diaconia University of Applied Sciences (Diak)	1,016	3,235	716	60
Haaga-Helia University of Applied Sciences	3,117	10,032	2,050	354
Humak University of Applied Sciences	758	2,224	348	90
Laurea University of Applied Sciences	3,567	9,654	1,944	320
Metropolia University of Applied Sciences	4,954	17,107	3,045	508

Source: Statistics Finland.

7.4

Students and degrees at universities in Helsinki Metropolitan Area in 2022

	Students		Degrees	
	<i>New</i>	<i>All</i>	<i>Lower and higher university level¹</i>	<i>Doctorate level</i>
University of Helsinki	4,406	31,004	5,143	437
Aalto University	3,221	19,667	3,340	195
Hanken School of Economics	488	2,647	568	13
University of the Arts ²	334	1,985	447	18
National Defence University	317	1,061	294	1

¹ Also including physicians' specialisation diplomas.

² The Theatre Academy, Academy of Fine Arts and Sibelius Academy merged into the University of the Arts in 2013.

Source: Statistics Finland.

7.5

Numbers of students at various levels of education in Helsinki 2000–2021

	Comprehensive school education	General upper secondary school	Vocational education	Polytechnic education	University education
2000	49,591	17,411	16,492	16,889	45,439
2005	49,485	16,408	30,406	19,573	47,449
2010	46,322	16,838	32,614	21,384	45,900
2015	48,719	15,867	43,370	22,665	42,250
2016	49,779	15,788	44,003	23,093	41,962
2017	51,199	15,909	43,164	23,952	41,240
2018	52,946	15,893	42,633	21,783	39,747
2019	55,833	16,684	45,186	21,976	38,224
2020	55,688	17,094	40,108	23,024	38,190
2021	55,770	17,281	42,111	23,435	35,928

Source: Statistics Finland.

7.6

Population 15 years of age and over by educational level and age 2000–2021

Year	Total	of whom women	Age				
			15–24	25–34	35–44	45–64	65–
Population aged 15 or older							
2000	471,692	257,019	71,689	99,083	86,249	140,105	74,566
2005	480,875	259,982	72,357	96,816	85,374	148,466	77,862
2010	508,847	273,096	76,907	108,354	80,356	155,164	88,066
2015	540,300	288,195	75,722	118,848	88,456	153,210	104,064
2020	562,804	298,761	70,170	123,679	101,962	152,687	114,306
2021	564,122	298,887	70,676	121,893	102,146	153,425	115,982
Population with educational qualification (ISCED 3 or more)							
2000	311,475	168,382	40,012	81,784	68,463	91,484	29,732
2005	329,298	178,804	38,280	80,685	68,768	106,473	35,092
2010	360,129	195,907	40,521	89,104	64,888	118,939	46,677
2015	397,018	215,950	41,965	96,801	72,084	122,457	63,711
2020	433,274	235,491	37,696	104,092	85,769	127,303	78,414
2021	433,828	235,751	37,132	101,899	85,258	128,424	81,115
Secondary (ISCED 3–4), total							
2000	156,561	81,667	36,574	38,849	29,947	38,531	12,660
2005	163,623	84,677	36,384	39,558	28,940	44,262	14,479
2010	169,328	86,309	37,293	39,624	24,834	49,386	18,191
2015	177,938	89,594	37,855	41,035	25,482	49,430	24,136
2020	179,370	89,569	32,922	41,452	28,158	47,806	29,032
2021	177,935	88,687	32,345	40,257	27,898	47,609	29,826
of which							
Upper secondary general education							
2000	67,922	36,446	28,339	18,763	8,831	8,896	3,093
2005	71,695	37,862	28,093	20,833	8,815	10,725	3,229
2010	70,449	36,099	27,838	18,707	7,920	11,944	4,040
2015	66,846	33,472	25,510	16,299	8,091	11,529	5,417
2020	64,080	31,887	23,667	14,102	7,905	11,576	6,830
2021	63,597	31,645	23,749	13,787	7,480	11,575	7,006
Secondary vocational education							
2000	88,639	45,221	8,235	20,086	21,116	29,635	9,567
2005	91,928	46,815	8,291	18,725	20,125	33,537	11,250
2010	98,879	50,210	9,455	20,917	16,914	37,442	14,151
2015	111,092	56,122	12,345	24,736	17,391	37,901	18,719
2020	115,290	57,682	9,255	27,350	20,253	36,230	22,202
2021	114,338	57,042	8,596	26,470	20,418	36,034	22,820
Tertiary education (ISCED 5–6), total							
2000	154,914	86,715	3,438	42,935	38,516	52,953	17,072
2005	165,675	94,127	1,896	41,127	39,828	62,211	20,613
2010	190,801	109,598	3,228	49,480	40,054	69,553	28,486
2015	219,080	126,356	4,110	55,766	46,602	73,027	39,575
2020	253,904	145,922	4,774	62,640	57,611	79,497	49,382
2021	255,893	147,064	4,787	61,642	57,360	80,815	51,289

7.6

Population 15 years of age and over by educational level and age 2000–2020 (continues)

of which	Year	Total	of whom women	Age				
				15–24	25–34	35–44	45–64	65–
Lowest-level tertiary education (ISCED 5B)								
	2000	61,745	39,099	1,728	17,014	16,577	19,790	6,636
	2005	53,406	34,037	32	6,453	15,387	23,527	8,007
	2010	47,708	30,426	28	1,225	9,971	25,813	10,671
	2015	44,023	28,289	20	246	4,356	25,052	14,349
	2020	40,651	26,247	4	209	1,114	22,094	17,230
	2021	39,661	25,638	8	180	727	21,007	17,739
Lower degree (ISCED 5A)								
	2000	31,864	17,590	1,300	8,090	5,621	12,632	4,221
	2005	42,355	24,422	1,539	16,371	6,342	13,106	4,997
	2010	57,985	34,304	2,999	25,202	9,442	13,562	6,780
	2015	72,838	42,676	3,874	29,827	16,183	13,611	9,343
	2020	87,418	50,428	4,506	32,878	22,235	16,359	11,440
	2021	88,143	50,691	4,524	32,375	22,168	17,276	11,800
Higher degree (ISCED 5A)								
	2000	54,820	27,755	408	17,013	14,608	17,380	5,411
	2005	62,239	32,720	325	17,614	16,139	21,728	6,433
	2010	75,845	40,947	200	22,250	18,479	25,758	9,158
	2015	91,220	50,503	216	24,935	23,434	29,468	13,167
	2020	112,433	62,981	264	28,764	30,915	35,398	17,092
	2021	114,539	64,355	255	28,367	31,240	36,708	17,969
Doctorate level (ISCED 6)								
	2000	6,485	2,271	2	818	1,710	3,151	804
	2005	7,675	2,948	0	689	1,960	3,850	1,176
	2010	9,263	3,921	1	803	2,162	4,420	1,877
	2015	10,999	4,888	0	758	2,629	4,896	2,716
	2020	13,402	6,266	0	789	3,347	5,646	3,620
	2021	13,550	6,380	0	720	3,225	5,824	3,781
Basic education only (ISCED 1–2) or education unknown								
	2000	160,217	88,637	31,677	17,299	17,786	48,621	44,834
	2005	151,577	81,178	34,077	16,131	16,606	41,993	42,770
	2010	148,718	77,189	36,386	19,250	15,468	36,225	41,389
	2015	143,282	72,245	33,757	22,047	16,372	30,753	40,353
	2020	129,530	63,270	32,474	19,587	16,193	25,384	35,892
	2021	130,294	63,136	33,544	19,994	16,888	25,001	34,867

Source: Statistics Finland.

Culture and leisure

List of diagrams and tables

8.1	Number of visitors at prominent tourist attractions in Helsinki in 2000–2022	52
8.2	Helsinki City library statistics 2000–2022.....	53
8.3	Sports and recreation 2000–2022	54

8.1

Number of visitors at prominent tourist attractions
in Helsinki in 2000–2022

	2000	2005	2010	2015	2020	2022
<i>Tourist attraction</i>						
Linnanmäki Amusement Park ¹	1,055,532	1,197,768	1,055,000	1,000,000	700,000	1,000,000
Suomenlinna Sea Fortress	671,805	632,000	736,000	931,000	450,000	854,500
Helsinki Zoo	557,697	483,202	436,135	523,602	353,194	523,427
Temppeliaukio Church	495,120	568,440	508,393	500,000	92,145	284,333
Uspensky Cathedral	450,400	500,500	500,000	400,000	50,000	250,000
Helsinki Music Festival	321,872	254,454	271,896	295,970	37,000	182,000
Casino Helsinki	228,067	274,843	292,023	295,261	105,442	177,567
Helsinki Cathedral and Crypt	312,421	399,278	452,300	500,000	50,000	250,000
University of Helsinki Botanical Garden	58,226	74,172	28,400	38,713	115,000	..
Seurasaari Open-Air Museum	51,683	40,385	30,606	41,031	11,473	18,830

¹ Also includes the visitors at the events Carnival of Light, *Jouluhattara* Christmas event, and *Jäähelmi* winter event.

Source: The statistics of each separate tourist attraction.

	2000	2010	2015	2020	2021	2022
Libraries	37	37	36	37	37	37
Mobile libraries (buses)	2	2	2	2	2	2
Libraries in hospitals etc.	17	10	10	6	6	6
Books (incl. music) on 31 Dec.	1,806,255	1,612,439	1,562,299	1,566,144	1,595,914	1,587,520
in Finnish	1,389,859	1,236,731	1,203,615	1,214,143	1,207,921	1,209,906
in Swedish	191,128	145,729	129,525	132,695	135,054	139,332
in other languages	188,158	199,020	203,166	219,306	224,008	238,282
music scores	37,110	30,959	25,993	28,650	28,931	29,544
Sound recordings	161,141	225,654	200,480	113,176	119,567	107,741
Image recordings	29,404	42,487	55,105	49,509	46,282	43,373
Others	33,582	15,741	16,826	23,955	24,232	23,701
Newspaper and periodical subscriptions	5,949	5,005	4,715	3,402	3,258	3,125
Borrowers	243,819	211,309	235,051	239,185	213,816	231,726
per 1,000 inhabitants	443	359	374	366	325	349
Home service clients	302	464	410	412	388	400
Number of visits at the library	7,160,113	6,449,357	6,133,185	5,197,400	4,388,083	6,570,815
Virtual visits	1,396,804	6,803,235	12,460,193	15,915,048	15,590,416	10,104,188
Hours open	96,911	94,304	103,912	85,671	108,345	112,808
Total, loans	9,150,598	9,179,672	8,827,319	7,281,878	7,849,150	8,765,856
per 1,000 inhabitants	16.6	15.6	14.1	14	12.0	13.2
per 1,000 borrowers	37.7	43.4	37.6	37.5	36.7	37.8
Number of times the E-material was used	–	–	412,702	1,325,620	1,487,128	1,565,910
Mobile libraries	237,233	239,871	192,092	113,836	136,187	163,748
Percentages of loans						
Books (incl. music)	73.9	70.4	77.3	84.5	88.3	87.7
Music sheets and scores	1.3	1.4	1.3	1.2	1.2	1.2
Sound recordings	14.7	15.0	9.7	4.6	3.6	3.3
Image recordings	6.7	10.4	8.2	5.4	3.6	3.3
Others	4.7	4.2	4.9	4.1	4.4	4.5
Non-fiction books	39.3	37.3	37.5	28.8	29.9	33.2
Fiction books	60.7	62.7	62.5	55.8	57.2	66.8
Books for adults	71.5	69.6	65.6	60.0	58.8	56.7
Books for children		30.4	34.4	40.0	41.2	43.3
Books in Finnish		86.3	85.7	85.7	85.3	84.5
Books in Swedish		3.8	4.3	4.6	4.8	5.0
Books in other languages		9.9	9.9	9.7	9.9	10.5
Events and activities	1,639	2,470	6,008	2,469	2,843	4,454
Guiding sessions	671	866	1 248	737	899	997

¹ From 2003 on, the statistics on the loans of the home service distinguish its own loans from the total number of loans.

² Distance loans received.

Source: Culture and Leisure Division.

	2000	2010	2015	2020	2022
City-coordinated sports activities					
Customers	49,386	103,004	149,169	84,425	37,304
Sports associations and clubs having received allocations	397	398	371	319	317
Outdoor sports facilities¹					
Total number	466	462	552	611	590
of which					
football pitches, tennis courts etc.	286	298	260	254	257
outdoor swimming stadiums	2	2	2	2	2
visitors	313,773	396,592	391,739	245,887	372,648
Beaches for swimming	25	25	24	26	26
Indoor sports facilities¹					
Total number	72	69	80	79	83
of which public swimming pools ²	4	4	4	4	4
visitors at public swimming pools	715,055	³ 704,456	³ 743,264	³ 447,657	³ 552,886
Recreational areas and parks					
Area, ha	4,641	⁴ 3,850	3,834	3,834	3,813
recreational areas, ha	4,396	3,807	3,774	3,774	3,774
parks, ha	245	43	⁵ 60	⁵ 60	560
Mooring places for boats	9,342	12,063	11,923	11,878	11,900
Overnight stays at campsites	102,850	100,787	91,234	48,254	84,251

¹ The classification of sports and recreation facilities changed in 2012.

² Owned by the city.

³ Incl. visits at the public swimming pools in Itäkeskus, Jakomäki, Pirkkola and Yrjönkatu. The Jakomäki public swimming pool was closed in 2010.

⁴ The decrease is due to the fact that some waterfront recreational areas such as Utela, Ramsinniemi, Meri-Rastila and part of Kallahdenniemi are no longer managed by Helsinki City Sports Department, nor is the Kauhala area in Kirkkonummi.

⁵ In addition, Paloheinänhuippu, which has been entirely transferred under the control of the Sports Department.

Source: Helsinki City Sports Department.

Energy and water supply

List of diagrams and tables

9.1	Production and supply of electric energy 1990–2022	56
9.2	Supply and sale of district heating 1990–2022.....	56
9.3	Water pumped, sold and consumed 2000–2022	57

9.1

Production and supply of electric energy 1990–2022

	1990	1995	2000	2010	2015	2020	2021	2022
<i>GWh</i>								
Supply and production								
Shares in hydroelectric power stations	270			459	868	845	869	849
Shares in nuclear-electric power stations	597	1,258	1,418	1,144	1,379	1,413	1,402	1,593
Other shares	229							
Actual purchase	46	326	1,023	159	91	118	77	–
Purchase of substitute electricity	126							
Production of Helsinki City's own power stations	2,798	3,712	5,002	5,716	4,663	3,648	3,095	2,027
Hanasaari		1,835	1,721	803	919	534	605	1,096
Salmisaari		832	1,033	568	566	817	750	685
Myllypuro		73	–	–	–	–	–	–
Vuosaari		58	957	3,919	4,231	2,298	1,740	246
Kellosaari		1	1	–	–	–	–	–
Total supply	4,066	5,296	7,443	7,859	7,035	6,110	5,561	4,799

Source: Helen Ltd.

9.2

Supply and sale of district heating 1990–2022

	1990	2000	2005	2010	2015	2020	2022
Total supply, GWh	5,633	6,537	7,103	7,850	6,436	6,397	6,765
of which							
Hanasaari power stations	3,074	1,267	1,135	1,774	1,297	1,821	2,359
Salmisaari power stations	1,601	1,298	1,621	1,005	1,296	1,144	1,583
Vuosaari power stations		3,559	3,783	3,887	3,283	2,408	264
Heating sales, GWh	5,444	6,106	6,569	7,363	6,024	6,056	6,878
To the distribution area	5,425	5,886	6,519	7,346	5,985	6,042	6,870
Outside the distribution area	19	220	50	17	39	15	8
Number of clients	9,257	11,374	12,800	14,010	15,039	16,000	15,669

Source: Helen Ltd.

9.3

Water pumped, sold and consumed 2000–2022

	1995	2000	2005	2010	2015	2020	2022
Total water pumped, 1,000 m³							
Helsinki, partly the Helsinki Metropolitan Area	70,925	80,600	81,890	–	–	–	–
Metropolitan Area	–	–	–	90,097	88,619	96,000	93,800
Total sales, 1,000 m³							
Helsinki, partly the Helsinki Metropolitan Area	63,763	72,013	72,657	–	–	–	–
Metropolitan Area	–	–	–	71,360	71,830	75,800	75,300
Price of water on 31 Dec., euro/m³							
Helsinki	0.82	0.46	0.67	0.78	1.08	1.19	1.27
Price of waste water on 31 Dec., euro/m³							
Helsinki	1.42	1.34	1.21	1.11	1.34	1.41	1.49

Source: Helsinki Region Environmental Services Authority and the cities concerned.

City finances and personnel

List of diagrams and tables

10.1	City of Helsinki consolidated balance sheet 31 Dec. 2005–2022.....	60
10.2	City of Helsinki tax revenue, the proportion of state grants in the operational economy, and the annual margin 2000–2022.....	61
10.3	City staff by divisions on 31 Dec. 2022.....	61

Million euros	31 Dec. 2010	31 Dec. 2015	31 Dec. 2020	31 Dec. 2021	31 Dec. 2022
Assets					
Fixed assets					
Intangible assets	111.3	370.6	305.7	249.4	473.4
Tangible assets	9,084.3	11,252.0	12,992.2	16,379.2	18,068.7
Securities and other long-term investments	765.5	1,247.3	1,167.8	1,286.6	1,405.8
Assets managed	246.0	471.4	455.7	659.5	592.7
Current assets					
Inventories	84.1	87.5	98.8	145.1	305.7
Receivables	263.7	404.4	440.0	608.5	853.0
Investments	642.8	623.9	496.4	772.8	977.0
Cash and bank receivables	143.7	347.8	1,001.6	855.8	830.6
Total assets	11,341.4	14,805.0	16,958.2	20,956.9	23,506.9
Liabilities					
Capital					
Fixed capital	2,977.9	2,974.4	2,972.4	20,956.9	2,972.4
Basic capital of associations and foundations		5.8	5.8	7.0	9.1
Share of increase in joint municipal authorities' original capital	8.0	-	-	-	-
Fund for annecation fee	0.7	-	-	-	-
Revaluation reserve	1,845.4	1,832.2	1,813.2	1,795.8	1,790.6
Other own funds	664.4	711.7	812.7	1,085.6	1,182.0
Other equity	729.0	734.2	734.1	734.1	734.1
Surplus/deficit from previous financial years	178.7	1,314.0	3,276.8	5,668.9	6,536.6
Surplus/deficit for financial year	136.8	418.2	282.4	568.9	430.5
Minority interests	49.6	60.5	69.6	171.4	313.7
Provisions	792.7	938.5	179.6	94.6	98.4
Capital managed	607.7	779.6	567.2	683.3	630.5
Loans and borrowings	2,446.9	3,825.0	4,541.5	5,383.8	6,214.6
Long-term	853.5	1,212.7	1,702.9	1,791.1	2,594.4
Total liabilities	11,341.4	14,805.0	16,958.2	20,956.9	23,506.9
Loans per inhabitant, euro	4,497	6,917	7,977	8,442	9,800

Source: Annual accounts of the City of Helsinki.

10.2

City of Helsinki tax revenue, the proportion of state grants in the operational economy, and the annual margin 2000–2022

	Total tax revenue ¹	of which			Share of state grants in the operational economy	Annual margin
		Municipal tax	Real estate tax	Share of corporate tax revenue		
<i>Current monetary value in the relevant year, million euros</i>						
2000	2,163	1,347	102	713	-13	506.1
2010	2,506	2,064	185	257	250	388.0
2011	2,740	2,218	187	335	260	574.3
2012	2,759	2,306	189	263	297	439.1
2013	2,906	2,442	195	269	276	472.7
2014	2,952	2,435	207	310	251	480.7
2015	3,068	2,481	214	373	273	265.1
2016	3,206	2,586	221	397	316	569.4
2017	3,381	2,595	257	529	220	837.9
2018	3,417	2,581	263	575	197	752.0
2019	3,494	2,633	274	587	233	741.0
2020	3,565	2,792	254	519	479	863.4
2021	3,829	2,821	281	727	330	757.1
2022	4,100	3,029	296	775	378	732,8

¹ The total sum of tax revenue also includes other tax revenue, chiefly dog tax.

Source: Annual accounts of the City of Helsinki.

10.3

City staff by divisions on 31 Dec. 2022

	Permanent staff	Temporary staff	Total
Central Administration	3,768	623	4,391
The Urban Environment Division	2,180	216	2,396
Education division	9,178	5,413	14,591
Culture and leisure division	1,486	425	1,911
Social services and health care division	10,562	3,662	14,224
Total	27,174	10,339	37,513

Source: Executive Office, Financial Management Helsinki.

Labour force

List of diagrams and tables

11.1	Labour force by industry¹ and age 2021.....	64
11.2	Percentage of employed people in various age groups by age and gender 2021	65
11.3	Unemployment rate % by gender in 2000–2021	66

	Total		Age				
		%	-24	25-39	40-49	50-59	60-
Labour force total	353,085		29,566	146,449	77,411	69,162	30,497
Employed total	314,578	100.0	26,695	132,671	69,210	60,225	25,777
A Agriculture forestry and fishing	84	0.0	1	37	16	24	6
B Mining and quarrying	17,588	5.5	713	7,171	4,383	3,903	1,418
C Manufacturing	1,652	0.5	43	769	376	325	139
D Electricity gas heat and air conditioning supply	753	0.2	54	323	164	152	60
E Water supply sewerage, waste management and remediation activities	14,213	4.6	868	6,004	3,186	3,028	1,127
F Construction	31,827	10.3	5,032	12,982	6,188	5,583	2,042
G Wholesale and retail trade; repair of motor vehicles and motorcycles	14,470	4.5	1,210	5,450	3,159	3,362	1,289
H Transportation and storage	12,389	3.4	2,829	5,131	2,214	1,731	484
I Accommodation and food service activities	29,672	9.4	970	14,921	8,024	4,319	1,438
J Information and communication	12,029	4.0	612	5,709	2,665	2,268	775
K Financial and insurance activities	4,238	1.3	187	1,481	808	1,033	729
L Real estate activities	33,521	10.6	1,571	16,695	7,559	5,351	2,345
M Professional, scientific and technical activities	27,037	8.0	5,287	11,058	4,472	4,316	1,904
N Administrative and support service activities	18,902	6.4	492	6,598	4,582	4,819	2,411
O Public administration and defence; compulsory social security	24,519	0.0	1,496	9,706	5,985	5,020	2,312
P Education	44,021	8.0	2,830	17,522	9,145	9,710	4,814
Q Human health and social work activities	10,450	14.5	1,282	4,091	2,429	1,830	818
R Arts, entertainment and recreation	0	3.1	0	0	0	0	0
S Other service activities	10,745	3.4	706	4,260	2,410	2,282	1,087
T Activities of households as employers	665	0.3	106	267	107	101	84
U Activities of extraterritorial organisations and bodies	268	0.1	4	115	68	60	21
X Industry unknown	5,086	1.8	367	2,248	1,173	902	396
Unemployed	38,507		2,871	13,778	8,201	8,937	4,720
Unemployment rate, %	10.9		9.7	9.4	10.6	12.9	15.5

¹ Standard Industrial Classification 2008.

Source: Statistics Finland. Employment statistics.

11.2

Percentage of employed people in various age groups by age and gender 2021

Age, year olds	Helsinki	Espoo	Vantaa	Kauniainen	Tampere	Turku	Oulu	Finland
15–74	61.6	63.0	62.1	61.8	58.1	56.4	57.2	57.7
15–24	37.8	32.7	40.0	26.2	38.2	40.7	33.1	34.5
25–34	74.6	74.0	73.1	73.1	71.6	70.1	69.7	73.9
35–44	77.8	80.4	78.1	84.2	77.4	75.0	79.7	80.8
45–54	78.9	84.1	81.2	88.4	79.0	77.3	81.8	82.1
55–64	68.4	73.2	70.0	76.5	66.8	65.0	65.8	67.1
65–74	7.2	7.1	6.1	8.9	5.7	5.4	4.9	5.3
Men, year olds								
15–74	61.8	64.2	64.0	62.1	58.6	56.4	57.3	57.8
15–24	32.9	29.3	37.7	22.8	34.7	36.0	30.5	32.3
25–34	75.2	77.0	76.7	77.1	72.4	70.4	70.1	75.4
35–44	78.6	83.0	80.2	85.3	77.8	74.9	80.3	81.6
45–54	77.1	84.0	80.6	89.9	77.9	75.5	80.6	80.9
55–64	65.5	72.2	68.7	75.4	64.4	61.9	62.8	64.4
65–74	8.1	8.3	7.1	10.7	6.4	6.2	5.6	5.5
Women, year olds								
15–74	61.4	61.8	60.2	61.6	57.5	56.4	57.1	57.6
15–24	42.0	36.4	42.4	30.0	41.3	44.7	35.8	36.9
25–34	74.0	70.7	69.0	69.3	70.8	69.8	69.2	72.4
35–44	77.0	77.8	75.7	83.1	76.9	75.1	79.0	79.8
45–54	80.6	84.2	81.8	87.0	80.2	79.0	83.1	83.3
55–64	71.0	74.2	71.3	77.6	69.1	67.7	68.6	69.7
65–74	6.5	6.2	5.4	7.3	5.2	4.9	4.4	5.0

Source: Statistics Finland. Employment statistics.

11.3

Unemployment rate % by gender in 2000–2021

	Helsinki	Espoo	Vantaa	Kauniainen	Tampere	Turku	Oulu	Finland
Total								
2000	8.3	5.9	7.2	4.2	14.0	13.9	13.7	12.5
2005	9.1	6.1	7.9	4.2	12.5	11.4	13.2	11.1
2010	7.8	5.8	8.5	4.1	13.8	12.9	12.8	10.3
2014	11.6	9.7	11.4	6.9	17.4	16.8	17.2	13.8
2015	12.2	10.6	12.3	7.2	18.3	17.1	17.3	14.3
2016	11.9	10.1	11.7	7.2	17.7	16.3	16.6	13.5
2017	10.4	8.6	9.9	5.9	14.1	13.6	14.0	11.3
2018	9.1	7.7	8.5	6.0	11.1	11.9	11.8	9.8
2019	8.9	7.4	8.3	5.2	11.4	11.3	11.7	9.8
2020	14.1	11.5	14.4	8.8	14.7	15.9	14.0	13.3
2021	10.9	8.9	11.8	6.1	10.9	12.6	11.7	10.2
Men								
2000	9.6	6.4	7.9	4.5	13.3	14.4	13.4	12.3
2005	10.8	6.9	8.7	5.0	12.5	12.2	13.8	11.4
2010	9.5	6.6	9.9	4.8	15.4	16.1	15.0	11.9
2014	13.3	10.6	12.5	7.9	19.9	19.7	19.9	15.8
2015	13.9	11.4	13.4	8.1	20.3	19.9	19.4	16.1
2016	13.4	10.8	12.4	7.7	19.6	18.4	18.3	14.9
2017	11.6	9.0	10.4	6.4	15.3	15.1	15.2	12.4
2018	10.3	8.1	9.0	6.5	12.3	13.4	13.2	10.9
2019	10.2	7.9	8.9	6.2	12.8	13.0	13.4	11.2
2020	15.7	12.0	14.7	9.8	16.6	19.3	16.1	15.2
2021	12.3	9.3	12.1	6.5	12.3	14.4	13.5	11.6
Women								
2000	7.1	5.4	6.5	3.9	14.7	13.4	14.1	12.7
2005	7.5	5.4	7.0	3.5	12.5	10.7	12.5	10.8
2010	6.3	5.0	7.1	3.4	12.1	9.9	10.4	8.8
2014	10.0	8.8	10.3	6.1	15.0	14.0	14.5	11.7
2015	10.7	9.7	11.0	6.3	16.2	14.4	15.1	12.4
2016	10.6	9.4	11.0	6.7	15.9	14.3	14.9	12.1
2017	9.2	8.1	9.3	5.4	12.8	12.2	12.6	10.2
2018	7.9	7.3	8.0	5.5	9.9	10.4	10.4	8.6
2019	7.8	6.9	7.7	4.2	10.1	9.5	9.9	8.3
2020	12.6	11.0	14.0	7.9	12.8	12.6	11.8	11.4
2021	9.6	8.5	11.4	5.8	9.6	10.8	9.8	8.8

Source: Statistics Finland. Employment Statistics.

Economic activities

List of diagrams and tables

12.1	Jobs by industry in Helsinki 2020–2021	68
12.2	Jobs by industry in 2021	69
12.3	Number of enterprises, staff and turnover by industry in Helsinki 2021	70

12.1

Jobs by industry in Helsinki 2020–2021

Industry (SIC 2008)	2020	2021	
	<i>Number</i>	<i>Number</i>	<i>% of the whole country</i>
All industries total	398,045	416,086	17.5
A Agriculture, forestry and fishing	314	380	0.6
B Mining and quarrying	88	60	0.9
C Manufacturing	17,107	18,096	6.0
D Electricity, gas, steam and air conditioning supply	2,067	2,166	17.1
E Water supply; sewerage, waste management	1,154	1,195	10.0
F Construction	20,625	21,058	12.5
G Wholesale and retail trade; repair of motor vehicles and motorcycles	37,048	38,149	14.8
H Transportation and storage	16,589	17,300	14.5
I Accommodation and food service activities	12,454	15,039	18.7
J Information and communication	43,764	46,864	42.8
K Financial and insurance activities	21,114	21,366	48.0
L Real estate activities	6,038	6,626	27.3
M Professional, scientific and technical activities	42,616	45,386	30.5
N Administrative and support service activities	30,811	33,928	18.8
O Public administration and defence; compulsory social security	31,998	31,922	28.8
P Education	24,434	24,747	14.6
Q Human health and social work activities	56,958	57,506	13.6
R Arts, entertainment and recreation	10,922	12,174	27.4
S Other service activities	15,290	15,950	25.4
T Activities of households as employers	837	660	8.8
U Activities of extraterritorial organisations and bodies	467	426	93.6
X Industry unknown	5,350	5,088	16.5

Source: Statistics Finland. Employment statistics.

12.2

Jobs by industry in 2021

	Jobs, total	Industry (SIC 2008)							Work- place self-suffi- ciency, %
		Manufacturing and construction	Trade, transport and accommodation	Information and media	Finance, real-estate, liberal professions and support services	Public administration, education, health and social welfare services	Arts and culture, recreation and other services	Other and unknown	
		C,F	G-I	J	K-N	O-Q	R-S	A-B, D-E, T, U, X	
Helsinki Metropolitan Area	666,656	85,225	140,001	63,751	154,980	167,961	37,063	17,675	116.5
Helsinki	416,086	39,154	70,488	46,864	107,306	114,175	28,124	9,975	132.3
Espoo	129,657	19,602	26,198	14,645	27,678	31,940	5,148	4,446	92.6
Vantaa	118,546	26,373	43,066	2,211	19,627	20,546	3,570	3,153	104.6
Kauniainen	2,367	96	249	31	369	1,300	221	101	52.7
Rest of Helsinki Region	106,045	25,863	24,141	1,208	16,629	29,584	4,557	4,063	68.7
Hyvinkää	19,730	5,135	4,399	186	2,924	5,934	707	445	95.1
Järvenpää	13,853	2,971	2,907	141	2,304	4,513	655	362	65.2
Kerava	12,326	2,948	3,048	190	2,110	2,932	688	410	73.4
Kirkkonummi	11,026	2,144	1,972	135	2,475	3,429	468	403	57.2
Nurmijärvi	6,145	1,284	1,623	57	760	1,768	226	427	64.6
Mäntsälä	12,389	3,476	2,760	107	1,716	3,190	523	617	58.9
Pornainen	1,051	172	206	10	159	332	47	125	42.6
Sipoo	7,071	1,360	2,203	94	1,130	1,686	279	319	65.1
Tuusula	14,429	4,402	3,444	170	1,956	3,371	551	535	76.0
Vihti	8,025	1,971	1,579	118	1,095	2,429	413	420	59.7
Helsinki Region	772,701	111,088	164,142	64,959	171,609	197,545	41,620	21,738	106.3
Tampere	131,385	22,384	22,430	11,436	26,905	39,477	5,748	3,005	119.0
Turku	104,982	16,486	19,064	4,668	20,942	36,220	4,990	2,612	123.3
Oulu	94,664	17,097	16,083	5,295	17,218	32,202	3,948	2,821	104.3
Finland, total	2,377,126	472,073	457,613	109,551	397,955	701,919	107,286	130,729	100

NOTE: The statistics comply with the district division of 1 Jan. 2023. Data from merged municipalities have been combined.

Source: Statistics Finland. "Kaupunki- ja seutuindikaattorit", i.e. urban and regional indicator database.

12.3

Number of enterprises, staff and turnover by industry in Helsinki 2021

	Industry (SIC 2008)	Enter-prises	%	Staff	%	Turnover ¹	%
Total		54,641	100	260,813	100	97,619,063	100
C	Manufacturing	1,487	2.7	17,611	6.8	18,483,025	18.9
D	Electricity, gas, steam and air conditioning supply	151	0.3	2,088	0.8	5,198,032	5.3
E	Water supply; sewerage, waste management	72	0.1	848	0.3	417,160	0.4
F	Construction	3,154	5.8	19,595	7.5	7,409,569	7.6
G	Wholesale and retail trade	6,216	11.4	31,453	12.1	30,122,627	30.9
H	Transportation and storage	2,109	3.9	14,319	5.5	3,139,369	3.2
I	Accommodation and food service activities	2,865	5.2	10,103	3.9	1,300,619	1.3
J	Information and communication	4,209	7.7	39,731	15.2	12,002,951	12.3
K	Financial and insurance activities	4,164	7.6	20,526	7.9
L	Real estate activities	6,186	11.3	5,757	2.2	5,382,157	5.5
M	Professional, scientific and technical activities	10,265	18.8	31,884	12.2	6,532,036	6.7
N	Administrative and support service activities	2,600	4.8	44,933	17.2	3,956,247	4.1
P	Education	924	1.7	1,987	0.8	246,921	0.3
Q	Human health and social work activities	3,598	6.6	12,761	4.9	1,773,728	1.8
R	Arts, entertainment and recreation	2,289	4.2	3,337	1.3	1,240,999	1.3
S	Other service activities	3,193	5.8	3,684	1.4	370,034	0.4
A-B, T, U, X	Other or unknown	1,159	2.1	195	0.1	43,590	0.0

¹ Due to rounding off the figures in the turnover column may not add up exactly to the total turnover figure.

Source: Statistics Finland's Business Register.

Income and consumption

List of diagrams and tables

13.1	Income recipients and income by income bracket in Helsinki 2021	72
13.2	Income recipients by age and gender 2014–2021.....	73
13.3	Income subject to state taxation on average by gender and age of income recipient 2014–2021	74
13.4	State taxable income of various kinds of households 2021.....	74

13.1

Income recipients and income by income bracket in Helsinki 2021

Income bracket	Income recipients			Income subject to state taxation, share %		
	Persons	%	Accumulation %	Total	Earned income %	Capital income %
-5,000	49,381	8.6	8.6	0.4	0.4	0.4
5,000-10,000	42,620	7.4	16.1	1.4	1.6	0.5
10,000-15,000	54,923	9.6	25.7	2.8	3.1	0.6
15,000-20,000	45,144	7.9	33.5	3.3	3.7	0.7
20,000-25,000	44,383	7.8	41.3	4.2	4.7	0.9
25,000-30,000	44,523	7.8	49.1	5.2	5.8	1.2
30,000-35,000	44,807	7.8	56.9	6.1	6.9	1.3
35,000-40,000	41,364	7.2	64.1	6.5	7.3	1.5
40,000-50,000	65,762	11.5	75.6	12.4	13.8	3.2
50,000-60,000	43,587	7.6	83.2	10.0	11.0	3.4
60,000-80,000	46,472	8.1	91.3	13.4	14.5	6.3
80,000-100,000	20,827	3.6	94.9	7.8	8.2	5.3
100,000-	28,928	5.1	100	26.4	19.3	74.8
Total	572,721	100.0		100.0	100.0	100.0
Income, 1,000 euro				23,715,209	20,665,398	3,049,811
Share of income subject to state taxation				100	87	13

Source: Finnish Tax Administration.

13.2

Income recipients by age and gender 2014–2021

	Age, years								Total
	-18	18-24	25-34	35-44	45-54	55-64	65-74	75+	
Total									
2014	14,944	53,907	114,081	84,912	80,550	71,022	59,970	45,839	525,225
2015	14,720	52,984	117,571	88,840	81,194	71,931	62,000	46,434	535,674
2016	15,120	52,121	119,721	91,919	80,775	72,516	62,416	48,145	542,733
2017	15,606	51,044	121,971	95,581	80,052	73,282	64,402	48,448	550,386
2018	16,083	50,440	122,711	98,485	77,968	74,049	64,936	49,911	554,583
2019	17,117	49,444	124,178	101,557	77,700	75,201	65,618	51,436	562,251
2020	15,543	47,358	123,509	103,287	77,517	75,983	65,188	54,189	562,574
2021	17,248	47,338	122,965	103,808	77,806	76,524	64,204	57,018	566,911
%	3.0	8.4	21.7	18.3	13.7	13.5	11.3	10.1	100.0
	Gender								
	Men	Women	Total						
2014	244,628	280,597	525,225						
2015	250,145	285,529	535,674						
2016	254,225	288,508	542,733						
2017	258,848	291,538	550,386						
2018	261,405	293,178	554,583						
2019	265,827	296,424	562,251						
2020	265,394	297,180	562,574						
2021	267,397	299,514	566,911						
%	47.2	52.8	100.0						

Source: Finnish Tax Administration.

13.3

Income subject to state taxation on average by gender and age of income recipient 2014–2021

2021 currency rate, euro/ year	Age, years								Total
	-18	18-24	25-34	35-44	45-54	55-64	65-74	75+	
Total									
2014	1,631	12,730	30,040	44,464	48,660	47,761	38,789	29,788	36,075
2015	1,597	12,591	30,636	45,262	49,566	48,377	40,126	30,574	36,823
2016	1,581	12,711	30,654	45,149	49,486	48,111	39,149	30,956	36,715
2017	1,575	12,970	31,630	46,344	50,359	49,178	39,635	32,282	37,657
2018	1,785	12,974	32,586	48,109	52,285	50,445	40,047	32,805	38,713
2019	1,623	13,165	32,934	47,277	52,963	50,980	40,438	34,126	38,999
2020	1,767	12,532	33,631	48,855	54,002	51,590	39,494	34,263	39,742
2021	1,710	12,835	35,200	51,088	58,720	53,878	41,168	35,508	41,679

	Gender			Share of women´s income of men´s income %
	Men	Women	Total	
2014	41,615	31,246	36,075	75.1
2015	42,902	31,498	36,824	73.4
2016	42,619	31,512	36,715	73.9
2017	44,087	31,948	37,657	72.5
2018	45,477	32,682	38,713	71.9
2019	45,049	33,574	38,999	74.5
2020	46,469	33,735	39,743	72.6
2021	49,426	34,762	41,679	70.3

Source: Finnish Tax Administration.

13.4

State taxable income of various kinds of households 2021

	Household- dwelling units	Income subject to state taxation	
		Average per household- dwelling unit, euro	Median per household- dwelling unit, euro
Total	347,146	639,675	65,394
1-member household	175,045	175,045	36,150
Married/unmarried couple without children. or at least 2 persons (not a family)	77,966	155,932	95,564
Married/Unmarried couple with children	51,245	191,959	122,865
Single-parent family	23,198	58,271	46,555
Others	19,692	58,468	78,522

Source: Statistics Finland.

Justice and public safety

List of diagrams and tables

14.1	Offences known to the police in Helsinki Police District 1995–2022.....	76
14.2	Fines and convictions at courts of first instance 2022.....	76
14.3	Helsinki City Rescue Department’s operation 2015–2022	77

14.1

Offences known to the police in Helsinki Police District
1995–2022

	1995	2000	2005	2010	2015	2020	2022
Total	103,170	106,162	100,108	116,990	104,473	106,036	73,489
All offences, Helsinki	77,791	85,284	74,583	83,520	74,504	84,998	64,676
% of all offences in Finland	18.4	18.8	17.3	19.4	18.0	16.8	15.0
Crime against property	58,912	64,700	49,874	56,245	47,023	48,382	38,566
Crime against life and health	4,887	5,047	5,450	6,783	6,294	6,025	6,670
Sexual offences	191	178	359	315	428	647	725
Offences against justice, authorities and public order	1,044	2,053	2,604	2,903	2,944	3,269	3,276
Certain traffic offences	3,189	4,745	6,896	5,695	4,479	6,508	4,572
Other crimes	9,568	8,561	9,400	11,579	13,336	20,167	10,867
Endangering traffic safety hit-and-run, traffic (motoring) offences	25,379	20,878	25,525	33,470	29,969	18,796	6,573
Share of similar offences in the whole country %	7.6	6.7	7.2	6.6	7.4	9.2	8.8

Source: Helsinki Policy Authority and Statistics Finland. Justice. Yearbook of Justice Statistics.

14.2

Fines and convictions at courts of first instance 2022

	Helsinki		Finland	
	Total	Residents of Helsinki	Total	Residents of Helsinki
Total	12,875	11,035	109,275	16,588
Summary penal fee ¹	284	162	2,435	204
Fine orders ²	7,868	4,212	72,964	6,567
Fines	4,723	2,484	33,876	3,758
Verdicts of guilty ³	0	4,177	0	6,059
imprisonment		498		738
community.service		84		123
supervisory sentence (electronic tag curfew)		3		9
probation		916		1,317
earlier conviction sufficient (Finnish Penal Code 7:6-7§§)		75		143
fines		2,319		3,330
mistrials		29		47
other punishments		253		352

¹ Including also summary penal fees by courts of law.

² 1–31 Dec. 2022. A new Fines Act came into effect on 1 Dec. 2022.

³ Not including summary penal fees by courts of law.

Source: Statistics Finland.

14.3

Helsinki City Rescue Department's operation 2015–2022

	2016	2017	2018	2019	2020	2021	2022
Total staff	676	672	660	706	720	760	797
Rescue operations	8,867	9,543	9,617	9,268	8,807	9,438	8,704
Emergency medical care alarms	60,695	61,483	61,857	63,550	56,608	63,888	64,000
Accident prevention	5,918	5,756	6,039	5,222	4,988	4,670	6,483
Fire inspections	1,245	961	969	842	614	1,015	585
Places in bomb shelter	881,951	886,283	903,222	914,313	926,743	911,719	938,801

Source: Helsinki City Rescue Department and RegionCD.

Elections

List of diagrams and tables

15.1	Municipal elections in Helsinki 2004–2021	80
15.2	Parliamentary elections in Helsinki 2011–2023	80
15.3	Presidential elections in Helsinki 2006–2018	81
15.4	EU Parliament elections 2014 and 2019	81

15.1

Municipal elections in Helsinki 2004–2021

	2004	2008	2012	2012	2021	2021
Persons entitled to vote	452,271	459,428	474,209	499,692	527,982	542,830
% of persons entitled to vote in Finland	11.3	11.2	11.3	11.6	12	12.2
Persons who voted in Helsinki	230,336	262,362	279,181	286,787	326,351	334,867
Voting turnout %	50.9	57.1	58.9	57.4	61.8	61.7
Voting turnout % in municipal elections in Finland ¹	55.9	58.6	61.2	58.3	58.9	55.1
Ballots rejected in Helsinki	1,289	1,457	1,387	1,420	1,126	972
Percentage	0.6	0.6	0.5	0.5	0.3	0.3
Percentage in the whole country ²	0.8	0.6	0.6	0.5	0.6	0.5

¹ Of those entitled to vote.

² Of ballots submitted.

Source: Statistics Finland.

15.2

Parliamentary elections in Helsinki 2011–2023

	2011 ¹	2011 ²	2015 ¹	2015 ²	2019 ¹	2019 ²	2023 ¹	2023 ²
Persons entitled to vote	454,861	44,720	472,893	48,982	488,502	52,381	491,137	55,238
% of persons entitled to vote in Finland	10.4	19.6	11.2	20.2	11.5	20.6	11.5	21.0
Men	207,028	16,514	216,144	18,303	223,656	19,716	224,960	21,001
Women	247,833	28,206	256,749	30,679	264,846	32,665	266,177	34,237
Persons who voted in Helsinki	343,523	6,446	355,359	6,888	379,511	9,253	381,953	9,527
Voting turnout % ³	75.5	14.4	75.1	14.1	77.7	17.7	77.8	17.2
Voting turnout % in parliamentary elections in Finland ³	70.5	10.6	70.1	10.1	72.1	12.6	72.0	12.2
Ballots rejected in Helsinki	2,084	..	2,372	..	3,204	..	2,979	..
Percentage ⁴	0.6	..	0.7	..	0.7	..	0.8	..
Percentage in the whole country ⁴	0.6	..	0.5	..	0.6	..	0.5	..

¹ Finnish citizens resident in Finland. For more details, see www.vaalit.fi.

² Finnish citizens resident abroad. For more details, see www.vaalit.fi.

³ Of those entitled to vote.

⁴ Of ballots submitted.

Source: Statistics Finland.

15.3

Presidential elections in Helsinki 2006–2018

	2006		2012		2018
	<i>First round</i>	<i>Second round</i>	<i>First round</i>	<i>Second round</i>	<i>First round</i>
Persons entitled to vote	478,589	478,589	502,960	502,960	535,967
In Helsinki ¹	439,144	439,144	457,588	457,588	484,684
Abroad ²	39,445	39,445	45,372	45,372	51,283
Persons who voted	349,649	356,786	358,412	350,718	358,681
In Helsinki ¹	335,229	350,856	350,317	342,487	349,687
Voting turnout % ³	76.3	79.9	76.6	74.8	72.1
Abroad ²	5,420	5,930	8,095	8,231	8,994
Voting turnout % ³	13.7	15.0	17.8	18.1	17.5

¹ Persons in Helsinki's population register. For more details, see www.vaalit.fi

² Persons not resident but entitled to vote in Helsinki. For more details, see www.vaalit.fi

³ Of those entitled to vote.

Source: Statistics Finland.

15.4

EU Parliament elections 2014 and 2019

	2014		2019	
	<i>Helsinki</i>	<i>Finland</i>	<i>Helsinki</i>	<i>Finland</i>
Persons entitled to vote	516,194	4,440,297	540,402	4,504,481
Persons who voted	250,194	1,736,618	278,536	1,836,059
Voting turnout % ¹	48.5	39.1	51.5	40.8
Ballot papers rejected	1,255	10,435	836	6,014
Voting turnout % ²	0.5	0.6	0.3	0.3

¹ Of those entitled to vote.

² Of ballots submitted.

Source: Statistics Finland.

Helsinki

The Helsinki Statistical Yearbook compiles a wide range of statistics on various themes. It presents a comprehensive picture of Helsinki, its residents and development based on reliable statistical data. In addition to the statistics on Helsinki, the yearbook offers comparative data regarding the Helsinki Metropolitan Area, the Helsinki Region and Finland as a whole. The various themes and their development are described in a total of 247 statistical tables.