

Helsinki

# Statistical Yearbook of Helsinki

2022

The data in the tables and statistical figures are available in an accessible format by e-mail at kaupunkitieto.kirjasto(at)hel.fi

City of Helsinki. Executive Office. Urban Research and Statistics

Address	P.O. Box 550. FI-00099 City of Helsinki. Finland (Työpajankatu 8)
Telephone	+358 9 310 43297
Inquiries	Ari Jaakola. tel. +358 9 310 43608. ari.jaakola@hel.fi Solja Saarto. tel. +358 310 36378. solja.saarto.@hel.fi
ISBN	978-952-386-256-2

# Statistical Yearbook of Helsinki

# 2022

20<sup>th</sup> volume

# Contents

- Preface ..... 4**
- Explanation of symbols ..... 5**
- Area and environment ..... 7**
- Population ..... 11**
- Housing..... 23**
- Transport and Tourism ..... 31**
- Health care ..... 35**
- Social welfare ..... 41**
- Education..... 45**
- Culture and leisure ..... 51**
- Energy and water supply..... 55**
- City finances and personnel ..... 59**
- Labour force ..... 63**
- Economic activities..... 67**
- Income and consumption..... 71**
- Justice and public safety ..... 75**
- Elections..... 79**

# Preface

The Helsinki Statistical Yearbook of Helsinki brings together a wide range of statistics on various themes. It presents a comprehensive picture of Helsinki, its residents and development based on reliable statistical data. In addition to the statistics on Helsinki, the yearbook offers comparative statistics regarding the Helsinki Metropolitan Area, the Helsinki Region and Finland as a whole. Furthermore, the book contains separate sections on the major city regions in Scandinavia and the capitals of the Baltic States. The various themes and their development are described in a total of 247 statistical tables.

The 2022 yearbook is the 110th annual edition. Over the decades, the content of the yearbook has been revised several times, but the purpose of giving a varied description of the city and its residents based on the latest statistics remains the same. This year, some statistics for which updated information is no longer available were removed from the yearbook. The most visible change compared to previous yearbooks is the renewed layout. Now it has been changed to match the visual look of the City of Helsinki's publications.

The effects of the corona pandemic are still visible in the statistics. In 2021, Helsinki's population growth was slower than at any time in the 2010s. In addition, the effects of the corona pandemic can be seen in for example in the statistics of the culture and tourism sector.

The Statistical Yearbook of Helsinki can be studied online (see [www.hel.fi/urbanfacts](http://www.hel.fi/urbanfacts)). The 1905–2008 editions are available in a digital format on the City Archives database Sinetti ([www.sinettiarkisto.fi](http://www.sinettiarkisto.fi)). Furthermore, the tables of the yearbook are available as open data on the Helsinki Region Infoshare web service ([www.hri.fi](http://www.hri.fi)). The latter contains all the statistical tables published in the yearbook since 2002.

Additional information on many themes covered in the yearbook can be found in the statistical and research publications of the City of Helsinki Executive Office ([www.hel.fi/urbanfacts](http://www.hel.fi/urbanfacts)). Statistics on Helsinki by districts and sub-districts are available on the Helsinki Region Area Database ([www.aluesarjat.fi](http://www.aluesarjat.fi)). The publication Helsinki by District Library of Urban Research and Statistics provides an information service related to urban research and statistics in Helsinki.

The yearbook is compiled by the Urban Research and Statistics Unit in the City Executive Office, but the statistics included in the book has been provided by many informants in the city organization and outside it. The editorial work for this year's edition was carried out by Information Service Secretary **Solja Saarto**. The renewed layout was designed by Graphic Designer **Lotta Haglund** and prepared by Statistics Secretary **Sirkka Koski**. I want warmly thank all our cooperation partners within and outside the city administration for their invaluable contribution to the completion of the Statistical Yearbook of Helsinki 2022.

Helsinki, November 2022

**Ari Jaakola**

*Statistics and Information Services Manager*

# Explanation of symbols

## Coefficients for monetary value

Year	2020 currency rate		2021 currency rate	
	Coefficient	Year	Coefficient	Year
1995	0,2389	1995	0,2441	
2000	0,2212	2000	0,2261	
2005	1,2385	2005	1,2657	
2010	1,1271	2010	1,1519	
2017	1,0241	2010	1,0354	
2018	1,0132	2019	1,0249	
2019	1,0029	2020	1,0220	
2020	1,0000	2021	1,0000	

## Explanation of symbols

Magnitude nil	–
Magnitude less than half of unit employed	0
Data subject to secrecy	...
Data not available	..
Category not applicable	.
Preliminary data	*
Corrected figure	u
Men	M
Women	W
A horizontal line drawn across a time series shows substantial breaks in the homogeneity of a series.	

## Reader instructions

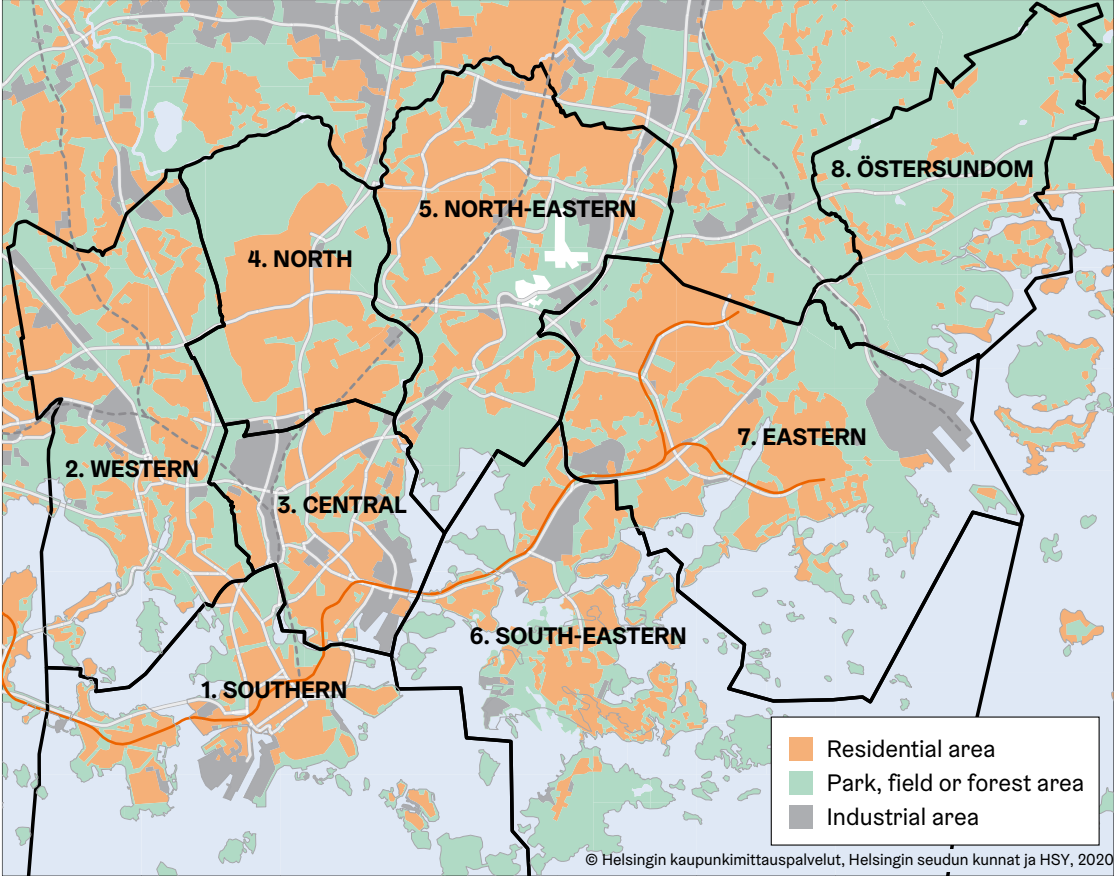
The book contains some data denominated in euros expressed in fixed monetary value for 2020 or 2021. This has been done in an attempt to eliminate the impacts of changes in monetary value on the figures. The cost of living index 1951:10 = 100 has been used as the **deflation coefficient**. The coefficients for different years are stated in conjunction with the symbols.

There is always a reference in conjunction with the euro-denominated data as to whether the figures have been stated in fixed monetary value for 2020 or 2021. Where no reference is stated, the euro-denominated data is in the current monetary value. Where figures are examined **in relation to the population figure**, the average population figure has been used as the population figure if the data apply to the whole year.

The year book presents **district data** in accordance with the **district division system** approved by the City Board. The district division system is at four levels with the city being divided into 8 major districts, which are subdivided into a total of 34 districts. These districts comprise sub-districts and small districts in the official district division. There are currently 148 sub-districts and 404 small areas. Each major district, district and sub-district has a code and name confirmed by the City Board and small areas have a code only. Major districts have a single-digit code from 1-8 and districts have a three-digit code, with the first digit designating the major district in which the district lies. The three-digit code of sub-districts is formed from the city area code (the two first digits) and the sub-district code (the last digit). A full list of the district names and codes in the district division system can be found with the district division map appendix.

**The Helsinki Metropolitan Area** comprises the cities of Helsinki, Espoo, Vantaa and Kauniainen. **The Helsinki Region** comprises these four cities and those of Hyvinkää, Järvenpää, Kerava, Kirkkonummi, Nurmijärvi, Sipoo, Tuusula, Vihti and, since 1 Jan. 2005, Mäntsälä and Pornainen.

# Major districts and land use in Helsinki 2022



# Area and environment

## List of diagrams and tables

<b>1.1</b>	<b>Area and population density by major district 2022.....</b>	<b>8</b>
<b>1.2</b>	<b>Air temperature and water-level 1995–2021.....</b>	<b>8</b>
<b>1.3</b>	<b>Respirable particles (PM<sub>10</sub>), nitrogen dioxide and ozone in the air 2005–2021 .....</b>	<b>9</b>
<b>1.4</b>	<b>Green house gas emissions corresponding to consumption in Helsinki 1990–2021 .....</b>	<b>9</b>
<b>1.5</b>	<b>Water quality in certain sea areas in Helsinki .....</b>	<b>10</b>



## 1.1

## Area and population density by major district 2022

Major District	Area, km <sup>2</sup>		Inhabitants per km <sup>2</sup> land
	Total	of which land <sup>1</sup>	
1. Southern	152.7	18.1	6.694
2. Western	36.5	30.5	3.669
3. Central	17.7	15.8	6.249
4. Northern	23.2	23.2	1.853
5. North-Eastern	37.6	36.4	2.729
6. South-Eastern	362.4	25.2	2.248
7. Eastern	56.5	37.5	3.011
8. Östersundom	28.7	26.2	69
Islands not included in these areas	3.6	3.6	
<b>The whole city</b>	<b>719.0</b>	<b>216.5</b>	<b>3.041</b>
Espoo	528.0	330.3	900
Vantaa	240.4	240.4	995
Kauniainen	6.0	6.0	1.733
Helsinki Region	5,518.9	3,841.5	400

<sup>1</sup> Incl. lakes and streams.

Source: Helsinki Municipal Data System, City of Helsinki, Urban Environment Division and National Land Survey of Finland (NLS).

## 1.2

## Air temperature and water-level 1995–2021

	Air temperature (°C) <sup>1</sup>			Water-level (cm) <sup>2</sup>		
	Mean	Max.	Min.	Mean	Max.	Min.
1995	6.2	27.7	-24.4	8	94	-56
2000	7.2	26.3	-18.0	6	85	-51
2005	6.6	29.6	-18.3	4	151	-44
2010	5.0	30.1	-22.6	-10	64	-93
2015	7.8	26.9	-14.0	10	114	-45
<b>2021</b>	<b>6.5</b>	<b>30.2</b>	<b>-21.2</b>	<b>3</b>	<b>94</b>	<b>-50</b>
I	-3.5	3.7	-21.2	-8	25	-35
II	-6.6	8.1	-19.5	-21	17	-50
III	0.0	9.8	-15.1	-1	30	-47
IV	5.0	15.0	-1.0	79	62	-22
V	10.3	24.6	0.5	-8	18	-29
VI	19.3	29.8	9.1	-12	7	-27
VII	21.4	30.2	12.0	-13	5	-28
VIII	15.9	23.3	8.9	6	39	-28
IX	10.4	18.4	4.0	-13	21	-49
X	8.7	14.3	-2.5	10	94	-29
XI	2.7	10.7	-9.5	22	63	-9
XII	-5.3	4.8	-16.3	0	32	-37

<sup>1</sup> At Kaisaniemi monitoring station.

<sup>2</sup> At surface by a quay in the Kaivopuisto district.  
The measure is the theoretical average water level.

Source: Finnish Meteorological Institute.

## 1.3

Respirable particles (PM<sub>10</sub>), nitrogen dioxide and ozone in the air 2005–2021

Air quality	Annual mean, µg/m <sup>3</sup>			
	2005	2010	2015	2021
<b>Respirable particles content, PM<sub>10</sub></b>				
Mannerheimintie 5 <sup>1</sup>	30	25	20	20
Kallio	15	15	12	10
Leppävaara <sup>2</sup> (in Espoo)	23	15	20	14
Tikkurila (In Vantaa)	23	16	12	11
<b>Nitrogen dioxide content, NO<sub>2</sub></b>				
Mannerheimintie 5 <sup>1</sup>	43	41	32	18
Kallio	22	23	18	12
Leppävaara <sup>2</sup> (in Espoo)	24	28	23	15
Tikkurila (In Vantaa)	30	30	21	15
<b>Ozone content, O<sub>3</sub></b>				
Mannerheimintie 5 <sup>1</sup>	37	39	41	..
Kallio	48	48	50	52
Tikkurila	46	44	..	..

<sup>1</sup> Measuring started in 2005.

<sup>2</sup> Location of monitoring station changed in January 2005 and 2010.

Source: HSY Helsinki Region Environmental Services Authority: Ilmanlaatu pääkaupunkiseudulla.

## 1.4

## Green house gas emissions corresponding to consumption in Helsinki 1990–2021

Total emissions, 1,000 t CO<sub>2</sub> equiv.

	1990	2000	2010	2015	2020	2021	1990–2021 change%
<b>Total</b>	3,514	3,120	3,249	2,602	2,345	2,345	-33
District heating	1,662	1,205	1,362	1,215	1,236	1,279	-23
Electrical heating	114	105	90	79	72	68	-40
Individual property heating	78	96	111	73	52	46	-41
Consumer electricity	516	686	838	481	315	324	-37
Transportation	686	710	719	624	577	541	-21
Industry and work machinery	168	97	26	20	33	34	-80
Waste and waste water treatment	288	221	100	110	60	52	-82
Agriculture	2	1	1	1	1	1	-56

Emissions per capita, tons of CO<sub>2</sub> equiv./inhabitant

	1990	2000	2010	2015	2020	2021	1990–2021 change%
<b>Total</b>	7.1	5.6	5.5	4.1	3.6	3.6	-50
District heating	3.4	2.2	2.3	1.9	1.9	1.9	-42
Electrical heating	0.2	0.2	0.2	0.1	0.1	0.1	-55
Individual property heating	0.2	0.2	0.2	0.1	0.1	0.1	-56
Consumer electricity	1.1	1.3	1.4	0.8	0.5	0.5	-53
Transportation	1.4	1.3	1.2	1.0	0.9	0.8	-41
Industry and work machinery	0.3	0.2	0.0	0.0	0.1	0.1	-85
Waste and waste water treatment	0.6	0.4	0.2	0.2	0.1	0.1	-86
Agriculture	0.0	0.0	0.0	0.0	0.0	0.0	-67

Source: City of Helsinki. Urban Environment Division.

## 1.5

## Water quality in certain sea areas in Helsinki

Body of water	Ecological state				Chemical state				
	1973–1976	2016–2021	Materials and grounds for estimation	Reason for change	2000–2007	2006–2012	2012–2021	Chemical classification	Reason for change
Sipoo archipelago	Passable	Passable	2		Good	Good	Worse than good	1	3
Villinki	Passable	Passable	3		Good	Good	Worse than good	1	3
Kruunuvuorenselkä	Bad	Passable	3	2	Good	Worse than good	Worse than good	2	3
Seurasaari	Bad	Passable	3	2	Good	Good	Worse than good	2	3
Suvisaaristo-Lauttasaari	Passable	Satisfactory	3	3	Good	Good	Worse than good	2	3
Porvoo-Helsinki	Satisfactory	Satisfactory	1		Good	Good	Worse than good	1	3
Helsinki-Porkkala	Satisfactory	Satisfactory	1		Good	Good	Worse than good	1	3

## Ecological classification

## Materials

## Grounds for classification

- |   |            |                                                                                                                                                                           |
|---|------------|---------------------------------------------------------------------------------------------------------------------------------------------------------------------------|
| 1 | Extensive  | Extensive phytoplankton chlorophyll a materials and intensive station biomass materials, growth depth of kelp in a sheltered and open coastal zone and benthic materials. |
| 2 | Extensive  | Extensive phytoplankton chlorophyll a materials (passable) and quite extensive benthic materials (satisfactory).                                                          |
| 3 | Extensive  | Phytoplankton chlorophyll a materials and benthic results.                                                                                                                |
| 4 | Restricted | Phytoplankton chlorophyll materials and benthic results.                                                                                                                  |
| 5 | Restricted | Very restricted materials, water quality results from one station in 2011 and benthic information from two stations in 2011.                                              |

## Reason for change

- The state of both biological and physico-chemical factors has deteriorated. Sea-bottom de-oxygenation and, in summer, algal bloom occur in the area.
- With decreasing external loads, the bottom fauna in the area has recovered, which has improved the ecological quality rating. Waternutrient concentrations, too, have decreased.
- The bottom fauna has recovered and become more diversified, which has improved the ecological quality rating.

## Chemical classification

- Evaluation of chemical state made as expert evaluations when lacking suitable materials.
- Classification based on measurements, restricted materials.

Source: Urban Environment Division.

# Population

## List of diagrams and tables

<b>Population by mother tongue and age 31.12.2021</b> .....	<b>21</b>
<b>2.1 Helsinki's population 1875–2021</b> .....	<b>12</b>
<b>2.2 Population by age and sex on 31 Dec 2000–2021</b> .....	<b>13</b>
<b>2.3 Population on 31 Dec 2000–2021 and a projection for 31 Dec 2035 by district</b> .....	<b>14</b>
<b>2.4 Population by citizenship on 31 Dec 2005–2021</b> .....	<b>15</b>
<b>2.5 Persons having received a Finnish citizenship by mother tongue 2010–2021</b> .....	<b>16</b>
<b>2.6 Population by religious affiliation on 31 Dec 2000–2021</b> .....	<b>16</b>
<b>2.7 Families in Helsinki by type and age of children 1990–2021</b> .....	<b>17</b>
<b>2.8 Population changes by district 2021</b> .....	<b>18</b>
<b>2.9 Births in Helsinki in 1901–2021</b> .....	<b>19</b>
<b>2.10 Deaths<sup>1</sup> in Helsinki in 1901–2021</b> .....	<b>20</b>
<b>2.11 Life expectancy (average expectation of remaining lifetime) 1991–2021</b> .....	<b>20</b>
<b>2.12 Direction of migration 1986–2021</b> .....	<b>21</b>

Year	Total	Change <sup>2</sup> Number	%	Men	Women	Women per 1,000 men
<i>1 Jan</i>						
1875	23,070	1,313	6.0	10,236	12,834	1,254
1880	36,346	13,276	57.5	16,403	19,943	1,216
1885	41,579	5,233	14.4	18,746	22,833	1,218
1890	56,236	14,657	35.3	25,519	30,717	1,204
1895	64,554	8,318	14.8	28,213	36,341	1,288
1900	79,126	14,572	22.6	35,010	44,116	1,260
1905	93,626	14,500	18.3	41,198	52,428	1,273
1910	118,736	25,110	26.8	52,179	66,557	1,276
1915	153,467	34,731	29.3	69,102	84,365	1,221
1920	152,200	-1,267	-0.8	64,434	87,766	1,362
1925	162,070	9,870	6.5	67,545	94,525	1,399
1930	205,833	43,763	27.0	87,022	118,811	1,365
1935	225,482	19,649	9.5	94,146	131,336	1,395
1940	252,484	27,002	12.0	105,777	146,707	1,387
1945	276,277	23,793	9.4	113,710	162,567	1,430
1950	368,519	92,242	33.4	157,080	211,439	1,346
1955	403,970	35,451	9.6	174,553	229,417	1,314
1960	448,315	44,345	11.0	196,689	251,626	1,279
1965	494,796	7,374	1.5	219,975	274,821	1,249
1970	523,677	-1,951	-0.4	233,373	290,304	1,244
1975	502,961	-7,244	-1.4	223,252	279,709	1,253
1980	483,675	-1,728	-0.4	215,061	268,614	1,249
1985	484,122	-269	-0.1	216,411	267,711	1,237
<i>31 Dec</i>						
1990	492,400	1,771	0.4	222,566	269,834	1,212
1995	525,031	9,266	1.8	240,638	284,393	1,182
1996	532,053	7,022	1.3	244,621	287,432	1,175
1997	539,363	7,310	1.4	248,395	290,968	1,171
1998	546,317	6,954	1.3	252,366	293,951	1,165
1999	551,123	4,806	0.9	254,967	296,156	1,162
2000	555,474	4,351	0.8	257,399	298,075	1,158
2001	559,718	4,244	0.8	260,070	299,648	1,152
2002	559,716	-2	0.0	260,236	299,480	1,151
2003	559,330	-386	-0.1	260,441	298,889	1,148
2004	559,046	-284	-0.1	260,573	298,473	1,145
2005	560,905	1,859	0.3	261,627	299,278	1,144
2006	564,521	3,616	0.6	263,343	301,178	1,144
2007	568,531	4,010	0.7	265,728	302,803	1,140
2008	576,632	8,101	1.4	270,176	306,456	1,134
2009	583,350	6,718	1.2	273,577	309,773	1,132
2010	588,549	5,199	0.9	276,361	312,188	1,130
2011	595,384	6,835	1.2	280,064	315,320	1,126
2012	603,968	8,584	1.4	284,562	319,406	1,122
2013	612,664	8,696	1.4	288,957	323,707	1,120
2014	620,715	8,051	1.3	293,113	327,602	1,118
2015	628,208	7,493	1.2	297,151	331,057	1,114
2016	635,181	6,973	1.1	301,010	334,171	1,110
2017	643,272	8,091	1.3	305,237	338,035	1,107
2018	648,042	4,770	0.7	307,633	340,409	1,107
2019	653,835	5,793	0.9	310,702	343,133	1,104
2020	656,920	3,085	0.5	312,196	344,724	1,104
2021	658,457	1,537	0.2	313,429	345,028	1,101

<sup>1</sup> Figures include foreign nationals from 1951 on (and for the year 1915, when Russian subjects were included).

<sup>2</sup> Up until 1960 the change over the previous 5 years, after 1960 the change during the previous year.

Source: Census lists 1875–1989 and since 1990 Population Register Centre.

	2000	2005	2010	2015	2019	2020	2021
<b>Total population</b>							
<b>Total</b>	<b>555,474</b>	<b>560,905</b>	<b>588,549</b>	<b>628,208</b>	<b>653,835</b>	<b>656,920</b>	<b>658,457</b>
0–6 year olds	40,306	36,884	40,064	45,379	45,281	44,722	44,030
7–15	48,501	48,746	45,158	47,675	53,657	54,887	56,065
16–17	15,880	16,553	17,852	16,085	16,286	16,665	17,327
18–29	100,626	103,228	110,221	115,287	112,110	109,843	107,388
30–44	135,490	129,166	132,024	146,508	161,572	163,810	164,240
45–64	140,105	148,466	155,164	153,210	152,311	152,687	153,425
65–74	39,447	40,519	48,163	60,865	64,429	63,660	62,688
75–84	25,651	27,297	28,376	30,250	34,294	36,523	39,016
85–89	6,399	6,556	7,519	8,357	8,666	8,688	8,747
90–94	2,569	2,781	3,134	3,561	4,086	4,246	4,300
95–	500	709	874	1,031	1,143	1,189	1,231
<b>Total %</b>	<b>100</b>	<b>100</b>	<b>100</b>	<b>100</b>	<b>100</b>	<b>100</b>	<b>100</b>
0–6 year olds	7.3	6.6	6.8	7.2	6.9	6.8	6.7
7–15	8.7	8.7	7.7	7.6	8.2	8.4	8.5
16–17	2.9	3.0	3.0	2.6	2.5	2.5	2.6
18–29	18.1	18.4	18.7	18.4	17.1	16.7	16.3
30–44	24.4	23.0	22.4	23.3	24.7	24.9	24.9
45–64	25.2	26.5	26.4	24.4	23.3	23.2	23.3
65–74	7.1	7.2	8.2	9.7	9.9	9.7	9.5
75–84	4.6	4.9	4.8	4.8	5.2	5.6	5.9
85–89	1.2	1.2	1.3	1.3	1.3	1.3	1.3
90–94	0.5	0.5	0.5	0.6	0.6	0.6	0.7
95–	0.1	0.1	0.1	0.2	0.2	0.2	0.2
<b>Percentage of men</b>							
<b>Total</b>	<b>46.3</b>	<b>46.6</b>	<b>47.0</b>	<b>47.3</b>	47.5	47.5	47.6
0–6 year olds	50.9	50.6	50.9	51.4	51.1	51.0	51.0
7–15	51.1	51.0	51.0	51.0	51.1	51.2	51.1
16–17	49.7	50.2	50.1	49.1	49.7	49.7	49.2
18–29	47.5	47.2	46.7	46.4	46.2	46.0	46.1
30–44	49.5	50.2	50.8	51.1	50.9	50.9	50.8
45–64	45.8	46.2	46.7	47.4	48.3	48.4	48.7
65–74	40.3	41.3	42.1	42.7	42.6	42.7	43.0
75–84	29.2	32.5	35.6	37.2	38.2	38.4	38.5
85–89	20.8	22.4	25.5	29.1	31.5	32.1	32.7
90–94	17.2	16.5	18.8	21.4	23.9	24.6	25.5
95–	12.8	14.7	14.0	14.9	16.4	15.5	16.6

Source: Statistics Finland.

	2000	2010	2015	2021	2035
<b>Helsinki, total</b>	<b>551,123</b>	<b>583,350</b>	<b>620,715</b>	<b>658,457</b>	<b>754,285</b>
%	100	100	100	100	100
<i>Major Districts</i>					
<b>1. Southern Major District</b>	<b>97,015</b>	<b>99,683</b>	<b>108,210</b>	<b>121,157</b>	<b>134,287</b>
%	17.6	17.1	17.4	18.4	17.8
101 Vironniemi district	11,772	11,671	12,269	12,794	12,811
102 Ullanlinna district	22,668	23,050	24,045	24,636	29,011
103 Kampinmalmi district	29,796	30,394	34,625	43,738	48,167
104 Taka-Töölö district	14,432	14,502	14,965	15,253	15,222
105 Lauttasaari district	18,347	20,066	22,306	24,736	29,077
<b>2. Western Major District</b>	<b>100,639</b>	<b>101,328</b>	<b>106,287</b>	<b>112,045</b>	<b>125,712</b>
%	18.3	17.4	17.1	17.0	16.7
201 Reijola district	15,775	15,702	17,208	16,767	17,947
202 Munkkiniemi district	17,369	17,328	17,624	18,844	20,522
203 Haaga district	26,468	25,908	26,539	27,612	31,070
204 Pitäjänmäki district	14,948	15,465	17,696	18,322	20,599
205 Kaarela district	26,079	26,925	27,220	30,500	35,574
<b>3. Central Major District</b>	<b>73,252</b>	<b>78,561</b>	<b>88,651</b>	<b>98,640</b>	<b>128,280</b>
%	13.3	13.5	14.3	15.0	17.0
301 Kallio district	25,255	25,606	28,334	33,615	42,256
302 Alppiharju district	11,875	11,731	11,727	11,653	11,503
303 Vallila district	11,091	12,306	15,123	16,771	20,251
304 Pasila district	8,591	8,484	9,182	11,239	24,104
305 Vanhakaupunki district	16,440	20,434	24,285	25,362	30,166
<b>4. Northern Major District</b>	<b>41,250</b>	<b>41,164</b>	<b>42,218</b>	<b>42,973</b>	<b>46,464</b>
%	7.5	7.1	6.8	6.5	6.2
401 Maunula district	8,984	8,584	8,777	8,999	9,495
402 Länsi-Pakila district	6,403	6,587	6,945	7,053	6,651
403 Tuomarinkylä district	8,181	8,585	8,649	8,687	8,296
404 Oulunkylä district	14,145	13,634	14,118	14,581	18,727
405 Itä-Pakila district	3,537	3,774	3,729	3,653	3,295
<b>5. North-Eastern Major District</b>	<b>83,842</b>	<b>92,690</b>	<b>97,543</b>	<b>99,351</b>	<b>108,371</b>
%	15.2	15.9	15.7	15.1	14.4
501 Latokartano district	12,557	21,149	24,418	24,487	25,014
502 Pukinmäki district	9,176	8,292	8,260	8,722	9,070
503 Malmi district	26,023	27,947	28,986	29,202	38,655
504 Suutarila district	11,844	11,304	11,284	11,326	11,061
505 Puistola district	18,346	18,372	19,312	20,149	19,084
506 Jakomäki district	5,896	5,626	5,283	5,465	5,487
<b>6. South-Eastern Major District</b>	<b>44,918</b>	<b>46,666</b>	<b>48,971</b>	<b>56,728</b>	<b>71,329</b>
%	8.2	8.0	7.9	8.6	9.5
601 Kulosaari district	3,761	3,770	3,853	4,052	4,435
602 Herttoniemi district	24,574	26,423	28,126	30,523	33,645
603 Laajasalo district	16,583	16,473	16,992	22,153	33,249
<b>7. Eastern Major District</b>	<b>90,355</b>	<b>103,227</b>	<b>107,957</b>	<b>112,853</b>	<b>128,994</b>
%	16.4	17.7	17.4	17.1	17.1
701 Vartiokylä district	20,235	21,363	22,098	21,626	24,061
702 Myllypuro district	8,941	9,613	11,385	12,821	15,902
703 Mellunkylä district	35,932	36,425	37,363	39,749	41,383
704 Vuosaari district	25,247	35,826	37,111	38,657	47,648
<b>8. Östersundom Major District</b>	.	<b>2,113</b>	<b>2,063</b>	<b>1,809</b>	<b>1,676</b>
%	.	0.4	0.3	0.3	0.2
801 Östersundom district	.	2,113	2,063	1,809	1,676
<b>Others</b>	<b>19,852</b>	<b>17,918</b>	<b>18,815</b>	<b>12,901</b>	<b>9,173</b>
%	3.6	3.1	3.0	2.0	1.2
<b>Inner Helsinki</b>	<b>167,721</b>	<b>173,899</b>	<b>167,721</b>	<b>211,843</b>	<b>251,451</b>
<b>Outer Helsinki</b>	<b>363,550</b>	<b>391,533</b>	<b>410,117</b>	<b>433,713</b>	<b>493,661</b>

Helsinki's district division changed from 2013 on.

Source: Census lists (1980), Helsinki City's population register (1990), Statistics Finland (2000–2019) and City of Helsinki (2035).

	2005	2010	2015	2019	2020	2021
<b>All Helsinki residents</b>	<b>560,905</b>	<b>588,549</b>	<b>628,208</b>	<b>653,835</b>	<b>656,920</b>	<b>658,457</b>
Citizenship						
Finnish	530,135	544,088	570,601	590,185	591,983	590,424
Other	30,770	44,461	57,607	63,650	64,937	68,033
Percentage of the entire population	5.5	7.6	9.2	9.7	9.9	10.3
Europe	17,541	24,651	31,902	31,211	31,353	32,430
EU countries	10,407	16,731	23,680	23,067	21,592	22,243
Estonia	4,867	8,481	12,834	11,276	10,852	10,790
Sweden	1,219	1,278	1,260	1,204	1,184	1,152
EU member state since the 2000s (other than Estonia)	562	1,691	2,540	3,023	3,180	3,407
Other northern or western European	291	349	387	408	1,970	1,988
Other European	6,843	7,571	7,835	7,736	7,791	8,199
Russia	5,240	6,008	6,252	5,794	5,780	5,929
Africa	4,612	6,294	7,142	7,400	7,527	7,902
North America	949	1,129	1,388	1,717	1,725	1,850
Latin America or Caribbean	601	979	1,233	1,471	1,533	1,672
Southeast or East Asia	2,571	4,333	6,198	7,850	8,221	8,654
South West or Central Asia	3,866	6,333	8,870	13,019	13,561	14,479
Australia or Oceania	188	234	282	339	341	355
No citizenship or citizenship unknown	442	508	592	643	676	691

Source: Statistics Finland.



## 2.5

Persons having received a Finnish citizenship  
by mother tongue 2010–2021

	2010	2015	2016	2017	2018	2019	2020	2021
<b>Total</b>	<b>884</b>	<b>1,931</b>	<b>2,322</b>	<b>3,057</b>	<b>2,226</b>	<b>2,293</b>	<b>1,810</b>	<b>1,563</b>
<i>Mother tongue</i>								
Finnish	33	49	66	63	55	60	54	44
Swedish	6	6	16	27	19	22	21	21
Russian	316	419	415	639	445	489	335	299
Somali	67	364	481	431	438	289	250	225
Arabic	52	122	156	251	193	258	213	273
English	22	68	93	159	89	133	107	67
Estonian	35	60	87	94	76	118	75	58
Nepali	7	47	34	76	53	52	60	31
Kurdish	42	126	107	137	71	69	59	34
Spanish	17	37	48	65	40	45	54	31
Persian, Farsi	31	74	65	131	70	98	49	79
Vietnamese	20	22	48	52	37	64	35	41
Albanian	24	23	27	31	27	33	30	30
Thai	8	18	23	27	26	27	30	23
Turkish	23	25	49	48	50	50	24	19
Lingala	1	28	9	25	18	10	22	2
Other language	180	443	598	801	519	476	392	286

Source: Statistics Finland.

## 2.6

## Population by religious affiliation on 31 Dec 2000–2021

	2000	2010	2015	2020	2021
<b>Total</b>	<b>555,474</b>	<b>588,549</b>	<b>628,208</b>	<b>656,920</b>	<b>658,457</b>
Evangelical Lutheran Church of Finland	402,454	365,523	351,029	330,660	323,518
Other Lutherans	681	98	121	97	81
Finnish Orthodox Church	8,545	9,350	9,415	8,938	8,801
Other Greek Orthodox	658	1,242	1,702	1,944	1,949
Jehovah's witnesses	1,512	1,667	1,662	1,485	1,433
Lutheran free churches of Finland	906	904	984	1,004	973
Roman Catholic Church in Finland	2,605	3,398	3,943	4,133	4,166
Adventist churches	271	240	215	201	194
Church of Jesus Christ of Latter-day Saints	401	417	483	430	407
Baptist congregations	113	96	90	75	71
Methodist churches	234	191	183	186	179
Jewish congregations	678	633	607	601	596
Islamic* congregations	544	3,872	5,152	8,169	8,669
Other	163	992	1,512	2,201	2,176
No religious affiliation	135,709	199,926	251,110	296,796	305,244

\*Only registered congregations.

Source: Statistics Finland.

	All families							
	<i>Total</i>	<i>Children in these</i>	<i>Married couples without children<sup>2</sup></i>	<i>Unmarried couples without children</i>	<i>Married couples, with children</i>	<i>Unmarried couples, with children</i>	<i>Mother and children</i>	<i>Father and children</i>
<b>Families, total<sup>3</sup></b>								
1995	131,082	115,826	38,343	20,844	42,189	7,411	19,928	2,367
2000	136,710	119,355	39,477	24,760	39,917	9,131	20,825	2,600
2005	137,776	114,924	42,195	26,387	36,741	9,429	20,353	2,671
2010	144,528	117,321	44,678	28,989	37,561	10,083	20,370	2,847
2011	146,113	118,343	44,913	29,709	37,901	10,335	20,384	2,871
2012	148,303	119,745	45,450	30,348	38,391	10,559	20,597	2,958
2013	150,602	121,664	45,731	31,304	38,925	10,887	20,726	3,029
2014	152,650	123,782	45,946	31,968	39,634	11,194	20,841	3,067
2015	154,753	125,858	46,094	32,732	40,214	11,503	21,030	3,180
2016	156,620	127,469	46,313	33,496	40,497	11,776	21,338	3,200
2017	158,063	129,541	46,759	33,506	40,934	11,930	21,662	3,272
2018	159,092	130,544	47,064	33,753	41,244	12,097	21,626	3,308
2019	160,469	131,315	47,575	34,232	41,399	12,246	21,588	3,429
2020	161,282	131,318	47,691	35,006	41,182	12,402	21,595	3,406
2021	160,797	131,327	47,290	34,999	40,926	12,845	21,286	3,451
<b>Families with at least one 0–17 year old child</b>								
1995	57,073	93,423	.	.	34,813	6,891	14,036	1,333
2000	56,867	95,256	.	.	32,200	8,454	14,837	1,376
2005	55,208	93,072	.	.	30,079	8,779	14,865	1,485
2010	55,973	93,097	.	.	30,707	9,205	14,512	1,549
2011	56,410	93,761	.	.	30,989	9,364	14,510	1,547
2012	57,055	94,823	.	.	31,371	9,527	14,560	1,597
2013	57,806	96,394	.	.	31,812	9,815	14,597	1,582
2014	58,776	98,201	.	.	32,379	10,071	14,706	1,620
2015	59,877	100,148	.	.	32,990	10,299	14,873	1,715
2016	60,821	101,972	.	.	33,351	10,541	15,174	1,755
2017	61,819	104,080	.	.	33,836	10,714	15,458	1,811
2018	62,360	105,362	.	.	34,110	10,906	15,501	1,843
2019	62,972	106,633	.	.	34,392	11,089	15,565	1,926
2020	63,788	107,962	.	.	34,590	11,312	15,856	2,030
2021	64,035	108,315	.	.	34,481	11,755	15,728	2,071
<b>Families with at least one 0–6 year old child</b>								
1995	30,287	41,149	.	.	18,572	5,086	6,350	279
2000	28,644	40,113	.	.	16,592	5,803	5,983	266
2005	26,623	35,974	.	.	15,413	5,462	5,469	279
2010	28,588	39,190	.	.	16,870	5,853	5,579	286
2011	29,356	40,238	.	.	17,280	6,122	5,652	302
2012	30,139	41,349	.	.	17,663	6,295	5,857	324
2013	30,981	42,547	.	.	18,131	6,559	5,965	326
2014	31,849	43,689	.	.	18,611	6,830	6,074	334
2015	32,604	44,566	.	.	18,998	7,072	6,165	369
2016	33,033	45,069	.	.	19,151	7,237	6,268	377
2017	33,368	45,296	.	.	19,233	7,381	6,382	372
2018	33,250	45,097	.	.	19,088	7,443	6,340	379
2019	33,141	44,579	.	.	18,947	7,518	6,278	398
2020	32,975	44,144	.	.	18,716	7,629	6,229	401
2021	32,459	43,399	.	.	18,228	7,911	5,943	377

<sup>1</sup> At year-end 1990 and at turn of the year 1994/1995–2020/2021.<sup>2</sup> Also incl. registered couples of the same sex.<sup>3</sup> Children regardless of age.

Source: Census (1990). Helsinki City's population register and Statistics Finland.

	Population Dec 31, 2021	Population change 2021 <sup>1</sup>	Surplus of births over deaths	Net migration		
				Total	In and out of Helsinki	Within Helsinki <sup>2</sup>
<b>Helsinki, total</b>	<b>658,457</b>	<b>1,537</b>	<b>1,534</b>	<b>-3</b>	<b>-3</b>	<b>0</b>
<i>Major Districts</i>						
<b>1. Southern</b>	<b>121,157</b>	<b>-137</b>	<b>555</b>	<b>-740</b>	<b>1,411</b>	<b>-2,151</b>
101 Vironniemi district	12,794	-121	33	-167	213	-380
102 Ullanlinna district	24,636	-223	89	-324	342	-666
103 Kampinmalmi district	43,738	518	243	252	915	-663
104 Taka-Töölö district	15,253	-225	8	-234	245	-479
105 Lauttasaari district	24,736	-86	182	-267	-304	37
<b>2. Western</b>	<b>112,045</b>	<b>116</b>	<b>234</b>	<b>-102</b>	<b>-123</b>	<b>21</b>
201 Reijola district	16,767	-334	32	-362	13	-375
202 Munkkiniemi district	18,844	192	2	181	-80	261
203 Haaga district	27,612	-102	0	-101	-148	47
204 Pitäjänmäki district	18,322	82	65	30	-1	31
205 Kaarela district	30,500	278	135	150	93	57
<b>3. Central</b>	<b>98,640</b>	<b>2,092</b>	<b>246</b>	<b>1,836</b>	<b>1,995</b>	<b>-159</b>
301 Kallio district	33,615	1,195	51	1,149	930	219
302 Alppiharju district	11,653	-287	2	-288	281	-569
303 Vallila district	16,771	-80	68	-155	127	-282
304 Pasila district	11,239	941	36	901	498	403
305 Vanhakaupunki district	25,362	323	89	229	159	70
<b>4. Northern</b>	<b>42,973</b>	<b>-315</b>	<b>40</b>	<b>-363</b>	<b>-386</b>	<b>23</b>
401 Maunula district	8,999	-245	-45	-206	-108	-98
402 Länsi-Pakila district	7,053	52	-2	58	-66	124
403 Tuomarinkylä district	8,687	-43	36	-78	-126	48
404 Oulunkylä district	14,581	-85	40	-134	-68	-66
405 Itä-Pakila district	3,653	6	11	-3	-18	15
<b>5. North-Eastern</b>	<b>99,351</b>	<b>-954</b>	<b>370</b>	<b>-1,308</b>	<b>-888</b>	<b>-420</b>
501 Latokartano district	24,487	-326	148	-469	-92	-377
502 Pukinmäki district	8,722	-64	45	-105	-49	-56
503 Malmi district	29,202	-9	63	-72	-335	263
504 Suutarila district	11,326	-133	49	-179	-104	-75
505 Puistola district	20,149	-270	63	-333	-245	-88
506 Jakomäki district	5,465	-152	2	-150	-63	-87
<b>6. South-Eastern</b>	<b>56,728</b>	<b>870</b>	<b>248</b>	<b>610</b>	<b>-152</b>	<b>762</b>
601 Kulosaari district	4,052	-74	8	-85	-9	-76
602 Herttoniemi district	30,523	252	117	123	-125	248
603 Laajasalo district	22,153	692	123	572	-18	590
<b>7. Eastern</b>	<b>112,853</b>	<b>-16</b>	<b>83</b>	<b>-106</b>	<b>-256</b>	<b>150</b>
701 Vartiokylä district	21,626	-206	14	-230	15	-245
702 Myllypuro district	12,821	126	11	125	-127	252
703 Mellunkylä district	39,749	368	3	357	55	302
704 Vuosaari district	38,657	-304	55	-358	-199	-159
<b>8. Östersundom</b>	<b>1,809</b>	<b>-21</b>	<b>0</b>	<b>-19</b>	<b>6</b>	<b>-25</b>
801 Östersundom district	1,809	-21	0	-19	6	-25
<b>Others</b>	<b>12,901</b>	<b>-98</b>	<b>-242</b>	<b>189</b>	<b>-1,610</b>	<b>1,799</b>
<b>Inner Helsinki</b>	<b>211,843</b>	<b>1,708</b>	<b>651</b>	<b>1,002</b>	<b>3,724</b>	<b>-2,722</b>
<b>Outer Helsinki</b>	<b>433,713</b>	<b>-73</b>	<b>1125</b>	<b>-1,194</b>	<b>-2,117</b>	<b>923</b>

<sup>1</sup> Incl. corrections of population figure.<sup>2</sup> Data not available.

Source: Statistics Finland.

	Born alive		Boys		Out of wedlock	
	Number	Live birth rate, 0/00 <sup>1</sup>	Number	% <sup>2</sup>	Number	% <sup>2</sup>
<b>Annual average</b>						
1901–05	2,889	28.5	1,468	50.8	453	15.7
1906–10	3,558	28.8	1,831	51.5	603	16.9
1911–15	3,464	22.0	1,776	51.3	658	19.0
1916–20	2,703	15.0	1,393	51.5	385	14.2
1921–25	2,610	13.3	1,351	51.8	261	10.0
1926–30	2,652	12.2	1,341	50.6	237	8.9
1931–35	2,575	10.6	1,322	51.3	257	10.0
1936–40	3,722	13.6	1,916	51.5	375	10.1
1941–45	5,987	20.1	3,111	52.0	462	7.7
1946–50	7,723	22.4	3,969	51.4	485	6.3
1951–55	6,731	17.2	3,420	50.8	488	7.3
1956–60	7,505	17.3	3,868	51.5	491	6.5
1961–65	8,492	17.6	4,343	51.1	510	6.0
1966–70	8,389	15.9	4,274	50.9	569	6.8
1971–75	6,454	12.6	3,299	51.1	625	9.7
1976–80	5,994	12.3	3,114	52.0	828	13.8
1981–85	5,939	12.3	3,031	51.0	998	16.8
1986–90	6,110	12.5	3,129	51.2	1,553	25.4
1991–95	6,692	13.2	3,440	51.4	2,261	33.8
1996–2000	6,351	11.7	3,238	51.0	2,449	38.6
2001–2005	6,163	11.0	3,156	51.2	2,463	40.0
2006–2010	6,377	11.1	3,254	51.0	2,554	40.1
2011–2015	6,816	11.2	3,513	51.5	2,814	41.3
2016–2020	6,548	10.2	3,355	51.2	2,737	41.8
<b>Annually</b>						
2010	6,907	11.2	3,520	51.0	2,850	41.3
2011	7,016	11.2	3,654	52.1	2,977	42.4
2012	6,803	10.8	3,483	51.2	2,881	42.3
2013	6,566	10.3	3,322	50.6	2,750	41.9
2014	6,388	9.9	3,267	51.1	2,610	40.9
2015	6,332	9.7	3,221	50.9	2,658	42.0
2016	6,803	10.8	3,483	51.2	2,881	42.3
2017	6,566	10.3	3,322	50.6	2,750	41.9
2018	6,388	9.9	3,267	51.1	2,610	40.9
2019	6,332	9.7	3,221	50.9	2,658	42.0
2020	6,650	10.1	3,482	52.4	2,786	41.9
2021	7,082	10.8	3,605	50.9	3,224	45.5

<sup>1</sup> Per 1.000 persons in the average population number.<sup>2</sup> Of all live births.

Source: Statistics Finland and for 1986–93 Helsinki's population data system.

## 2.10

Deaths<sup>1</sup> in Helsinki in 1901–2021

	Men		Women		Total		Of which less than 1 year olds	
	Number	%	Number	%	Number	General death rate 0/00 <sup>2</sup>	Total	Boys
<b>Annual average</b>								
1901–05	937	53,5	816	46,5	1,753	17.3	550	300
1906–10	1,077	53,1	953	47,0	2,030	16.4	556	302
1911–15	1,170	52,5	1,059	47,5	2,229	14.2	499	280
1916–20	1,642	57,6	1,209	42,4	2,851	15.9	313	167
1921–25	1,092	51,4	1,035	48,7	2,126	10.8	188	103
1926–30	1,373	51,2	1,310	48,8	2,683	12.4	176	94
1931–35	1,367	49,8	1,377	50,2	2,744	11.2	147	81
1936–40	1,940	54,4	1,630	45,7	3,569	13.1	181	104
1941–45	2,703	58,6	1,908	41,4	4,610	15.5	339	185
1946–50	1,989	51,1	1,902	48,9	3,891	11.3	342	192
1951–55	1,829	48,5	1,941	51,5	3,770	9.7	150	88
1956–60	1,986	47,6	2,184	52,4	4,169	9.6	140	77
1961–65	2,210	46,6	2,533	53,4	4,743	9.8	163	93
1966–70	2,499	48,4	2,663	51,6	5,162	9.8	124	67
1971–75	2,546	49,0	2,653	51,0	5,198	10.2	71	43
1976–80	2,479	47,3	2,761	52,7	5,240	10.7	46	26
1981–85	2,387	45,6	2,852	54,4	5,238	10.8	38	23
1986–90	2,471	44,1	3,127	55,9	5,598	11.4	34	19
1991–95	2,312	43,5	2,999	56,5	5,311	10.5	33	19
1996–2000	2,272	43,7	2,926	56,3	5,197	9.6	28	15
2001–2005	2,262	44,7	2,798	55,3	5,060	9.0	19	8
2006–2010	2,293	46,2	2,667	53,8	4,959	8.6	15	8
2011–2015	2,316	45,9	2,726	54,1	5,042	8.3	15	8
2016–2020	2,429	47.0	2,739	53.0	5,168	8.0	11	7
<b>Annually</b>								
2010	2,349	46.0	2,760	54.0	5,109	8.7	21	9
2015	2,356	45.9	2,779	54.1	5,135	8.2	10	5
2016	2,372	46.2	2,758	53.8	5,130	8.1	12	6
2017	2,380	47.2	2,662	52.8	5,042	7.9	8	7
2018	2,409	46.4	2,782	53.6	5,191	8.0	10	6
2019	2,415	47.2	2,703	52.8	5,118	7.9	9	6
2020	2,568	47.9	2,789	52.1	5,357	8.2	14	8
2021	2,622	47.3	2,926	52.7	5,548	8.4	9	4

<sup>1</sup> 1950 or earlier including all those declared dead. <sup>2</sup> Per 1.000 persons in the average population number.

Source: Statistics Finland and for 1986–93 Helsinki's population data system.

## 2.11

Life expectancy  
(average expectation of remaining lifetime) 1991–2021

Age	1991–95			2001–05			2011–15			2021		
	Total	Men	Women	Total	Men	Women	Total	Men	Women	Total	Men	Women
0	75.8	71.5	79.3	78.2	74.4	81.3	80.7	77.5	83.3	81.6	78.7	84.1
10	66.3	62.0	69.8	68.6	64.8	71.7	70.9	67.7	73.6	71.7	68.9	74.2
20	56.5	52.2	59.9	58.7	55.0	61.8	61.0	57.8	63.7	61.9	59.0	64.3
30	46.9	42.9	50.2	49.0	45.4	52.0	51.3	48.2	53.9	52.1	49.4	54.5
40	37.6	33.8	40.6	39.5	36.1	42.2	41.6	38.7	44.1	42.4	39.8	44.7
50	28.8	25.4	31.4	30.5	27.3	33.0	32.3	29.5	34.5	32.9	30.4	35.0
60	20.6	17.7	22.5	22.2	19.4	24.1	23.7	21.3	25.5	24.2	22.0	25.9
70	13.5	11.3	14.5	14.7	12.5	15.9	16.0	14.1	17.2	16.2	14.5	17.5
80	7.8	6.7	8.1	8.4	7.1	8.9	9.1	8.0	9.7	9.5	8.4	10.1
85	5.6	5.0	5.8	6.0	5.0	6.3	6.4	5.6	6.7	6.7	5.9	7.1

Source: Statistics Finland and for 1986–93 Helsinki's population data system.

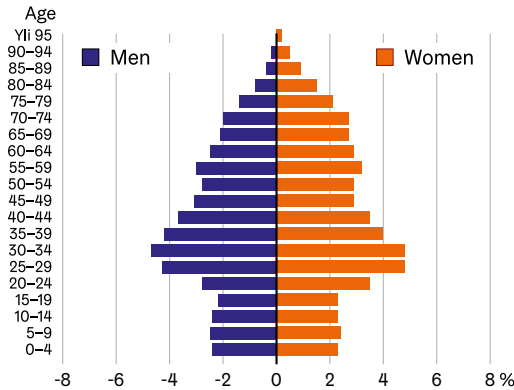
	1986–90	1991–95	1996–2000	2001–05	2006–10	2011–15	2016–20	2021
<b>Migrated from<sup>1</sup></b>	<b>24,012</b>	<b>26,396</b>	<b>30,814</b>	<b>32,725</b>	<b>36,084</b>	<b>39,996</b>	<b>42,696</b>	<b>42,729</b>
Helsinki Metropolitan Area	7,782	9,163	9,511	10,643	10,609	12,435	13,672	14,986
Rest of Uusimaa province	3,009	3,854	4,193	4,498	4,638	5,165	5,160	5,058
Rest of Finland	10,694	9,663	13,780	13,292	14,457	15,392	17,833	14,721
Abroad	2,079	3,643	3,329	4,292	6,380	7,005	7,324	7,964
<b>Migrated to<sup>1</sup></b>	<b>23,393</b>	<b>21,174</b>	<b>25,930</b>	<b>32,700</b>	<b>32,405</b>	<b>33,758</b>	<b>38,195</b>	<b>42,732</b>
Helsinki Metropolitan Area	10,320	9,997	10,833	13,559	12,767	13,541	16,067	18,399
Rest of Uusimaa province	4,462	3,867	4,718	6,006	5,724	5,170	5,524	7,119
Rest of Finland	6,766	5,945	7,744	10,019	10,608	11,057	12,685	13,457
Abroad	1,352	1,365	2,635	3,117	3,306	3,989	5,113	3,757
<b>Net migration<sup>1</sup></b>	<b>619</b>	<b>5,222</b>	<b>4,883</b>	<b>25</b>	<b>3,679</b>	<b>6,239</b>	<b>4,501</b>	<b>-3</b>
Helsinki Metropolitan Area	-2,538	-835	-1,321	-2,915	-2,158	-1,107	-2,395	-3,413
Rest of Uusimaa province	-1,453	-12	-525	-1,507	-1,086	-5	-364	-2 061
Rest of Finland	3,928	3,718	6,035	3,272	3,848	4,334	5,148	1,264
Abroad	727	2,278	694	1,175	3,074	3,016	2,211	4,207

<sup>1</sup> Incl. area unknown.

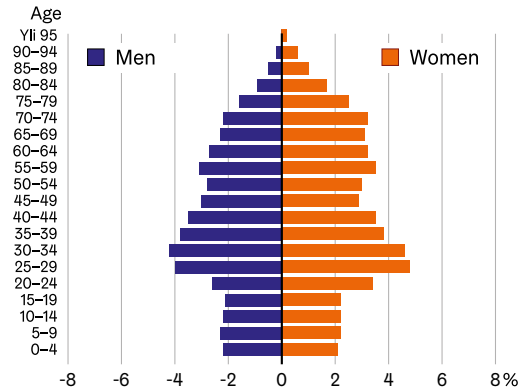
Source: Statistics Finland and for 1986–93 Helsinki's population data system.

## Population by mother tongue and age 31.12.2021

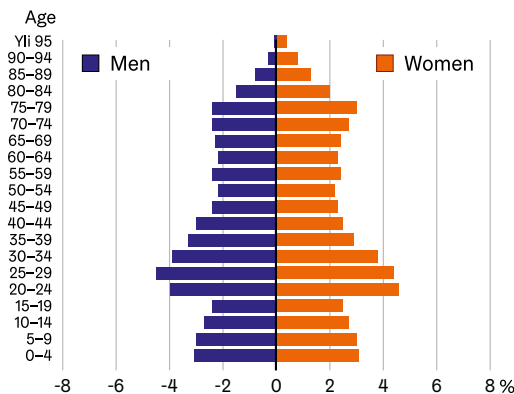
The whole population



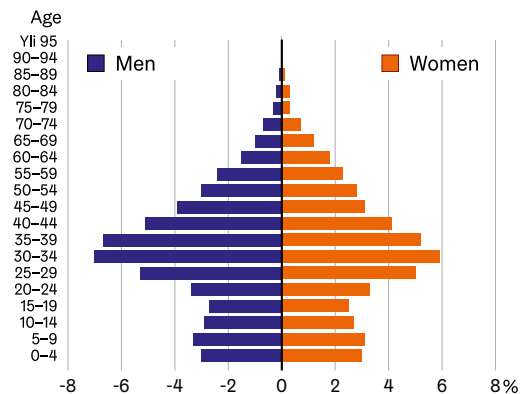
Finnish-speaking population<sup>1</sup>



Swedish-speaking population



Population with a foreign mother tongue



<sup>1</sup> Incl. Sami-language residents.

Source: Statistics Finland.



# Housing

## List of diagrams and tables

3.1	Dwellings by type of building 1970–2021 .....	24
3.2	Dwellings by tenure status: Helsinki 1950–2021. Helsinki Region, Tampere, Turku, Oulu and Finland 2021.....	25
3.3	Dwellings by size of dwelling (number of rooms) in 2000–2021 .....	26
3.4	Housing standard by number of rooms 2000–2021.....	26
3.5	Indicators of level of housing in 2000–2021 .....	27
3.6	Average rent of rented dwellings 2020 and 2021 .....	27
3.7	Price index of dwellings in 2020–2021 .....	28
3.8	Completed dwellings in Helsinki by type of building in 1985–2021.....	29
3.9	Completed dwellings in Helsinki by type of dwelling in 2000–2021 .....	30



	Dwellings total <sup>1</sup>	Type of house				
		Total	Small houses		Blocks of flats	Other buildings
			detached houses	terraced houses		
<b>Helsinki</b>						
1970	189,734	18,634	15,444	3,190	167,430	3,060
1980	221,341	22,54	14,621	7,919	194,547	4,254
1990	259,033	32,833	19,346	13,487	220,376	5,746
2000	296,013	37,664	21,472	16,192	253,315	5,034
2005	313,695	40,85	23,211	17,639	268,212	4,633
2010	328,164	43,349	25,008	18,341	280,886	3,929
2011	331,485	43,682	25,193	18,489	284,323	3,480
2012	336,409	44,055	25,451	18,604	288,603	3,751
2013	342,303	45,015	26,137	18,878	293,209	4,079
2014	346,751	45,732	26,601	19,131	296,750	4,269
2015	350,314	46,137	26,837	19,300	299,895	4,282
2016	356,975	47,595	27,618	19,977	305,053	4,327
2017	361,866	48,034	27,872	20,162	309,440	4,392
2018	367,680	48,323	27,632	20,691	315,094	4,263
2019	371,295	48,429	27,587	20,842	318,643	4,223
2020	376,065	48,067	27,437	20,630	323,197	4,801
2021	382,153	48,376	27,631	20,745	328,961	4,816
		%				
1970	100	9.8	8.1	1.7	88.2	1.6
1980	100	10.2	6.6	3.6	87.9	1.9
1990	100	12.7	7.5	5.2	85.1	2.2
2000	100	12.7	7.3	5.5	85.6	1.7
2005	100	13.0	7.4	5.6	85.5	1.5
2010	100	13.2	7.6	5.6	85.6	1.2
2011	100	13.2	7.6	5.6	85.8	1.0
2012	100	13.1	7.6	5.5	85.8	1.1
2013	100	13.2	7.6	5.5	85.7	1.2
2014	100	13.2	7.7	5.5	85.6	1.2
2015	100	13.2	7.7	5.5	85.6	1.2
2016	100	13.3	7.7	5.6	85.5	1.2
2017	100	13.3	7.7	5.6	85.5	1.2
2018	100	13.3	7.7	5.6	85.5	1.2
2019	100	13.2	7.6	5.6	85.7	1.1
2020	100	12.8	7.3	5.5	85.9	1.3
2021	100	12.7	7.2	5.4	86.1	1.3
<b>2021</b>						
Rest of Helsinki Metropolitan Area	100	35.3	23.2	12.2	64.0	0.7
Helsinki Region	100	29.6	19.7	9.9	69.4	1.1
Tampere	100	22.4	12.9	9.5	76.0	1.6
Turku	100	23.9	12.2	11.8	74.4	1.7
Oulu	100	43.6	28.6	15.0	55.0	1.4
<b>Finland, total</b>	<b>100</b>	<b>50.9</b>	<b>37.5</b>	<b>13.3</b>	<b>47.3</b>	<b>1.9</b>

<sup>1</sup> Including dwellings whose type of house is unknown.

Source: Censuses and Statistics Finland's Area Data Base.

## 3.2

## Dwellings by tenure status: Helsinki 1950–2021. Helsinki Region, Tampere, Turku, Oulu and Finland 2021

	All dwellings	Owner occupied	Rented	of which		Tenant-owned dwelling status	Other or unknown tenure
				arava social housing	other rented dwelling		
1950	105,883	25,748	79,744				391
1960	145,470	59,312	83,900				2,258
1970	189,734	81,618	102,079				6,037
1980	221,341	110,095	94,444				16,802
1990	259,033	141,785	98,670	42,803	55,867	..	22,893
2000	296,013	128,020	138,533	65,838	72,695	4,752	24,708
2005	313,695	141,165	141,277	69,855	71,422	6,300	24,953
2010 <sup>1</sup>	328,164	146,000	146,647	69,877	76,770	7,152	28,365
2015	350,314	148,302	162,215	69,794	92,421	9,000	30,797
2020	376,065	160,034	177,964	68,635	109,329	11,914	26,153
2021	382,153	159,836	181,233	69,362	111,871	12,150	28,934
	%						
1950	100	24.3	75.3				0.4
1960	100	40.8	57.7				1.6
1970	100	43.0	53.8				3.2
1980	100	49.7	42.7				7.6
1990	100	54.7	38.1	16.5	21.6	..	8.8
2000	100	43.2	46.8	22.2	24.6	1.6	8.3
2005	100	45.0	45.0	22.3	22.8	2.0	8.0
2010 <sup>1</sup>	100	44.5	44.7	21.3	23.4	2.2	8.6
2015	100	42.3	46.3	19.9	26.4	2.6	8.8
2020	100	42.6	47.3	18.3	29.1	3.2	7.0
2021	100	41.8	47.4	18.2	29.3	3.2	7.6
2021							
Rest of Helsinki Metropolitan Area	100	49.7	39.8	14.9	24.9	4.1	6.4
Helsinki Region	100	48.4	40.9	15.4	25.5	3.5	7.2
Tampere	100	42.3	48.1	12.6	35.5	2.5	7.1
Turku	100	41.6	47.4	13.2	34.2	2.0	9.0
Oulu	100	50.0	41.2	11.7	29.5	1.6	7.2
<b>Finland total</b>	<b>100</b>	<b>54.6</b>	<b>33.0</b>	<b>10.8</b>	<b>22.1</b>	<b>1.7</b>	<b>10.8</b>

<sup>1</sup> Since 2009 statistics on arava and interest-subsidised dwellings account for those dwellings released from tenant income restrictions.

<sup>2</sup> In 2010 Statistics Finland adjusted the tenure status of arava and interest-subsidised dwellings.

<sup>3</sup> Dwellings built using the state's short-term interest subsidy have been classified as "other rented dwellings".

Source: Censuses and Statistics Finland's dwelling statistics.

# 3.3

## Dwellings by size of dwelling (number of rooms) in 2000–2021

	All dwellings <sup>1</sup>	Number of rooms, excl. kitchen				
		1	2	3	4	5+
<b>Helsinki</b>						
2000	296,013	71,996	108,225	63,378	33,856	16,888
2005	313,695	74,262	114,330	67,671	36,798	18,558
2010	328,164	76,349	119,025	71,259	39,268	20,228
2015	350,314	80,348	127,182	77,020	42,411	21,694
2020	377 122	86,667	136,195	83,476	45,865	22,805
2021	382,153	88,696	137,728	85,207	46,779	23,115
2000	100	24.3	36.6	21.4	11.4	5.7
2005	100	23.7	36.4	21.6	11.7	5.9
2010	100	23.3	36.3	21.7	12.0	6.2
2015	100	22.9	36.3	22.0	12.1	6.2
2020	100	23.0	36.1	22.1	12.2	6.0
2021	100	23.2	36.0	22.3	12.2	6.1
2021						
Rest of Helsinki Metropolitan Area	100	14.2	31.0	24.9	17.6	12.1
Helsinki Region	100	17.9	32.5	23.2	15.6	10.6
Tampere	100	24.1	36.6	20.6	11.5	6.7
Turku	100	23.6	36.6	21.9	11.3	6.4
Oulu	100	16.9	31.6	21.6	15.3	14.5
<b>Finland, total</b>	<b>100</b>	<b>15.6</b>	<b>30.0</b>	<b>22.1</b>	<b>17.8</b>	<b>14.1</b>

<sup>1</sup>Incl. dwellings whose number of rooms is unknown.

Source: Censuses and Statistics Finland's dwelling statistics.

# 3.4

## Housing standard by number of rooms 2000–2021

	Dwelling house-holds total	Number of rooms, excl. kitchen						
		1	2	3	4	5	6	7+
<b>Residents per dwelling</b>								
2000	1.9	1.2	1.6	2.4	2.9	3.1	3.0	3.3
2005	1.9	1.2	1.5	2.3	2.9	3.0	3.0	3.3
2010	1.9	1.2	1.5	2.2	2.8	3.0	3.0	3.4
2015	1.9	1.2	1.5	2.3	2.8	3.0	3.0	3.1
2020	1.8	1.1	1.5	2.2	2.8	3.0	2.9	3.0
2021	1.8	1.1	1.5	2.2	2.8	3.0	2.9	2.9
<b>Residents per 100 rooms</b>								
2000	79	119	78	80	74	61	50	43
2005	76	115	75	76	72	61	49	43
2010	76	118	75	75	71	61	49	44
2015	76	118	77	76	71	60	49	45
2020	75	115	75	75	70	59	49	40
2021	75	114	74	74	70	59	49	39

Source: Censuses and Statistics Finland's statistics on dwelling stock.

# 3.5

## Indicators of level of housing in 2000–2021

	2000	2005	2010	2015	2020	2021
Dwelling stock	296,013	313,695	328,164	350,314	376,065	382,153
Dwelling population	531,287	540,094	566,040	603,965	637,971	639,675
<b>Average size of dwellings</b>						
Rooms per dwelling, kitchen incl.						
Floor area per dwelling, m <sup>2</sup>	61.8	62.3	63.0	63.3	63.1	62.9
<b>Housing density</b>						
Persons per room, kitchen incl.	62.3	63.0	63.7	63.6	63.6	63.6
Persons per room, kitchen excl.	0.79	0.76	0.75	0.76	0.76	0.75
Floor area per person, m <sup>2</sup>	32.6	34.0	34.2	33.9	34.4	34.5
Persons per dwelling	1.91	1.85	1.86	1.88	1.85	1.84
<b>Crowded housing</b>						
Norm 4 <sup>1</sup>						
Dwelling households, % <sup>2</sup>	12.4	9.8	10.3	10.8	9.9	9.6
Persons, % <sup>3</sup>	23.3	19.2	19.8	20.9	19.4	19.4
<b>Inhabitants in inadequately equipped dwellings</b>						
Persons living in inadequately equipped dwellings	13,005	13,118	18,261	16,733	14,785	13,353
Percentage	2.4	2.4	3.2	2.8	2.3	2.1

<sup>1</sup> Norm 4: more than 1 person per room, when the kitchen is not reckoned as a room.

<sup>2</sup> Proportion of dwelling households.

<sup>3</sup> Proportion of the population living in dwellings.

Source: Censuses. Statistics Finland's statistics on housing stock and housing conditions.

# 3.6

## Average rent of rented dwellings 2020 and 2021

<i>Euro/m<sup>2</sup>/month</i>	Helsinki		Espoo	Vantaa	Tampere	Turku	Outer Helsinki region	Finland
	2020	2021	2021	2021	2021	2021	2021	2021
<b>All dwellings</b>	<b>18.33</b>	<b>18.45</b>	<b>16.59</b>	<b>16.75</b>	<b>14.85</b>	<b>13.91</b>	<b>14.26</b>	<b>14.13</b>
<i>Number of rooms</i>								
1	24.27	24.54	21.24	21.49	18.29	17.30	17.47	17.81
2	17.87	17.81	16.71	16.41	14.15	13.42	13.86	13.60
3+	15.07	15.38	14.69	14.87	12.50	11.30	12.83	12.44
<b>Market-financed dwellings</b>	<b>21.32</b>	<b>21.48</b>	<b>18.44</b>	<b>18.19</b>	<b>15.50</b>	<b>14.64</b>	<b>15.02</b>	<b>15.18</b>
<i>Number of rooms</i>								
1	26.33	26.69	23.25	23.11	19.12	17.90	18.55	19.23
2	19.98	20.14	18.19	17.54	14.51	13.89	14.41	14.37
3+	18.04	18.26	16.34	15.99	13.02	11.87	13.26	13.08
<b>State-financed dwellings</b>	<b>13.20</b>	<b>13.29</b>	<b>13.49</b>	<b>13.78</b>	<b>12.43</b>	<b>11.55</b>	<b>12.78</b>	<b>11.93</b>
<i>Number of rooms</i>								
1	15.69	15.65	16.14	15.72	14.06	13.91	14.15	13.28
2	13.56	13.55	13.74	13.94	12.58	11.81	12.89	11.88
3+	12.36	12.50	12.67	13.11	11.32	10.18	12.11	11.44
<b>New rental contracts</b>								
<b>Market-financed dwellings</b>	<b>22.81</b>	<b>22.57</b>	<b>19.27</b>	<b>18.84</b>	<b>16.27</b>	<b>15.57</b>	<b>15.68</b>	<b>16.21</b>
<i>Number of rooms</i>								
1	27.80	27.56	23.95	24.16	19.90	18.78	19.23	20.36
2	21.06	20.84	18.74	17.69	15.07	14.45	14.94	15.09
3+	19.58	19.47	17.07	16.42	13.52	12.85	13.62	14.04

Source: Statistics Finland's statistics on rents.

## 3.7

## Price index of dwellings in 2020–2021

Year, quarter	Helsinki	Espoo and Kauniainen	Vantaa	Outer Helsinki Region	Tampere	Turku	Finland
2020=100							
2021	106.0	105.8	103.1	102.9	105.2	105.4	104.1
2020							
I	98.3	99.0	98.8	99.4	97.9	99.3	99.0
II	100.2	99.6	100.5	99.1	99.8	99.5	99.9
III	100.2	99.4	100.6	99.8	100.7	99.6	100.3
IV	101.3	102.0	100.1	101.6	101.6	101.6	100.8
2021							
I	104.2	104.0	101.3	101.1	102.1	102.0	102.2
II	106.5	105.8	103.8	104.2	105.6	106.8	104.7
III	106.0	106.7	103.2	103.8	105.9	105.7	104.6
IV	107.4	106.7	104.2	102.6	107.1	107.3	104.9

Source: Statistics Finland's statistics on rents.

## 3.8

Completed dwellings in Helsinki by type of building in 1985–2021<sup>1</sup>

	Type of building						
	Total	Detached houses	Detached terraced houses	Blocks of flats	Others	State financed total	Built by the city, total
<b>Dwellings</b>							
<i>Annual average</i>							
1985–1989	4,211	656	612	2,913	29	1,695	1,328
1990–1994	3,974	391	272	3,285	27	2,793	1,633
1995–1999	3,457	290	194	2,961	12	2,685	1,150
2000–2004	3,822	369	343	3,091	18	1,783	1,012
2005–2009	2,513	286	154	2,041	33	664	478
2010–2014	3,671	279	170	3,206	16	1,382	705
2015–2019	4,583	285	228	4,024	46	1,409	926
<i>Annually</i>							
2000	4,853	365	440	4,048	0	2,656	1,182
2005	2,698	366	190	2,003	139	660	513
2010	2,289	278	134	1,876	1	574	306
2011	2,881	259	233	2,386	4	899	748
2012	2,451	295	150	1,988	18	432	418
2013	2,245	230	62	1,952	1	614	403
2014	3,679	334	254	3,075	16	1,371	1,000
2015	3,718	281	187	3,247	3	823	522
2016	3,985	256	232	3,326	171	954	482
2017	4,520	248	171	4,094	7	1,502	838
2018	4,538	290	290	3,928	30	1,739	1,453
2019	6,156	350	259	5,526	21	2,027	1,334
2020	6,899	356	218	6,313	12	1,630	1,466
2021	6,815	315	150	6,289	61	1,347	928
<b>Housing, floor area, m<sup>2</sup></b>							
<i>Annual average</i>							
1985–1989	287,477	64,596	50,347	170,842	1,692	102,320	76,669
1990–1994	270,615	41,674	22,651	204,233	2,057	176,917	102,637
1995–1999	236,495	33,142	17,364	185,275	715	169,026	72,776
2000–2004	270,429	44,624	30,712	194,082	1,021	111,898	68,390
2005–2009	191,168	35,796	15,351	138,099	1,922	38,190	33,230
2010–2014	248,986	35,136	15,320	197,363	1,144	82,771	52,241
2015–2019	280,741	32,623	19,728	225,647	2,743	79,861	59,782
<i>Annually</i>							
2000	332,680	41,316	40,259	251,149	0	164,736	79,177
2005	200,208	46,791	17,784	127,767	7,866	34,585	32,905
2010	140,330	23,387	6,304	109,818	821	67,521	26,132
2011	239,687	34,955	14,076	190,622	34	47,017	30,037
2012	301,813	40,157	11,907	249,365	384	81,100	54,658
2013	296,490	36,006	21,079	236,362	3,043	69,925	76,047
2014	266,608	41,173	23,235	200,764	1,436	82,791	74,333
2015	243,619	33,179	16,721	193,375	344	49,985	32,684
2016	247,193	28,920	18,820	190,286	9,167	61,541	35,613
2017	273,537	29,019	14,559	227,728	2,231	85,069	57,485
2018	274,454	32,733	25,814	215,019	888	98,664	92,229
2019	364,900	39,265	22,724	301,826	1,085	110,657	80,900
2020	400,176	40,254	18,228	338,124	3,570	91,682	90,943
2021	370,322	35,374	11,545	320,850	2,553	70,425	54,203

<sup>1</sup>New dwellings and extensions, not changes in the purpose of use.

Source: City of Helsinki Executive Office.

## 3.9

## Completed dwellings in Helsinki by type of dwelling in 2000–2021

	Dwellings total	1 room	2 rooms	3 rooms	4 rooms	5 rooms	6 rooms	Average size, m <sup>2</sup>
<b>New dwellings and extensions to dwellings</b>								
2000	4,853	629	1,875	1,170	856	280	43	68.2
2005	2,697	344	966	632	510	180	65	74.2
2006	2,289	367	832	492	406	141	51	71.4
2007	2,881	520	804	734	575	184	64	74.8
2008	2,451	202	842	712	502	129	64	81.0
2009	2,245	202	688	679	446	162	68	79.4
2010	2,059	411	747	500	246	122	33	68.2
2011	3,656	580	1,495	922	447	158	54	65.7
2012	4,643	885	1,796	1,183	540	165	74	65.0
2013	4,320	681	1,587	1,142	668	197	45	68.6
2014	3,679	592	1,129	1,014	672	224	48	72.5
2015	3,718	655	1,421	997	454	149	42	65.5
2016	3,985	833	1,360	987	615	152	38	62.0
2017	4,520	816	1,943	1,071	525	122	43	60.5
2018	4,538	1,015	1,569	1,064	634	227	29	60.5
2019	6,156	1,551	1,958	1,591	818	207	31	59.3
2020	6,899	1,813	2,211	1,654	919	254	48	58.0
2021	6,815	2,090	2,120	1,598	791	187	29	54.3
<b>Changed principal use</b>								
2000	245	37	144	38	23	1	2	61.2
2005	156	67	57	13	7	9	3	59.8
2006	208	44	91	34	25	12	2	73.3
2007	427	128	169	81	36	9	4	68.4
2008	336	94	104	79	28	22	9	81.4
2009	267	82	68	60	33	14	10	87.9
2010	202	58	70	37	23	5	9	79.5
2011	426	114	195	78	29	5	5	62.0
2012	532	188	211	82	35	13	3	56.7
2013	236	72	108	33	14	4	5	60.4
2014	306	122	105	49	23	5	2	62.1
2015	341	120	130	54	18	17	2	64.0
2016	410	164	138	63	20	12	13	60.9
2017	370	188	114	43	18	2	5	53.6
2018	263	140	75	21	19	5	3	51.8
2019	580	285	184	74	19	13	5	52.4
2020	381	141	101	94	31	6	8	58.2
2021	290	80	132	47	15	2	14	75.6

Source: City of Helsinki Executive Office.

# Transport and Tourism

## List of diagrams and tables

4.1	Public transport in Helsinki 2010–2021 .....	32
4.2	Motor vehicles registered in Helsinki on 31 Dec. 1995–2021.....	32
4.3	Road traffic accidents reported to the police: Helsinki 1995–2021 Espoo, Vantaa, Tampere, Turku, Oulu and Finland overall 2021.....	33
4.4	Hotels and overnight stays in Helsinki 2000–2021 .....	33
4.5	Driving licences 2000–2021 .....	34



## 4.1

## Public transport in Helsinki 2010–2021

	2010	2015	2019	2020	2021
<b>Helsinki City Transport</b>					
Trams	93	91	122	122	123
Metro coaches <sup>1</sup>	90	90	45	45	45
Seat kilometres, 1,000					
Trams	540,000	594,800	779,000	751,300	728,000
Metro	2,038,000	2,165,500	3,477,000	3,430,200	3,256,700
Trips 1,000					
Trams	57,091	62,128	92,600	34,900	31,500
Metro	54,496	55,230	56,800	60,400	56,000
Trips on average per service day					
Trams	151,378	153,417	155,61	95,616	86,301
Metro	151,378	153,417	155,61	165,479	165,479
..					
<b>Tendered bus services provided for Helsinki Regional Transport Authority HSL</b>					
	2010	2015	2019	2020	
Services within Helsinki					
Trips	86,200	84,987	77,500	45,400	

<sup>1</sup> The concept of "metro train unit" has changed with the introduction of new metro trains. The new trains form a single integrated space.

Source: Helsinki Regional Transport Authority HSL.

## 4.2

## Motor vehicles registered in Helsinki on 31 Dec. 1995–2021

	1995	2000	2005	2010	2015	2021
Cars	157,544	186,452	204,589	232,515	253,528	282,239
of which in professional use	1,214	1,080	1,051	1,167	1,105	...
Lorries/trucks	3,429	5,100	5,893	7,380	9,350	10,468
Vans	14,974	16,957	19,557	24,303	30,915	37,295
Buses	930	1,626	1,458	1,583	1,650	2,155
Special cars	1,388	998	643	510	484	472
<b>Vehicles total</b>	<b>178,265</b>	<b>211,133</b>	<b>232,140</b>	<b>266,291</b>	<b>295,927</b>	<b>332,629</b>
per 1,000 inhabitants	340	380	414	452	471	506
of which						
cars	300	336	365	395	404	429
Motor cycles	5,534	7,650	11,224	15,216	16,994	18,638
<b>Motor vehicles total</b>	<b>183,799</b>	<b>218,783</b>	<b>243,364</b>	<b>281,507</b>	<b>312,921</b>	<b>351,267</b>

Source: Statistics Finland.

## 4.3

### Road traffic accidents reported to the police: Helsinki 1995–2021, Espoo, Vantaa, Tampere, Turku, Oulu and Finland overall 2021

	Accidents leading to casualties		Victims			
	Total	Per 1,000 inhabitants	Killed	Injured	Total	Per 1,000 inhabitants
Helsinki						
1995	812	1.5	7	987	994	1.9
2000	703	1.3	16	867	883	1.5
2005	552	1.0	9	721	730	1.3
2010	545	0.9	5	669	674	1.1
2015	383	0.6	12	443	455	0.7
2020	202	0	8	352	360	1
2021	277	0	6	316	322	1
Espoo	81	0	3	100	103	0
Vantaa	117	0	4	148	152	1
Tampere	97	0	5	113	118	0
Turku	98	1	2	108	110	1
Oulu	80	0	2	90	92	0
<b>Finland, total</b>	<b>3,226</b>	<b>1</b>	<b>225</b>	<b>3,863</b>	<b>4,088</b>	<b>1</b>

Source: Liikenneturva. Statistics Finland. Transport and tourism. Road traffic accidents.

## 4.4

### Hotels and overnight stays in Helsinki 2000–2021

	2000	2010	2015	2020	2021
Accommodation establishments on 1 Jan.	60	63	60	76	76
of which hotels	47	55	54	67	68
Rooms	7,577	8,843	9,292	12,150	12,689
Beds	14,580	17,605	17,993	24,128	25,203
Helsinki's proportion of the capacity of accommodation establishments	10	11	11	14	14
of the hotel capacity, % <sup>1</sup>	12	14	15	18	18
Clients	1,430,256	1,821,799	2,065,596	916,901	1,198,870
Rooms	7,262	8,650	9,192	11,722	10,343
Beds	13,758	16,922	17,492	22,766	20,148
Utilisation rate					
percentage of room capacity	68	67	70	35	34
Overnight stays, total	2,604,647	3,187,136	3,461,958	1,616,635	2,118,715
of which					
foreign nationals, %	58.0	53.6	53.2	30.6	26.2

<sup>1</sup> Number of beds.

Source: Statistics Finland.

## 4.5

## Driving licences 2000–2021

	2000	2005	2010	2015	2020	2021
Valid driving licences, total	321,597	335,758	358,572	373,505	390,882	393,611
Men	172,287	178,100	188,214	194,685	202,804	203,780
Women	149,310	157,658	170,358	178,820	188,078	189,831
% of Finnish driving licenses	10.2	10.4	10.0	10.1	10.4	10.4

Source: Traficom.

# Health care

## List of diagrams and tables

5.1	Persons having received health care services provided by the City of Helsinki, 2000–2020 .....	36
5.2	Non-hospital health care services provided by Helsinki City (including outsourced services) 2010–2020 .....	37
5.3	Helsinki residents having received reimbursements of the fees charged by doctors practising privately 2021.....	38
5.4	Use of private-sector health care services reimbursed by the National Health Insurance 2005–2021.....	38
5.6	National disability pensions by main group of disease 31 Dec. 2021.....	39
5.7	Deaths by cause of death1 (54-class) in 2020.....	40

## 5.1

## Persons having received health care services provided by the City of Helsinki, 2000–2020

	2000	2005	2010	2015	2020	Percentage of the population 2020
<b>Helsinki residents</b>						
<b>Health care total</b>	<b>418,616</b>	<b>417,599</b>	<b>437,503</b>	<b>457,571</b>	<b>512,804</b>	<b>78,1</b>
Outpatient primary health care	415,789	415,675	436,645	457,083	512,537	78,0
Inpatient care	66,951	62,803	58,647	49,250	46,539	7,1
<b>Primary health care</b>	<b>375,589</b>	<b>376,960</b>	<b>407,230</b>	<b>423,776</b>	<b>474,587</b>	<b>72,2</b>
Outpatient primary health care	372,815	374,962	405,912	423,529	474,336	72,2
Inpatient care	14,930	13,525	15,419	10,439	9,501	1,4
<b>Specialised health care total</b>	<b>188,968</b>	<b>172,984</b>	<b>187,075</b>	<b>207,590</b>	<b>258,173</b>	<b>39,3</b>
Outpatient primary health care	185,882	169,969	184,479	206,127	257,263	39,2
Inpatient care	59,100	55,881	49,237	45,649	42,882	6,5
<b>Specialised somatic healthcare</b>	<b>175,959</b>	<b>160,175</b>	<b>175,968</b>	<b>192,262</b>	<b>240,006</b>	<b>36,5</b>
Outpatient primary health care	172,893	157,262	173,478	190,815	239,122	36,4
Inpatient care	54,224	51,741	46,083	43,433	40,625	6,2
<b>Specialised psychiatric health care</b>	<b>21,430</b>	<b>20,230</b>	<b>20,832</b>	<b>29,083</b>	<b>37,105</b>	<b>5,6</b>
Outpatient primary health care	21,162	19,952	20,580	28,932	36,854	5,6
Inpatient care	4,313	3,865	3,663	2,748	2,776	0,4
<b>Non-Helsinki residents</b>						
<b>Total health care</b>	<b>11,348</b>	<b>14,774</b>	<b>25,696</b>	<b>33,888</b>	<b>25,728</b>	
Outpatient primary health care	11,154	14,750	25,661	33,860	25,683	
Inpatient care	75	104	267	292	112	
<b>Primary health care</b>	<b>10,722</b>	<b>14,289</b>	<b>24,618</b>	<b>31,800</b>	<b>24,859</b>	
Outpatient primary health care	10,675	14,270	24,531	31,791	24,841	
Inpatient care	66	38	168	65	60	
<b>Specialised health care total</b>	<b>559</b>	<b>698</b>	<b>1,689</b>	<b>3,146</b>	<b>1,387</b>	
Outpatient primary health care	551	694	1,661	3,110	1,351	
Inpatient care	9	66	101	244	56	
<b>Specialised somatic health care</b>	<b>435</b>	<b>294</b>	<b>1,158</b>	<b>2,165</b>	<b>537</b>	
Outpatient primary health care	435	294	1,158	2,138	534	
Inpatient care	–	–	–	201	11	
<b>Specialised psychiatric health care</b>	<b>125</b>	<b>412</b>	<b>596</b>	<b>1,114</b>	<b>865</b>	
Outpatient primary health care	117	408	568	1,104	832	
Inpatient care	9	66	101	43	45	

Earlier, neurological rehabilitation was included in basic health care, in 2015 in somatic special health care.

Note: The number of people having received care includes all those different persons (by identity number) that received care in the years 2000–2016 at Helsinki City health care facilities or at those of the Hospital District of Helsinki and Uusimaa. One and the same person may have consulted several different services during any given year, but they have been counted only once for each line.

Source: Social Services and Health Care Sector.

# 5.2

## Non-hospital health care services provided by Helsinki City (including outsourced services) 2010–2020

	2010	2015	2019	2020
<b>Helsinki residents having received outpatient health care</b>				
<b>Total</b>	<b>436,492</b>	<b>456,991</b>	<b>485,857</b>	<b>512,508</b>
Primary health care	405,930	423,524	440,938	474,335
Outpatient medical care	293,590	299,342	324,452	374,550
Public health centre emergency clinics	76,530	74,742	1,901	0
Maternity and child health clinics	51,929	64,569	68,671	69,509
Home care	17,043	17,865	15,455	15,692
Oral,health	154,534	179,956	182,513	140,287
Other primary health care	92,897	117,164	131,639	158,978
Specialised medical care	184,130	205,968	257,689	257,200
Specialised somatic medical care	173,251	190,775	240,393	239,122
Specialised psychiatric medical care	20,420	28,762	35,977	36,771
<b>Helsinki residents' outpatient consultations and treatment visits</b>				
<b>Total</b>	<b>5,099,551</b>	<b>6,902,146</b>	<b>7,253,408</b>	<b>7,479,807</b>
Primary health care	4,245,486	5,780,001	5,901,341	6,150,493
Outpatient medical care	1,146,772	1,501,233	1,674,490	1,812,706
Public health centre emergency clinics	119,481	124,671	2,366	0
Maternity and child health clinics	230,589	328,996	335,338	348,819
Home,care	2,042,287	2,846,122	2,911,472	3,131,335
Oral health	448,828	513,162	476,739	333,497
Other primary health care	257,529	466,123	500,936	524,136
Specialised medical care	854,065	1,122,145	1,352,067	1,329,314
Specialised somatic medical care	625,180	781,047	965,380	920,977
Specialised psychiatric medical care	228,885	341,098	386,687	408,337
<b>Non-resident.outpatient consultations and treatment visits in Helsinki</b>				
<b>Total</b>	<b>54,546</b>	<b>79,791</b>	<b>81,277</b>	<b>88,408</b>
Primary health care	51,170	73,117	74,086	78,168
Outpatient medical care	7,383	14,521	22,319	31,990
Public health centre emergency clinics	7,372	9,511	225	0
Maternity and child health clinics	1,220	3,980	5,322	5,959
Home care	1,075	1,634	1,594	1,691
Oral health	12,523	17,267	14,085	10,125
Other primary health care	21,597	26,209	30,541	28,403
Specialised medical care	3,376	6,674	7,191	10,240
Specialised somatic medical care	1,747	3,152	1,934	3,574
Specialised psychiatric medical care	1,629	3,522	5,257	6,666

Source: Social Services and Health Care Sector.

## 5.3

## Helsinki residents having received reimbursements of the fees charged by doctors practising privately 2021

Age	Private GPs or specialists		Private dental care	
	Persons	% of the population	Persons	% of the population
0–14	25,491	27.0	1,973	2.1
15–24	18,200	25.7	7,130	10.1
25–44	53,920	24.1	35,191	15.7
45–64	46,413	30.2	46,024	30.0
65+	50,560	43.6	46,987	40.5
<b>Total</b>	<b>194,584</b>	<b>29.6</b>	<b>137,305</b>	<b>20.9</b>

Source: Kela – The Social Insurance Institution of Finland. Kelasto reports.

## 5.4

## Use of private-sector health care services reimbursed by the National Health Insurance 2005–2021

	2005	2010	2015	2020	2021
Population <sup>1</sup>	560,625	588,549	628,208	656,920	658,457
<b>Doctors' fees</b>					
Number of visits, 1,000	525	557	543	466	500
Reimbursements, 1,000 euro <sup>2</sup>	15,346	14,637	12,283	8,077	8,431
per inhabitant, euro <sup>2</sup>	27.37	24.87	19.55	12.29	12.80
per visit, euro <sup>2</sup>	29.25	26.28	22.62	17.33	16.86
<b>Dentists' fees</b>					
Number of visits, 1,000	409	357	337	285	251
Reimbursements, 1,000 euro <sup>2</sup>	25,814	23,610	13,861	6,302	5,765
per inhabitant, euro <sup>2</sup>	46.04	40.12	22.06	9.60	8.76
per visit, euro <sup>2</sup>	63.11	6.22	41.13	22.10	22.97
<b>Examination and treatment</b>					
Decuctible visits, 1,000	188	240	443	364	436
Reimbursements, 1,000 euro <sup>2</sup>	14,971	14,843	11,265	6,492	12,033
per inhabitant, euro <sup>2</sup>	26.70	25.22	17.93	9.88	18.27
per visit, euro <sup>2</sup>	79.63	61.85	25.43	17.83	27.60
<b>Travel</b>					
Single journeys, 1,000	222	329	347	245	252
Reimbursements, 1,000 euro <sup>2</sup>	14,964	18,913	18,589	13,648	14,300
per inhabitant, euro <sup>2</sup>	26.69	32.13	29.59	20.78	21.72
per visit, euro <sup>2</sup>	67.52	57.49	53.57	55.71	56.75

<sup>1</sup> Population at year-end from Kela – the Social Insurance Institution of Finland's database.

<sup>2</sup> Based on rates in 2021

Source: Kela – The Social Insurance Institution of Finland.

# 5.5

## National disability pensions by main group of disease 31 Dec. 2021

	Helsinki		Finland	
	<i>All disability pensions</i>		<i>All disability pensions</i>	
	<i>Number</i>	<i>%</i>	<i>Number</i>	<i>%</i>
<b>Main disease groups altogether</b>	<b>15,545</b>	<b>100</b>	<b>185,991</b>	<b>100</b>
I Infectious or parasitic diseases	58	0.4	306	0.2
II Tumours	421	2.7	4,963	2.7
IV Diseases of internal secretion, nutrition or metabolism	195	1.3	2,461	1.3
V Disorders of mental health and behavior	9,613	61.8	100,527	54.0
VI Diseases of the nervous system	1,280	8.2	16,387	8.8
VII Diseases of the eye and its surrounding structures	190	1.2	1,904	1.0
IX Diseases of the cardio-vascular system	710	4.6	8,828	4.7
X Diseases of the respiratory system	114	0.7	1,501	0.8
XI Diseases of the gastro-intestinal system	73	0.5	1,080	0.6
XIII Diseases of, the musculo-skeletal and articular systems	1,627	10.5	32,719	17.6
XVII Congenital malformations, chromosome abnormalities, etc.	408	2.6	4,815	2.6
XIX Injuries, poisonings or consequences of certain other external impacts and articular systems	649	4.2	7,571	4.1
Others	207	1.3	2,929	1.6

Source: Joint statistics of Kela – The Social Insurance Institution of Finland – and the Finnish Centre for Pensions.



# 5.6

## Deaths by cause of death<sup>1</sup> (54-class) in 2020

	Persons deceased		Per 10,000 inhabitants	
	Total	Men %	Total	
			Helsinki	Finland
<b>Total</b>	<b>5,369</b>	<b>47.9</b>	<b>81.9</b>	<b>100.4</b>
Infectious or parasitic diseases	234	48.3	3.6	0.4
Tumours	1,274	50.2	19.4	24.3
Diseases of internal secretion. nutrition or metabolism	94	58.5	1.4	1.6
Dementia, Alzheimer's disease	997	30.4	15.2	19.3
Other diseases of the nervous and sensory system	226	44.7	3.4	3.8
Diseases of the cardio-vascular system <sup>2</sup>	1,555	47.4	23.7	33.4
Diseases of the respiratory system	197	58.9	3.0	3.2
Diseases of the gastro-intestinal system <sup>2</sup>	108	53.7	1.6	2.5
Urological and venereal diseases	11	63.6	0.2	0.3
Congenital malformations. chromosome abnormalities	15	46.7	0.2	0.3
Other diseases <sup>2</sup>	65	49.2	1.0	1.1
Unknown or ill-defined causes of death	44	72.7	0.7	0.4
Alcohol-related diseases and accidental alcohol poisoning	215	71.2	3.3	3.1
Accidents and violence <sup>2</sup>	320	65.3	4.9	5.6
No death certificate	14	64.3	0.2	0.2

<sup>1</sup> ICD-10 classification of causes of death.

<sup>2</sup> Except alcohol-related.

Source: Statistics Finland.

# Social welfare

## List of diagrams and tables

6.1	Child welfare 1995–2020.....	42
6.2	Benefits for families with children 1995–2021.....	42
6.3	Pensioners in the Helsinki Region, Tampere, Turku, Oulu and Finland 2021.....	43
6.4	Recipients of pensions in Helsinki on 31 Dec. 2000–2021.....	43

## 6.1

## Child welfare 1995–2020

	1995	2000	2005	2010	2015	2020
<b>Child welfare clients during the year</b>	<b>5,577</b>	<b>7,278</b>	<b>7,734</b>	<b>10,022</b>	<b>19,125</b>	<b>6,601</b>
of whom						
Receiving community care	4,578	6,276	6,969	9,356	18,085	5,574
Placements	1,917	2,326	2,431	2,474	2,084	2,106
Placed with an emergency care order and taken into care	1,296	1,603	1,909	1,923	1,777	1,775
of whom placed with an emergency care order	179	222	329	435	432	599
In residential care	..	1,337	1,478	1,511	972	1,031
In foster care	..	1,041	999	1,101	1,052	1,096
In professional family homes	..	116	87	117	159	193
<b>Children aged 0–17 in child welfare services, as % of total population of same age</b>	<b>5.1</b>	<b>6.4</b>	<b>6.9</b>	<b>8.3</b>	<b>17.5</b>	<b>5.1</b>
Receiving community care	4.1	5.5	6.1	8.3	16.5	4.2
Placed	1.8	2.1	2.2	2.2	1.8	1.7
Placed with an emergency care order and taken into care	1.3	1.5	1.8	1.8	1.5	1.5
<b>Young people aged 18–20 in child welfare services, as % of total population of same age</b>	<b>3.8</b>	<b>5.0</b>	<b>5.8</b>	<b>6.2</b>	<b>7.0</b>	<b>3.7</b>
Receiving community care	3.5	4.2	5.5	6.2	7.0	2.5
Placed	1.1	1.4	1.6	1.6	1.4	0.9
Placed with an emergency care order and taken into care	0.5	0.8	1.0	0.8	1.0	0.6

<sup>1</sup>Since a new social care act came into effect on 1 April 2015, child protection clients have decreased.

Source: Social Services and Health Care Division.

## 6.2

## Benefits for families with children 2005–2021

	2005	2010	2015	2020	2021
<b>Child benefits</b>					
<b>Families receiving child benefits</b>	<b>52,950</b>	<b>56,955</b>	<b>60,834</b>	<b>64,320</b>	<b>64,590</b>
Number of children in family					
1	26,831	29,250	30,691	31,134	31,199
2	19,185	20,421	22,341	24,838	25,031
3	5,391	5,574	5,910	6,250	6,268
4	1,046	1,094	1,280	1,471	1,466
5–	497	616	612	624	625
<b>Children conferring entitlement to child benefit<sup>1</sup></b>	<b>88,362</b>	<b>94,167</b>	<b>101,104</b>	<b>108,355</b>	<b>108,866</b>
Child benefits paid €1,000	123,401	1,174	2129,919	143,160	143,556
<b>Recipients (families) of maternity grants</b>	<b>5,879</b>	<b>6,726</b>	<b>6,990</b>	<b>6,935</b>	<b>6,552</b>
Total value of maternity grants, 1,000 euro <sup>3</sup>	1,137	1,174	1,239	1,524	1,435
of which value of maternity pack	773	853	925	1,099	1,056

<sup>1</sup> Including children in institutions.

<sup>2</sup> Due to a change in the legislation on child benefit, the amount of the benefit decreased by 8.1% as of January 2015.

<sup>3</sup> Nominal value.

Source: Kela – The Social Insurance Institution of Finland. Kelasto reports.

## 6.3

## Pensioners in the Helsinki Region, Tampere, Turku, Oulu and Finland 2021

	All pension recipients	Old-age pension	Disability pension	Part-time pension	Survivors' pension
<i>Total</i>					
Helsinki Metropolitan area	236,001	210,072	26,658	46	30,377
Rest of Helsinki Region	77,352	68,826	8,779	7	10,747
Helsinki Region	313,353	278,898	35,437	53	41,124
Tampere	56,948	49,551	7,642	5	7,808
Turku	49,100	43,033	6,248	5	6,906
Oulu	45,517	37,993	7,752	2	5,984
<b>Finland, total</b>	<b>1,537,549</b>	<b>1,357,891</b>	<b>185,991</b>	<b>119</b>	<b>228,565</b>

Source: Finnish Centre for Pensions

## 6.4

## Recipients of pensions in Helsinki on 31 Dec. 2000–2021

	2000	2005	2010	2015	2021
<b>Recipients of pensions in their own right</b>	<b>108,311</b>	<b>111,622</b>	<b>120,447</b>	<b>128,302</b>	<b>130,703</b>
of which					
Recipients on statutory earnings-related pension	99,842	105,303	114,034	121,207	128,078
Recipients of national pension <sup>1</sup>	88,415	52,713	38,148	36,389	36,391
Old-age pension	80,210	82,676	95,301	109,457	118,146
Disability pension	22,375	21,897	21,355	18,269	9,969
Unemployment pension	3,977	3,634	1,907	–	–
Part-time pension	3,231	4,039	2,940	1,223	36
<b>Percentage of residents having received pensions in their own right</b>					
<b>All recipients, aged 16 or older</b>	<b>23.2</b>	<b>23.5</b>	<b>23.9</b>	<b>24.0</b>	<b>24.2</b>
Aged 55–64, including part-time pensions	42.1	36.6	34.2	25.0	19.8
Aged 55–64, without part-time pensions	36.6	31.0	30.4	23.5	19.8
Recipients of old-age pensions, % of aged 16 or older	17.2	17.4	18.9	20.5	21.5
Recipients of disability pensions, % of aged 16–64	5.7	5.5	5.1	4.2	3.5
Average pension in one's own right 31.12. euros/month	1,225	1,454	1,704	2,008	2,094
<b>Other, national old agedisability and unemployment pension benefits</b>					
Child increase	–	–	877	874	699
Front-veteran's supplement	–	–	4,834	2,045	428
<b>Recipients of survivors' pensions</b>					
Surviving spouses	22,225	21,720	20,631	19,234	15,529
Children	2,622	2,409	2,186	1,811	1,447

<sup>1</sup> With effect from 1 January 2001, the cut national pensions and spouses supplement were discontinued.

Source: Finnish Centre for Pensions and The Social Insurance Institution of Finland. Statistical Yearbook of Pensioners in Finland.



# Education

## List of diagrams and tables

7.1	Children receiving early childhood education and care on 31 Dec. 2000–2021 .....	46
7.2	Comprehensive schools and general upper secondary schools 2015–2021 .....	47
7.3	Students and degrees at polytechnics in Helsinki Metropolitan Area 2021 .....	47
7.4	Students and degrees at universities in Helsinki Metropolitan Area in 2021 .....	48
7.5	Numbers of students at various levels of education in Helsinki 2000–2020 .....	48
7.6	Population 15 years of age and over by educational level and age 2000–2020 .....	49

	2000	2005	2010	2015	2020	2021
<b>Day care in municipal day-care centres</b>						
Municipal day-care centres	336	282	286	323	341	327
Children in day care, total 31. Dec	19,061	16,651	19,289	23,373	26,599	26,622
Children aged under 3	2,994	2,977	3,820	4,529	5,316	5,634
Children aged 3–6	15,376	13,607	15,431	18,791	21,218	20,806
Children aged 7	691	67	38	53	65	59
as % of total population of same age						
% of 1–2 year-olds	26.0	27.0	31.3	33.7	43.5	46.5
% of 3–6 year-olds	67.3	67.9	72.4	75.0	81.6	83.1
<b>Day care in municipal family day care</b>						
Children in day care, total 31. Dec	2,207	1,775	1,415	1,138	628	539
Children aged under 3	877	770	632	517	304	310
Children aged 3–6	1,214	947	761	618	319	229
Children aged 7	116	58	22	3	0	0
as % of total population of same age						
% of 1–2 year-olds	7.5	6.9	5.1	3.8	2.5	2.5
% of 3–6 year-olds	5.3	4.7	3.6	2.5	1.2	0.9
<b>Private early childhood education and care with contract of purchase</b>						
Private day-care centres with contract of purchase	52	42	39	10	–	–
Children from Helsinki in care	1,348	1,117	1,007	308	205	197
as % of children aged 1–6	3.9	3.6	3.0	0.8	0.5	0.2
<b>Private early childhood education and care<sup>1</sup></b>						
Private day-care centres	116	100	109	118	122	144
Places in private day-care centres	3,120	2,768	2,926	2,998	–	–

<sup>1</sup> Including private day-care centres with contract of purchase.

Source: Education Division.

## 7.2

## Comprehensive schools and general upper secondary schools 2015–2021

	2015	2018	2019	2020	2021
<b>All schools in Helsinki</b>	<b>178</b>	<b>165</b>	<b>165</b>	<b>145</b>	<b>143</b>
<b>City-owned schools</b>	<b>129</b>	<b>116</b>	<b>116</b>	<b>117</b>	<b>115</b>
of which					
<b>City's Finnish-language schools</b>	<b>110</b>	<b>99</b>	<b>99</b>	<b>100</b>	<b>98</b>
Comprehensive schools	98	87	87	88	86
Upper secondary general schools	11	11	11	11	11
Upper secondary general schools for adults	1	1	1	1	1
<b>City's Swedish-language schools</b>	<b>19</b>	<b>17</b>	<b>17</b>	<b>17</b>	<b>17</b>
Comprehensive schools	16	14	14	14	14
Upper secondary general schools	3	3	3	3	3
<b>State schools</b>	<b>11</b>	<b>11</b>	<b>11</b>	<b>6</b>	<b>6</b>
Comprehensive schools and upper secondary general schools	11	11	11	6	6
<b>Private schools with which the city has a contract</b>	<b>26</b>	<b>26</b>	<b>26</b>	<b>14</b>	<b>14</b>
Schools at comprehensive and general secondary level	26	26	26	14	14
<b>Private schools</b>	<b>12</b>	<b>12</b>	<b>12</b>	<b>8</b>	<b>8</b>
Comprehensive schools and upper secondary general schools	10	10	10	6	6
Upper secondary general schools for adults	2	2	2	2	2

Source: Education Division.

## 7.3

## Students and degrees at polytechnics in Helsinki Metropolitan Area 2021

	Students		Degrees	
	<i>New</i>	<i>All</i>	<i>Polytechnic bachelor's degree</i>	<i>Higher polytechnic degree</i>
Arcada University of Applied Sciences (primarily Swedish-speaking)	739	2,685	458	76
Diaconia University of Applied Sciences (Diak)	1,030	3,228	679	58
Haaga-Helia University of Applied Sciences	2,999	10,110	1,981	329
Humak University of Applied Sciences	754	2,009	272	59
Laurea University of Applied Sciences	3,224	8,552	1,683	324
Metropolia University of Applied Sciences	4,767	16,736	2,711	516

Source: Statistics Finland.



## 7.4

## Students and degrees at universities in Helsinki Metropolitan Area in 2021

	Students		Degrees	
	<i>New</i>	<i>All</i>	<i>Lower and higher university level<sup>1</sup></i>	<i>Doctorate level</i>
University of Helsinki	5,807	30,821	4,879	422
Aalto University	3,557	18,848	3,340	182
Hanken School of Economics	518	2,615	587	13
University of the Arts <sup>2</sup>	396	1,968	481	15
National Defence University	411	1,186	231	4

<sup>1</sup> Also including physicians' specialisation diplomas.

<sup>2</sup> The Theatre Academy, Academy of Fine Arts and Sibelius Academy merged into the University of the Arts in 2013.

Source: Statistics Finland.

## 7.5

## Numbers of students at various levels of education in Helsinki 2000–2020

	Comprehensive school education	General upper secondary school	Vocational education	Polytechnic education	University education
2000	49,591	17,411	16,492	16,889	45,439
2005	49,485	16,408	30,406	19,573	47,449
2010	46,322	16,838	32,614	21,384	45,900
2011	46,064	16,947	34,874	21,605	46,152
2012	46,185	16,371	34,704	21,983	46,063
2013	46,807	16,236	38,879	22,271	45,056
2014	47,645	15,933	41,524	22,404	44,623
2015	48,719	15,867	43,370	22,665	42,250
2016	49,779	15,788	44,003	23,093	41,962
2017	51,199	15,909	43,164	23,952	41,240
2018	52,946	15,893	42,633	21,783	39,747
2019	55,833	16,684	45,186	21,976	38,224
2020	55,688	17,094	40,108	23,024	38,190

Source: Statistics Finland.

## 7.6

## Population 15 years of age and over by educational level and age 2000–2020

Year	Total	of whom women	Age					
			15–24	25–34	35–44	45–64	65–	
<b>Population aged 15 or older</b>								
2000	471,692	257,019	71,689	99,083	86,249	140,105	74,566	
2005	480,875	259,982	72,357	96,816	85,374	148,466	77,862	
2010	508,847	273,096	76,907	108,354	80,356	155,164	88,066	
2015	540,300	288,195	75,722	118,848	88,456	153,210	104,064	
2020	562,804	298,761	70,170	123,679	101,962	152,687	114,306	
<b>Population with educational qualification (ISCED 3 or more)</b>								
2000	311,475	168,382	40,012	81,784	68,463	91,484	29,732	
2005	329,298	178,804	38,280	80,685	68,768	106,473	35,092	
2010	360,129	195,907	40,521	89,104	64,888	118,939	46,677	
2015	397,018	215,950	41,965	96,801	72,084	122,457	63,711	
2020	433,274	235,491	37,696	104,092	85,769	127,303	78,414	
<b>Secondary (ISCED 3–4), total</b>								
2000	156,561	81,667	36,574	38,849	29,947	38,531	12,660	
2005	163,623	84,677	36,384	39,558	28,940	44,262	14,479	
2010	169,328	86,309	37,293	39,624	24,834	49,386	18,191	
2015	177,938	89,594	37,855	41,035	25,482	49,430	24,136	
2020	179,370	89,569	32,922	41,452	28,158	47,806	29,032	
<b>Upper secondary general education</b>								
2000	67,922	36,446	28,339	18,763	8,831	8,896	3,093	
2005	71,695	37,862	28,093	20,833	8,815	10,725	3,229	
2010	70,449	36,099	27,838	18,707	7,920	11,944	4,040	
2015	66,846	33,472	25,510	16,299	8,091	11,529	5,417	
2020	64,080	31,887	23,667	14,102	7,905	11,576	6,830	
<b>Secondary vocational education</b>								
2000	88,639	45,221	8,235	20,086	21,116	29,635	9,567	
2005	91,928	46,815	8,291	18,725	20,125	33,537	11,250	
2010	98,879	50,210	9,455	20,917	16,914	37,442	14,151	
2015	111,092	56,122	12,345	24,736	17,391	37,901	18,719	
2020	115,290	57,682	9,255	27,350	20,253	36,230	22,202	
<b>Tertiary education (ISCED 5–6), total</b>								
2000	154,914	86,715	3,438	42,935	38,516	52,953	17,072	
2005	165,675	94,127	1,896	41,127	39,828	62,211	20,613	
2010	190,801	109,598	3,228	49,480	40,054	69,553	28,486	
2015	219,080	126,356	4,110	55,766	46,602	73,027	39,575	
2020	253,904	145,922	4,774	62,640	57,611	79,497	49,382	

## 7.6

## Population 15 years of age and over by educational level and age 2000–2020 (continues)

	Year	Total	of whom women	Age				
				15–24	25–34	35–44	45–64	65–
of which								
Lowest-level tertiary education (ISCED 5B)								
	2000	61,745	39,099	1,728	17,014	16,577	19,790	6,636
	2005	53,406	34,037	32	6,453	15,387	23,527	8,007
	2010	47,708	30,426	28	1,225	9,971	25,813	10,671
	2015	44,023	28,289	20	246	4,356	25,052	14,349
	2020	40,651	26,247	4	209	1,114	22,094	17,230
Lower degree (ISCED 5A)								
	2000	31,864	17,590	1,300	8,090	5,621	12,632	4,221
	2005	42,355	24,422	1,539	16,371	6,342	13,106	4,997
	2010	57,985	34,304	2,999	25,202	9,442	13,562	6,780
	2015	72,838	42,676	3,874	29,827	16,183	13,611	9,343
	2020	87,418	50,428	4,506	32,878	22,235	16,359	11,440
Higher degree (ISCED 5A)								
	2000	54,820	27,755	408	17,013	14,608	17,380	5,411
	2005	62,239	32,720	325	17,614	16,139	21,728	6,433
	2010	75,845	40,947	200	22,250	18,479	25,758	9,158
	2015	91,220	50,503	216	24,935	23,434	29,468	13,167
	2020	112,433	62,981	264	28,764	30,915	35,398	17,092
Doctorate level (ISCED 6)								
	2000	6,485	2,271	2	818	1,710	3,151	804
	2005	7,675	2,948	0	689	1,960	3,850	1,176
	2010	9,263	3,921	1	803	2,162	4,420	1,877
	2015	10,999	4,888	0	758	2,629	4,896	2,716
	2020	13,402	6,266	0	789	3,347	5,646	3,620
Basic education only (ISCED 1–2) or education unknown								
	2000	160,217	88,637	31,677	17,299	17,786	48,621	44,834
	2005	151,577	81,178	34,077	16,131	16,606	41,993	42,770
	2010	148,718	77,189	36,386	19,250	15,468	36,225	41,389
	2015	143,282	72,245	33,757	22,047	16,372	30,753	40,353
	2020	129,530	63,270	32,474	19,587	16,193	25,384	35,892

Source: Statistics Finland.

# Culture and leisure

## List of diagrams and tables

- 8.1 Number of visitors at prominent tourist attractions in Helsinki in 2000–2021..... 52
- 8.2 Helsinki City library statistics 2000–2021..... 53
- 8.3 Sports and recreation 2000–2021 ..... 54



## 8.1

## Number of visitors at prominent tourist attractions in Helsinki in 2000–2021

	2000	2005	2010	2015	2021
<i>Tourist attraction</i>					
Linnanmäki Amusement Park <sup>1</sup>	1,055,532	1,197,768	1,055,000	1,000,000	700,000
Suomenlinna Sea Fortress	671,805	632,000	736,000	931,000	563,000
Helsinki Zoo	557,697	483,202	436,135	523,602	397,286
Temppeliaukio Church	495,120	568,440	508,393	500,000	55,383
Uspensky Cathedral	450,400	500,500	500,000	400,000	30,000
Helsinki Music Festival	321,872	254,454	271,896	295,970	25,000
Casino Helsinki	228,067	274,843	292,023	295,261	89,558
Helsinki Cathedral and Crypt	312,421	399,278	452,300	500,000	30,000
University of Helsinki Botanical Garden	58,226	74,172	28,400	38,713	139,000
Seurasaari Open-Air Museum	51,683	40,385	30,606	41,031	15,396

<sup>1</sup> Also includes the visitors at the events Carnival of Light, *Jouluhattara* Christmas event, and *Jäähelmi* winter event.

Source: The statistics of each separate tourist attraction.

	2000	2010	2015	2020	2021
<b>Libraries</b>	<b>37</b>	<b>37</b>	<b>36</b>	<b>37</b>	<b>37</b>
Mobile libraries (buses)	2	2	2	2	2
Libraries in hospitals etc.	17	10	10	6	6
<b>Books (incl. music) on 31 Dec.</b>	<b>1,806,255</b>	<b>1,612,439</b>	<b>1,562,299</b>	<b>1,566,144</b>	<b>1,595,914</b>
in Finnish	1,389,859	1,236,731	1,203,615	1,214,143	1,207,921
in Swedish	191,128	145,729	129,525	132,695	135,054
in other languages	188,158	199,020	203,166	219,306	224,008
music scores	37,110	30,959	25,993	28,650	28,931
<b>Sound recordings</b>	<b>161,141</b>	<b>225,654</b>	<b>200,480</b>	<b>113,176</b>	<b>119,567</b>
<b>Image recordings</b>	<b>29,404</b>	<b>42,487</b>	<b>55,105</b>	<b>49,509</b>	<b>46,282</b>
<b>Others</b>	<b>33,582</b>	<b>15,741</b>	<b>16,826</b>	<b>23,955</b>	<b>24,232</b>
<b>Newspaper and periodical subscriptions</b>	<b>5,949</b>	<b>5,005</b>	<b>4,715</b>	<b>3,402</b>	<b>3,258</b>
<b>Borrowers</b>	<b>243,819</b>	<b>211,309</b>	<b>235,051</b>	<b>239,185</b>	<b>213,816</b>
per 1,000 inhabitants	443	359	374	366	325
<b>Home service clients</b>	<b>302</b>	<b>464</b>	<b>410</b>	<b>412</b>	<b>388</b>
<b>Number of visits at the library</b>	<b>7,160,113</b>	<b>6,449,357</b>	<b>6,133,185</b>	<b>5,197,400</b>	<b>4,388,083</b>
<b>Virtual visits</b>	<b>1,396,804</b>	<b>6,803,235</b>	<b>12,460,193</b>	<b>15,915,048</b>	<b>15,590,416</b>
<b>Hours open</b>	<b>96,911</b>	<b>94,304</b>	<b>103,912</b>	<b>85,671</b>	<b>108,345</b>
<b>Total, loans</b>	<b>9,150,598</b>	<b>9,179,672</b>	<b>8,827,319</b>	<b>7,281,878</b>	<b>7,849,150</b>
per 1,000 inhabitants	16.6	15.6	14.1	14	12.0
per 1,000 borrowers	37.7	43.4	37.6	37.5	36.7
Number of times the E-material was used	–	–	412,702	1,325,620	1,487,128
Libraries in hospitals etc.	129,405	57,540	42,028	10,479	12,860
Home service	52,817	35,764	32,250	27,892	31,325
Mobile libraries	237,233	239,871	192,092	113,836	136,187
Distance loans <sup>2</sup>	1,655	1,127	1,075	935	1,138
<b>Percentages of loans</b>					
Books (incl. music)	73.9	70.4	77.3	84.5	88.3
Music sheets and scores	1.3	1.4	1.3	1.2	1.2
Sound recordings	14.7	15.0	9.7	4.6	3.6
Image recordings	6.7	10.4	8.2	5.4	3.6
Others	4.7	4.2	4.9	4.1	4.4
Non-fiction books	39.3	37.3	37.5	28.8	29.9
Fiction books	60.7	62.7	62.5	55.8	57.2
Books for adults	71.5	69.6	65.6	60.0	58.8
Books for children	–	30.4	34.4	40.0	41.2
Books in Finnish	–	86.3	85.7	85.7	85.3
Books in Swedish	–	3.8	4.3	4.6	4.8
Books in other languages	–	9.9	9.9	9.7	9.9
Public computers	–	385	373	241	286
Public computer sessions	–	1,085,106	722,846	330,643	248,482
Web information services sessions	1,500	15,149	8,952	11,590	5,672
Events and activities	1,639	2,470	6,008	2,469	2,843
Guiding sessions	671	866	1 248	737	899

<sup>1</sup> From 2003 on, the statistics on the loans of the home service distinguish its own loans from the total number of loans.

<sup>2</sup> Distance loans received.

Source: Culture and Leisure Division.

## 8.3

## Sports and recreation 2000–2021

	2000	2010	2015	2020	2021
<b>City-coordinated sports activities</b>					
Customers	49,386	103,004	149,169	84,425	38,720
Sports associations and clubs having received allocations	397	398	371	319	313
<b>Outdoor sports facilities<sup>1</sup></b>					
Total number	466	462	552	611	595
of which					
football pitches, tennis courts etc.	286	298	260	254	258
outdoor swimming stadiums	2	2	2	2	2
visitors	313,773	396,592	391,739	245,887	316,556
Beaches for swimming	25	25	24	26	26
<b>Indoor sports facilities<sup>1</sup></b>					
Total number	72	69	80	79	82
of which public swimming pools <sup>2</sup>	4	4	4	4	4
visitors at public swimming pools	715,055	<sup>3</sup> 704,456	<sup>3</sup> 743,264	<sup>3</sup> 447,657	<sup>3</sup> 326,502
<b>Recreational areas and parks</b>					
Area, ha	4,641	<sup>4</sup> 3,850	3,834	3,834	3,834
recreational areas, ha	4,396	3,807	3,774	3,774	3,774
parks, ha	245	43	<sup>5</sup> 60	<sup>5</sup> 60	<sup>5</sup> 60
Mooring places for boats	9,342	12,063	11,923	11,878	11,900
Overnight stays at campsites	102,850	100,787	91,234	48,254	57,495

<sup>1</sup> The classification of sports and recreation facilities changed in 2012.

<sup>2</sup> Owned by the city.

<sup>3</sup> Incl. visits at the public swimming pools in Itäkeskus, Jakomäki, Pirkkola and Yrjönkatu. The Jakomäki public swimming pool was closed in 2010.

<sup>4</sup> The decrease is due to the fact that some waterfront recreational areas such as Utela, Ramsinniemi, Meri-Rastila and part of Kallahdenniemi are no longer managed by Helsinki City Sports Department, nor is the Kauhala area in Kirkkonummi.

<sup>5</sup> In addition, Paloheinänhuippu, which has been entirely transferred under the control of the Sports Department.

Source: Helsinki City Sports Department.

# Energy and water supply

## List of diagrams and tables

9.1	Production and supply of electric energy 1990–2021 .....	56
9.2	Supply and sale of district heating 1990–2021.....	56
9.3	Water pumped, sold and consumed 2000–2021 .....	57



## 9.1

## Production and supply of electric energy 1990–2021

	1990	1995	2000	2010	2015	2020	2021
	<i>GWh</i>						
<b>Supply and production</b>							
Shares in hydroelectric power stations	270			459	868	845	869
Shares in nuclear-electric power stations	597	} 1,258	1,418	1,144	1,379	1,413	1,402
Other shares	229			381	34	87	118
Actual purchase	46	} 326	1,023	159	91	118	77
Purchase of substitute electricity	126						
Production of Helsinki City's own power stations	2,798	3,712	5,002	5,716	4,663	3,648	3,095
Hanasaari		1,835	1,721	803	919	534	605
Salmisaari		832	1,033	568	566	817	750
Myllypuro		73	–	–		–	–
Vuosaari		58	957	3,919	4,231	2,298	1,740
Kellosaari		–	1	–	–	–	
<b>Total supply</b>	<b>4,066</b>	<b>5,296</b>	<b>7,443</b>	<b>7,859</b>	<b>7,035</b>	<b>6,110</b>	<b>5,561</b>

Source: Helen Ltd.

## 9.2

## Supply and sale of district heating 1990–2021

	1990	2000	2005	2010	2015	2020	2021
<b>Total supply, GWh</b>	<b>5,633</b>	<b>6,537</b>	<b>7,103</b>	<b>7,850</b>	<b>6,436</b>	<b>6,397</b>	<b>7,489</b>
Hanasaari power stations	3,074	1,267	1,135	1,774	1,297	1,821	1,610
Salmisaari power stations	1,601	1,298	1,621	1,005	1,296	1,144	1,566
Vuosaari power stations		3,559	3,783	3,887	3,283	2,408	1,735
<b>Heating sales, GWh</b>	<b>5,444</b>	<b>6,106</b>	<b>6,569</b>	<b>7,363</b>	<b>6,024</b>	<b>6,056</b>	<b>7,088</b>
To the distribution area	5,425	5,886	6,519	7,346	5,985	6,042	7,078
Outside the distribution area	19	220	50	17	39	15	10
Number of clients	9,257	11,374	12,800	14,010	15,039	16,000	15,584

Source: Helen Ltd.

## 9.3

## Water pumped, sold and consumed 2000–2021

	2000	2005	2010	2015	2020	2021
<b>Total water pumped, 1,000 m<sup>3</sup></b>						
Helsinki, partly the Helsinki Metropolitan Area	80,600	81,890	–	–	–	–
Metropolitan Area	–	–	90,097	88,619	96,000	96,000
<b>Total sales, 1,000 m<sup>3</sup></b>						
Helsinki, partly the Helsinki Metropolitan Area	72,013	72,657	–	–		
Metropolitan Area	–	–	71,360	71,830	75,800	75,600
<b>Price of water on 31 Dec., euro/m<sup>3</sup></b>						
Helsinki	0.46	0.67	0.78	1.08	1.19	1.23
<b>Price of waste water on 31 Dec., euro/m<sup>3</sup></b>						
Helsinki	1.34	1.21	1.11	1.34	1.41	1.44

Source: Helsinki Region Environmental Services Authority and the cities concerned.



# City finances and personnel

## List of diagrams and tables

10.1	City of Helsinki consolidated balance sheet 31 Dec. 2005–2021.....	60
10.2	City of Helsinki tax revenue, the proportion of state grants in the operational economy, and the annual margin 2000–2021.....	61
10.3	City staff by divisions on 31 Dec. 2021.....	61

Million euros	31 Dec. 2005	31 Dec. 2010	31 Dec. 2015	31 Dec. 2020	31 Dec. 2021
<b>Assets</b>					
<b>Fixed assets</b>					
Intangible assets	111.3	370.6	305.7	249.4	244.1
Tangible assets	9,084.3	11,252.0	12,992.2	16,379.2	17,039.4
Securities and other long-term investments	765.5	1,247.3	1,167.8	1,286.6	1,361.7
<b>Assets managed</b>	<b>246.0</b>	<b>471.4</b>	<b>455.7</b>	<b>659.5</b>	<b>667.9</b>
<b>Current assets</b>					
Inventories	84.1	87.5	98.8	145.1	130.5
Receivables	263.7	404.4	440.0	608.5	745.5
Investments	642.8	623.9	496.4	772.8	624.2
Cash and bank receivables	143.7	347.8	1,001.6	855.8	954.2
<b>Total assets</b>	<b>11,341.4</b>	<b>14,805.0</b>	<b>16,958.2</b>	<b>20,956.9</b>	<b>21,767.5</b>
<b>Liabilities</b>					
<b>Capital</b>					
Fixed capital	2,977.9	2,974.4	2,972.4	20,956.9	21,767.5
Basic capital of associations and foundations		5.8	5.8	7.0	7.0
Share of increase in joint municipal authorities' original capital	8.0	–	–	–	–
Fund for annexation fee	0.7	–	–	–	–
Revaluation reserve	1,845.4	1,832.2	1,813.2	1,795.8	1,792.6
Other own funds	664.4	711.7	812.7	1,085.6	1,163.8
Other equity	729.0	734.2	734.1	734.1	734.1
Surplus/deficit from previous financial years	178.7	1,314.0	3,276.8	5,668.9	6,185.4
Surplus/deficit for financial year	136.8	418.2	282.4	568.9	369.3
<b>Minority interests</b>	<b>49,6</b>	<b>60,5</b>	<b>69,6</b>	<b>171,4</b>	<b>177,8</b>
<b>Provisions</b>	<b>792,7</b>	<b>938,5</b>	<b>179,6</b>	<b>94,6</b>	<b>83,9</b>
<b>Capital managed</b>	<b>607,7</b>	<b>779,6</b>	<b>567,2</b>	<b>683,3</b>	<b>680,4</b>
Loans and borrowings	2,446.9	3,825.0	4,541.5	5,383.8	5,719.8
Long-term	853.5	1,212.7	1,702.9	1,791.1	1,881.0
<b>Total liabilities</b>	<b>11,341.4</b>	<b>14,805.0</b>	<b>16,958.2</b>	<b>20,956.9</b>	<b>21,767.5</b>
Loans per inhabitant, euro	4,497	6,917	7,977	8,442	8,941

Source: Annual accounts of the City of Helsinki.

## 10.2

### City of Helsinki tax revenue, the proportion of state grants in the operational economy, and the annual margin 2000–2021

	Total tax revenue <sup>1</sup>	of which			Share of state grants in the operational economy	Annual margin
		Municipal tax	Real estate tax	Share of corporate tax revenue		
<i>Current monetary value in the relevant year, million euros</i>						
2000	2,163	1,347	102	713	-13	506.1
2001	2,279	1,498	109	672	-52	412.9
2002	1,991	1,601	112	277	-119	98.7
2003	1,984	1,643	114	267	8	338.1
2004	1,928	1,600	115	211	68	380.9
2005	1,983	1,646	120	216	133	329.3
2006	2,094	1,748	122	223	174	470.7
2007	2,262	1,861	138	262	181	544.7
2008	2,413	1,975	149	288	180	539.8
2009	2,404	2,028	156	219	161	315.3
2010	2,506	2,064	185	257	250	388.0
2011	2,740	2,218	187	335	260	574.3
2012	2,759	2,306	189	263	297	439.1
2013	2,906	2,442	195	269	276	472.7
2014	2,952	2,435	207	310	251	480.7
2015	3,068	2,481	214	373	273	265.1
2016	3,206	2,586	221	397	316	569.4
2017	3,381	2,595	257	529	220	837.9
2018	3,417	2,581	263	575	197	752.0
2019	3,494	2,633	274	587	233	741.0
2020	3,565	2,792	254	519	479	863.4
2021	3,829	2,821	281	727	330	757.1

<sup>1</sup> The total sum of tax revenue also includes other tax revenue, chiefly dog tax.

Source: Annual accounts of the City of Helsinki.

## 10.3

### City staff by divisions on 31 Dec. 2021

	Permanent staff	Temporary staff	Total
Central Administration	3,827	519	4,346
The Urban Environment Division	3,469	177	3,646
Education division	11,071	3,637	14,708
Culture and leisure division	1,585	322	1,907
Social services and health care division	11,081	3,567	14,648
<b>Total</b>	<b>31,033</b>	<b>8,222</b>	<b>39,255</b>

Source: Executive Office, Financial Management Helsinki.



# Labour force

## List of diagrams and tables

11.1	Labour force by industry and age 2020 .....	64
11.2	Percentage of employed people in various age groups by age and gender 2020 .....	65
11.3	Unemployment rate % by gender in 2000–2020 .....	66



	Total		Age				
		%	-24	25-39	40-49	50-59	60-
<b>Labour force total</b>	<b>351,606</b>		<b>29,132</b>	<b>148,221</b>	<b>75,351</b>	<b>69,881</b>	<b>29,021</b>
<b>Employed. total</b>	<b>301,908</b>	<b>100.0</b>	<b>24,625</b>	<b>129,192</b>	<b>64,915</b>	<b>58,876</b>	<b>24,300</b>
A Agriculture, forestry and fishing	384	0.1	42	118	70	101	53
B Mining and quarrying	89	0.0	3	36	21	22	7
C Manufacturing	16,574	5.5	641	6,869	4,062	3,730	1,272
D Electricity, gas, heat and air conditioning supply	1,583	0.5	47	714	351	318	153
E Water supply, sewerage, waste management and remediation activities	731	0.2	50	316	161	140	64
F Construction	13,830	4.6	884	5,953	2,989	3,007	997
G Wholesale and retail trade; repair of motor vehicles and motorcycles	31,032	10.3	4,779	13,033	5,921	5,477	1,822
H Transportation and storage	13,665	4.5	1,267	5,195	2,855	3,164	1,184
I Accommodation and food service activities	10,207	3.4	2,299	4,367	1,731	1,428	382
J Information and communication	28,446	9.4	971	14,338	7,548	4,230	1,359
K Financial and insurance activities	11,958	4.0	593	5,750	2,518	2,352	745
L Real estate activities	3,917	1.3	179	1,355	774	1,014	595
M Professional, scientific and technical activities	32,039	10.6	1,470	16,207	6,975	5,210	2,177
N Administrative and support service activities	24,220	8.0	4,451	10,014	3,960	4,110	1,685
O Public administration and defence; compulsory social security	19,209	6.4	518	6,809	4,541	4,885	2,456
P Education	24,181	8.0	1,475	9,778	5,747	4,941	2,240
Q Human health and social work activities	43,755	14.5	2,711	17,663	8,871	9,663	4,847
R Arts, entertainment and recreation	9,284	3.1	1,123	3,667	2,122	1,658	714
S Other service activities	10,320	3.4	609	4,074	2,315	2,288	1,034
T Activities of households as employers	842	0.3	152	356	129	123	82
U Activities of extraterritorial organisations and bodies	293	0.1	1	121	72	74	25
X Industry unknown	5,349	1.8	360	2,459	1,182	941	407
<b>Unemployed</b>	<b>49,698</b>		<b>4,507</b>	<b>19,029</b>	<b>10,436</b>	<b>11,005</b>	<b>4,721</b>
Unemployment rate, %	14.1		15.5	12.8	13.8	15.7	16.3

<sup>1</sup> Standard Industrial Classification 2008.

Source: Statistics Finland. Employment statistics.

## 11.2

## Percentage of employed people in various age groups by age and gender 2020

Age, year olds	Helsinki	Espoo	Vantaa	Kauniainen	Tampere	Turku	Oulu	Finland
<b>15–74</b>	<b>58.9</b>	<b>60.7</b>	<b>59.5</b>	<b>59.9</b>	<b>55.1</b>	<b>53.4</b>	<b>55.7</b>	<b>55.4</b>
15–24	35.1	30.2	37.3	22.8	35.5	38.3	31.3	32.0
25–34	71.5	71.9	70.5	73.0	68.3	66.8	67.6	71.2
35–44	75.3	78.5	75.9	82.7	74.7	71.7	78.7	78.5
45–54	75.6	81.9	78.8	85.9	75.6	73.5	80.1	79.3
55–64	65.6	70.4	66.9	74.1	63.5	61.4	63.5	64.0
65–74	6.4	6.5	5.3	7.6	5.0	5.1	4.8	5.0
<b>Men, year olds</b>								
<b>15–74</b>	<b>58.9</b>	<b>61.7</b>	<b>61.3</b>	<b>59.4</b>	<b>54.9</b>	<b>52.2</b>	<b>55.2</b>	<b>54.9</b>
15–24	30.3	27.3	35.3	19.1	31.4	32.8	28.1	29.5
25–34	71.9	74.5	74.2	75.1	68.2	65.6	67.1	71.8
35–44	75.7	80.6	77.6	84.4	74.6	70.5	78.9	78.6
45–54	73.7	81.5	78.3	86.2	73.7	69.8	78.7	77.5
55–64	62.5	69.3	65.5	71.7	60.1	57.3	60.0	60.9
65–74	7.0	7.1	6.4	9.3	5.5	5.5	5.2	5.2
<b>Women, year olds</b>								
<b>15–74</b>	<b>59.0</b>	<b>59.8</b>	<b>57.8</b>	<b>60.3</b>	<b>55.3</b>	<b>54.6</b>	<b>56.2</b>	<b>55.8</b>
15–24	39.2	33.5	39.3	27.0	39.3	43.1	34.5	34.7
25–34	71.2	69.2	66.5	71.0	68.4	68.2	68.3	70.5
35–44	74.9	76.3	74.0	80.8	74.9	72.9	78.5	78.3
45–54	77.6	82.4	79.3	85.6	77.6	77.2	81.6	81.2
55–64	68.4	71.5	68.4	76.4	66.7	65.0	66.8	67.1
65–74	6.0	6.0	4.4	6.1	4.6	4.8	4.4	4.9

Source: Statistics Finland. Employment statistics.

## 11.3

## Unemployment rate % by gender in 2000–2020

	Helsinki	Espoo	Vantaa	Kauniainen	Tampere	Turku	Oulu	Finland
<b>Total</b>								
2000	8.3	5.9	7.2	4.2	14.0	13.9	13.7	12.5
2005	9.1	6.1	7.9	4.2	12.5	11.4	13.2	11.1
2010	7.8	5.8	8.5	4.1	13.8	12.9	12.8	10.3
2014	11.6	9.7	11.4	6.9	17.4	16.8	17.2	13.8
2015	12.2	10.6	12.3	7.2	18.3	17.1	17.3	14.3
2016	11.9	10.1	11.7	7.2	17.7	16.3	16.6	13.5
2017	10.4	8.6	9.9	5.9	14.1	13.6	14.0	11.3
2018	9.1	7.7	8.5	6.0	11.1	11.9	11.8	9.8
2019	8.9	7.4	8.3	5.2	11.4	11.3	11.7	9.8
2020	14.1	11.5	14.4	8.8	14.7	15.9	14.0	13.3
<b>Men</b>								
2000	9.6	6.4	7.9	4.5	13.3	14.4	13.4	12.3
2005	10.8	6.9	8.7	5.0	12.5	12.2	13.8	11.4
2010	9.5	6.6	9.9	4.8	15.4	16.1	15.0	11.9
2014	13.3	10.6	12.5	7.9	19.9	19.7	19.9	15.8
2015	13.9	11.4	13.4	8.1	20.3	19.9	19.4	16.1
2016	13.4	10.8	12.4	7.7	19.6	18.4	18.3	14.9
2017	11.6	9.0	10.4	6.4	15.3	15.1	15.2	12.4
2018	10.3	8.1	9.0	6.5	12.3	13.4	13.2	10.9
2019	10.2	7.9	8.9	6.2	12.8	13.0	13.4	11.2
2020	15.7	12.0	14.7	9.8	16.6	19.3	16.1	15.2
<b>Women</b>								
2000	7.1	5.4	6.5	3.9	14.7	13.4	14.1	12.7
2005	7.5	5.4	7.0	3.5	12.5	10.7	12.5	10.8
2010	6.3	5.0	7.1	3.4	12.1	9.9	10.4	8.8
2014	10.0	8.8	10.3	6.1	15.0	14.0	14.5	11.7
2015	10.7	9.7	11.0	6.3	16.2	14.4	15.1	12.4
2016	10.6	9.4	11.0	6.7	15.9	14.3	14.9	12.1
2017	9.2	8.1	9.3	5.4	12.8	12.2	12.6	10.2
2018	7.9	7.3	8.0	5.5	9.9	10.4	10.4	8.6
2019	7.8	6.9	7.7	4.2	10.1	9.5	9.9	8.3
2020	12.6	11.0	14.0	7.9	12.8	12.6	11.8	11.4

Source: Statistics Finland. Employment Statistics.

# Economic activities

## List of diagrams and tables

<b>12.1</b>	<b>Jobs by industry in Helsinki 2019–2020</b> .....	<b>68</b>
<b>12.2</b>	<b>Jobs by industry in 2020</b> .....	<b>69</b>
<b>12.3</b>	<b>Number of enterprises, staff and turnover by industry in Helsinki 2020</b> .....	<b>70</b>

## 12.1

## Jobs by industry in Helsinki 2019–2020

Industry (SIC 2008)	2019	2020	
	<i>Number</i>	<i>Number</i>	<i>% of the whole country</i>
<b>All industries total</b>	<b>413,677</b>	<b>398,045</b>	<b>17.4</b>
A Agriculture, forestry and fishing	369	314	0.5
B Mining and quarrying	17	88	1.4
C Manufacturing	17,464	17,107	6.1
D Electricity, gas, steam and air conditioning supply	2,006	2,067	17.2
E Water supply; sewerage, waste management	1,116	1,154	10.0
F Construction	21,723	20,625	12.9
G Wholesale and retail trade; repair of motor vehicles and motorcycles	38,533	37,048	14.7
H Transportation and storage	18,893	16,589	14.4
I Accommodation and food service activities	18,823	12,454	17.5
J Information and communication	41,436	43,764	42.4
K Financial and insurance activities	20,764	21,114	47.6
L Real estate activities	5,977	6,038	26.6
M Professional, scientific and technical activities	43,548	42,616	30.3
N Administrative and support service activities	35,038	30,811	18.8
O Public administration and defence; compulsory social security	30,581	31,998	26.9
P Education	24,578	24,434	14.8
Q Human health and social work activities	57,713	56,958	13.7
R Arts, entertainment and recreation	12,755	10,922	27.3
S Other service activities	15,774	15,290	25.3
T Activities of households as employers	790	837	9.1
U Activities of extraterritorial organisations and bodies	389	467	94.0
X Industry unknown	5,390	5,350	16.2

Source: Statistics Finland. Employment statistics.

## 12.2

## Jobs by industry in 2020

	Jobs, total	Industry (SIC 2008)							Workplace self-sufficiency, %
		Manufacturing and construction	Trade, transport and accommodation	Information and media	Finance, real-estate, liberal professions and support services	Public administration, education, health and social welfare services	Arts and culture, recreation and other services	Other and unknown	
		C,F	G-I	J	K-N	O-Q	R-S	A-B, D-E, T, U, X	
<b>Helsinki Metropolitan Area</b>	<b>633,698</b>	<b>80,952</b>	<b>130,608</b>	<b>59,415</b>	<b>145,031</b>	<b>165,378</b>	<b>34,245</b>	<b>18,069</b>	<b>115.8</b>
Helsinki	398,045	37,732	66,091	43,764	100,579	113,390	26,212	10,277	131.8
Espoo	122,605	18,370	25,018	13,408	25,776	31,076	4,445	4,512	92.0
Vantaa	110,705	24,769	39,256	2,217	18,306	19,601	3,378	3,178	102.5
Kauniainen	2,343	81	243	26	370	1,311	210	102	54.5
<b>Rest of Helsinki Region</b>	<b>102,290</b>	<b>24,433</b>	<b>23,115</b>	<b>1,127</b>	<b>15,542</b>	<b>29,649</b>	<b>4,227</b>	<b>4,197</b>	<b>69.3</b>
Hyvinkää	19,248	4,927	4,289	160	2,802	5,896	697	477	96.4
Järvenpää	13,183	2,809	2,822	137	2,128	4,330	591	366	64.9
Kerava	11,455	2,709	2,604	193	1,959	2,942	624	424	70.2
Kirkkonummi	10,629	2,036	1,851	120	2,355	3,429	425	413	57.9
Nurmijärvi	6,134	1,271	1,615	55	684	1,881	196	432	66.2
Mäntsälä	11,801	3,176	2,677	101	1,608	3,178	478	583	59.0
Pornainen	1,015	154	186	9	145	346	50	125	42.6
Sipoo	6,869	1,299	2,168	85	1,011	1,708	271	327	66.9
Tuusula	14,082	4,174	3,357	156	1,884	3,419	521	571	79.6
Vihti	7,874	1,878	1,546	111	966	2,520	374	479	60.3
<b>Helsinki Region</b>	<b>735,988</b>	<b>105,385</b>	<b>153,723</b>	<b>60,542</b>	<b>160,573</b>	<b>195,027</b>	<b>38,472</b>	<b>22,266</b>	<b>105.9</b>
Tampere	124,149	20,362	21,390	10,865	24,409	38,727	5,369	3,027	119.8
Turku	98,911	13,706	18,342	4,356	19,388	35,882	4,559	2,678	122.5
Oulu	91,589	16,609	15,171	4,954	16,022	32,308	3,657	2,868	104.8
<b>Finland, total</b>	<b>2,284,673</b>	<b>438,624</b>	<b>437,360</b>	<b>103,146</b>	<b>371,470</b>	<b>700,012</b>	<b>100,553</b>	<b>133,508</b>	<b>100</b>

NOTE: The statistics comply with the district division of 1 Jan. 2022. Data from merged municipalities have been combined.

Source: Statistics Finland. "Kaupunki- ja seutuindikaattorit", i.e. urban and regional indicator database.

# 12.3

## Number of enterprises, staff and turnover by industry in Helsinki 2020

	Industry (SIC 2008)	Enter-prises	%	Staff	%	Turnover <sup>1</sup>	%
<b>Total</b>		<b>53,787</b>	<b>100</b>	<b>278,741</b>	<b>100</b>	<b>87,273,680</b>	<b>100</b>
C	Manufacturing	1,511	2.8	17,888	6.4	15,616,393	17.9
D	Electricity, gas, steam and air conditioning supply	132	0.2	2,020	0.7	3,174,313	3.6
E	Water supply; sewerage, waste management	71	0.1	937	0.3	364,330	0.4
F	Construction	3,106	5.8	22,605	8.1	6,996,861	8.0
G	Wholesale and retail trade	6,315	11.7	34,596	12.4	27,848,814	31.9
H	Transportation and storage	2,141	4.0	14,828	5.3	2,769,184	3.2
I	Accommodation and food service activities	2,997	5.6	13,828	5.0	1,259,571	1.4
J	Information and communication	4,077	7.6	38,947	14.0	10,646,990	12.2
K	Financial and insurance activities	3,864	7.2	20,625	7.4	..	..
L	Real estate activities	5,918	11.0	5,871	2.1	4,992,075	5.7
M	Professional, scientific and technical activities	10,115	18.8	35,184	12.6	6,231,268	7.1
N	Administrative and support service activities	2,608	4.8	47,358	17.0	3,795,751	4.3
P	Education	924	1.7	2,482	0.9	261,030	0.3
Q	Human health and social work activities	3,547	6.6	13,091	4.7	1,579,521	1.8
R	Arts, entertainment and recreation	2,264	4.2	4,089	1.5	1,351,591	1.5
S	Other service activities	3,049	5.7	4,092	1.5	326,087	0.4
A-B, T, U, X	Other or unknown	1,148	2.1	300	0.1	59,901	0.1

<sup>1</sup> Due to rounding off the figures in the turnover column may not add up exactly to the total turnover figure.

Source: Statistics Finland's Business Register.

# Income and consumption

## List of diagrams and tables

13.1	Income recipients and income by income bracket in Helsinki 2020 .....	72
13.2	Income recipients by age and gender 2014–2020 .....	73
13.3	Income subject to state taxation on average by gender and age of income recipient 2014–2020 .....	74
13.4	State taxable income of various kinds of households 2020 .....	74



## 13.1

## Income recipients and income by income bracket in Helsinki 2020

Income bracket	Income recipients			Income subject to state taxation, share %		
	Persons	%	Accumulation %	Total	Earned income %	Capital income %
-5,000	50,672	8.9	8.9	0.4	0.4	0.5
5,000-10,000	43,714	7.7	16.6	1.6	1.7	0.7
10,000-15,000	56,033	9.9	26.5	3.1	3.3	0.7
15,000-20,000	45,948	8.1	34.6	3.7	4.0	1.0
20,000-25,000	45,237	8.0	42.5	4.6	5.0	1.2
25,000-30,000	46,061	8.1	50.7	5.8	6.3	1.5
30,000-35,000	46,693	8.2	58.9	6.9	7.5	1.7
35,000-40,000	41,761	7.4	66.2	7.1	7.7	1.9
40,000-50,000	64,349	11.3	77.6	13.1	14.1	4.1
50,000-60,000	41,423	7.3	84.9	10.3	11.0	4.1
60,000-80,000	43,117	7.6	92.4	13.5	14.2	7.3
80,000-100,000	18,644	3.3	95.7	7.5	7.7	6.0
100,000-	24,233	4.3	100.0	22.4	17.2	69.4
<b>Total</b>	<b>567,885</b>	<b>100.0</b>		<b>100.0</b>	<b>100.0</b>	<b>100.0</b>
<b>Income, 1,000 euro</b>				<b>21,940,471</b>	<b>19,750,838</b>	<b>2,189,633</b>
<b>Share of income subject to state taxation</b>				100	90	10

Source: Finnish Tax Administration.

# 13.2

## Income recipients by age and gender 2014–2020

	Age, years								Total
	-18	18-24	25-34	35-44	45-54	55-64	65-74	75+	
<b>Total</b>									
2014	14,944	53,907	114,081	84,912	80,550	71,022	59,970	45,839	525,225
2015	14,720	52,984	117,571	88,840	81,194	71,931	62,000	46,434	535,674
2016	15,120	52,121	119,721	91,919	80,775	72,516	62,416	48,145	542,733
2017	15,606	51,044	121,971	95,581	80,052	73,282	64,402	48,448	550,386
2018	16,083	50,440	122,711	98,485	77,968	74,049	64,936	49,911	554,583
2019	17,117	49,444	124,178	101,557	77,700	75,201	65,618	51,436	562,251
2020	15,543	47,358	123,509	103,287	77,517	75,983	65,188	54,189	562,574
%	2.8	8.4	22.0	18.4	13.8	13.5	11.6	9.6	100.0
<b>Gender</b>									
	<b>Men</b>	<b>Women</b>	<b>Total</b>						
2014	244,628	280,597	525,225						
2015	250,145	285,529	535,674						
2016	254,225	288,508	542,733						
2017	258,848	291,538	550,386						
2018	261,405	293,178	554,583						
2019	265,827	296,424	562,251						
2020	265,394	297,180	562,574						
%	47.2	52.8	100.0						

Source: Finnish Tax Administration.

# 13.3

## Income subject to state taxation on average by gender and age of income recipient 2014–2020

2020 currency rate, euro/ year	Age, years								Total
	-18	18-24	25-34	35-44	45-54	55-64	65-74	75+	
<b>Total</b>									
2014	1,596	12,457	29,394	43,509	47,615	46,735	37,956	29,148	35,300
2015	1,562	12,321	29,978	44,289	48,501	47,338	39,264	29,917	36,033
2016	1,547	12,438	29,995	44,179	48,423	47,077	38,308	30,291	35,926
2017	1,542	12,691	30,950	45,348	49,277	48,121	38,784	31,588	36,848
2018	1,746	12,695	31,886	47,075	51,162	49,361	39,186	32,100	37,881
2019	1,588	12,882	32,226	46,261	51,826	49,885	39,569	33,393	38,161
2020	1,729	12,263	32,908	47,806	52,842	50,482	38,645	33,527	38,889

	Gender		Total	Share of women´s income of men´s income %
	Men	Women		
2014	40,721	30,574	35,300	75.1
2015	41,981	30,822	36,033	73.4
2016	41,703	30,835	35,926	73.9
2017	43,140	31,261	36,848	72.5
2018	44,500	31,980	37,881	71.9
2019	44,081	32,853	38,161	74.5
2020	45,471	33,010	38,889	72.6

Source: Finnish Tax Administration.

# 13.4

## State taxable income of various kinds of households 2020

	Household- dwelling units	Income subject to state taxation	
	Number	Average per household- dwelling unit, euro	Median per household- dwelling unit, euro
<b>Total</b>	<b>344,898</b>	<b>61,158</b>	<b>42,664</b>
1-member household	172,044	34,019	27,248
Married/unmarried couple without children. or at least 2 persons (not a family)	78,229	89,239	71,694
Married/Unmarried couple with children	51,118	113,405	92,488
Single-parent family	23,374	46,961	34,584
Others	20,133	67,782	52,704

Source: Statistics Finland.

# Justice and public safety

## List of diagrams and tables

14.1	Offences known to the police in Helsinki Police District 2000–2021.....	76
14.2	Fines and convictions at courts of first instance 2021.....	76
14.3	Helsinki City Rescue Department's operation 2015–2021 .....	77

## 14.1

Offences known to the police in Helsinki Police District  
2000–2021

	2000	2005	2010	2015	2020	2021
<b>Total</b>	<b>106,162</b>	<b>100,108</b>	<b>116,990</b>	<b>104,473</b>	<b>106,036</b>	<b>75,717</b>
<b>All offences, Helsinki</b>	<b>85,284</b>	<b>74,583</b>	<b>83,520</b>	<b>74,504</b>	<b>84,998</b>	<b>73,426</b>
% of all offences in Finland	18.8	17.3	19.4	18.0	16.8	15.2
Crime against property	64,700	49,874	56,245	47,023	48,382	39,530
Crime against life and health	5,047	5,450	6,783	6,294	6,025	6,067
Sexual offences	178	359	315	428	647	789
Offences against justice, authorities and public order	2,053	2,604	2,903	2,944	3,269	3,609
Certain traffic offences	4,745	6,896	5,695	4,479	6,508	5,093
Other crimes	8,561	9,400	11,579	13,336	20,167	11,845
Endangering traffic safety hit-and-run, traffic (motoring) offences	20,878	25,525	33,470	29,969	18,796	6,493
Share of similar offences in the whole country %	6.7	7.2	6.6	7.4	9.2	7.7

Source: Helsinki Police Authority and Statistics Finland. Justice. Yearbook of Justice Statistics.

## 14.2

## Fines and convictions at courts of first instance 2021

	Helsinki		Finland	
	Total	Helsinki residents	Total	Helsinki residents
<b>Total</b>	<b>19,179</b>	<b>10,520</b>	<b>167,465</b>	<b>16,490</b>
Summary penal fee <sup>1</sup>	132	89	1,870	122
Fine orders <sup>2</sup>	7,428	4,182	77,672	6,852
Fines	4,469	2,396	33,756	3,686
Verdicts of guilty <sup>3</sup>	7,150	3,853	54,167	5,830
imprisonment	1,083	515	5,778	729
community service	177	85	1,613	127
supervisory sentence (electronic tag curfew)	3	1	156	4
probation	1,735	903	13,004	1,308
earlier conviction sufficient (Finnish Penal Code 7:6-7§§)	89	42	720	83
fines	3,595	2,042	30,776	3,208
mistrials	54	34	357	48
other punishments	414	231	1,763	323

<sup>1</sup> Including also summary penal fees by courts of law.

<sup>2</sup> 1–31 Dec. 2021. A new Fines Act came into effect on 1 Dec. 2021

<sup>3</sup> Not including summary penal fees by courts of law.

Source: Statistics Finland.

## 14.3

## Helsinki City Rescue Department's operation 2015–2021

	2015	2018	2019	2020	2021
<b>Total staff</b>	<b>674</b>	<b>660</b>	<b>706</b>	<b>720</b>	<b>760</b>
of which rescue operation staff	496	496	533	550	517
Rescue operations	4,930	9,617	9,268	8,807	9,438
Emergency medical care alarms	54,596	61,857	63,550	56,608	63,888
Accident prevention	5,775	6,039	5,222	4,988	4,670
Fire inspections	1,253	969	842	614	1,015
Places in bomb shelter	867,878	903,222	914,313	926,743	911,719

Source: Helsinki City Rescue Department and RegionCD.



# Elections

## List of diagrams and tables

<b>15.1</b>	<b>Municipal elections in Helsinki 2000–2021</b> .....	<b>80</b>
<b>15.2</b>	<b>Parliamentary elections in Helsinki 2011–2019</b> .....	<b>80</b>
<b>15.3</b>	<b>Presidential elections in Helsinki 2000–2018</b> .....	<b>81</b>
<b>15.4</b>	<b>EU Parliament elections 2014 and 2019</b> .....	<b>81</b>



## 15.1

## Municipal elections in Helsinki 2004–2021

	2004	2008	2012	2012	2021
Persons entitled to vote	459,428	474,209	499,692	527,982	542,830
% of persons entitled to vote in Finland	11.2	11.3	11.6	12	12.2
Persons who voted in Helsinki	262,362	279,181	286,787	326,351	334,867
Voting turnout %	57.1	58.9	57.4	61.8	61.7
Voting turnout % in municipal elections in Finland <sup>1</sup>	58.6	61.2	58.3	58.9	55.1
Ballots rejected in Helsinki	1,457	1 387	1,420	1,126	972
Percentage	0.6	0.5	0.5	0.3	0,3
Percentage in the whole country <sup>2</sup>	0.6	0.6	0.5	0.6	0.5

<sup>1</sup> Of those entitled to vote.

<sup>2</sup> Of ballots submitted.

Source: Statistics Finland.

## 15.2

## Parliamentary elections in Helsinki 2011–2019

	2011 <sup>1</sup>	2011 <sup>2</sup>	2015 <sup>1</sup>	2015 <sup>2</sup>	2019 <sup>1</sup>	2019 <sup>2</sup>
Persons entitled to vote	454,861	44,720	472,893	48,982	488,502	52,381
% of persons entitled to vote in Finland	10.4	19.6	11.2	20.2	11.5	20.6
Men	207,028	16,514	216,144	18,303	223,656	19,716
Women	247,833	28,206	256,749	30,679	264,846	32,665
Persons who voted in Helsinki	343,523	6,446	355,359	6,888	379,511	9,253
Voting turnout % <sup>3</sup>	75.5	14.4	75.1	14.1	77.7	17.7
Voting turnout % in municipal elections in Finland <sup>3</sup>	70.5	10.6	70.1	10.1	72.1	12.6
Ballots rejected in Helsinki	2,084	..	2,372	..	3,204	..
Percentage <sup>4</sup>	0.6	..	0.7	..	0.7	..
Percentage in the whole country <sup>4</sup>	0.6	..	0.5	..	0.6	..

<sup>1</sup> Finnish citizens resident in Finland. For more details, see [www.vaalit.fi](http://www.vaalit.fi).

<sup>2</sup> Finnish citizens resident abroad. For more details, see [www.vaalit.fi](http://www.vaalit.fi).

<sup>3</sup> Of those entitled to vote.

<sup>4</sup> Of ballots submitted.

Source: Statistics Finland.

# 15.3

## Presidential elections in Helsinki 2000–2018

	2006		2012		2018
	<i>First round</i>	<i>Second round</i>	<i>First round</i>	<i>Second round</i>	<i>First round</i>
Persons entitled to vote	478,589	478,589	502,960	502,960	535,967
In Helsinki <sup>1</sup>	439,144	439,144	457,588	457,588	484,684
Abroad <sup>2</sup>	39,445	39,445	45,372	45,372	51,283
Persons who voted	349,649	356,786	358,412	350,718	358,681
In Helsinki <sup>1</sup>	335,229	350,856	350,317	342,487	349,687
Voting turnout % <sup>3</sup>	76.3	79.9	76.6	74.8	72.1
Abroad <sup>2</sup>	5,420	5,930	8,095	8,231	8,994
Voting turnout % <sup>3</sup>	13.7	15.0	17.8	18.1	17.5

<sup>1</sup> Persons in Helsinki's population register. For more details, see [www.vaalit.fi](http://www.vaalit.fi)

<sup>2</sup> Persons not resident but entitled to vote in Helsinki. For more details, see [www.vaalit.fi](http://www.vaalit.fi)

<sup>3</sup> Of those entitled to vote.

Source: Statistics Finland.

# 15.4

## EU Parliament elections 2014 and 2019

	2014		2019	
	<i>Helsinki</i>	<i>Finland</i>	<i>Helsinki</i>	<i>Finland</i>
Persons entitled to vote	516,194	4,440,297	540,402	4,504,481
Persons who voted	250,194	1,736,618	278,536	1,836,059
Voting turnout % <sup>1</sup>	48.5	39.1	51.5	40.8
Ballot papers rejected	1,255	10,435	836	6,014
Voting turnout % <sup>2</sup>	0.5	0.6	0.3	0.3

<sup>1</sup> Of those entitled to vote.

<sup>2</sup> Of ballots submitted.

Source: Statistics Finland.

# Helsinki

The Helsinki Statistical Yearbook compiles a wide range of statistics on various themes. It presents a comprehensive picture of Helsinki, its residents and development based on reliable statistical data. In addition to the statistics on Helsinki, the yearbook offers comparative data regarding the Helsinki Metropolitan Area, the Helsinki Region and Finland as a whole. The various themes and their development are described in a total of 247 statistical tables.