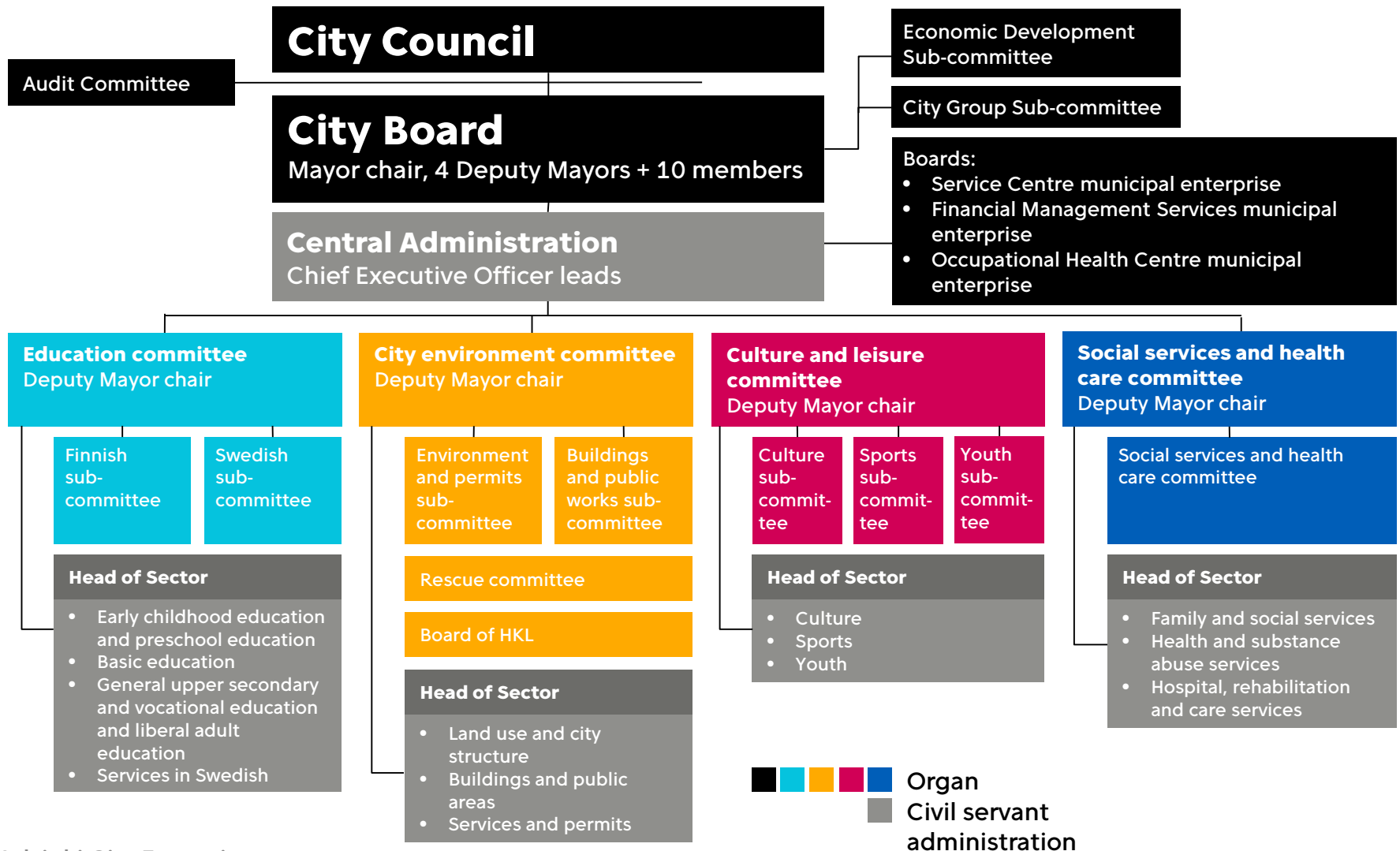
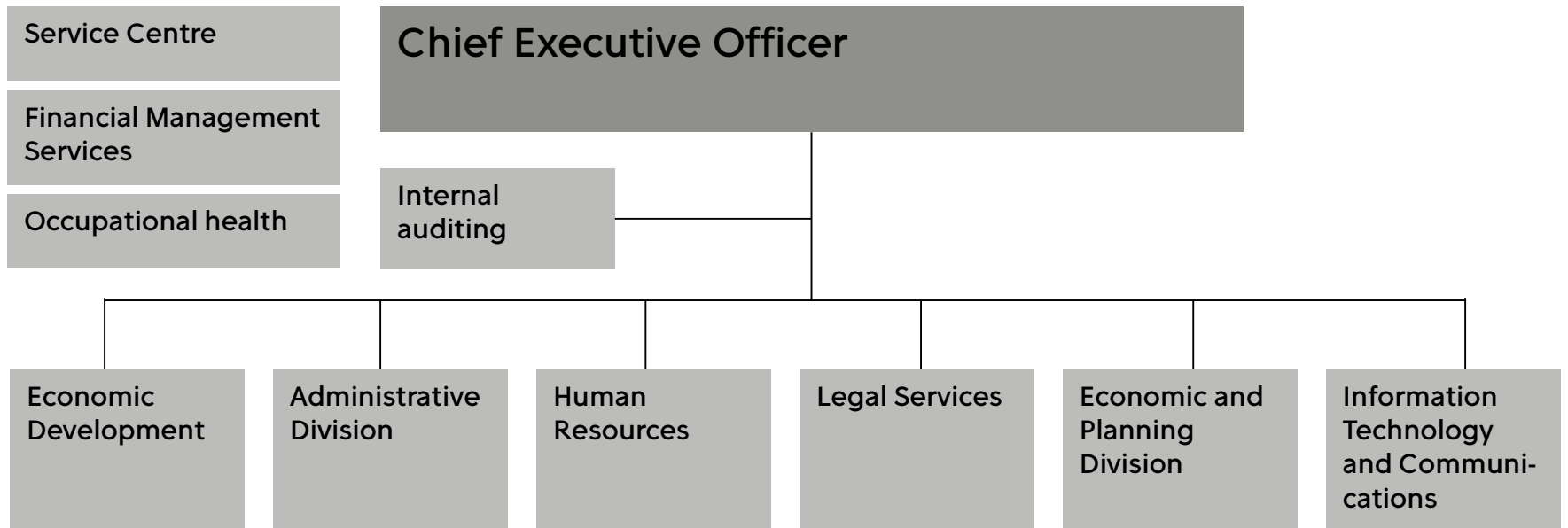


The City of Helsinki organisation

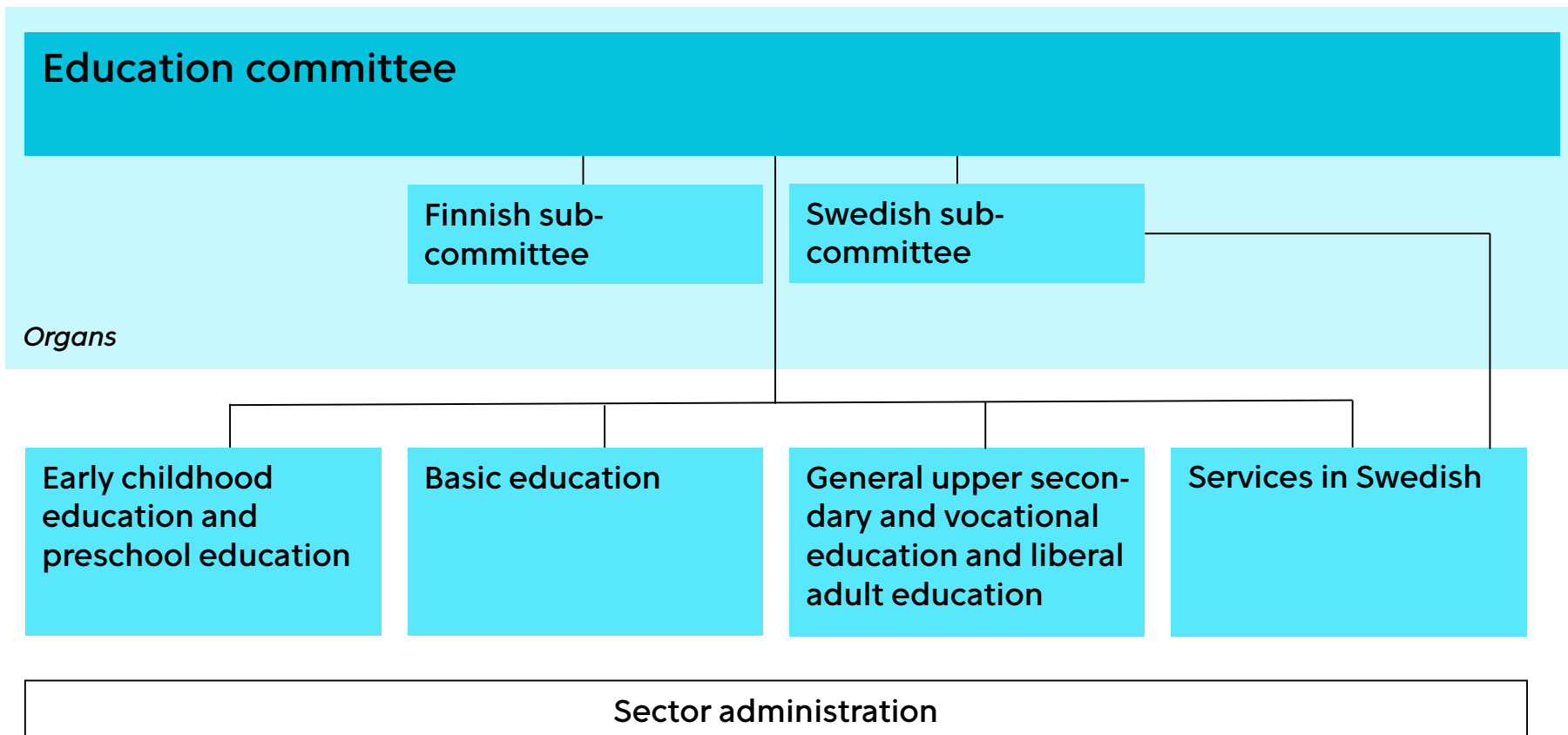
1 June 2017



Central Administration



Education sector



Education sector

Functional Groupings and Services

Decision by the City Board's Governance Division, 24 October 2016

Early childhood education and preschool education

- Early childhood education and preschool education (10 areas)
- Playground activities and after-school activities for pupils

Basic education

- Basic education regional services (4 areas)
- Basic education directed services
- Pupil welfare services in preschool and basic education

General upper secondary and vocational education and liberal adult education

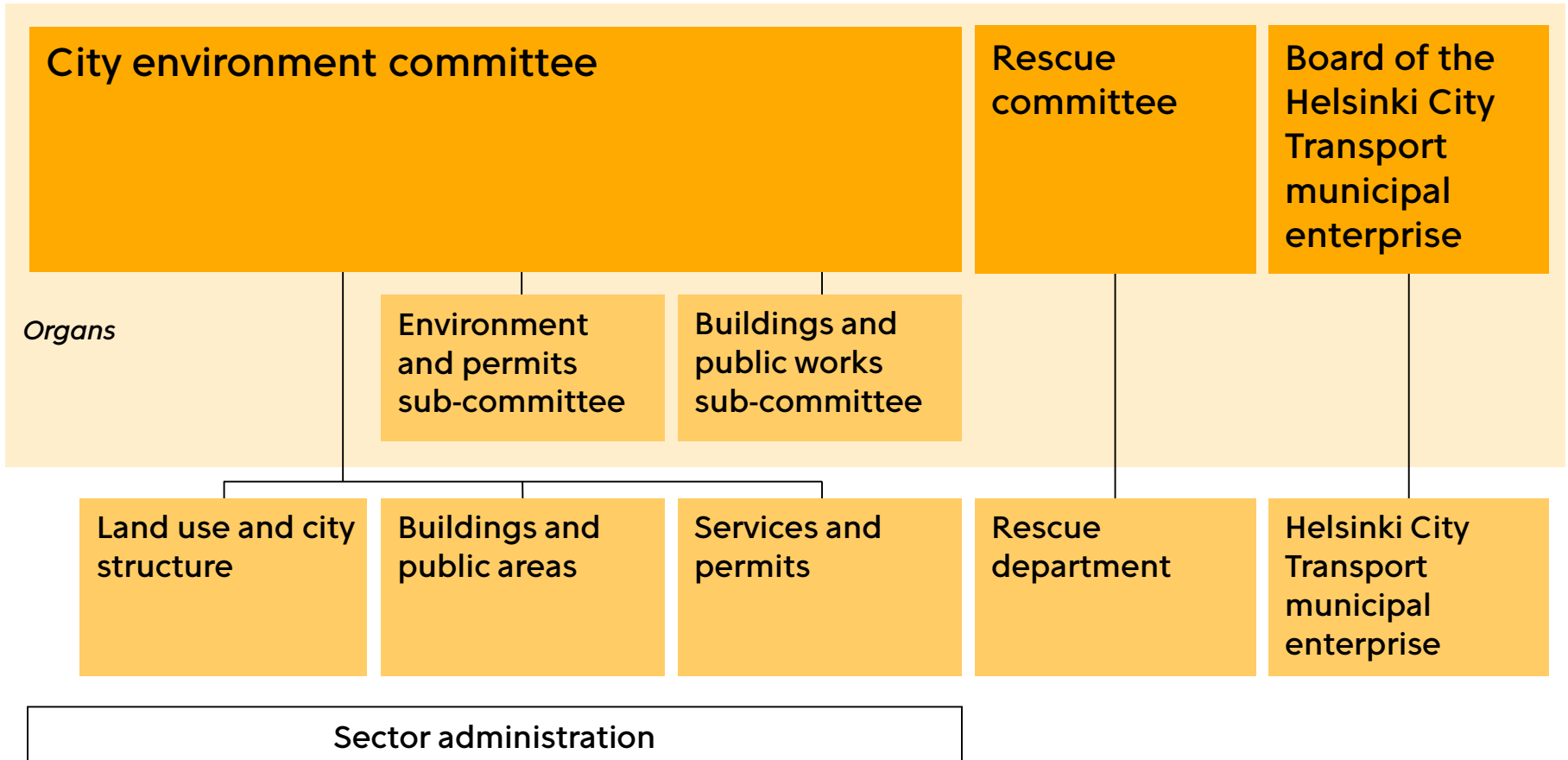
- General upper secondary education
- Vocational education and training
- Liberal adult education
- Upper secondary education student welfare services

Services in Swedish

- Early childhood education
- Basic education
- Liberal adult education and General upper secondary education

Sector administration

City environment sector



City environment sector

Functional Groupings and Services

Decision by the City Board's Governance Division, 14 November 2016

Land use and city structure

- Land use general planning
- Detailed planning
- Land property development and plots
- Traffic and street planning
- Urban space and landscape planning

Buildings and public areas

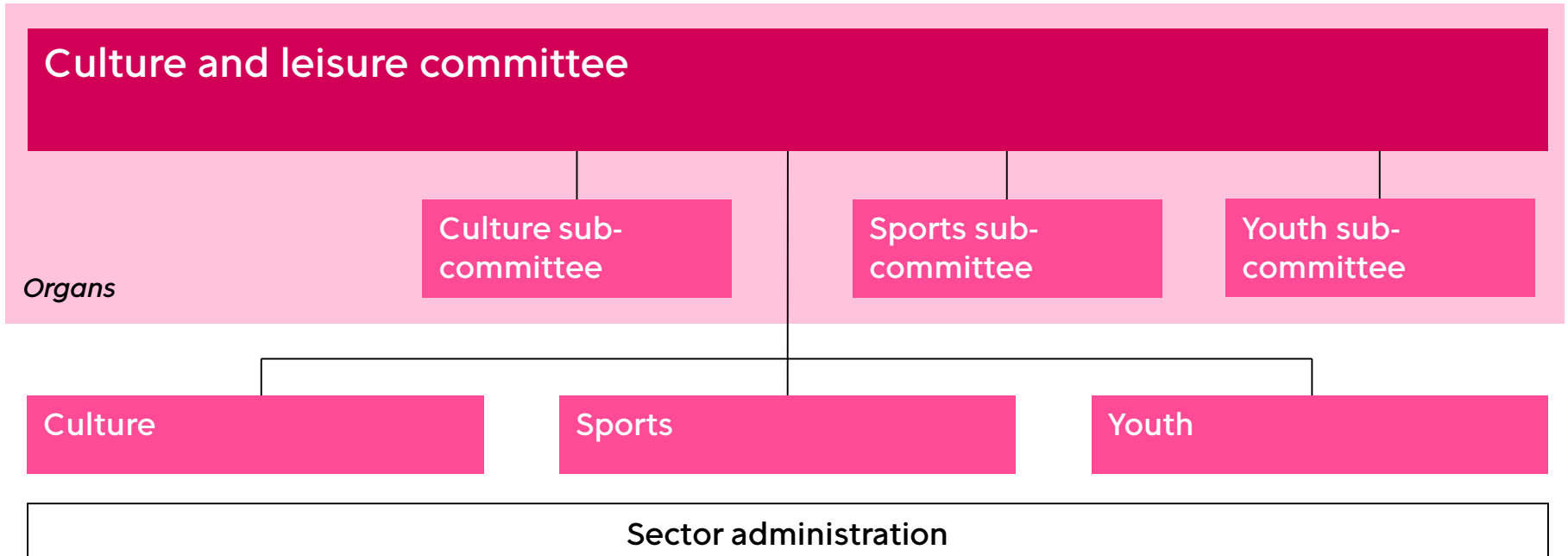
- Built assets management
- Premises services
- Maintenance
- Construction contracting
- Housing production

Services and permits

- Citizen and corporate services
- City survey services
- Building control services
- Environment services
- Parking control and parking services

Sector administration

Culture and leisure sector



Culture and leisure sector

Functional Groupings and Services

Decision by the City Board's Governance Division 7 November 2016

Culture

- City Library
- City Museum
- Helsinki Philharmonic Orchestra
- Helsinki Art Museum
- General culture services

Sports

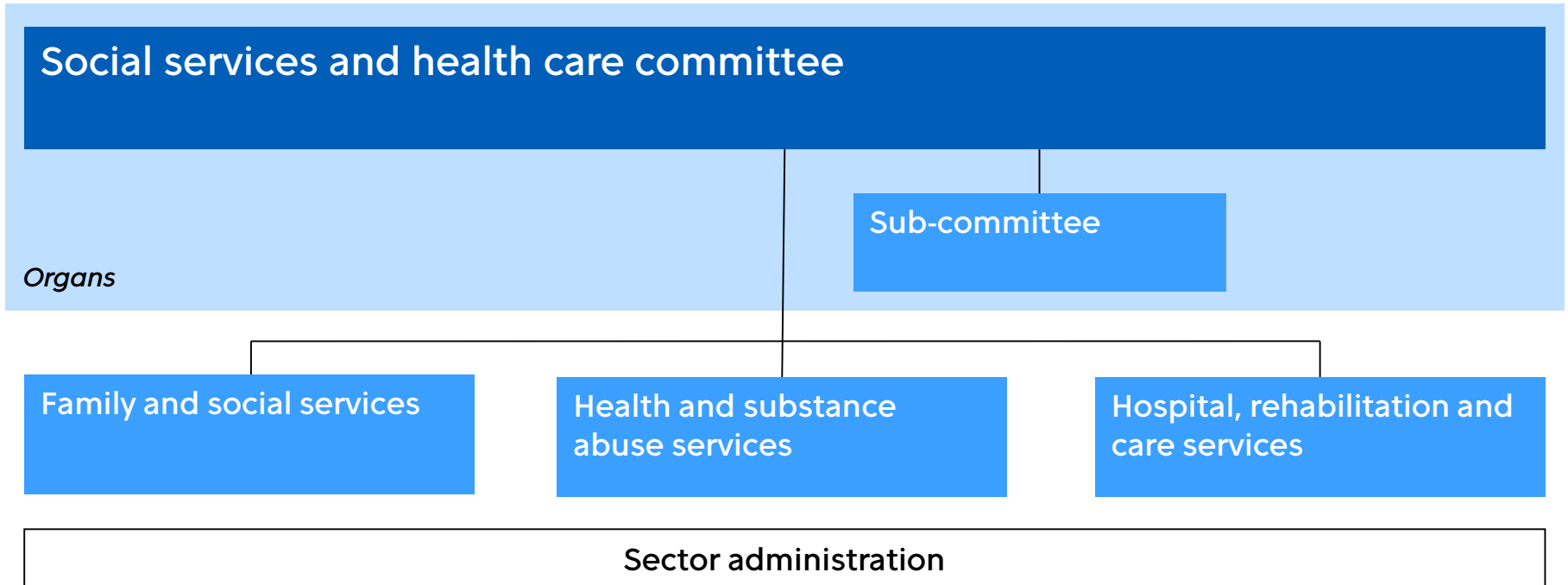
- Sports activation
- Sports facilities
- Recreation services

Youth

- Eastern youth work
- Western youth work
- Northern youth work

Sector administration

Social services and health care sector



Social services and health care sector

Functional Groupings and Services

Decision by the City Board's Governance Division 17 October 2016

Family and social services

- Wellbeing and health of families with children
- Child welfare
- Youth services and adult social work
- Work with the disabled

Health and substance abuse services

- Health station and internal medicine outpatient clinic
- Duty
- Psychiatry services and welfare for substance abusers
- Oral health care

Hospital, rehabilitation and care services

- Report, evaluation and placement
- Southern service area
- Eastern service area
- Western service area
- Northern service area
- City Hospital
- Rehabilitation competence centre

Sector administration