

HELSINKI REGION INFOSHARE



HELSINKI • ESPOO • VANTAA • KAUNIAINEN

Open City Data

for

researchers journalists associations data nerds humanists civil servants business
developers tourists traders neighbourhood activists historians futurists statisticians geniuses
artificial intelligence citizens software developers event organizers hands-on makers
traffic planners entrepreneurs coders curious people

for all of us

hri.fi

HELSINKI METROPOLITAN AREA – FORERUNNER OF OPEN DATA

Helsinki Region Infoshare is the most diverse open data service in Finland and one of the international leaders in the field.

Launched in 2011

Open data service of the cities of Helsinki, Espoo, Vantaa and Kauniainen. The service provides data regarding the cities of the Helsinki Metropolitan Area and Helsinki region as open data for anyone to use freely.

HRI helps data owners and supports data users.

OPEN DATA IN A NUTSHELL

Open data is:

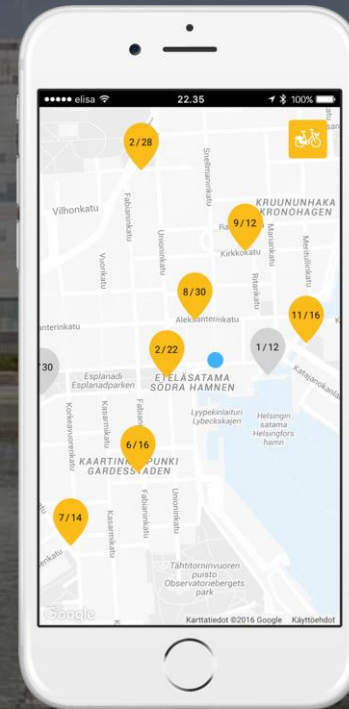
Public data
Openly licensed
Machine-readable
Free of charge



APPLICATIONS BASED ON OPEN DATA HELP IN EVERYDAY LIFE



The open event APIs of the cities can be used freely in e.g. event calendars, web services and mobile applications.



The city bike system in the Helsinki metropolitan area has been a huge success. Opening the bike station data for everyone quickly led to the creation of a host of city bike applications.

UNLIMITED PURPOSES OF USE

For example, [Helsinki's](#) and [Espoo's](#) 3D city models are available as open data for everyone to use.
We are only taking the first steps in making use of the world's finest city models.



Source:
City of Helsinki 3D experts

DATA FROM ALL AREAS OF LIFE



CONSTRUCTED ENVIRONMENT

102



CULTURE AND RECREATION

69



ECONOMY AND TAXATION

42



EDUCATION

39



ENVIRONMENT AND NATURE

68



HEALTH AND SOCIAL SERVICES

28



HOUSING

68



JOBS AND INDUSTRIES

67



LOCAL GOVERNMENT

42



MAPS

176



POPULATION

174



TRAFFIC AND TOURISM

79

CONSTRUCTED ENVIRONMENT

building prohibitions real estate housing production base map detailed plan 3D buildings flat types building stock floor space housing units 3D city models city plan heat loss surface model public area register stair halls address catalogue construction projects building land reserve building production rented housing production

Data

3D city models of [Helsinki](#) and [Espoo](#)

Buildings of [Helsinki](#), [Espoo](#) and [Vantaa](#)

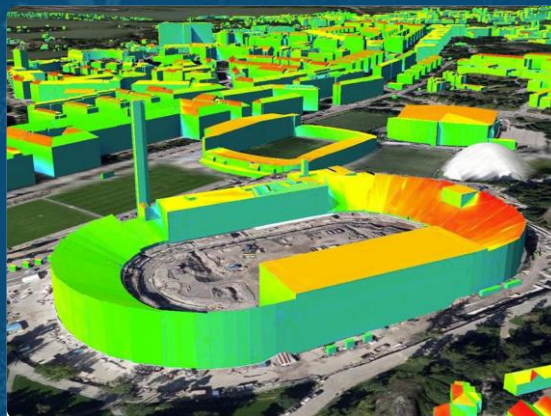
[Plot reserve in the Helsinki Metropolitan Area per block](#)

[Register of public areas in the City of Helsinki](#)

[Started and completed housing in the Helsinki region](#)

...and a lot more, check hri.fi

Applications



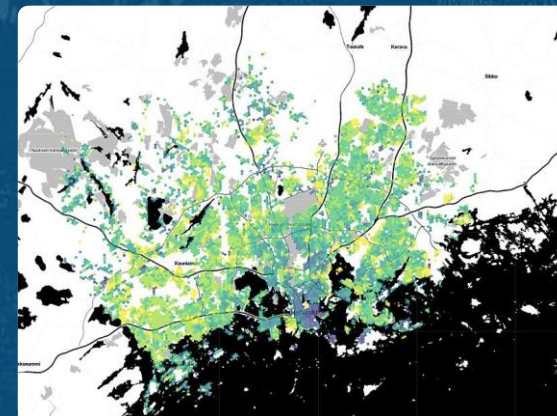
[Helsinki Energy and Climate Atlas](#) is a tool based on the 3D city data model. The Atlas offers information about the energy consumption and solar energy potential of buildings.

Data: [3D models of Helsinki](#)



The [SiirtoSoitto](#) mobile application tells the user about upcoming street cleanings and reminds the user of parking restrictions coming into effect. Author: TwentyHexagons.

Data: [Helsinki street cleaning plans](#)



[Age of buildings in the Helsinki Metropolitan Area](#) is Topi Tjukanov's visualisation. The map shows the average age of buildings in the Helsinki Metropolitan Area by 250 m x 250 m hexagons.

Data: Buildings of [Helsinki](#), [Espoo](#) and [Vantaa](#)



CULTURE AND RECREATION

libraries nature routes art museums exhibitions event API number of cyclists city museum art and culture grants
most borrowed books building history orchestras concerts non-fiction books collections reservations
swimming halls music magazines

Data

[Cities' open event APIs](#)

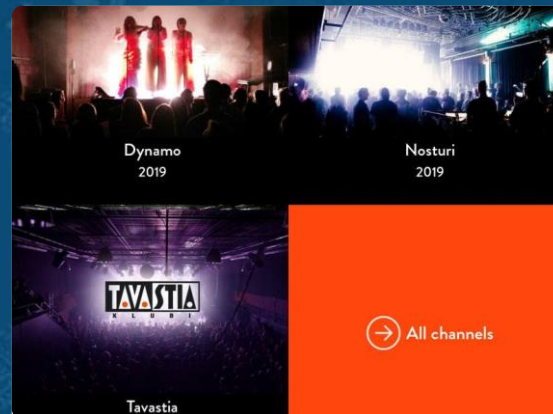
[Concerts of Helsinki Philharmonic Orchestra 1882-](#)

[Helmet libraries' catalogue](#)

[Helsinki Zoo visitor count](#)

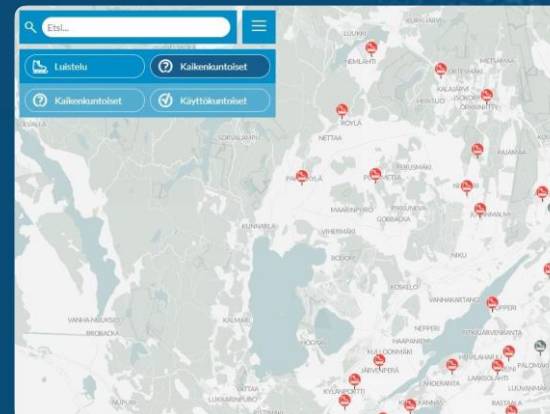
...and a lot more, check hri.fi

Applications



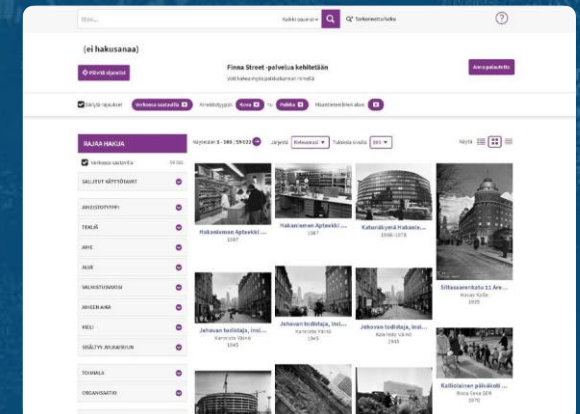
The [Eventmore](#) mobile application, created by iQ Payments Ltd, can be used to search events in the cities based on, for example, locations, time, category or theme.

Data: [Linked Events Helsinki API](#)



The [Outdoor Exercise Map](#) contains information about the condition of outdoor exercise facilities in Helsinki, Espoo and Vantaa. The service includes the skiing tracks, ice-skating fields and beaches in the cities.

Data: [Helsinki metropolitan area Service Map APIs](#), [HSL Journey Planner API](#)



[Finna Street](#) searches images from Finna based on the location provided by the user's browser. Finna contains more than a million photographs from Finnish museums, libraries and archives.

Data: [Collections of Helsinki City Museum](#)



ECONOMY AND TAXATION

difference in income city's acquisitions gini coefficient balance household incomes budgets investments income expenditure economic indicator operating expenses acquisitions of fixed assets profit and loss accounts municipally owned companies personnel costs tax revenue company tax income level

Data

[Budget data](#)

[Construction projects of Helsinki](#)

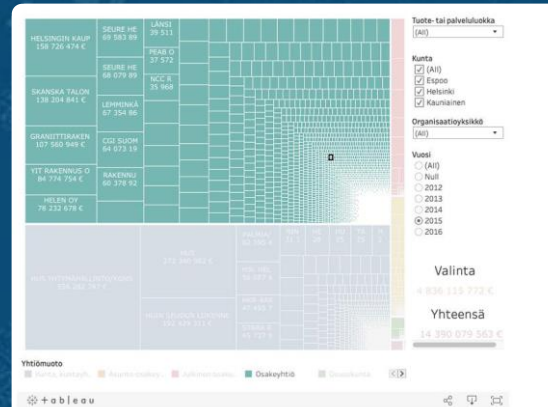
[Dwelling-unit incomes](#)

[Investments by the city of Vantaa](#)

[Procurements of Helsinki, Espoo, Vantaa and Kauniainen](#)

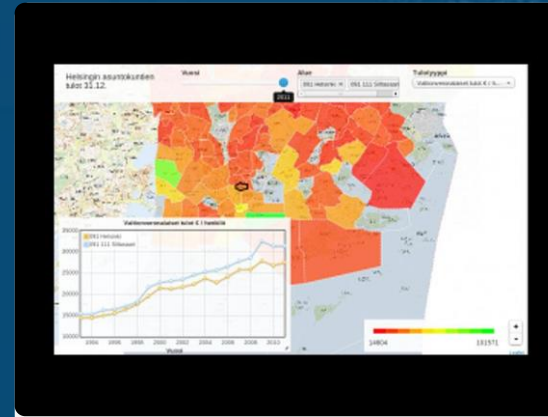
...and a lot more, check hri.fi

Applications



The [Procurements of municipalities](#) web service is Hahmota Oy's dashboard of the procurements of Helsinki, Espoo and Kauniainen.

Data: Procurements of [Kauniainen](#), [Espoo](#) and [Helsinki](#)



The [visualisation of income levels in Helsinki](#) shows the income level factors of housing areas in Helsinki both on the map and as time series.

Data: [Helsinki region statistics API](#), [Household income in Helsinki by district 1993-](#)



[Handata](#) is Sofokus Oy's search engine for the municipalities' acquisitions and tendered procurements.

Data: Procurements of [Helsinki](#), [Espoo](#), [Vantaa](#) and [Kauniainen](#)



EDUCATION

schools pre-school education number of pupils joint application system youth vocational education institutions
educational fields upper secondary schools students adult education centres entrance thresholds day-care
educational level universities

Data

[Application results for upper secondary schools](#)

[Comparison of early childhood education and care between the six largest cities](#)

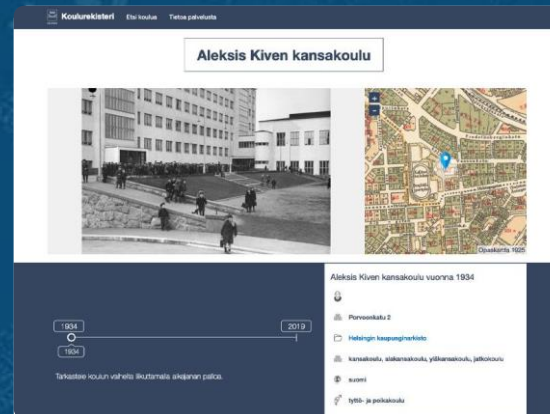
[Number of students in Helsinki by school](#)

[School admission areas](#)

[Statistical Yearbooks of Helsinki](#)

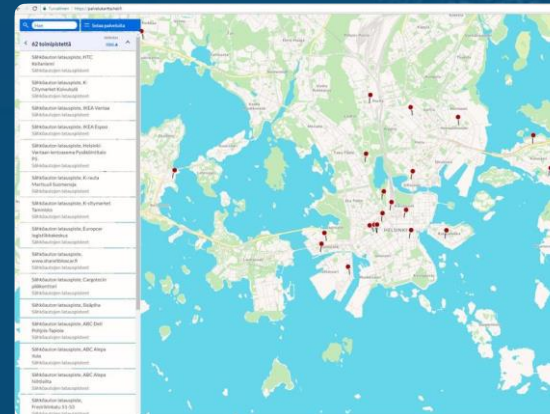
...and a lot more, check hri.fi

Applications



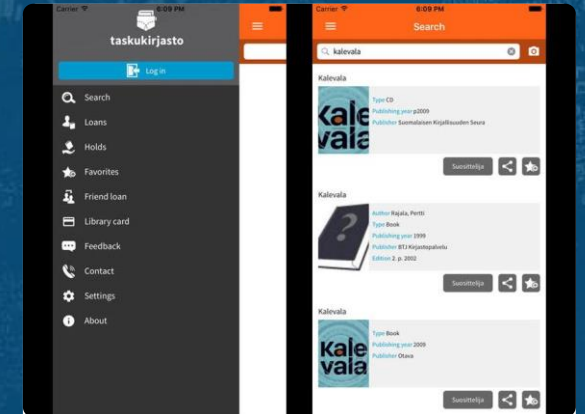
[The Helsinki school history register](#) includes information about the schools of Helsinki since the foundation of the city in 1550.

Data: [School history database of Helsinki](#)



On the [Helsinki Metropolitan Area Service Map](#) you can find all the public municipal services, such as schools, day-care centres and health stations in the Helsinki metropolitan area.

Data: [Helsinki metropolitan area Service Map APIs](#)



[HelMet Pocket library](#) is a mobile application for library customers in the Helsinki Metropolitan Region. In the Pocket library, the user can renew loans, search materials and receive reading recommendations.

Data: [Helmet-libraries' catalog](#)



ENVIRONMENT AND NATURE

valuable environments waste management nature trails environmental protection greenhouse gases solar radiant energy waste amount parks noise report nitric oxide nature data system air quality inland waters wind power questionnaire energy water management heat loss lighting air pollution environment report environment permit

Data

[Amount of solar radiant energy on the roofs in the Helsinki Metropolitan Area](#)

[Annual statistics for the waste management in the Helsinki Metropolitan Area](#)

[Answers to Helsinki's and Vantaa's environment attitude survey](#)

[Energy consumption in the Capital Region](#)

[Helsinki's nature information system](#)

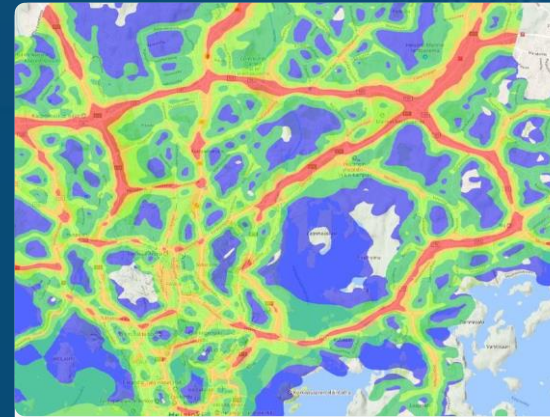
...and a lot more, check hri.fi

Applications



The [greenery areas of Helsinki](#) application estimates the greenery areas in terms of accessibility and location in relation to the population density. Authors: Petteri Pesonen, Pilvi Nummi, Aino Keitaanniemi.

Data: [Register of public areas in the City of Helsinki](#)



[Road traffic noise levels](#) is Cloud'N'Sci Ltd's visualisation, which shows the noise zones as comprehensible heat maps.

Data: [Traffic noise zones in Helsinki metropolitan area](#)



[Kattohukka](#) (~roof loss) is a service produced by Helsinki Region Environmental Services Authority (HSY) by which it is possible to scrutinise the heat loss through the roofs of buildings in Helsinki.

Data: [Thermographic map of Helsinki](#), [Orthophotograph of Helsinki region 2017](#), [Buildings in Helsinki](#)

HEALTH AND SOCIAL SERVICES

well-being health services health status housing conditions causes of death total fertility rate child welfare
social assistance social services elderly care number of customers performances prevalence index

Data

[Births and deaths in Helsinki 1811-1998](#)

[City of Vantaa's service accessibility survey 2018](#)

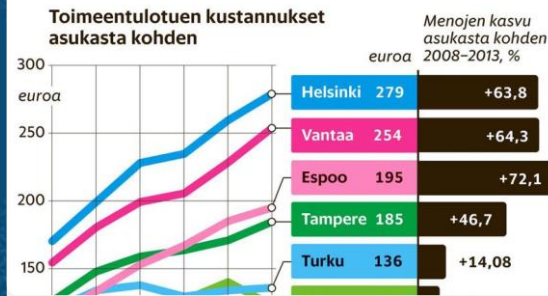
Comparisons of [elderly care](#), [social assistance](#) and [social welfare for the disabled](#) between the six largest cities in Finland

Helsinki: [Health care](#)

...and a lot more, check [hri.fi](#)

Applications

Toimeentulotuen menot kasvavat voimakkaasti



[Social assistance expenditure is increasing heavily](#) is an article by newspaper Helsingin Sanomat and the visualisation of the social assistance expenditure in the six largest cities in Finland.


Data: [Comparison of social assistance between the six largest cities](#)



[Comparison of elderly care between the six largest cities](#) report makes a comparison between the population, performance, personnel and costs of the cities.

Data: [Comparison of elderly care between the six largest cities](#)

Available on the App Store



Ilkka Pirttimaa's [BlindSquare](#) is an augmented reality application, which helps the visually impaired navigate in the city environment.

Data: [Helsinki metropolitan area Service Map APIs](#), [HSL Journey Planner API](#)



HOUSING

buildings housing prices number of rooms average size of dwellings purpose of use housing production
type of dwelling completed dwellings rental dwellings number of persons dwelling density

Data

[Dwelling households in Espoo](#)

[Dwelling inspection requests in Helsinki](#)

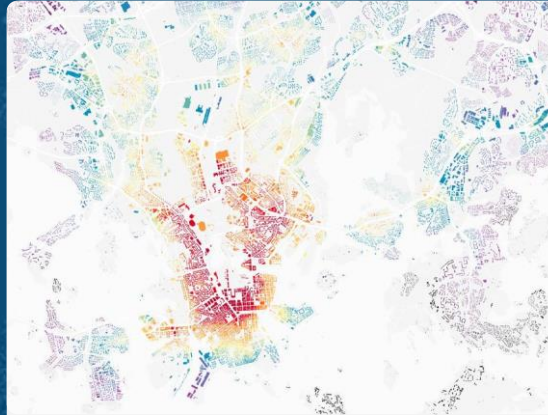
[Housing production in the Helsinki Metropolitan Area](#)

[Statistical yearbook of Helsinki: Housing](#)

[Statistical Yearbook of Vantaa](#)
[Vantaa's Future Survey](#)

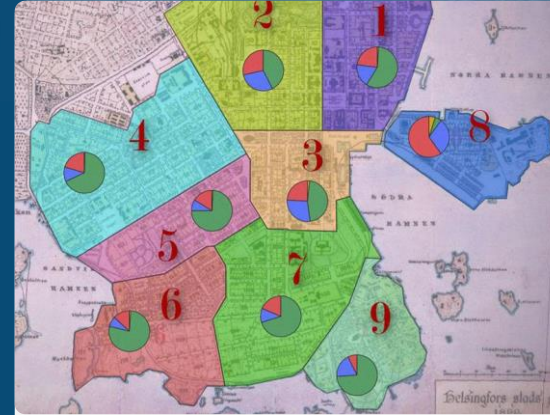
...and a lot more, check hri.fi

Applications



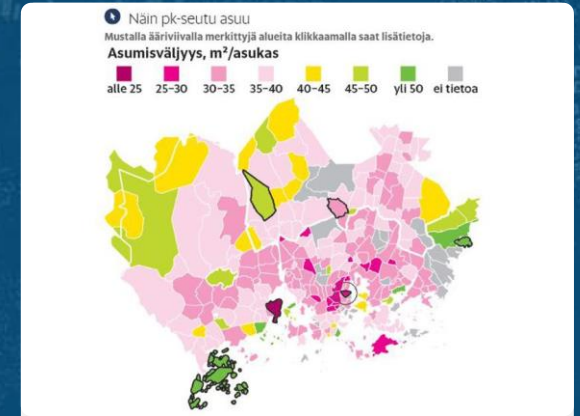
The [Helsinki's best places of residence](#) visualisation by Lauri Vanhala shows which parts of the city have the best public transport for the commute in the morning and the restaurant visits in the night.

Data: [HSL Journey Planner API](#), [Address list of Helsinki](#)



Salla Multimäki has made the [Water supply of dwellings 1900 visualisation](#). In 1900, an own tap was luxury even in the inner city.

Data: [Living conditions of workers in Helsinki in 1900](#)



[Newspaper Helsingin Sanomat's counter](#) tells if you are living in a tighter space than your neighbour.

Data: [Population grid of Helsinki metropolitan area](#)



JOBS AND INDUSTRIES

open jobs labour business activities work stoppages employment exchange city's personnel division classification unemployed unemployment rate

Data

[Employed work force in the Helsinki region by age and gender](#)

[Food establishments in Helsinki under food control supervision by the Food Safety Department](#)

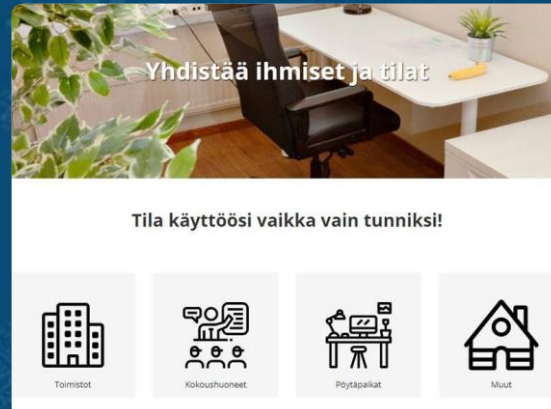
[Job API for City of Vantaa vacancies.](#)

[Resource reservation system for City of Espoo and Helsinki](#)

[Telephone survey data of Helsinki-based companies from 2016 and 2018](#)

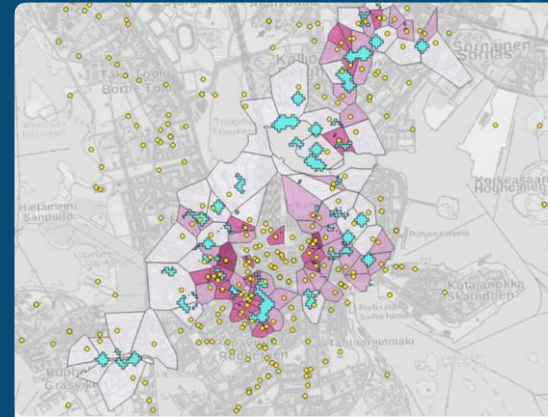
...and a lot more, check hri.fi

Applications



[Flextila](#) is a service constructed by Joustotoimisto Oy. The service makes it possible to utilise underutilised spaces. It can be used by both the owners of the spaces and those in need of a space.

Data: Resource reservation system for [Espoo](#) and [Helsinki](#)



[Where should I start a café?](#) is Faris Alsuhail's visualisation of how geographic data can be utilised in deciding the location for a company.

Data: [Walking and bicycling travel time matrix for Helsinki Metropolitan Area metro and train stations](#), [Food establishments in Helsinki under food control supervision by the Food Safety Department](#), [Nice city centre for visitors -survey results](#) & [City of Helsinki road map](#)

Rekisteröintien tila	
rekisteröity	tila
Verkkotietojen rekisteröinti	Rekisteröity
Ennen rekisteröintiä	Rekisteröity

[Firma.fi](#) is a new kind of company search, which combines the company's basic data from several open data sources.

Data: Procurements of the City of [Kauniainen](#), [Espoo](#), [Vantaa](#) and [Helsinki](#)



LOCAL GOVERNMENT

elections city's acquisitions environmental report city council budget revenue expenditure decisions
voting area divisions financial ratios investments data system registers resource reservation API

Data

[Electoral districts in the Helsinki metropolitan area](#)

[Information about Finland in many languages](#)

[Information systems registers of Helsinki](#) and [Vantaa](#)

[Metadata of HRI datasets](#)

[Open decision API of Helsinki](#)

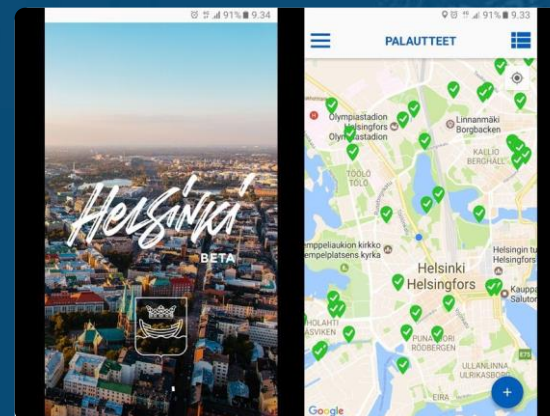
...and a lot more, check hri.fi

Applications



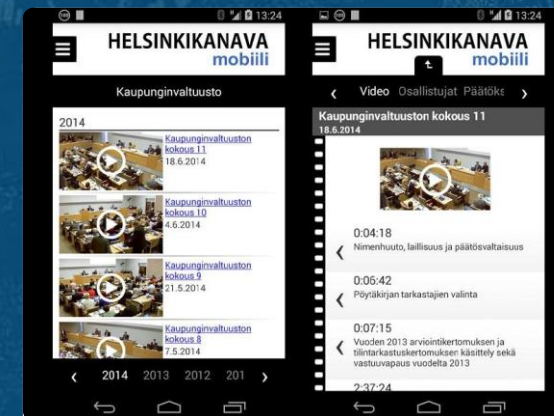
In the [Decisions web service](#), you can browse Helsinki's decisions according to topics, areas and descriptors.

Data: [Open decision API of Helsinki](#)



Using the [Helsinki application](#), you can send feedback and development ideas to the City.

Data: [The issue reporting API of Helsinki](#)



[Helsinki Channel mobile](#) is an open source code application through which you can, for example, watch all City Council meetings since 2011.

Data: [Helsinki Channel open data](#)



MAPS

orthophotos aerial photos nature routes traffic lanes nomenclature base map city plan building prohibitions property maps false-colour images laser scanning data up-to-date detailed plans 3D-models guide maps statistical zoning postal code areas geological destinations street cleaning plans Minecraft city model surface models area divisions neighbourhoods

Data

3D city models of [Helsinki](#) and [Espoo](#)

[Combined detailed plan map of Helsinki](#)

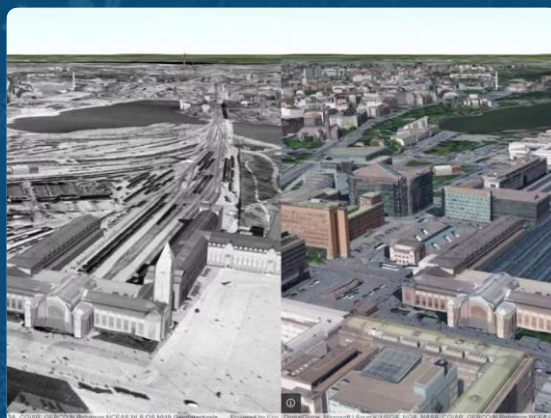
[Helsinki metropolitan areas in districts](#)

[Helsinki metropolitan postal code areas](#)

[Historical orthophotographs](#)

...and a lot more, check hri.fi

Applications



[Helsinki 1943 3D](#) is a 3D picture of Helsinki in 1943, created by Antti Ahola. It combines a historic orthophoto and the modern-day 3D city model of Helsinki.

Data: [Orthophotograph of Helsinki 1943](#), [3D models of Helsinki](#)



Newspaper Helsingin Sanomat's web article [Pasila grows sky-high](#) visualises future Helsinki using the Unreal game engine and Helsinki's 3D city model.

Data: [3D models of Helsinki](#)



In the Espoo City [Home Street Portal](#) you can browse a map with information about buildings, land use planning and traffic in your own neighbourhood.

Data: [Helsinki metropolitan area Service Map APIs](#)



POPULATION

population estimates age gender nationality language foreigners population immigration fertility rate mortality marriages population data grid single person households household-dwelling units population changes mother tongue migration families with children birth rate labour force

Data

[Average size of households in the Helsinki region](#)

[Families in Espoo by family type 1.1.1999](#)

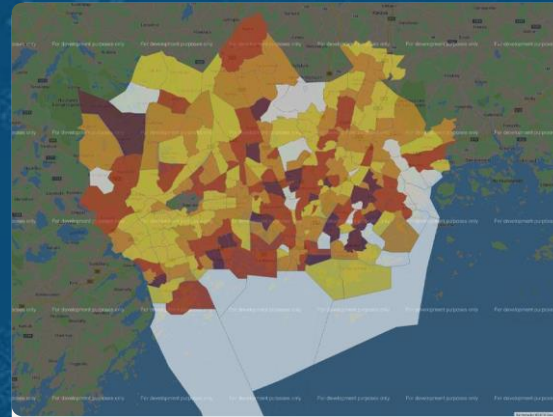
[Population and foreign people in Helsinki by place of birth, age and district in 2004-](#)

[Population grid of Helsinki metropolitan area](#)

[Population projections](#)

...and a lot more, check hri.fi

Applications



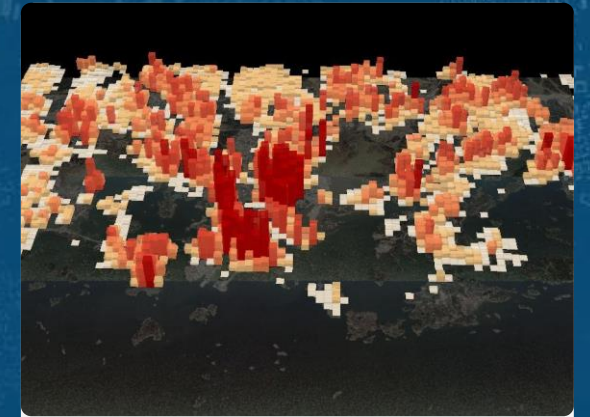
[The Helsinki Region is aging rapidly](#) is YLE News' article and visualisation of the age structure in the Metropolitan area.

Data: [Helsinki region statistics API](#)



[Migration to Helsinki by province and region 1917-2016](#) is a visualisation of Finland's centenary. The visualisation describes the enormous migration of the last century.

Data: [Migration in Helsinki by province 1911-1994](#)



[The 3D visualisation of the population data grid](#) is Faris Alsuhail's three dimensional visualisation of the distribution of the population of Helsinki into different housing areas.

Data: [Population grid of Helsinki metropolitan area](#)



TRAFFIC AND TOURISM

schedules parking city bikes streets traffic noise city models stops Helsinki Region Transport's services
 residential parking events traffic volumes cyclists park-and-ride guide map emissions cycling barometer
 parking violations accommodation stats traffic lights sights accidents

Data

[Centreline network of traffic routes in Vantaa](#)

[Helsinki and Tallinn nature trails](#)

[Number of cyclists in Helsinki, Espoo and Vantaa](#)

[Parking spot usage API of Helsinki](#)

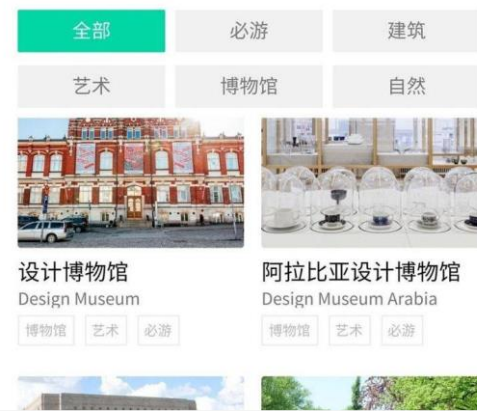
[Parking violations in Helsinki](#)

[Snow plow locations in Helsinki and Vantaa](#)

[Tourist traffic stops and parking places in Helsinki](#)

...and a lot more, check hri.fi

Applications



Tencent's [WeChat MyHelsinki Mini Program](#) makes Helsinki info available to almost one billion WeChat users. The application includes information about sights, services, events and mobility in the City.

Data: [Linked Events Helsinki API](#),
[MyHelsinki Open API](#)



[Helsinki Traffic Forecast](#) makes forecasts about the traffic volumes in the Helsinki region. It is based on open data published by the City of Helsinki and the National Land Survey of Finland. Author: Kristian Polso / Vaiste Productions Oy.

Data: [Traffic volumes in Helsinki](#)



Maas Global Ltd's [Whim](#) is a Mobility as a Service (MaaS) application, which can be used to gain access to public transport, city bikes, taxis and rental cars.

Data: [HSL Journey planner API](#)

HELSINKI REGION INFOSHARE





HELSINKI • ESPOO • VANTAA • KAUNIAINEN

Utilise freely!

hri.fi

 hri@hel.fi

 [@HRInfoshare](https://twitter.com/HRInfoshare)

 facebook.com/helsinkiregioninfoshare



Leaflet contents: **Tarinatakomo** and **HRI** | Layout: **Kuulitko Design** | Image: 3D model of Helsinki, Helsinki City Executive Office