

Indicator 9: Protected Nature Areas

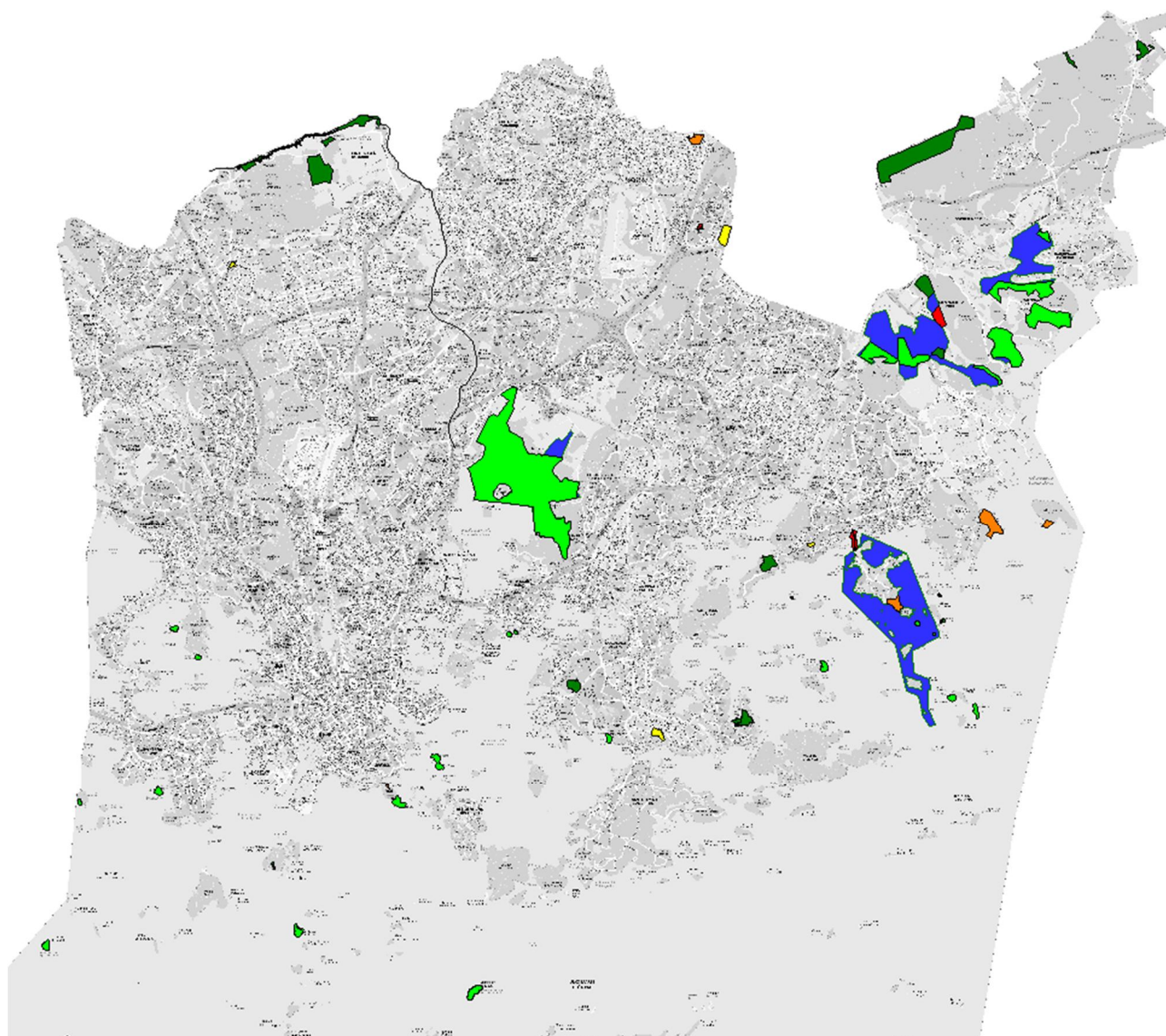


Figure: Nature Reserves of Helsinki. This figure shows the protected areas and Natura-areas. The colours are according to the category of protection: pale green = birds, dark green = forest, orange = meadow, yellow = mire, red = geological, blue = Natura area. One area is protected because of a threatened plant species. That site is marked with turquoise, but because the site is so small it cannot be distinguished at this scale. Natura areas and protected areas overlap to a certain extent. The southernmost islands are beyond the southern border of this figure. (Figure: Milja Heikkinen 2015, Map © The City Survey Division, Helsinki 2015)

Status of Indicator in Helsinki:

Helsinki's Nature Reserves, protected habitats and habitats of species under strict protection are protected under the Nature Conservation Decree. In addition, there are areas that belong to the Natura 2000 network in Helsinki. The conservation of Natura areas can be based on other instruments than the Nature Conservation Decree, depending on the circumstances. The following table shows the relative proportions of protected areas of the surface area of Helsinki.

	Helsinki surface area (km²)	Surface area of protected areas (km²)	%
The whole city	715.55	12.70	1.8
Just terrestrial areas	213.00	7.48	3.5
Just marine areas	502.55	5.22	1.0

In the following table, protected areas are categorized according to their conservation category. Both according to number and size, the majority are protected for the conservation of birds.

Conservation category:	Number of sites	Total surface area (ha):	Proportion of protected areas:
Birds	25	477.0	69.3%
Forest	12	158.79	23.1%
Meadow	7	27.57	4.0%
Mire	4	13.45	2.0%
Geological formation	3	11.33	1.6%
Threatened species	1	0.1	0.0%
Total:	52	688.24	100%

Score:

0 points: < 1.4%

1 point: 1.4% - 7.3%

2 points: 7.4% - 11.1%

3 points: 11.2% - 19.4%

4 points: > 19.4%

Monitoring:

The number of protected areas is monitored regularly. New conservation decisions are recorded into the Nature Information System, which is available to both officials and citizens. When calculating this indicator, up-to-date information will be obtained from the system.

Contact person (firstname.surname@hel.fi):

Sanna Elijoki, Environmental Inspector, Environmental Protection Department, Helsinki Environment Centre.