

Indicator 12: Canopy cover

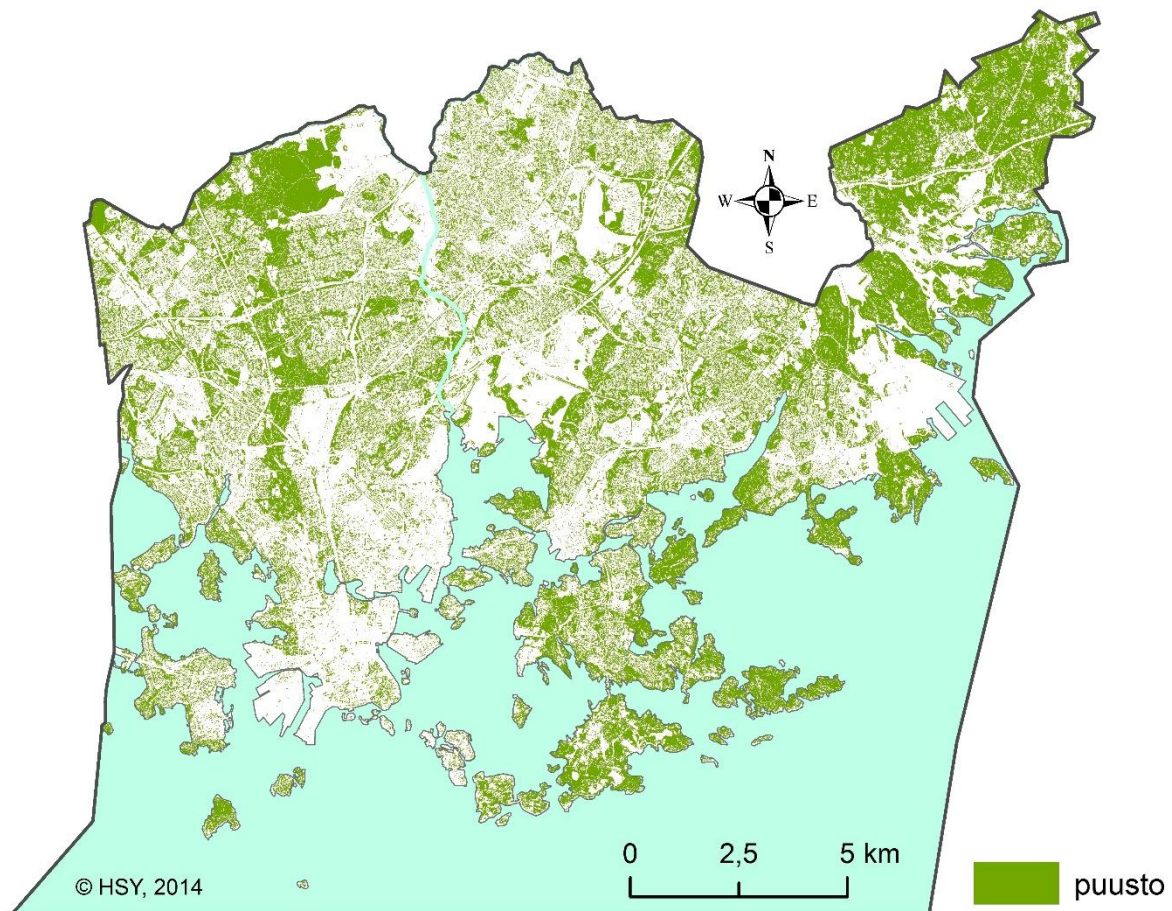


Figure: Canopy cover in Helsinki during 2013. Green=tree cover (Figure: Niina Salojärvi 2015)

Status of the Indicator in Helsinki:

The assessment of canopy cover was based on the regional land-cover data of the Helsinki Region Environmental Services HSY, which is based on infra-red channel containing orthophotographs from the year 2013. The material required for this assessment is collected every two years. A surface vegetation model based on laser section conducted in 2008 and 2010 was used to determine the tree data. Objects of greater than 2m in height are interpreted as trees. Differences in the densities of different trees in the canopy are not assessed, just the number of trees. The spatial resolution of the data is 0.6m, as a result of which the tree cover of the inner city area is well covered. According to this data, the average canopy cover in Helsinki is 39 %.¹

Score:

0 points: < 10.5%

1 point: 10.5% - 19.1%

2 points: 19.2% - 29.0%

3 points: 29.1% - 59.7% 2013

4 points: > 59.7%

¹ The data used for generating this indicator originate from a presentation given by a representative of the Helsinki Region Environmental Services HSY in an event held on 24.11.2014 and 16.1.2015. The presentation was given by Outi Kesäniemi and Mikko Pusa.

Monitoring:

The Helsinki Region Environmental Services HSY update the regional land-cover data at 2-4 year intervals. The class tree from the most recent canopy cover data will be used to update this index.

Contact person (firstname.surname@hel.fi):

Sanna Elijoki, Environmental Inspector, Environmental Protection Department, Helsinki Environment Centre.