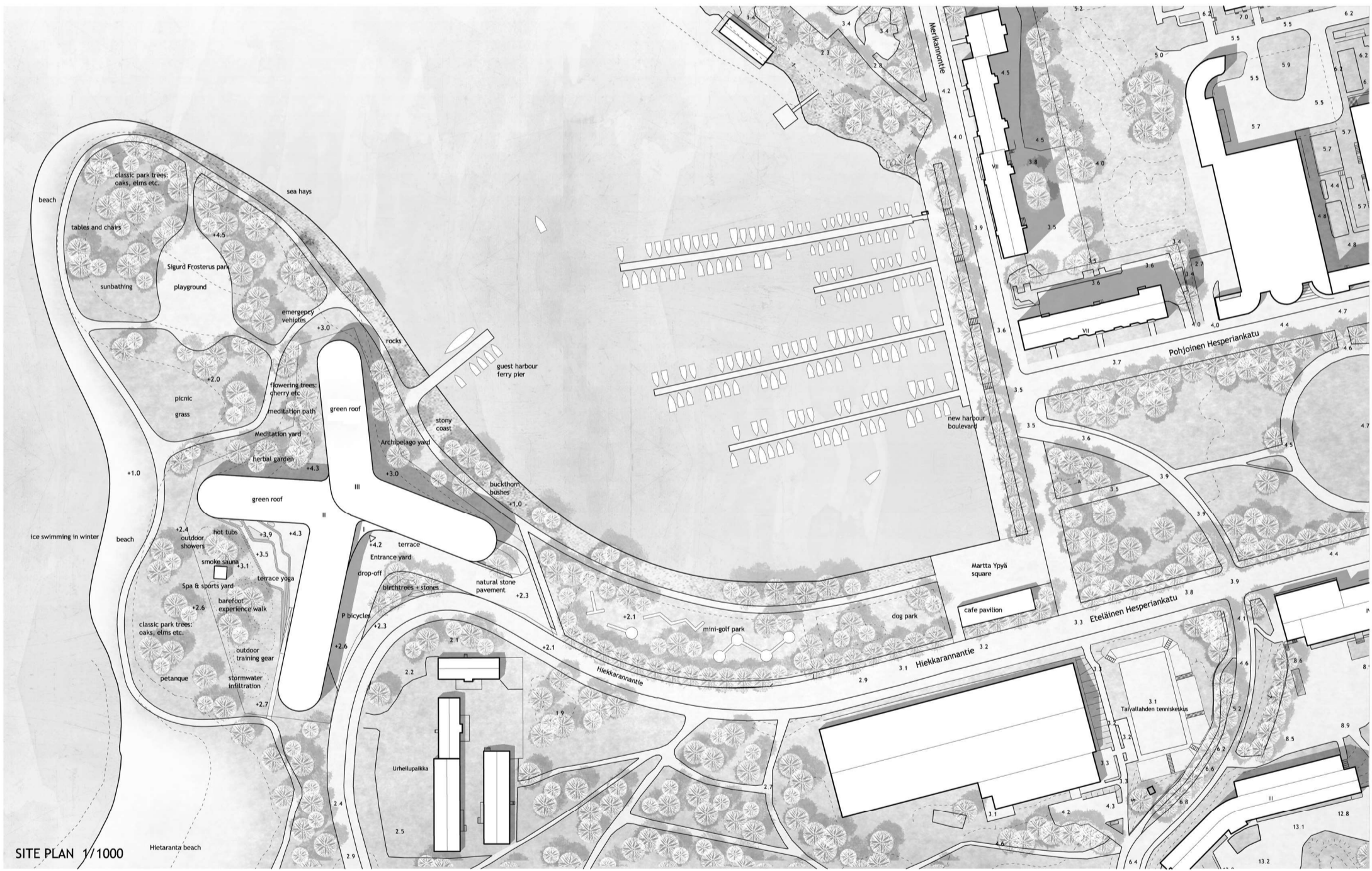




AERIAL VIEW



SITE PLAN 1/1000

Cityscape
 The star like volume of Soulmade local hub is placed freely in the park like setting to complement the nearby existing sports and bathing functions. The building is surrounded by high quality green areas and the coastal pedestrian route runs around the built area uninterrupted. The low mass doesn't block views as there is three level mass only to the North-East. The wings define four courtyards with different character that seamlessly blur to surrounding park. The entrance yard with natural materials and forest like landscape create image of sustainable Soulmade local hub. To the North-East, next to pier with guest harbor and ferry stop, there is an archipelago yard with rocks and vegetation typical for coastal areas like buckthorn and sea hays. To the North-West with calming sea views there is a quiet Meditation Yard with sensory barefoot walking path, herbal garden and flowering fruit trees. The South-Western Spa & Sports yard opens to the sun and is active with several functions like smoke sauna, outdoor bathing and training gear.

The drop off traffic is safe as it doesn't cross pedestrian walkway. Service traffic as well as access to underground parking are discreet as the ramp is cut shorter using the site height differences.

Architectural
 The rounded ends soften the long facades and refer to Töölö functionalist architecture heritage. The form becomes more sympathetic and interesting without creating too many exceptions in the modular hotel floors. The facades are extensively glazed and show the indoor functions to the surroundings. This tells that the local hub is open for everyone and makes the new Töölö living room easy to approach. The horizontality is emphasized by pairing the two adjacent windows together. The alternating rhythm of floors on top of each other gives dynamics for the modular and repetitive structure. The prefabricated façade elements with additional depth shade the interior spaces and protect them from overheating. Accoya planks are given fifty year guarantee and the material doesn't need any maintenance or surface treatment which makes the material also financially sustainable.

Functional
 When you enter, you have an interesting view through the building. The central check in space serves also Emma store and Twisted bar so that same staff can serve effectively several functions. In ground floor, there are no hard boundaries between the functions. The space flows freely and the layout is easy to modify for future needs as well. The big open spaces are located at the ends of the wings so that they benefit from the fantastic 180 degree sea views. The northern wing housing modular hotel rooms and needing less floor height is elevated from GF level. This is how the hotel rooms have privacy and in the basement level there is enough room for technical spaces and you get natural light to offices and personnel spaces. The spa is conceived with space in space concept. The closed functions are placed inside varying concrete and wooden boxes that form interesting spaces also between the volumes. You can choose your degree of privacy in the fluid and flowing space.

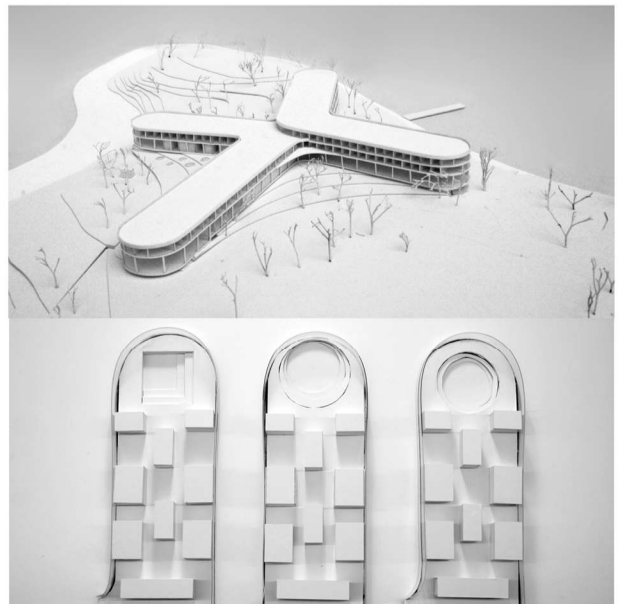
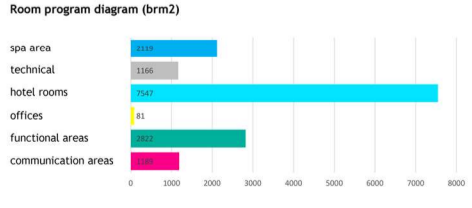
Materials, atmosphere
 The cellar as well as ground floor structures (except Northern wing with hotel rooms) are made of concrete which is safe for underground and wet spaces. Everything else is built with effective and easy to build wooden elements. The genuine materials like concrete and wood are left exposed without coatings which makes them long-lasting and easy to maintain. The robust surfaces create a calm but relaxed atmosphere encouraging people to interact.

Sustainability
 Hard surfaces are avoided in the exterior areas and the building has green roofs. The storm water is infiltrated on own plot. Plenty of bicycle parking spaces encourage to use bike instead of car. The narrow building mass lets natural light in to all spaces without risky roof light structures and enables natural ventilation opening the windows. The ground floor spaces are flexibly enabling future alterations. The depth of façade protects interior spaces from overheating when the sun shines from steep angle in the summer whereas dark concrete floor absorbs solar radiation in the winter. Wood that stores carbon in the building is used extensively but only where it is suitable. Wet spaces on ground level are made of concrete that tolerates moisture. The materials are healthy, long lasting and easy to maintain.

Calculations

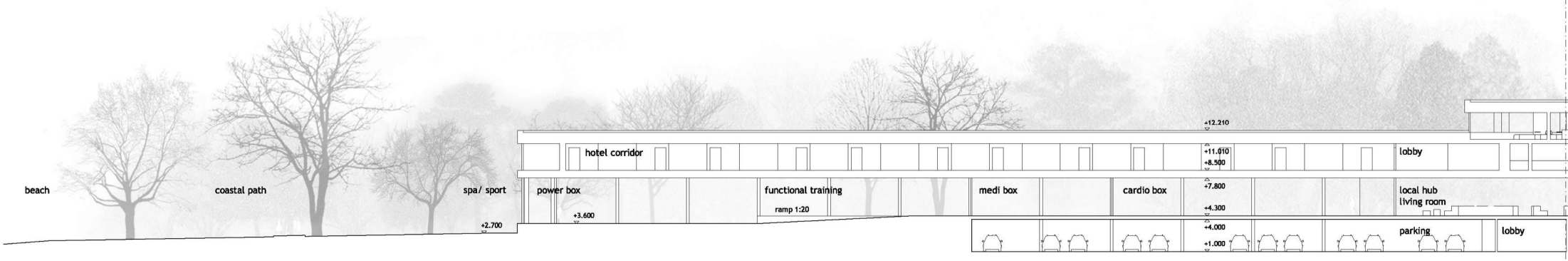
	BP area k-m2	Gr.fl area brm²	Gross volume m³
UG	414	3 605	12 978
GF	4 621	4 633	19 459
1st FL	4 516	4 610	13 277
2nd FL	2 138	2 187	7 676
total	11 689	15 035	53 390
Master plan	12 300		

Ratio of volume to surface 3,55
 Hotel room count: 165 business, 40 Superior





FLOOR PLAN BASEMENT 1/250



SECTION A-A 1/250

Hotel Rooms, groundfloor:

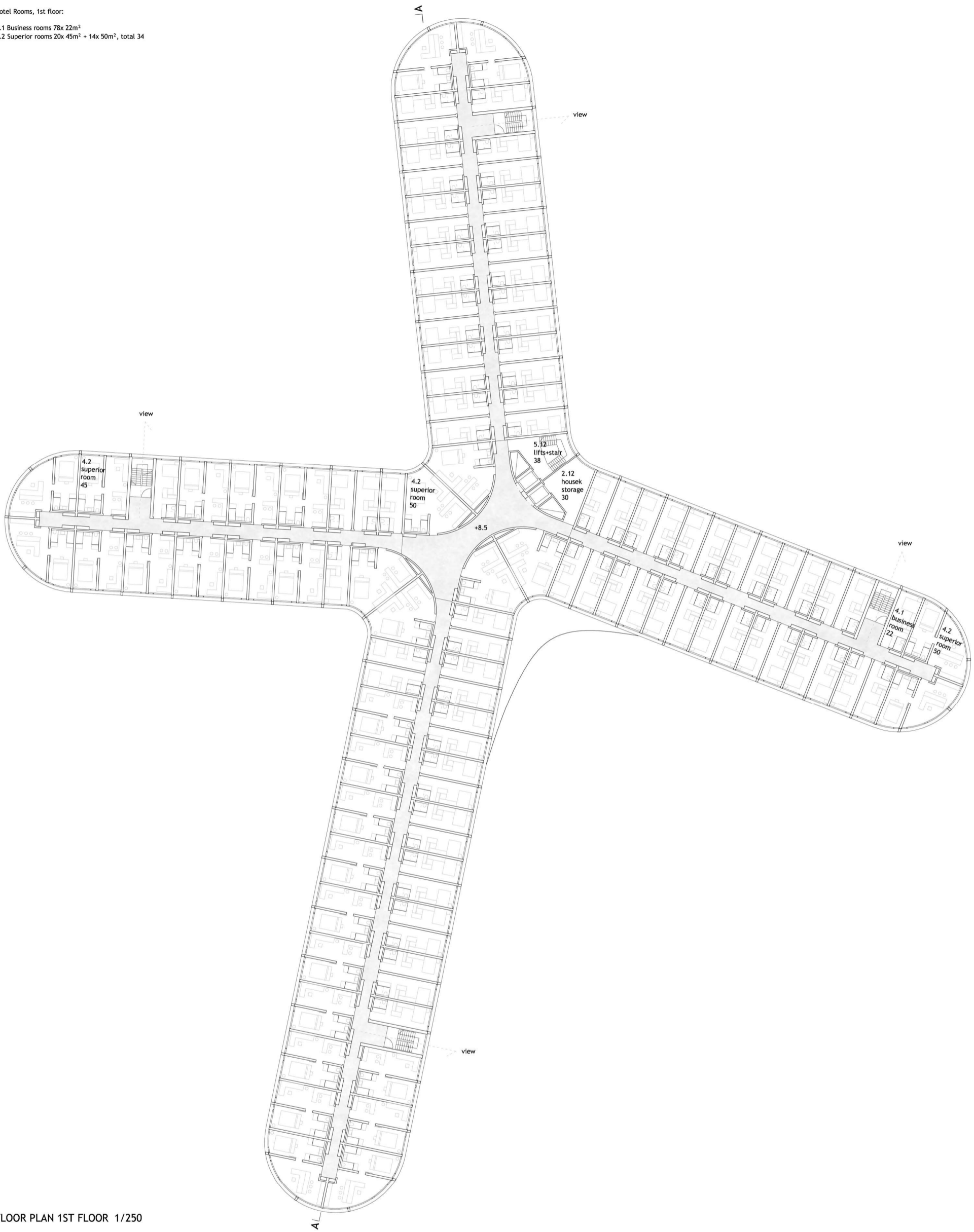
- 4.1 Business rooms 27x22m²
- 4.2 Superior rooms 2x50m²



FLOOR PLAN GROUND FLOOR 1/250



Hotel Rooms, 1st floor:
 4.1 Business rooms 78x 22m²
 4.2 Superior rooms 20x 45m² + 14x 50m², total 34



FLOOR PLAN 1ST FLOOR 1/250

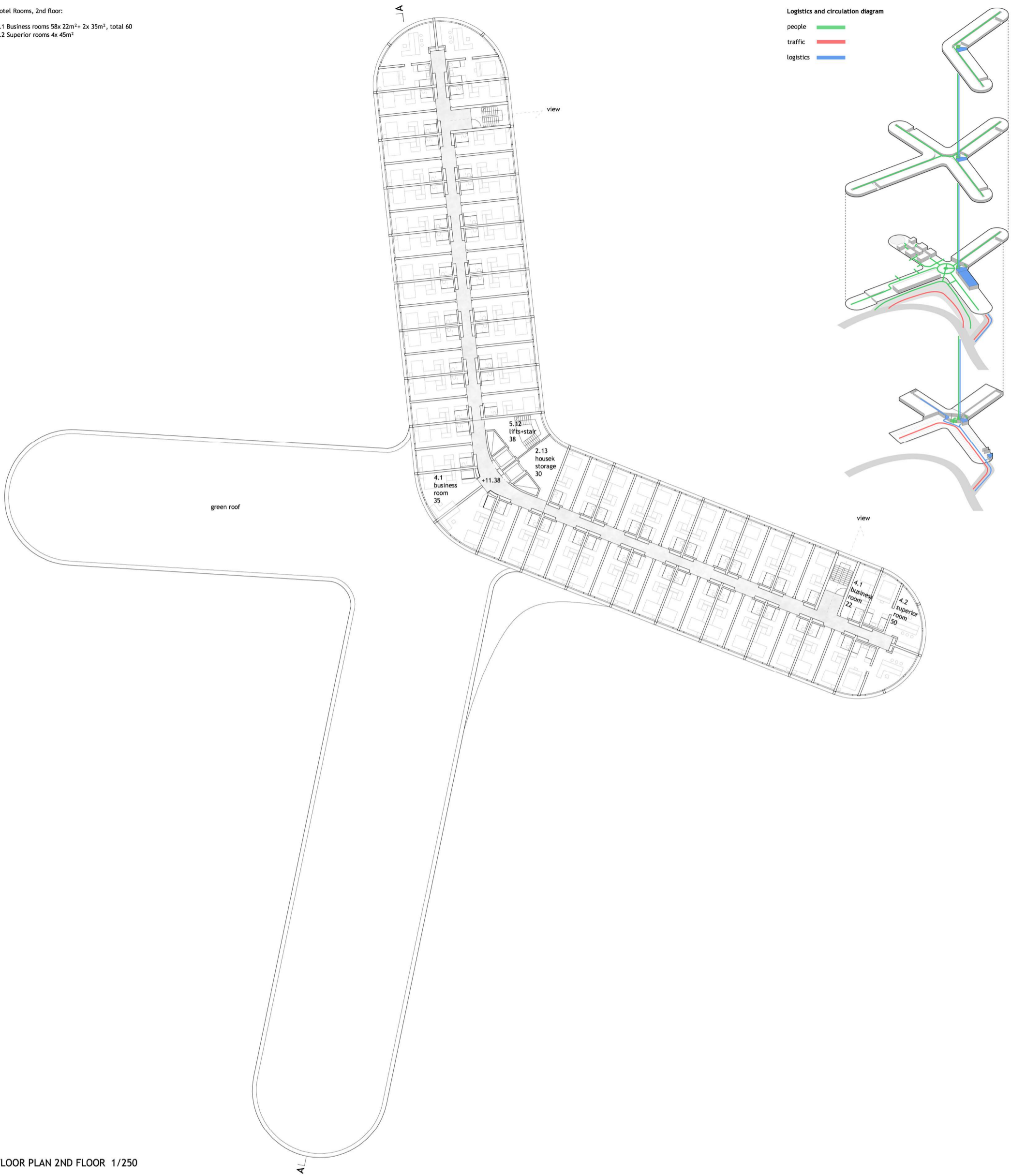


- 1. wood, Accoya with clear varnish
- 2. glass
- 3. metal, painted dark grey
- 4. untreated massive logs
- 5. stone wall

ELEVATION SOUTH-WEST 1/250

Hotel Rooms, 2nd floor:
 4.1 Business rooms 58x 22m²+ 2x 35m², total 60
 4.2 Superior rooms 4x 45m²

Logistics and circulation diagram
 people —
 traffic —
 logistics —



FLOOR PLAN 2ND FLOOR 1/250

1. wood, Accoya with clear varnish
2. glass
3. metal, painted dark grey
4. untreated massive logs
5. stone wall



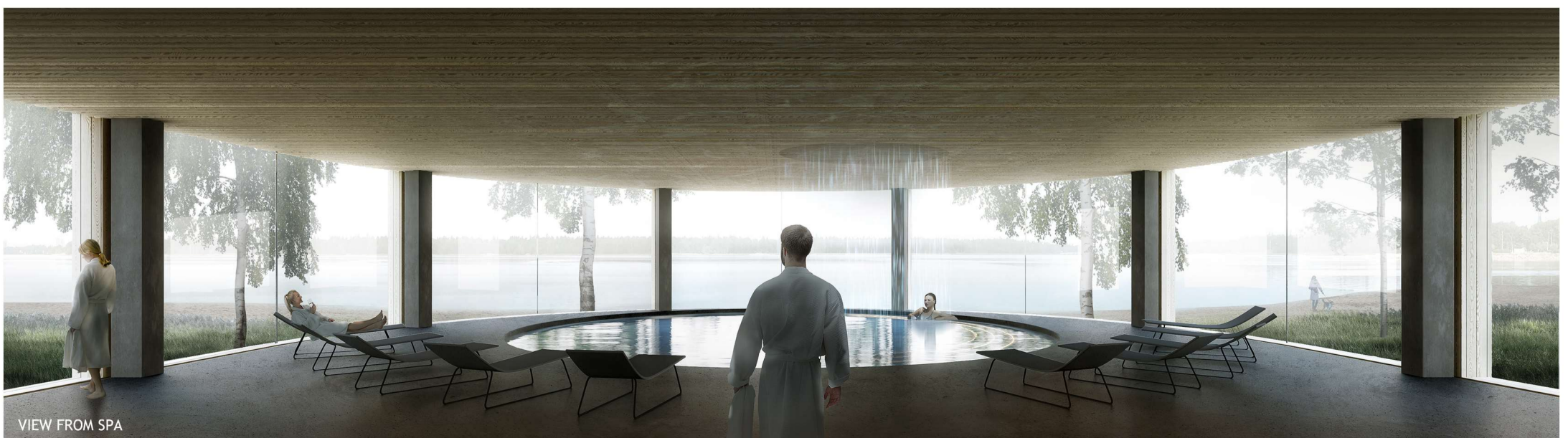
ELEVATION NORTH 1/250



STREET VIEW FROM HIEKKARANNANTIE



VIEW FROM CHECK IN TOWARDS SPA



VIEW FROM SPA

STARFISH

Cityscape

The star like volume of Soulmade local hub is placed freely in the park like setting to complement the nearby existing sports and bathing functions. The building is surrounded by high quality green areas and the coastal pedestrian route runs around the built area uninterrupted. The low mass doesn't block views as there is three level mass only to the North-East. The wings define four courtyards with different character that seamlessly blur to surrounding park. The entrance yard with natural materials and forest like landscape create image of sustainable Soulmade local hub. To the North-East, next to pier with guest harbor and ferry stop, there is an archipelago yard with rocks and vegetation typical for coastal areas like buckthorn and sea hays. To the North-West with calming sea views there is a quiet Meditation Yard with sensory barefoot walking path, herbal garden and flowering fruit trees. The South-Western Spa & Sports yard opens to the sun and is active with several functions like smoke sauna, outdoor bathing and training gear.

The drop off traffic is safe as it doesn't cross pedestrian walkway. Service traffic as well as access to underground parking are discreet as the ramp is cut shorter using the site height differences.

Architectural

The rounded ends soften the long facades and refer to Töölö functionalist architecture heritage. The form becomes more sympathetic and interesting without creating too many exception in the modular hotel floors. The facades are extensively glazed and show the indoor functions to the surroundings. This tells that the local hub is open for everyone and makes the new Töölö living room easy to approach. The horizontality is emphasized by pairing the two adjacent windows together. The alternating rhythm of floors on top of each other gives dynamics for the modular and repetitive structure. The prefabricated façade elements with additional depth shade the interior spaces and protect them from overheating. Accoya planks are given fifty year guarantee and the material doesn't need any maintenance or surface treatment which makes the material also financially sustainable.

Functional

When you enter, you have an interesting view through the building. The central check in space serves also Emma store and Twisted bar so that same staff can serve effectively several functions. In ground floor, there are no hard boundaries between the functions. The space flows freely and the layout is easy to modify for future needs as well. The big open spaces are located at the ends of the wings so that they benefit from the fantastic 180 degree sea views. The northern wing housing modular hotel rooms and needing less floor height is elevated from GF level. This is how the hotel rooms have privacy and in the basement level there is enough room for technical spaces and you get natural light to offices and personnel spaces. The spa is conceived with space in space concept. The closed functions are placed inside varying concrete and wooden boxes that form interesting spaces also between the volumes. You can choose your degree of privacy in the fluid and flowing space.

Materials, atmosphere

The cellar as well as ground floor structures (except Northern wing with hotel rooms) are made of concrete which is safe for underground and wet spaces. Everything else is built with effective and easy to build wooden elements. The genuine materials like concrete and wood are left

exposed without coatings which makes them long-lasting and easy to maintain. The robust surfaces create a calm but relaxed atmosphere encouraging people to interact.

Sustainability

Hard surfaces are avoided in the exterior areas and the building has green roofs. The storm water is infiltrated on own plot. Plenty of bicycle parking spaces encourage to use bike instead of car. The narrow building mass lets natural light in to all spaces without risky roof light structures and enables natural ventilation opening the windows. The ground floor spaces are flexibly enabling future alterations. The depth of façade protects interior spaces from overheating when the sun shines from steep angle in the summer whereas dark concrete floor absorb solar radiation in the winter. Wood that stores carbon in the building is used extensively but only where it is suitable. Wet spaces on ground level are made of concrete that tolerates moisture. The materials are healthy, long lasting and easy to maintain.

Calculations

	BP area k-m2	Gr.fl area brm ²	Gross volume m ³
UG	414	3 605	12 978
GF	4 621	4 633	19 459
1st FL	4 516	4 610	13 277
2nd FL	2 138	2 187	7 676
total	11 689	15 035	53 390
Master plan	12 300		
Ratio of volume to surface		3,55	
Hotel room count:		165 business, 40 Superior	