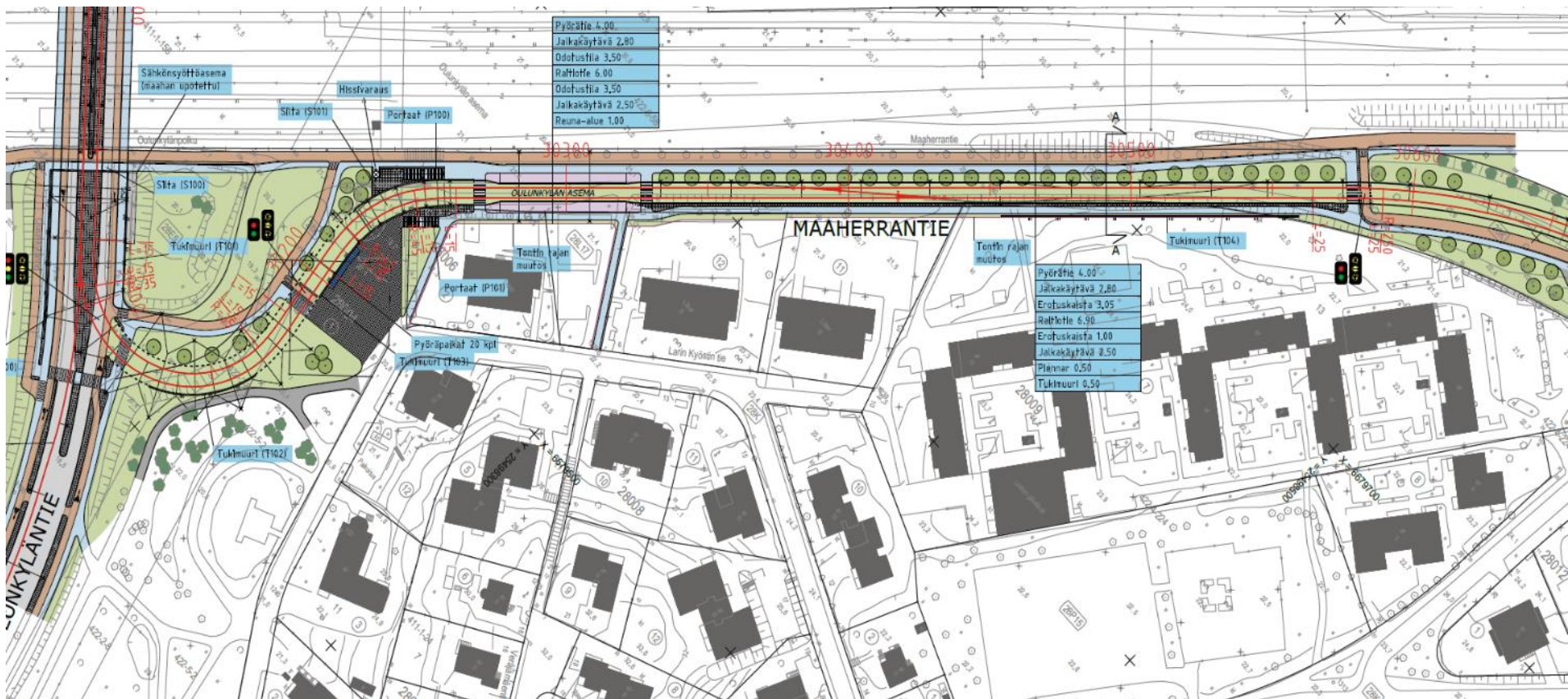




Maaherrantien ympäristö asukastilaisuus 28.4.2016

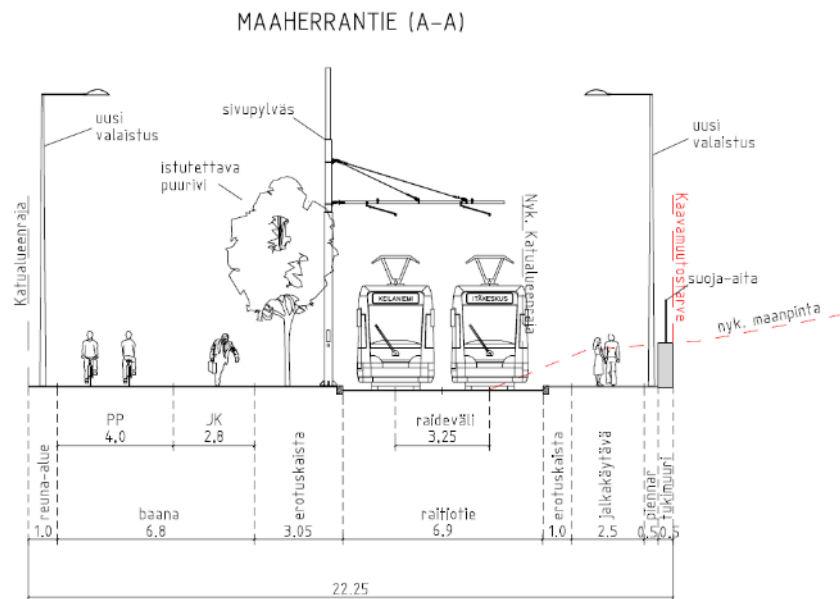


Oulunkylän asema



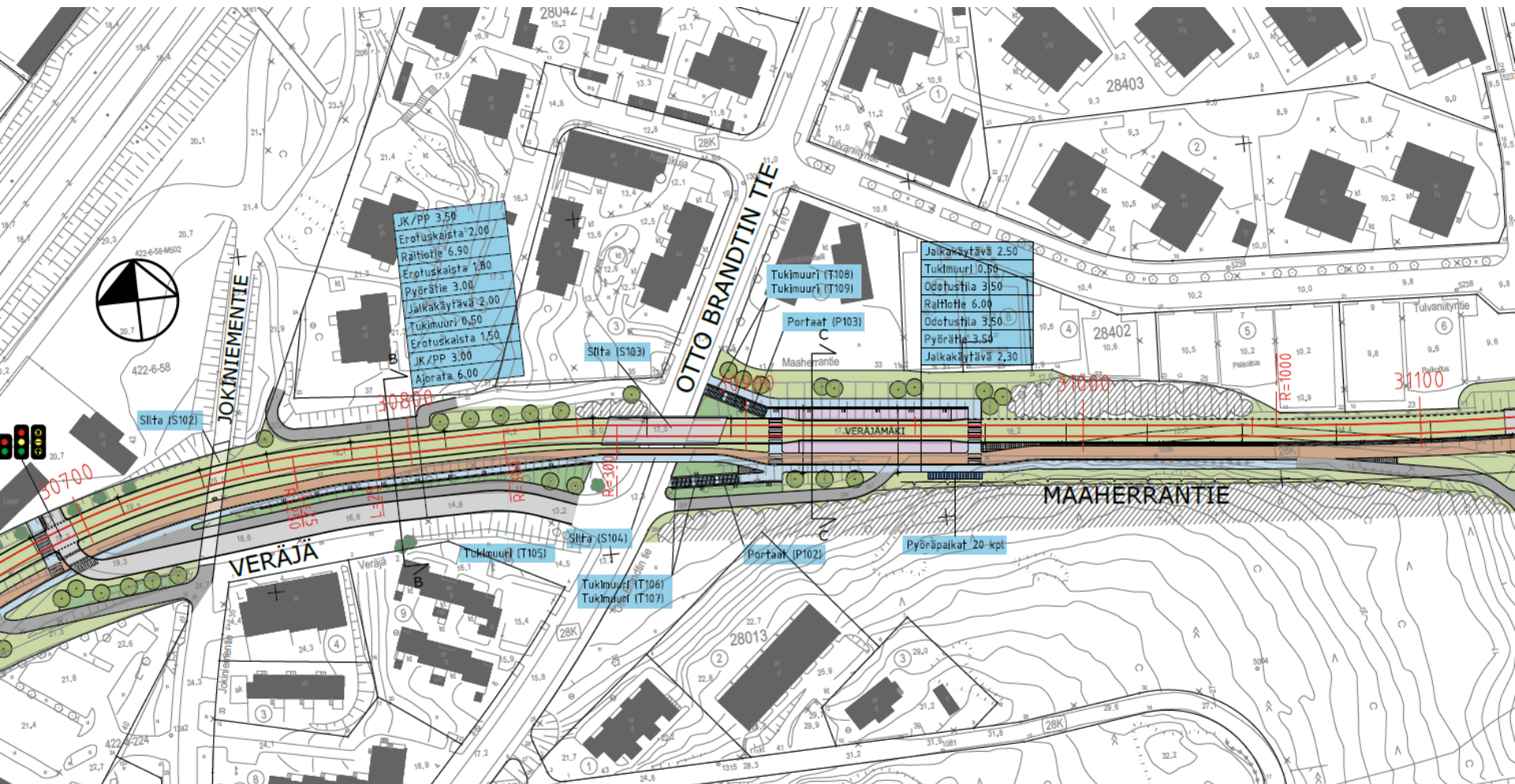


- Turvallisuus
- Tilan puute
- Sujuvuus
- Kunnossapito

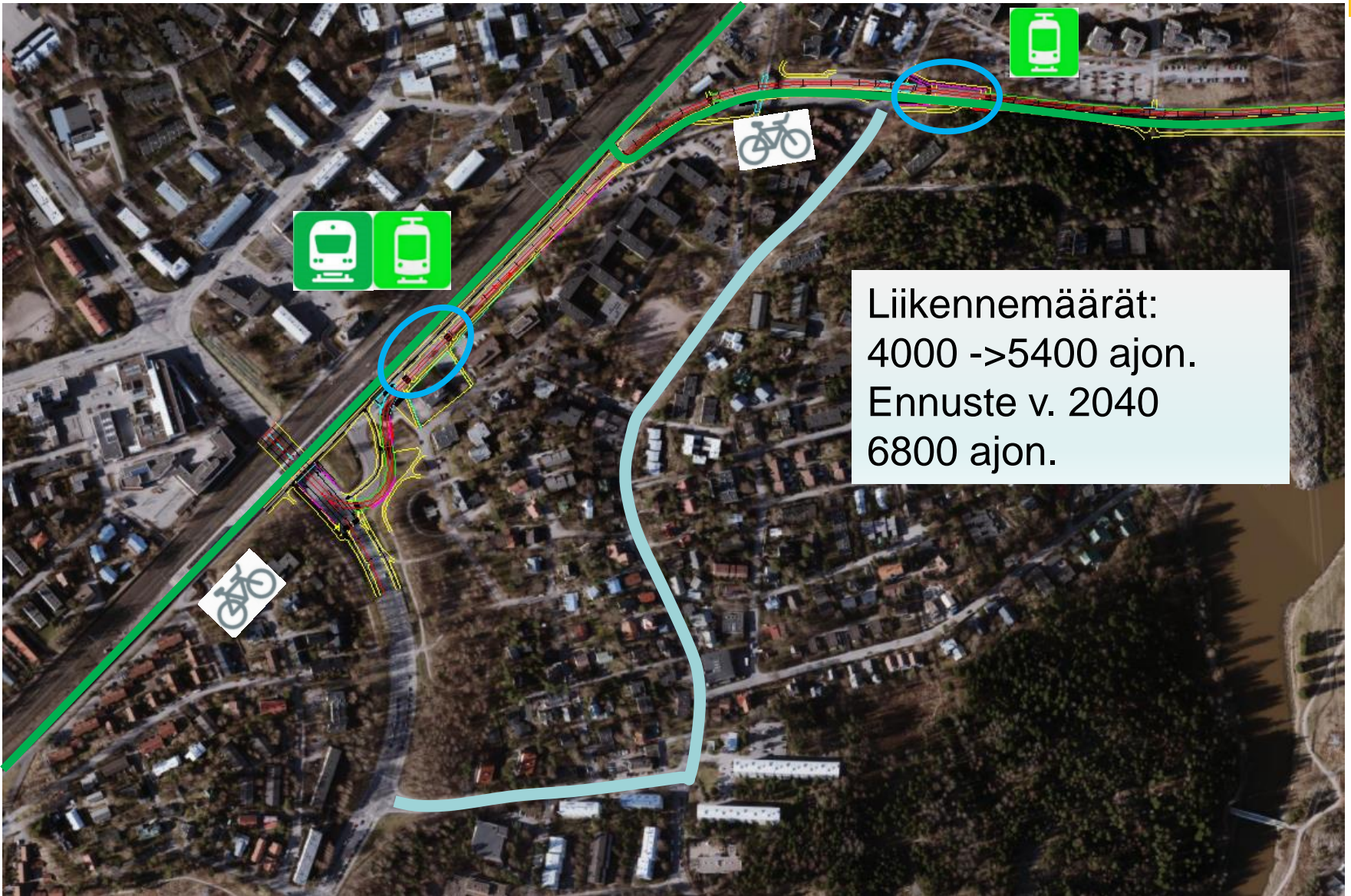




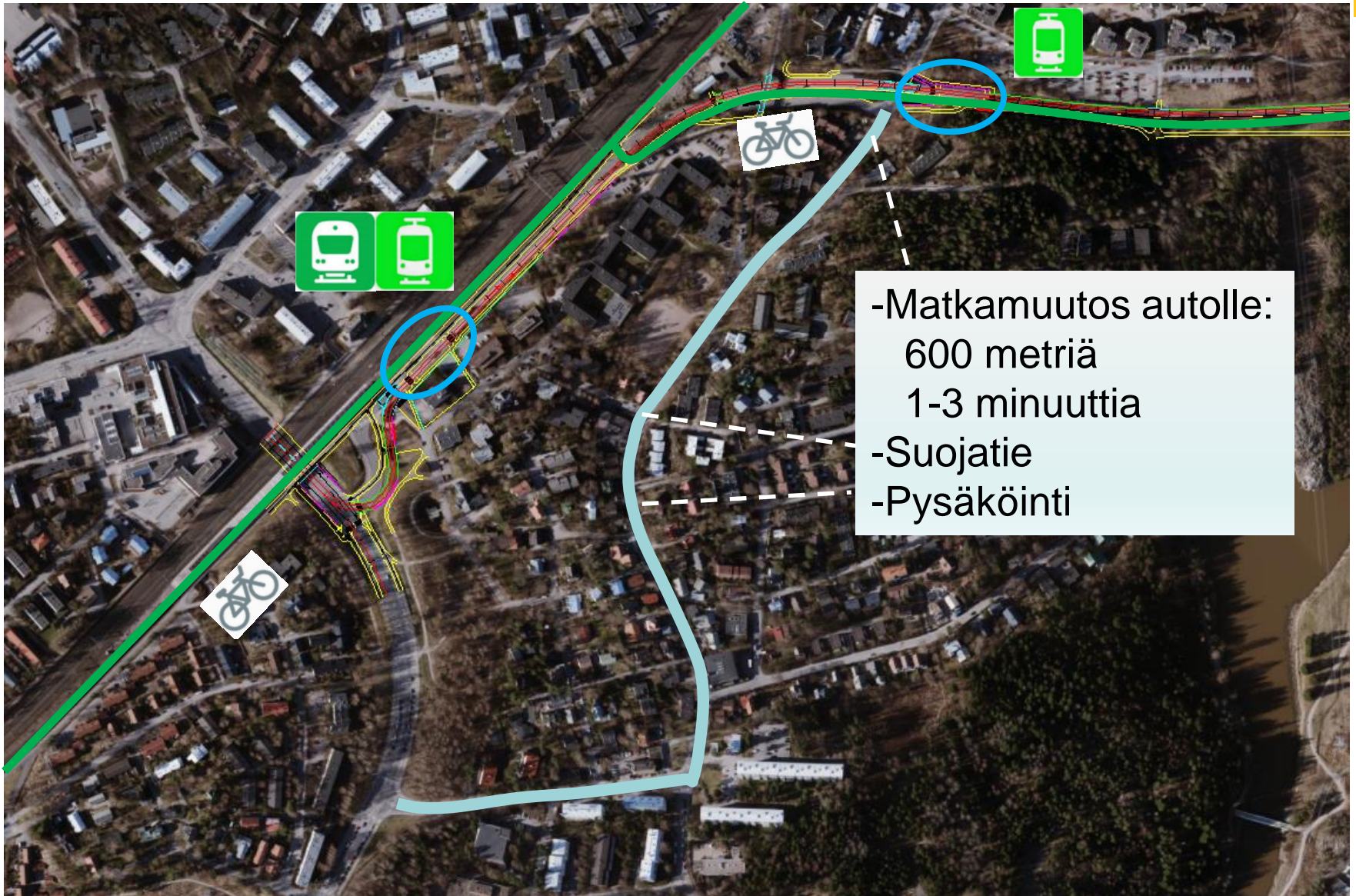
Veräjämäen asema







Liikennemäärät:
4000 ->5400 ajon.
Ennuste v. 2040
6800 ajon.



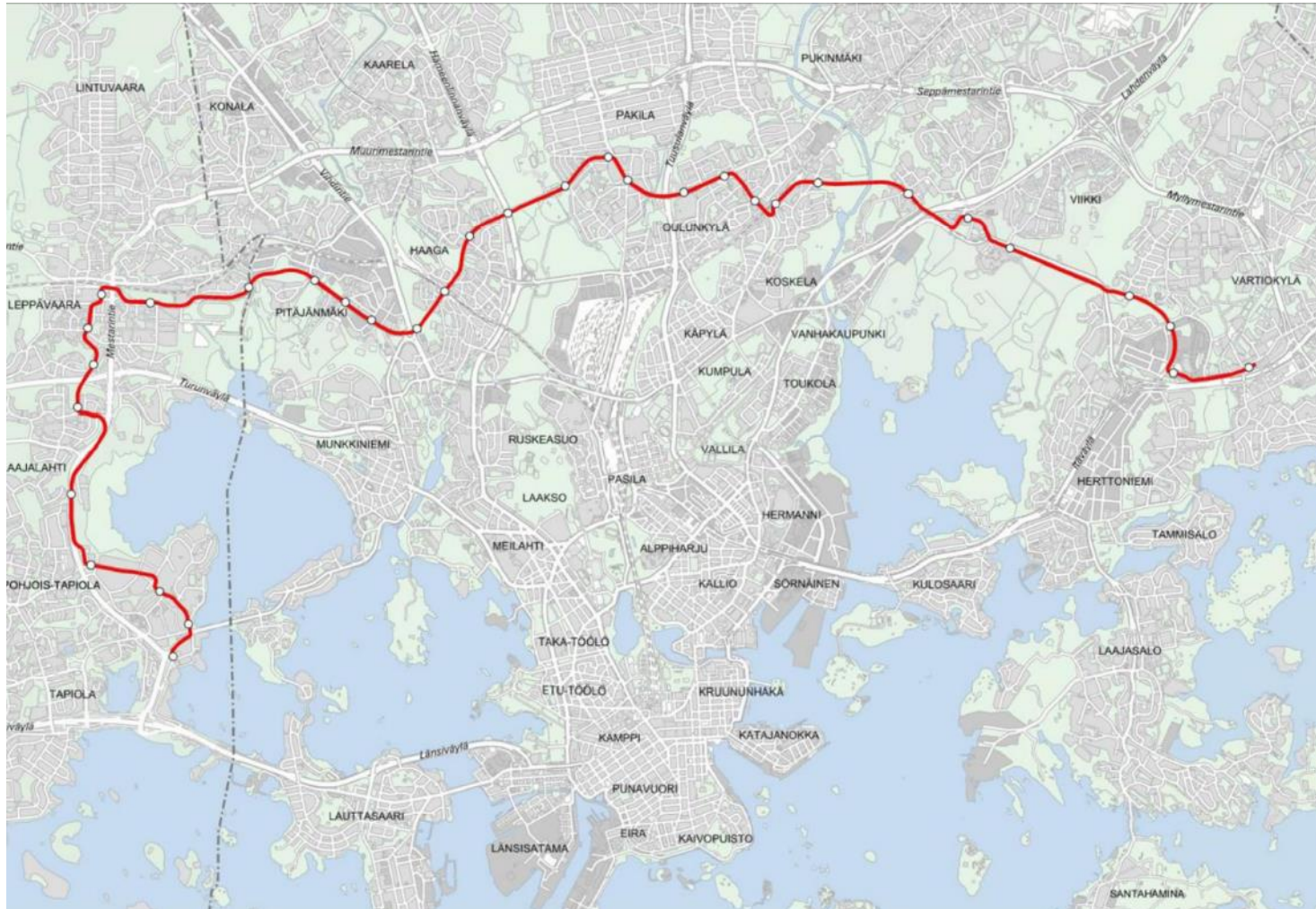


Vastaavia paikallisia
kokoojakuja:
Pohjolankatu 5700
ajon./vrk
Mäkitorpantie 7000
ajon./vrk



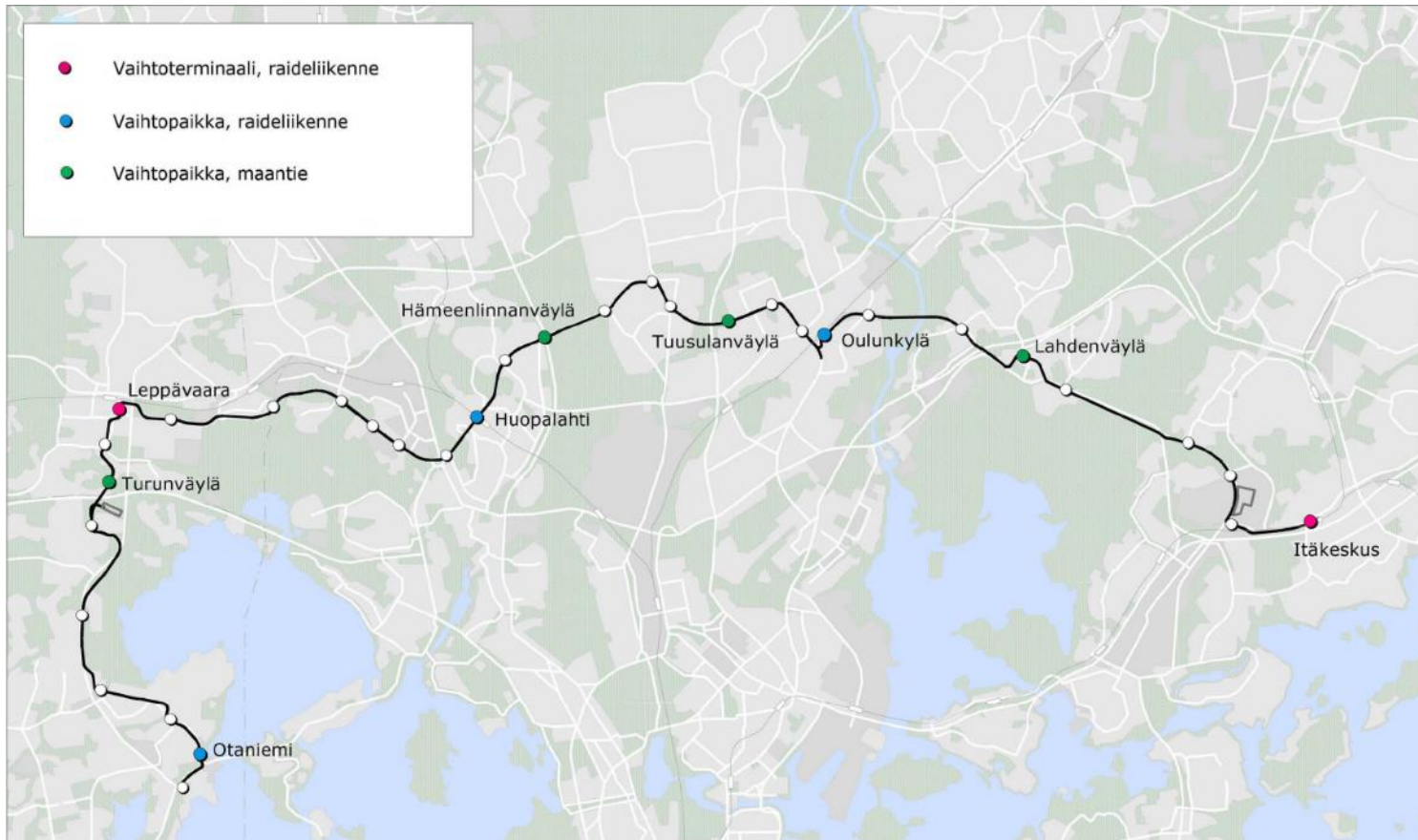


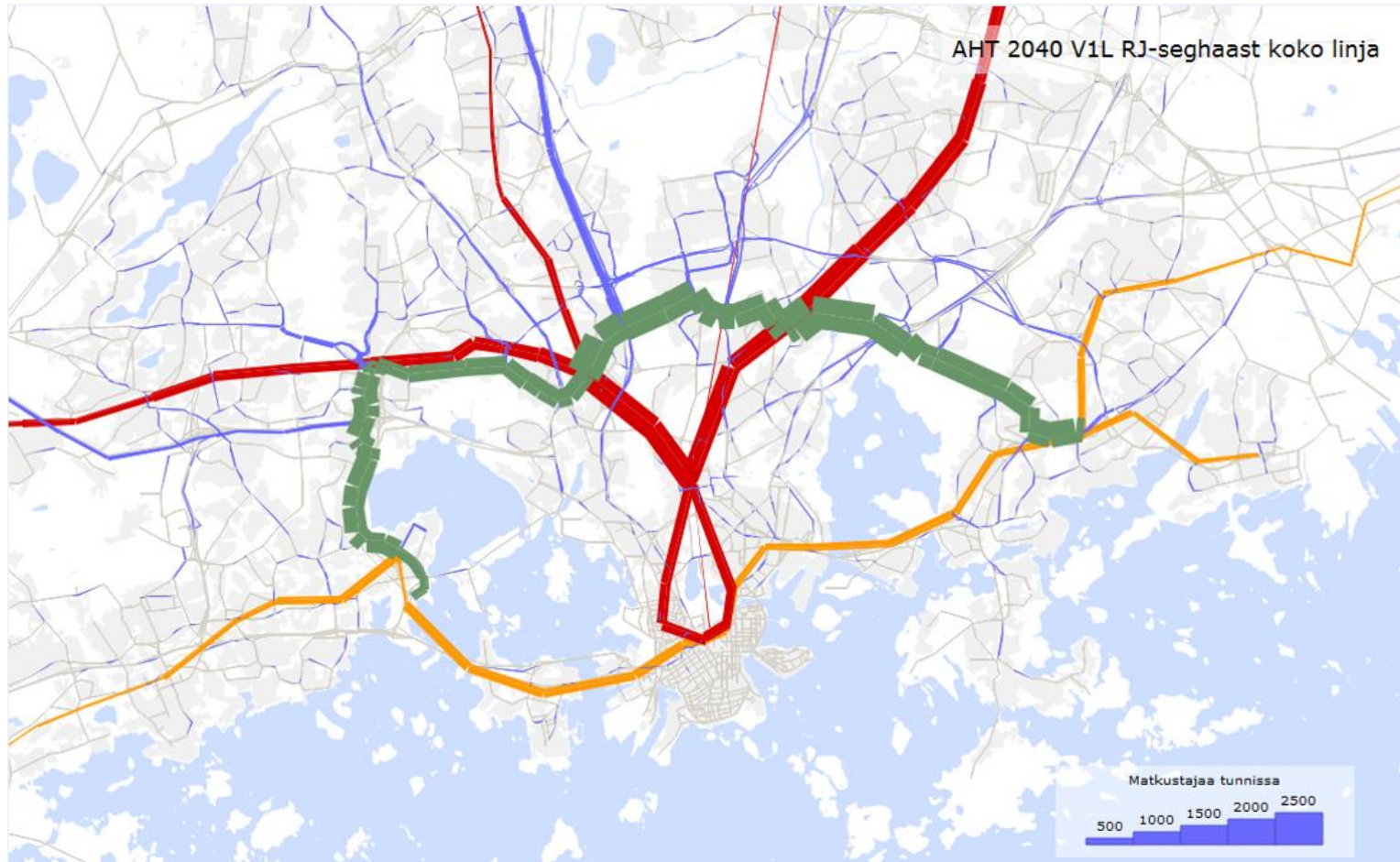
Helsingin kaupunki

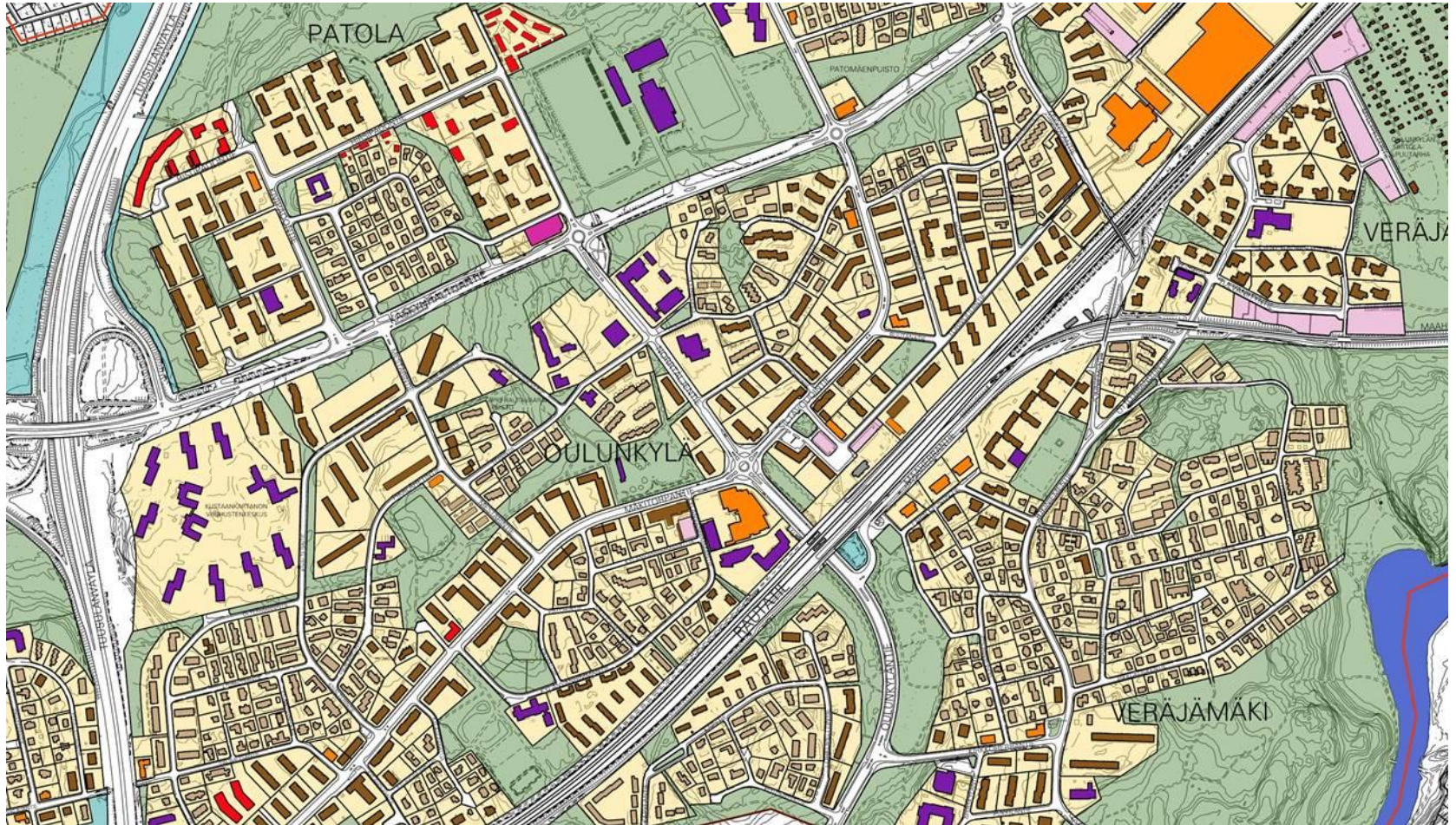




Helsingin kaupunki









Helsingin kaupunki

