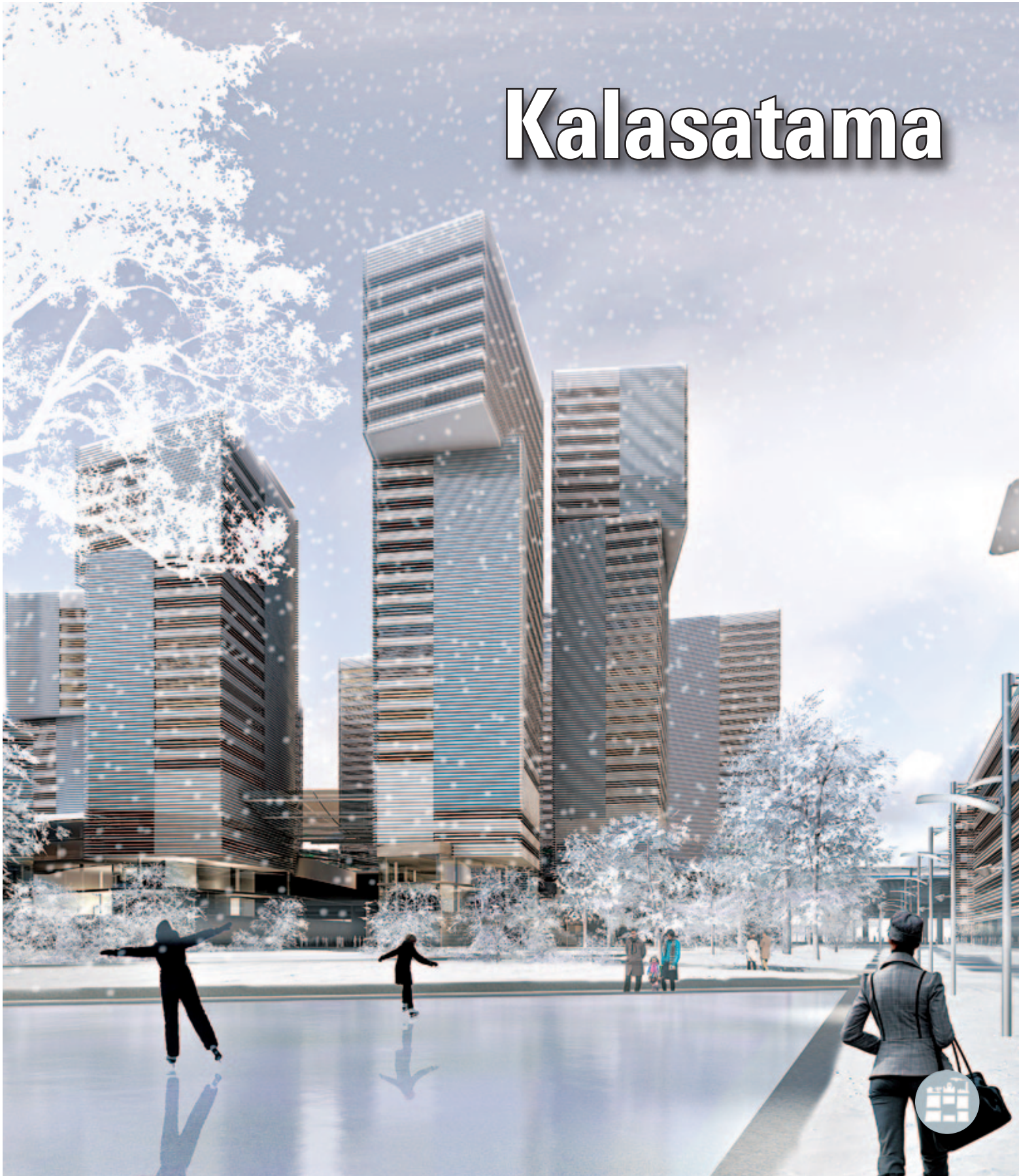


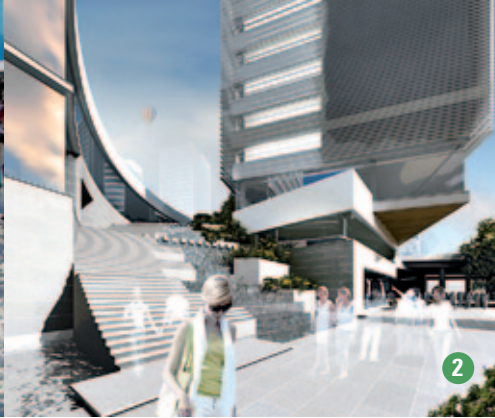


Kalasadatama





1



2



3

Welcome to Kalasatama

Kalasatama will be a tight-knit, urban district. The area is situated in a central location on the eastern shoreline of the central city area. Kalasatama will be connected to the central city area and its shores will be open to the residents of the city.

Construction underway

The initial construction work of Kalasatama began in 2009 and the construction of the first residential building began in spring 2011. Construction will proceed one area at a time and the area that will be completed first is Sörnäistenniemi, located in the south of Kulosaarensilta. The construction work will continue until the 2030s. By then, there will be 18,000 people living and 8,000 people working in Kalasatama.

Maritime atmosphere

The sea by the new district is calm, as it undulates in a sheltered inner bay. As the former harbour district will be open to the city residents, the sea will also be closer to those living near the area. A six kilometre seaside promenade will cover the shorelines, with different looks in different areas. The streets will be drawn up so that there will be views out to the sea. It will be possible to enjoy sea views from the sauna and shared facilities on the upper floors of the residential buildings, too.

Urbanity

Urbanity in Kalasatama refers to tightly knit buildings as well as an abundance of choice, random encounters and living, changing spaces. Strollers and cyclists will be provided with various routes to choose from. Room will be reserved for restaurants and small boutiques in the

basements of the buildings. The largest commercial premises will be located in the centre of Kalasatama. Kalasatama Park and Mustikkamaa will provide a wide range of recreational activities. Kalasatama Park is a new urban city park, whereas Mustikkamaa will offer the chance to enjoy the pine wood surroundings and natural rocky shores.

Versatile living

In addition to traditional multi-storey buildings, there will also be tower blocks, terraced buildings, detached city houses and floating apartments in Kalasatama. Owner-occupied, rental, Hitas (price-controlled) and right-of-occupancy apartments will be located in the same blocks. Building sites have also been reserved for student, senior and special housing. The apartments will vary from small one-room flats to big family apartments. The area's constructors and planners are mainly selected through plot allocation and architectural competitions.

Flexible transport connections

Kalasatama is situated in a transportation intersection and connections to all directions are good. The metro station began its operations in January 2007 and several bus routes via Kalasatama are already in operation. The first trams will begin to operate in the area in the 2020s.

1 Temporary use of Kalasatama

It is possible to move around Kalasatama and follow its development during construction work. There is a marked route in the area, which changes as the construction work progresses. There is also always something happening in Kalasatama. Urban farming has been tested in the area and visitors have enjoyed picnics, played basketball, gone skiing and painted on a graffiti wall. There will be, among other things, a summer café and a temporary park including sun-dials.

2 Kalasatama centre

The centre of Kalasatama will consist of eight tower blocks with between 20 and 33 storeys, located on both sides of the Itäväylä route. A green cover, which will form an integrated courtyard in the middle of the tower blocks, will be planted along Itäväylä and the metro station. There will be apartments for over 2,000 residents, commercial premises, a cinema, a hotel, offices, a transport terminal and a centre for health and social care in the centre.

3 Floating apartments

An area for 41 floating apartments is being planned in the northern part of Verkkosaari. Detached houses of different sizes will be built close to each other around the quays. In future, it will be possible to build more floating apartments in the area as new islets.

4 Isoisänsilta

It is possible to hear the roaring of the lions of Helsinki Zoo in Kalasatama on spring evenings. When the Isoisänsilta bridge between Sörnäistenniemi and Mustikkamaa will be complete, it will be easy to visit the zoo from Kalasatama. Thanks to the bridge, it will also be easy to go for walks and enjoy recreational activities in Mustikkamaa.



5



6





5 Sörnäistenniemi

Around 2,700 apartments will be built in Sörnäistenniemi. In addition to multi-storey buildings, there will be some interconnecting urban detached houses. A block house, where a school and a day-care centre are due to open in autumn 2014, will be built in Sörnäistenniemi.

6 Suvilahti and Tukkutori

Suvilahti has developed into a versatile cultural centre. In the premises of an old gas plant, you can enjoy circus, theatre, exhibitions and musical year round. Besides spiritual nourishment, high quality nourishment for the body will also be available for the residents of Kalasatama. A good food centre will open at Tukkutori, where you will be able to buy fresh ingredients or sit at a table to enjoy some food.

7 Hanasaari

Terraced houses, which have been playfully called saddle or tub houses, are being planned in Hanasaari. Recreational activities for the inhabitants and visitors to the island will be available at the seawater swimming bath, located at the tip of the Hanasaari island, which will be open all year round.

Kalasatama key figures

Land area	177 ha
Floor area	1,350,000 m ²
Shoreline	about 5 km
Residents	18,000
Jobs	8,000
Construction years	2009–2035



City Planning Department
Helsinki Eastern Harbour Project
P.O. Box 2100 (Narinkka 2 A)
FIN-00099 CITY OF HELSINKI

Internet: www.hel.fi/ksv,
www.uuttahelsinki.fi/kalasatama

Images: 1 Pauli Nevalainen, 2 Helin&Co
Arkkitiedit, 3 Ksv, 4 Ins.tsto Pontek
Oy, 5&7Jarmo Roiko-Jokela, 6 Eerikki
Pokela

Front cover: Centre of Kalasatama,
Helin&Co Architects

Back cover: Hanasaari seawater
swimming bath, Masu Planning

Base map: © City Survey Division,
Helsinki 2011

Printed by Edita Prima Oy,
Helsinki, 2011



Contact

Town Planning

Tuomas Hakala, Architect, Project Manager, + 358-9-310-37205

Ulla Kuitunen, Architect, +358-9-310-37443

Salla Hoppu, Architect, +358-9-310-37240

Tuukka Linnas, Architect, +358-9-310-37308

Jouni Heinänen, Landscape Architect, +358-9-310-37257

Hanna Ikonen, Planner, +358-9-310-64796

Raija Juntunen, Planning Assistant, +358-9-310-37241

Katja Raevuori, Planning Assistant, +358-9-310-37210

Transportation and Traffic Planning

Johanna Iivonen, Diploma Engineer, +358-9-310-37137

E-mail: first name.last name@hel.fi